

# LOT 1 (NE1/4 NE1/4) SECTION 1 T26S R21E

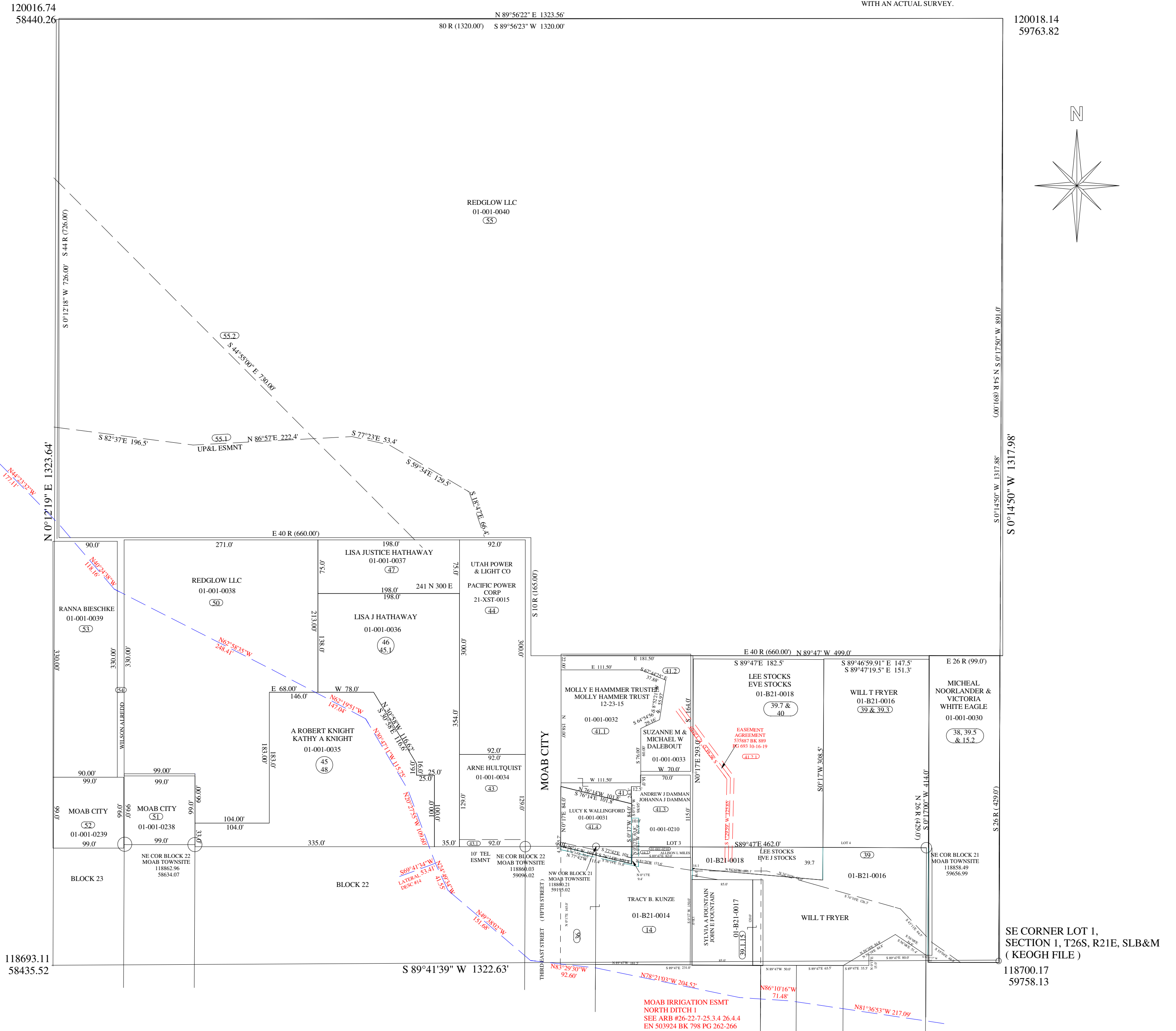
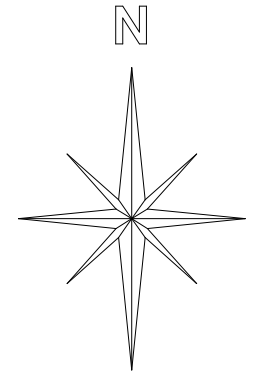
SCALE: 1" = 100'

BK 21 PG 191

THIS PLAT IS MADE SOLELY FOR THE PURPOSES OF ASSISTING IN LOCATING THE LAND, AND THE RECORDER'S OFFICE ASSUMES NO LIABILITY FOR VARIATIONS IF ANY, WITH AN ACTUAL SURVEY.

120016.74  
58440.26

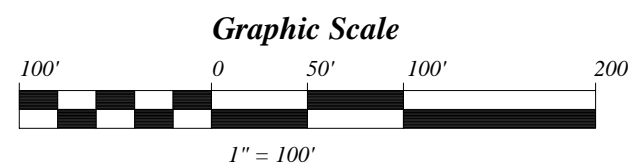
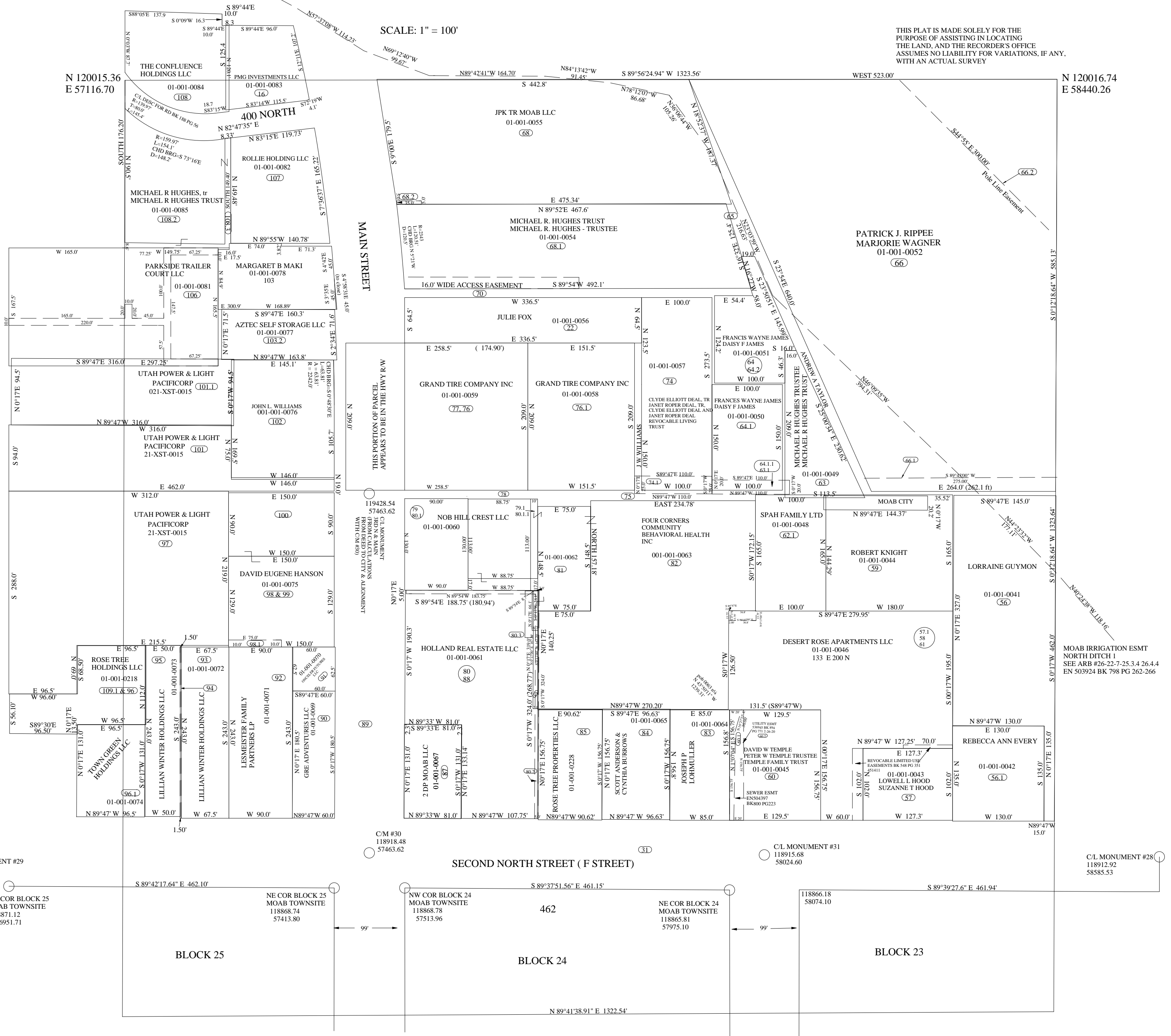
120018.14  
59763.82



# LOT 2 (NW¼ NE¼) SECTION 1 T 26 S R 21 E

SCALE: 1" = 100'

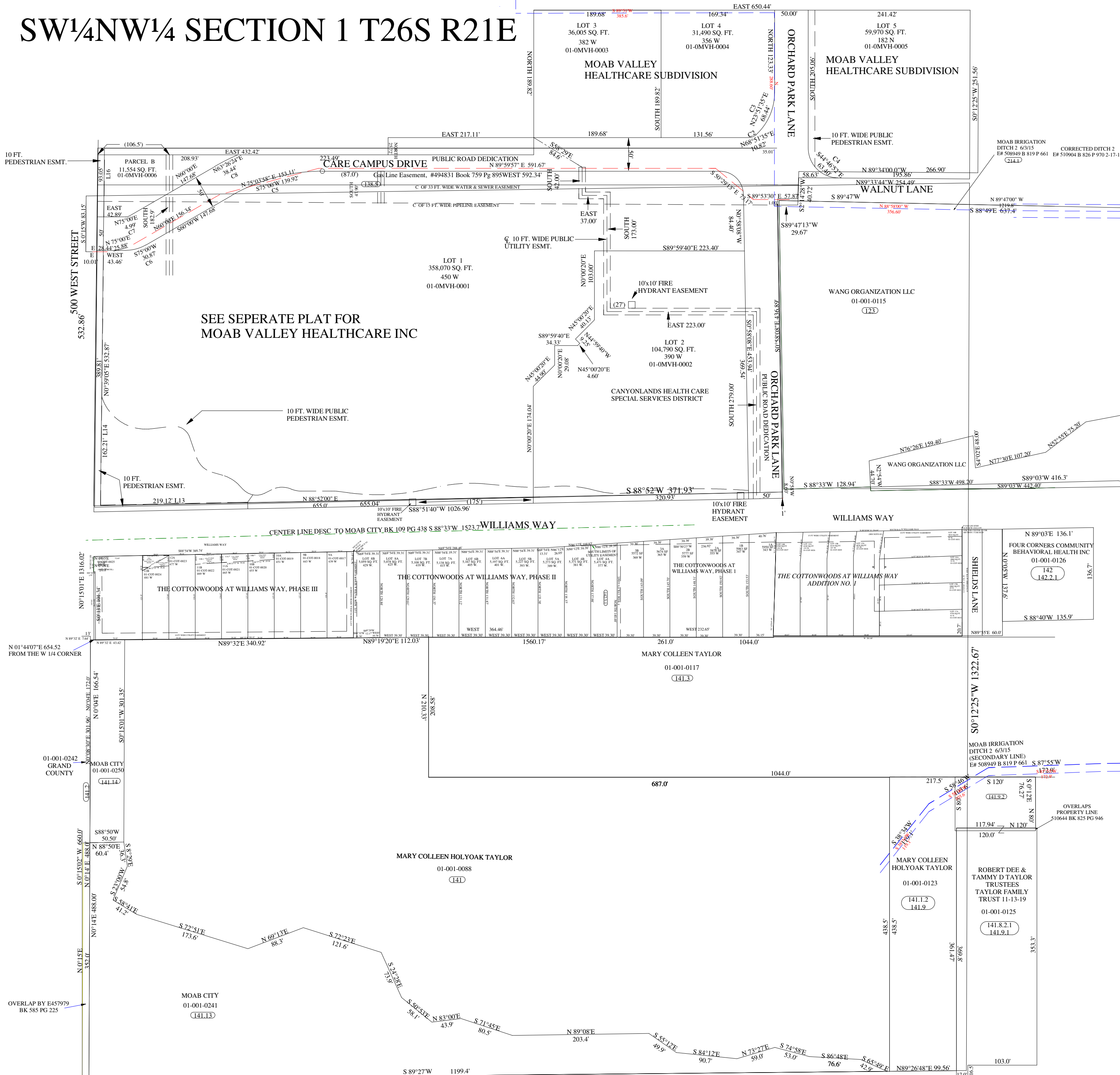
THIS PLAT IS MADE SOLELY FOR THE PURPOSE OF ASSISTING IN LOCATING THE LAND, AND THE RECORDER'S OFFICE ASSUMES NO LIABILITY FOR VARIATIONS, IF ANY, WITH AN ACTUAL SURVEY







# SW<sup>1</sup>/<sub>4</sub>NW<sup>1</sup>/<sub>4</sub> SECTION 1 T26S R21E



SEE SEPERATE PLAT FOR  
MOAB VALLEY HEALTHCARE INC

CENTER LINE DESC TO MOAB CITY BK 109 PG 438 S 88°33'W 1523.7' WILLIAMS WAY

THE COTTONWOODS AT WILLIAMS WAY, PHASE III

THE COTTONWOODS AT WILLIAMS WAY, PHASE II

THE COTTONWOODS AT WILLIAMS WAY ADDITION NO. 1

FOUR CORNERS COMMUNITY  
BEHAVIORAL HEALTH INC  
01-001-0126  
142  
142.2.1

MARY COLLEEN TAYLOR  
01-001-0117  
141.3

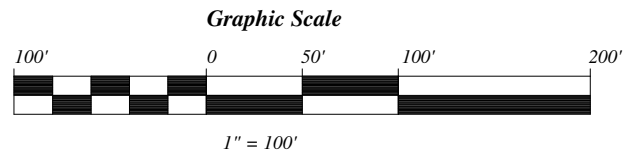
MARY COLLEEN HOLYOAK TAYLOR  
01-001-0088  
141

MARY COLLEEN TAYLOR  
01-001-0123  
141.1.2  
141.9

ROBERT DEE &  
TAMMY D TAYLOR  
TRUSTEES  
TAYLOR FAMILY  
TRUST 11-13-19  
01-001-0125  
141.8.2.1  
141.9.1

MOAB CITY  
01-001-0241  
141.13

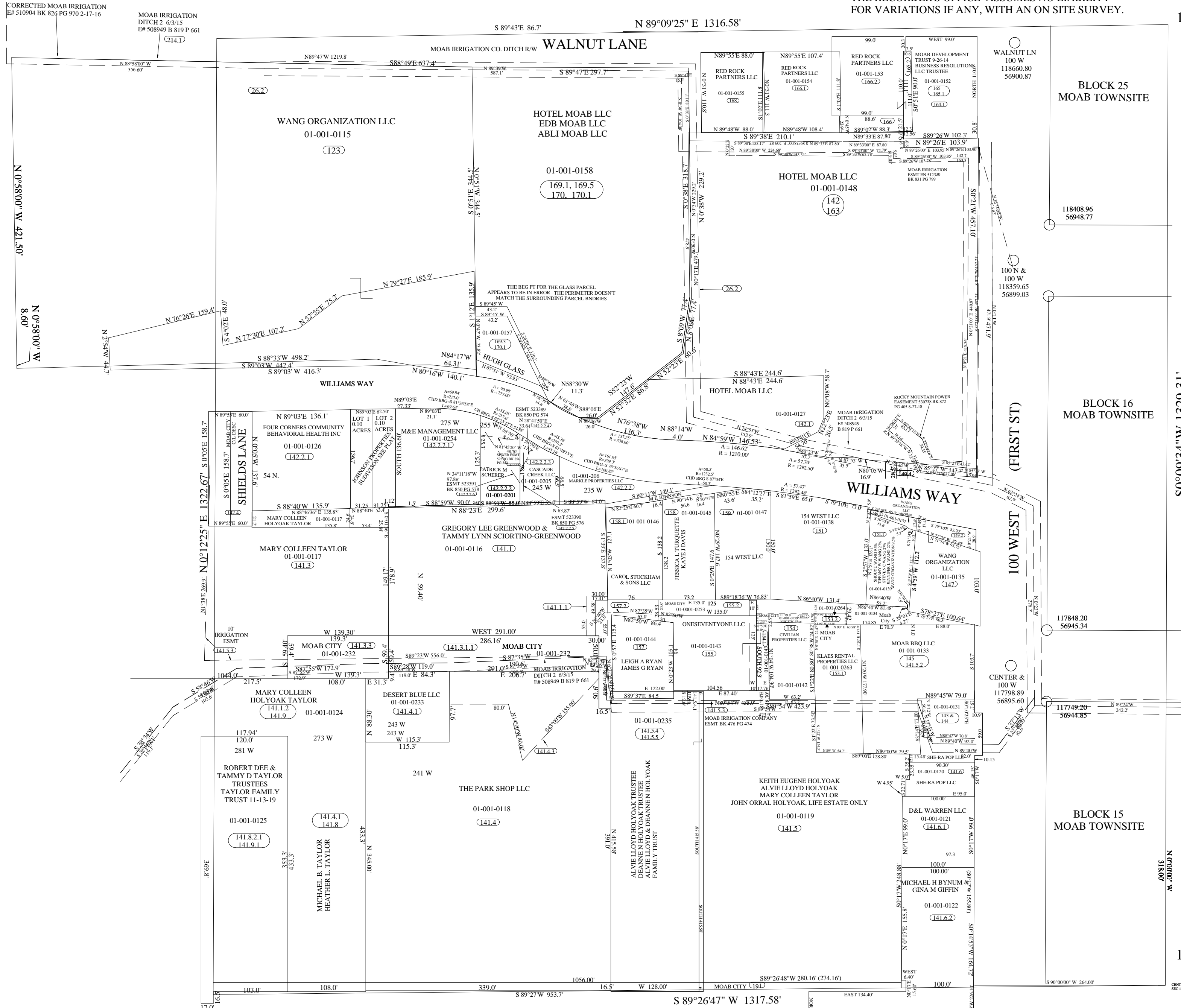
W 1/4 COR SET AT OLD FENCE COR  
117331.30 54474.26  
(WOULD BE N 117333.65 E 54474.25 IF SET AT 38.88 CH  
N FROM SW COR  
IF SET BY PROP DIST N 117389.11 E 54474.51  
SURVEY INFORMATION BY RLJ 11/29/78  
GRAND COUNTY SURVEYER'S OFFICE FILE)



# SE<sup>1</sup>/<sub>4</sub>NW<sup>1</sup>/<sub>4</sub> SECTION 1 T26S R21E SLB&M

THIS PLAT IS DRAWN FROM THE PARCEL DESCRIPTIONS AND IS SOLELY FOR THE PURPOSE OF ASSISTING IN LOCATING THE LAND. THE RECORDER'S OFFICE ASSUMES NO LIABILITY FOR VARIATIONS IF ANY, WITH AN ON SITE SURVEY.

118686.05  
57113.00



118408.96  
56948.77

BLOCK 25  
MOAB TOWNSITE

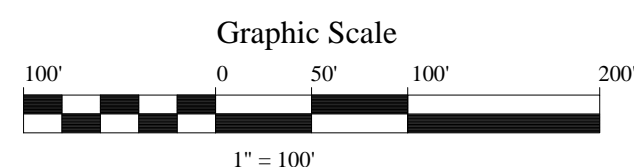
BLOCK 16  
MOAB TOWNSITE

117749.20  
56944.85

BLOCK 15  
MOAB TOWNSITE

117356.75  
57109.30

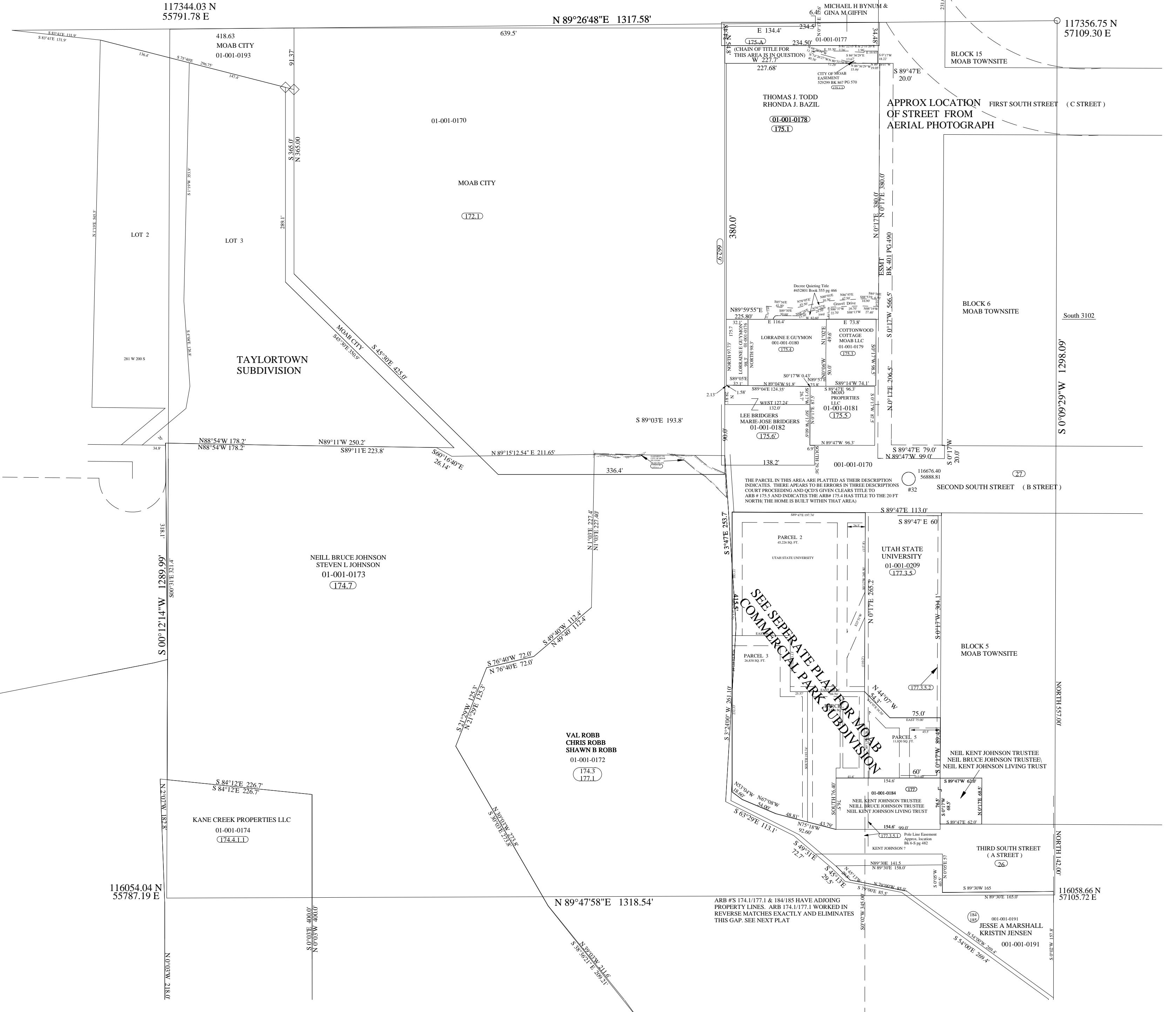
SW COR SE<sup>1</sup>/<sub>4</sub>NW<sup>1/<sub>4</sub>  
VALLEY CONTROL  
117344.02]  
55791.78</sup>



CENTER 14 COR  
SEC 1

# NE<sup>1</sup>/<sub>4</sub>SW<sup>1</sup>/<sub>4</sub> SECTION 1 T26S R21E SLBM

THIS PLAT IS MADE SOLELY FOR THE PURPOSES OF ASSISTING IN LOCATING THE LAND, AND THE RECORDER'S OFFICE ASSUMES NO LIABILITY FOR VARIATIONS IF ANY, WITH AN ACTUAL SURVEY.



ARB #S 174.1/177.1 & 184/185 HAVE ADJOINING PROPERTY LINES. ARB 174.1/177.1 WORKED IN REVERSE MATCHES EXACTLY AND ELIMINATES THIS GAP. SEE NEXT PLAT

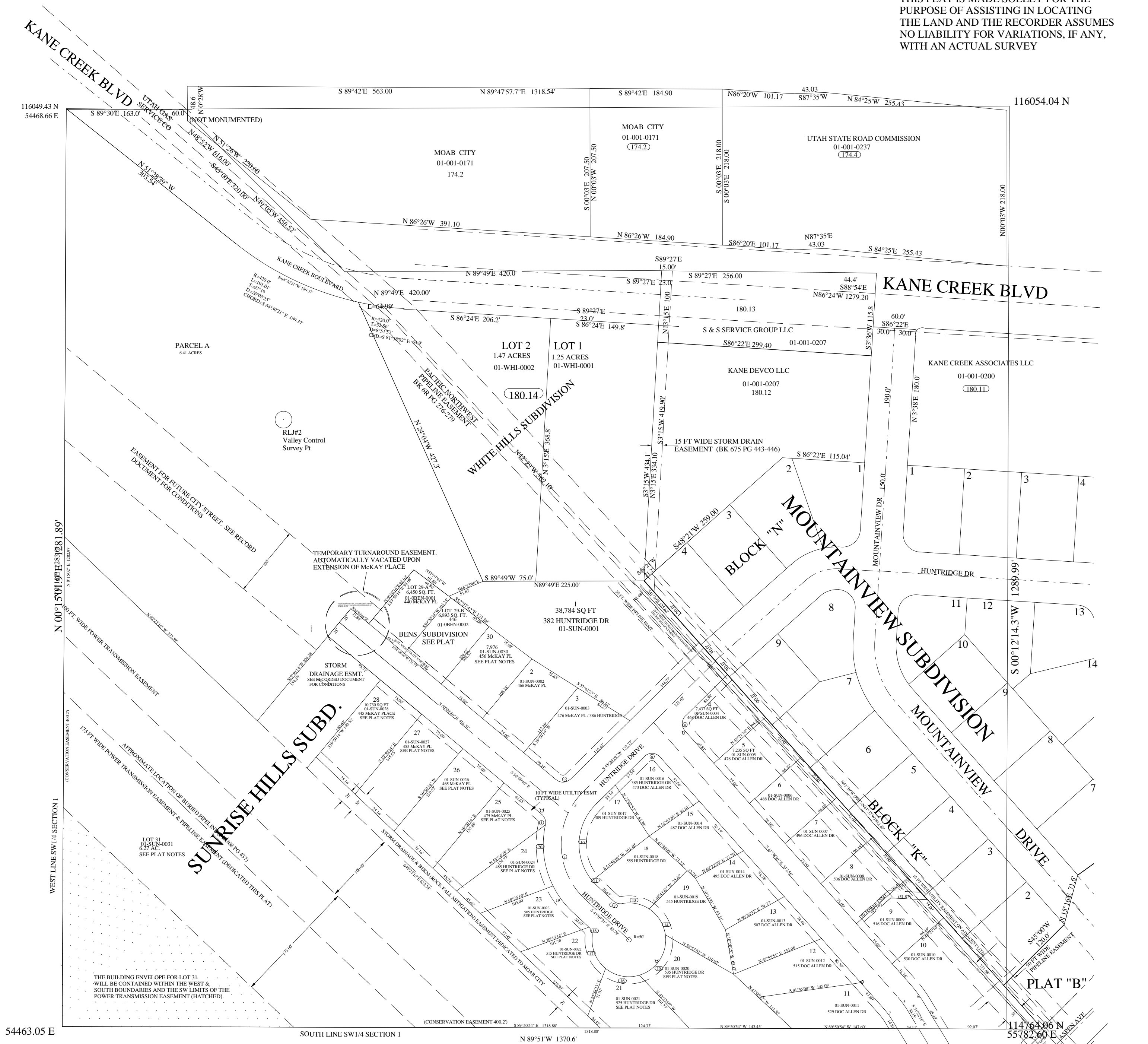
SEE SEPERATE PLAT FOR MOAB COMMERCIAL PARK SUBDIVISION



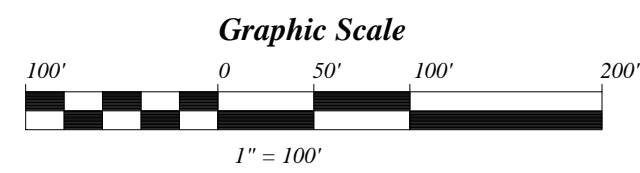


# SW1/4SW1/4 SECTION 1 T26S R21E SLB&M

THIS PLAT IS MADE SOLELY FOR THE PURPOSE OF ASSISTING IN LOCATING THE LAND AND THE RECORDER ASSUMES NO LIABILITY FOR VARIATIONS, IF ANY, WITH AN ACTUAL SURVEY

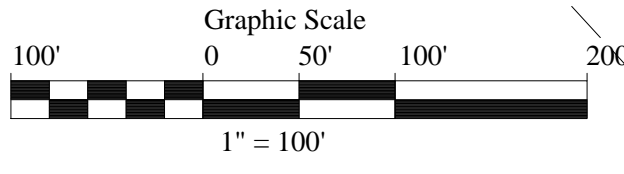
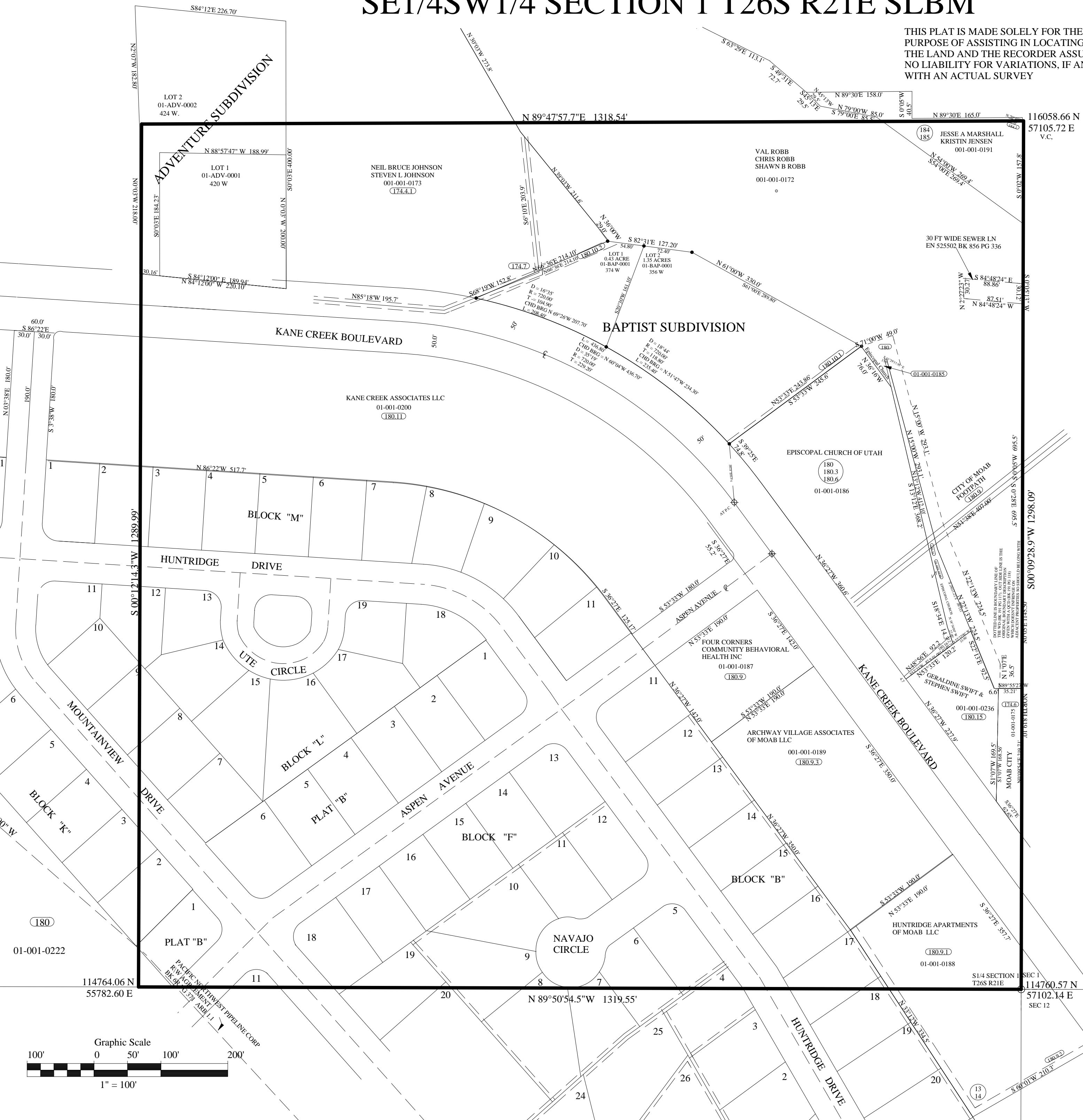


SW CORNER SECTION 1  
T 26 S R 21 E SLB & M



# SE1/4SW1/4 SECTION 1 T26S R21E SLBM

THIS PLAT IS MADE SOLELY FOR THE PURPOSE OF ASSISTING IN LOCATING THE LAND AND THE RECORDER ASSUMES NO LIABILITY FOR VARIATIONS, IF ANY, WITH AN ACTUAL SURVEY



S1/4 SECTION 1 T26S R21E SEC 1  
114760.57 N  
57102.14 E  
SEC 12

(180)  
01-001-0222

114764.06 N  
55782.60 E

N 89°50'54.5"W 1319.55'

116058.66 N  
57105.72 E  
V.C.

# SW1/4SE1/4 SECTION 1 T26S R21E

THIS PLAT IS MADE SOLELY FOR THE PURPOSES OF ASSISTING IN LOCATING THE LAND, AND THE RECORDER'S OFFICE ASSUMES NO LIABILITY FOR VARIATIONS IF ANY, WITH AN ACTUAL SURVEY.

