

NE 1/4 SECTION 6 T26S R22E SLBM

SCALE: 1" = 100'

THIS PLAT IS DRAWN FROM THE PARCEL DESCRIPTIONS AND IS SOLELY FOR THE PURPOSE OF ASSISTING IN LOCATING THE LAND. THE RECORDER'S OFFICE ASSUMES NO LIABILITY FOR VARIATIONS IF ANY, WITH AN ON SITE SURVEY.

MOAB CITY LIMITS

N = 120012.97
E = 62376.95

S 89°53'21"E 1337.42'

N = 120010.39
E = 63714.36

S 89°53'21"E 1337.42'

N = 120007.80
E = 65051.78

LOT 2

UTAH STATE

LB MOAB LAND LLC
01-006-0090

LOT 1

UTAH STATE
LB MOAB LAND LLC
01-006-0090

S 00°14'01"W 1317.28'

S 00°17'41"W 1316.96'

S 0°21'22"W 1316.64'

N = 118695.70
E = 62371.57

S 89°54'12"E 1336.02'

N = 118693.44
E = 63707.59

S 89°54'12"E 1336.02'

N = 118691.19
E = 65043.60

12

9

UTAH STATE
BK 126 PG 246-247

01-006-0091

UTAH STATE
BK 126 PG 246-247

01-006-0091

S 0°14'01"W 1317.28'

N 0°14'01"E 658.64'

N 0°29' E 657.29'

S 89°54'37" E 667.65'

S 89°58'50" W 332.91'

S 89°58'50" W 330.07'

PANORAMA HOLDINGS LLC
02-006-0053

(12.1)

(12.2)

PANORAMA HOLDINGS LLC
02-006-0016

N 26°18'36" W 733.49'

N 0°25'58" E 657.55'

N 0°15'51" E 658.56'

CITY ANNEXATION EN 490727 BK 744 PG 424

9.1

03-006-0149
UTAH STATE

S 0°21'22"W 1316.64'

N = 117378.43
E = 62366.20

S 89°59'48" E 663.58'

S 89°55'02"E 1334.61'

S 89°59'48" E 663.58'
PANORAMA HOLDINGS LLC
02-006-0053

(3.3)

N 89°59'48" W 363.10'

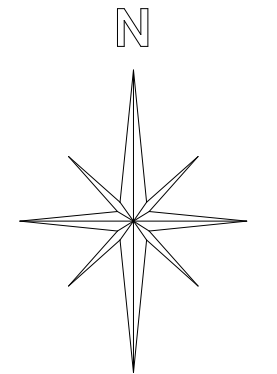
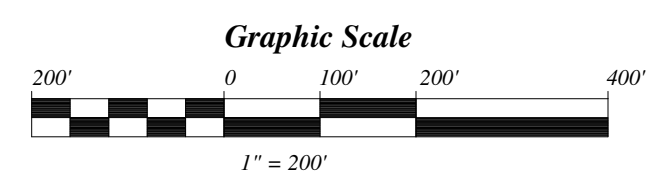
N 26°18'24" W 200.30'

N 54°05'53" W 257.75'

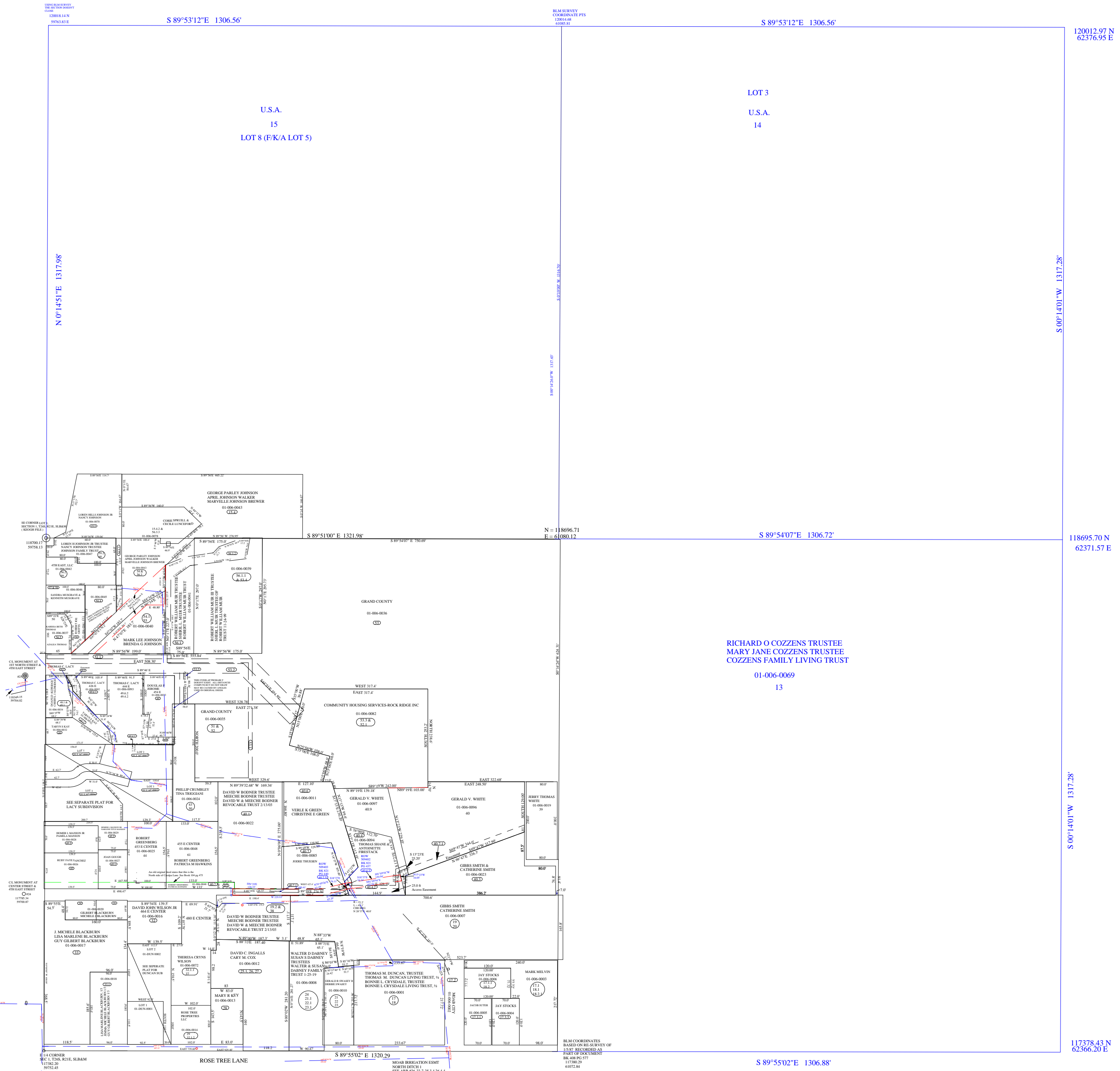
S 0°30'19" W 330.73'

N = 117374.57
E = 65035.42

THE COORDINATE BREAK-OUT FOR THIS AREA IS FROM AN AUTOMATIC PROGRAM BASED ON PERIMETER VALLEY CONTROL COORDINATE PTS AND MAY NOT BE THE SAME AS ACTUAL SURVEY OR GIS PTS.



NW1/4 SECTION 6 T26S R22E SLBM



LOT 8 (NW1/4NW1/4) SECTION 6 T26S R22E

(FORMERLY LOT 4) GRAND COUNTY UTAH

SCALE: 1" = 100'

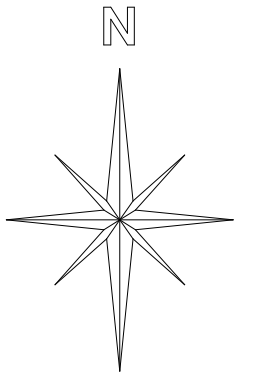
THIS PLAT IS MADE SOLELY FOR THE PURPOSES OF ASSISTING IN LOCATING THE LAND, AND THE RECORDER'S OFFICE ASSUMES NO LIABILITY FOR VARIATIONS IF ANY, WITH AN ACTUAL SURVEY.

USING BLM SURVEY
THE SECTION DOESN'T
CLOSE

120018.14 N
59763.83 E

S89°51'E 1321.98' S 89°53'11.9"E 1306.56'

120015.56 N
61070.39 E
BLM SURVEY
COORDINATE PTS
120014.68
61085.81



UNITED STATES OF AMERICA
(BLM)

(N0°08'38.61"E 1318.60' TO CLOSE)
N 00°14'50.5"E 1317.98'
N0°09'E 1318.02'

S0°19'W 1316.70'

MICHEAL NOORLANDER
VICKI S NOORLANDER

VALLEY CONTROL
SEC BREAK-DOWN
118700.17 N
59758.14 E

118699.53
59760.51
BLM SURVEY
COORDINATES
11/16/84

LOREN H JOHNSON JR TRUSTEE
NANCY JOHNSON TRUSTEE
JOHNSON FAMILY TRUST
(THIS STRIP DEEDED BY
SPEC WD EN 499935 BK 780 PG 332 INTO TRUST BUT
STILL TAXED WITH LARGER PART 01-006-0070)

GEORGE PARLEY JOHNSON
APRIL JOHNSON WALKER
MARVELLE JOHNSON BREWER
01-006-0043

S89°56'E 135.00'
GEORGE PARLEY JOHNSON
TAMALA KAY JOHNSON
01-006-0089

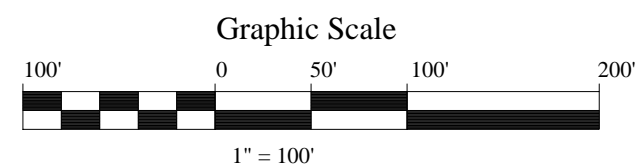
LOREN HILLS JOHNSON JR
NANCY K JOHNSON
01-006-0070

CORIE SPRULL &
CECILE LUNCEFORD
01-006-0078

1/16TH BREAK-DOWN
USING VALLEY CONTROL

BLM SURVEY
118698.00
61078.53

118697.93 N
61064.86 E

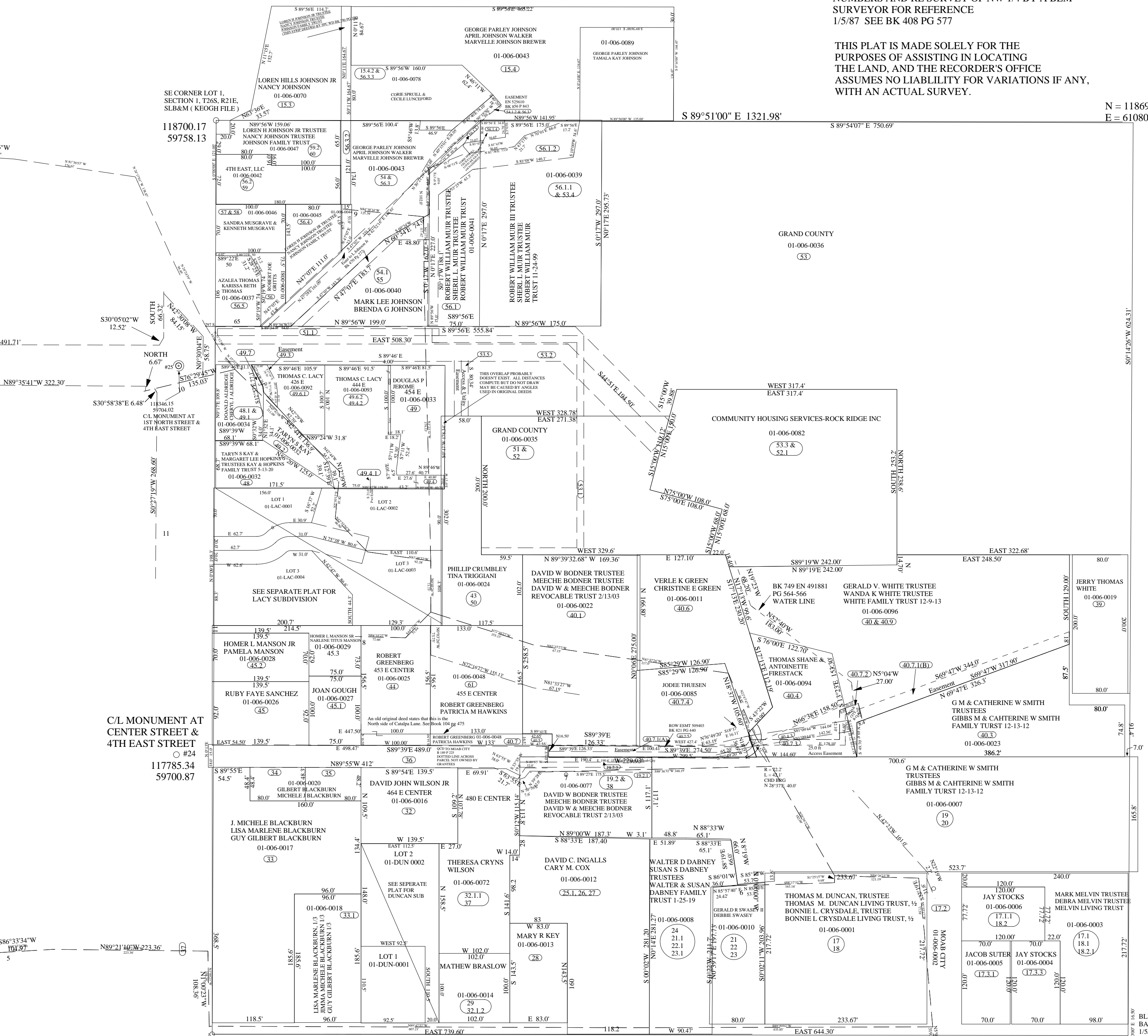


SW1/4NW1/4 (LOT 5), SECTION 6, T26S, R22E, SLB&M

CORNERS SET USING VALLEY CONTROL COORDINATE NUMBERS AND RE SURVEY OF NW 1/4 BY A BLM SURVEYOR FOR REFERENCE 1/5/87 SEE BK 408 PG 577

THIS PLAT IS MADE SOLELY FOR THE PURPOSES OF ASSISTING IN LOCATING THE LAND, AND THE RECORDER'S OFFICE ASSUMES NO LIABILITY FOR VARIATIONS IF ANY, WITH AN ACTUAL SURVEY.

N = 118696.71
E = 61080.12



SE CORNER LOT 1, SECTION 1, T26S, R21E, SLB&M (KEOGH FILE)
118700.17
59758.13

S 89°51'00" E 1321.98'

S 89°54'07" E 750.69'

S30°05'02" W 12.52'
S30°58'38" E 6.48'

C/L MONUMENT AT 1ST NORTH STREET & 4TH EAST STREET
#25
118346.15
59704.02

11

C/L MONUMENT AT CENTER STREET & 4TH EAST STREET
#24
117785.34
59700.87

E 1/4 CORNER
SEC 1, T26S, R21E, SLB&M
117382.20
59752.45

ROSE TREE LANE

S 89°55'02" E 1320.29'

MOAB IRRIGATION ESMT
NORTH DITCH 1
SEE ARB #26-22-7-25.3.4 26.4.4
EN 503924 BK 798 PG 262-266

BLM COORDINATES
BASED ON RE-SURVEY OF
1/5/87 RECORDED AS
PART OF DOCUMENT
BK 408 PG 577
117380.29
61072.84

NE1/4SW1/4 SECTION 6 T26S R22E

GRAND COUNTY

SCALE: 1" = 100"

THIS PLAT IS MADE SOLELY FOR THE PURPOSES OF ASSISTING IN LOCATING THE LAND, AND THE RECORDER'S OFFICE ASSUMES NO LIABILITY FOR VARIATIONS IF ANY, WITH AN ACTUAL SURVEY.

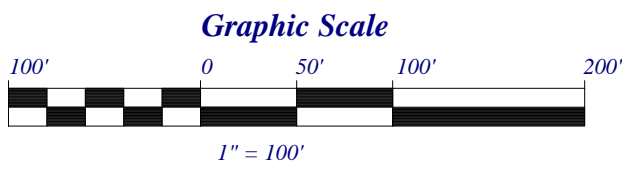
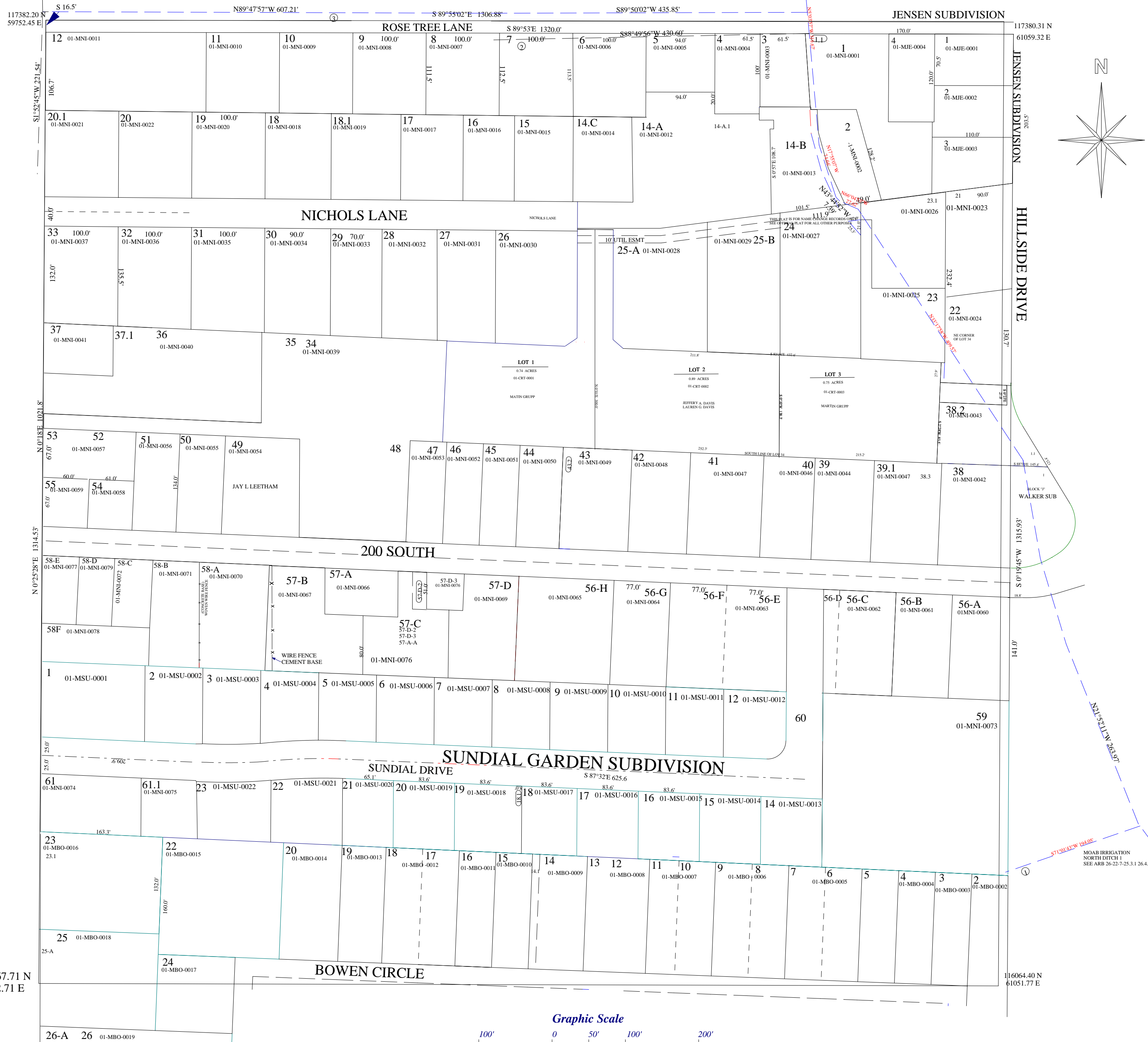


NW1/4SW1/4 (LOT 6) SECTION 6 T26S R22E SLB&M

GRAND COUNTY

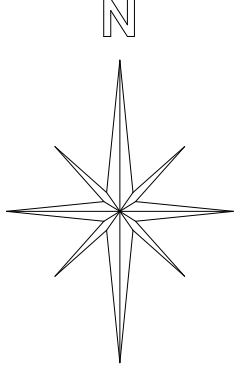
SCALE: 1" = 100'

THIS PLAT IS MADE SOLELY FOR THE PURPOSES OF ASSISTING IN LOCATING THE LAND. THIS ENTIRE PLAT HAS BEEN SUBDIVIDED. SEE SUBDIVISION PLATS FOR ALL OTHER INFORMATION



116067.71 N
59742.71 E

116064.40 N
61051.77 E



MOAB IRRIGATION
NORTH DITCH 1
SEE ARB 26-22-7-25.3.1 26.4.1

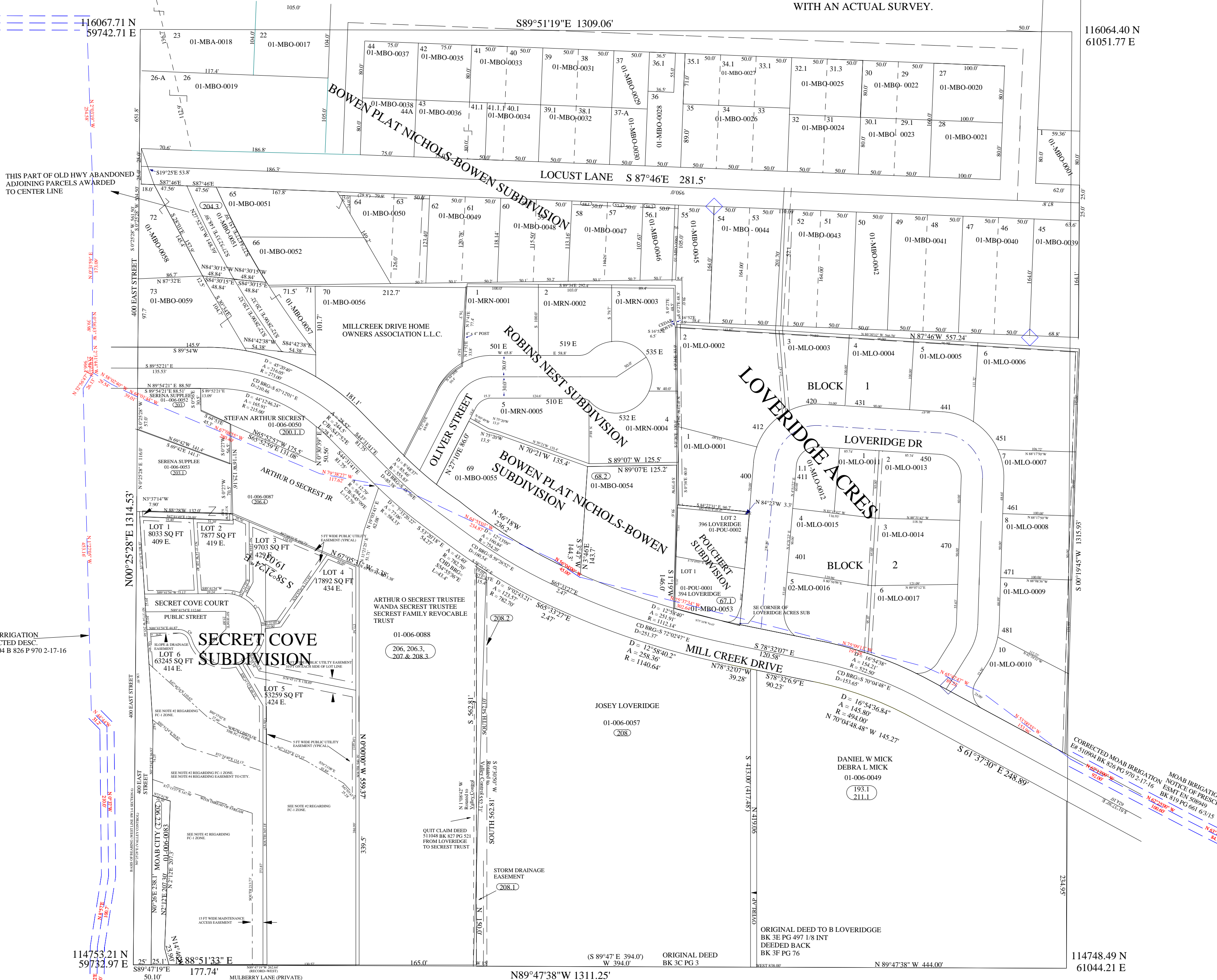
SW1/4SW1/4 (LOT 7) SECTION 6 T26S R22E

SCALE: 1" = 100'

THIS PLAT IS MADE SOLELY FOR THE PURPOSES OF ASSISTING IN LOCATING THE LAND, AND THE RECORDER'S OFFICE ASSUMES NO LIABILITY FOR VARIATIONS IF ANY, WITH AN ACTUAL SURVEY.

BK 22
PG 215

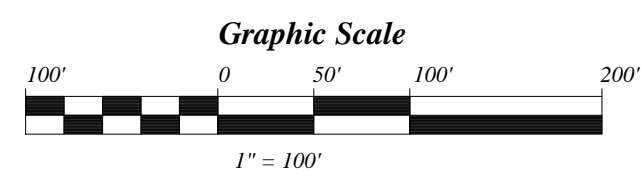
116064.40 N
61051.77 E



THIS PART OF OLD HWY ABANDONED ADJOINING PARCELS AWARDED TO CENTER LINE

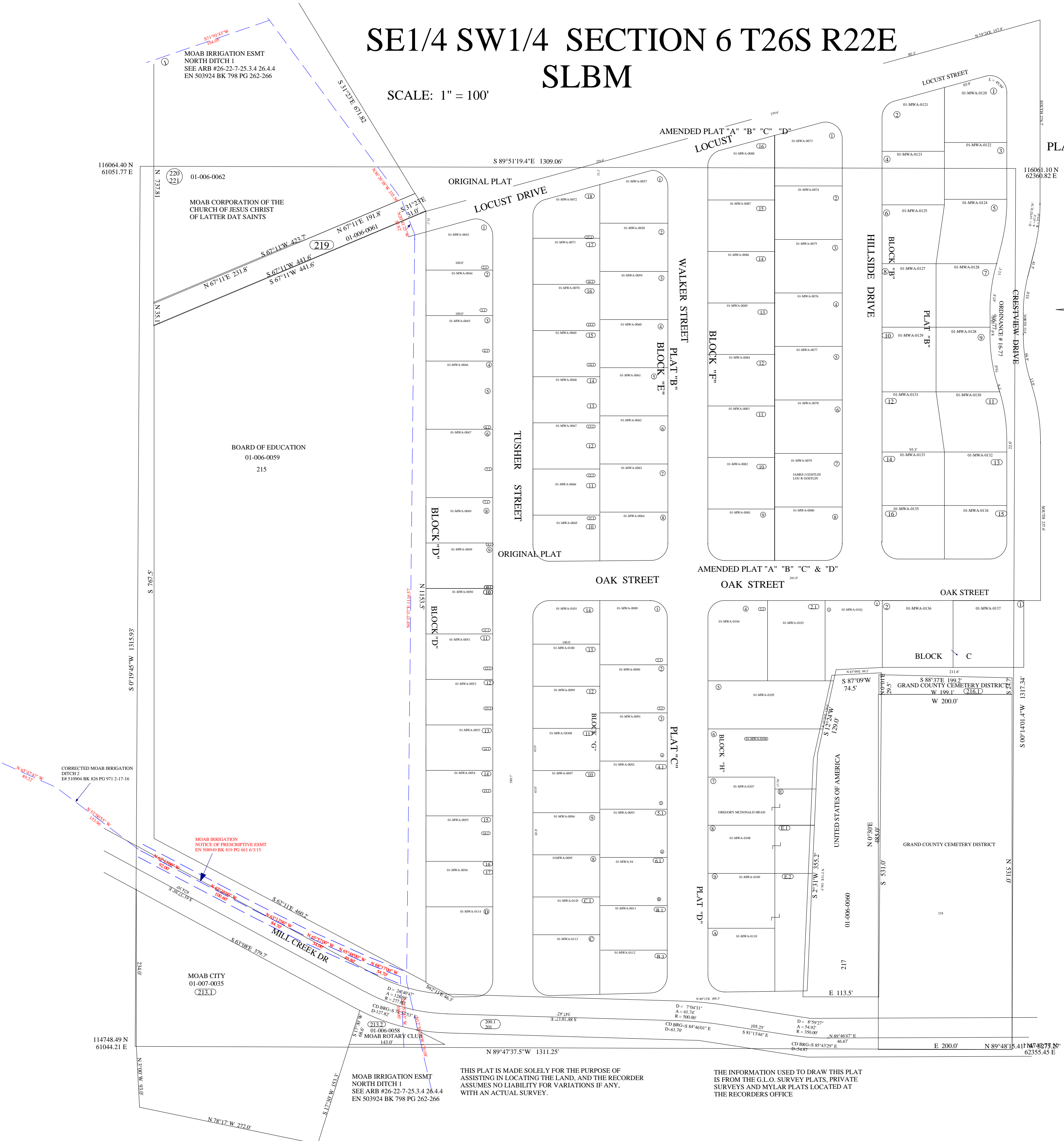
MOAB IRRIGATION CORRECTED DESC. E# 510904 B 826 P 970 2-17-16

CORRECTED MOAB IRRIGATION NOTICE OF PRESCRIPTIVE E# 510904 BK 836 PG 970 2-17-16 BK 819 PG 661 6/3/15



SE1/4 SW1/4 SECTION 6 T26S R22E SLBM

SCALE: 1" = 100'



MOAB IRRIGATION ESMT
NORTH DITCH 1
SEE ARB #26-22-7-25.3.4 26.4.4
EN 503924 BK 798 PG 262-266

MOAB CORPORATION OF THE
CHURCH OF JESUS CHRIST
OF LATTER DAY SAINTS

BOARD OF EDUCATION
01-006-0059
215

MOAB CITY
01-007-0035
(213.1)

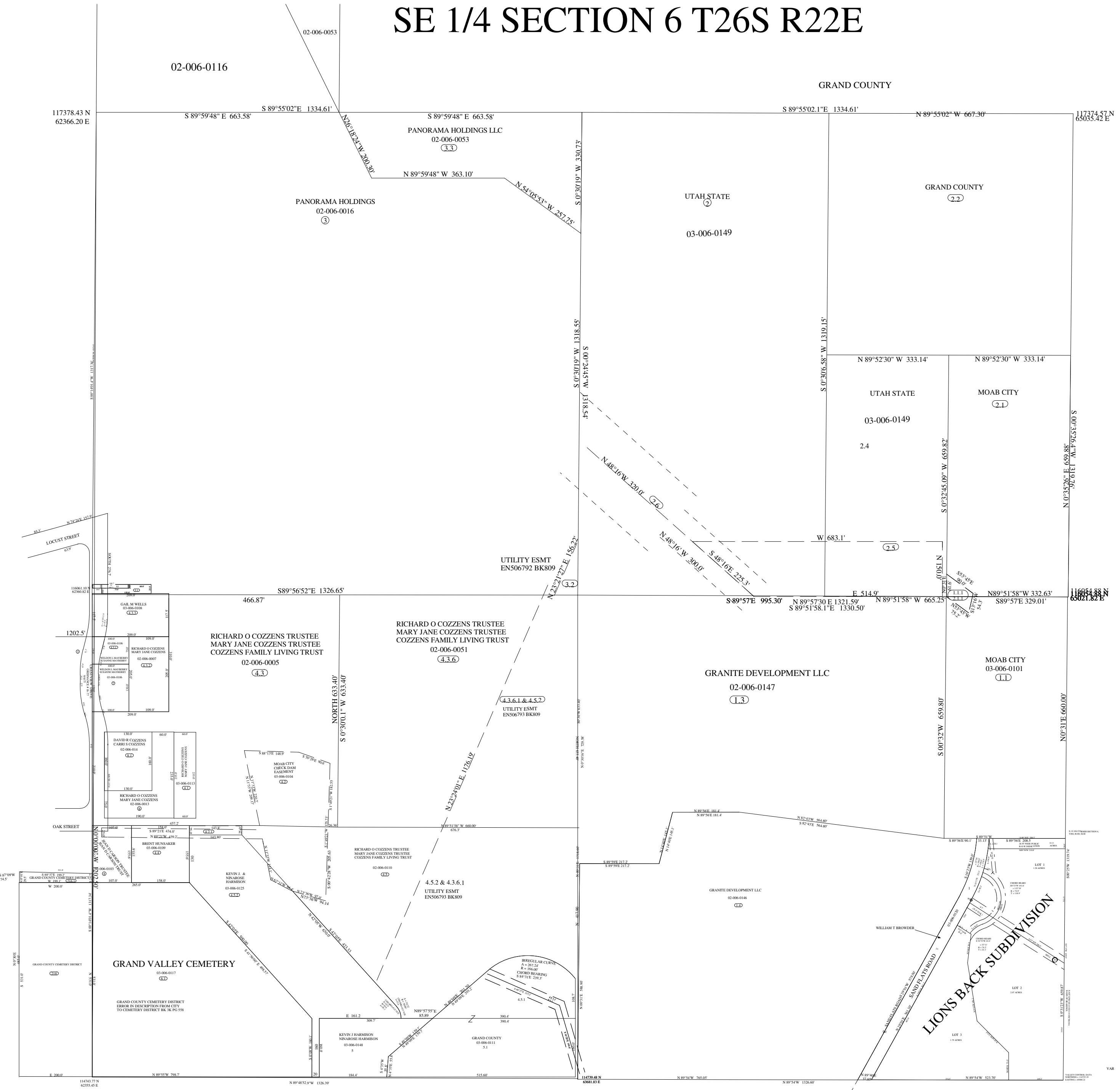
MOAB IRRIGATION ESMT
NORTH DITCH 1
SEE ARB #26-22-7-25.3.4 26.4.4
EN 503924 BK 798 PG 262-266

THIS PLAT IS MADE SOLELY FOR THE PURPOSE OF
ASSISTING IN LOCATING THE LAND, AND THE RECORDER
ASSUMES NO LIABILITY FOR VARIATIONS IF ANY,
WITH AN ACTUAL SURVEY.

THE INFORMATION USED TO DRAW THIS PLAT
IS FROM THE G.L.O. SURVEY PLATS, PRIVATE
SURVEYS AND MYLAR PLATS LOCATED AT
THE RECORDERS OFFICE

SE 1/4 SECTION 6 T26S R22E

GRAND COUNTY



NW1/4SE1/4 SECTION 6 T26S R22E SLB&M

SCALE: 1" = 100'

THIS PLAT IS DRAWN FROM THE PARCEL DESCRIPTIONS AND IS SOLELY FOR THE PURPOSE OF ASSISTING IN LOCATING THE LAND. THE RECORDER'S OFFICE ASSUMES NO LIABILITY FOR VARIATIONS IF ANY, WITH AN ON SITE SURVEY.

117378.43 N
62366.20 E

02-006-0016

02-006-0053

S 89°59'48" E 663.58'

S 89°55'02" E 1334.61'

N 89°59'48" W 663.58'

117378.35 N
63693.36 E

PANORAMA HOLDINGS LLC

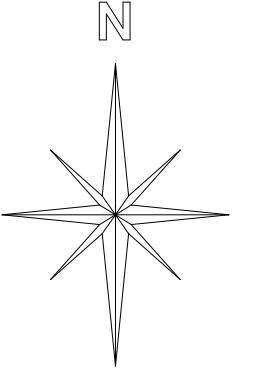
02-006-0053

S 26°18'24" E 200.30'

S 89°59'48" E 363.10'

S 54°05'53" E 257.75'

N 0°30'19" E 330.73'



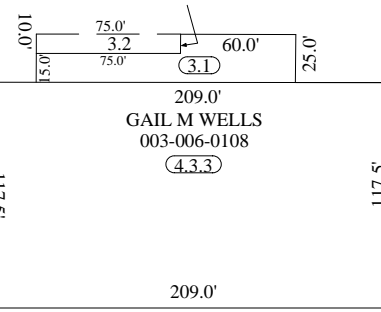
PANORAMA HOLDINGS LLC

02-006-0016

③

S 0°29'W 1317.41'

N 0°30'19" E 1318.55'

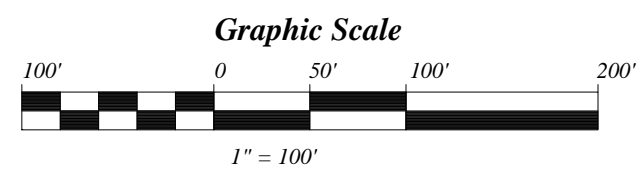


UTILITY ESMT
EN506792 BK809

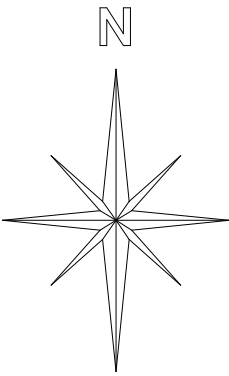
N 23°21'27" E 156.22'
③.2

1166.03'

S 89°56'52" E 1326.65'

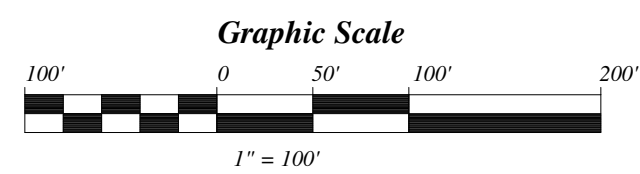


SW1/4SE1/4 SECTION 6 T26S R22E



SCALE: 1" = 100'

THIS PLAT IS MADE SOLELY FOR THE PURPOSES OF ASSISTING IN LOCATING THE LAND, AND THE RECORDER'S OFFICE ASSUMES NO LIABILITY FOR VARIATIONS IF ANY, WITH AN ACTUAL SURVEY.



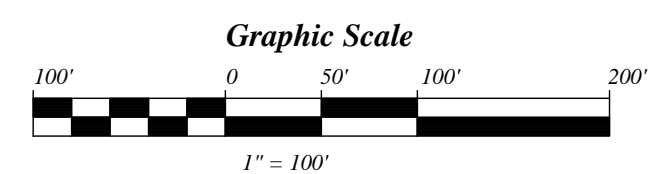
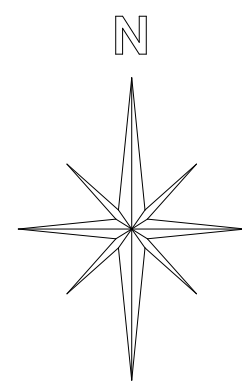
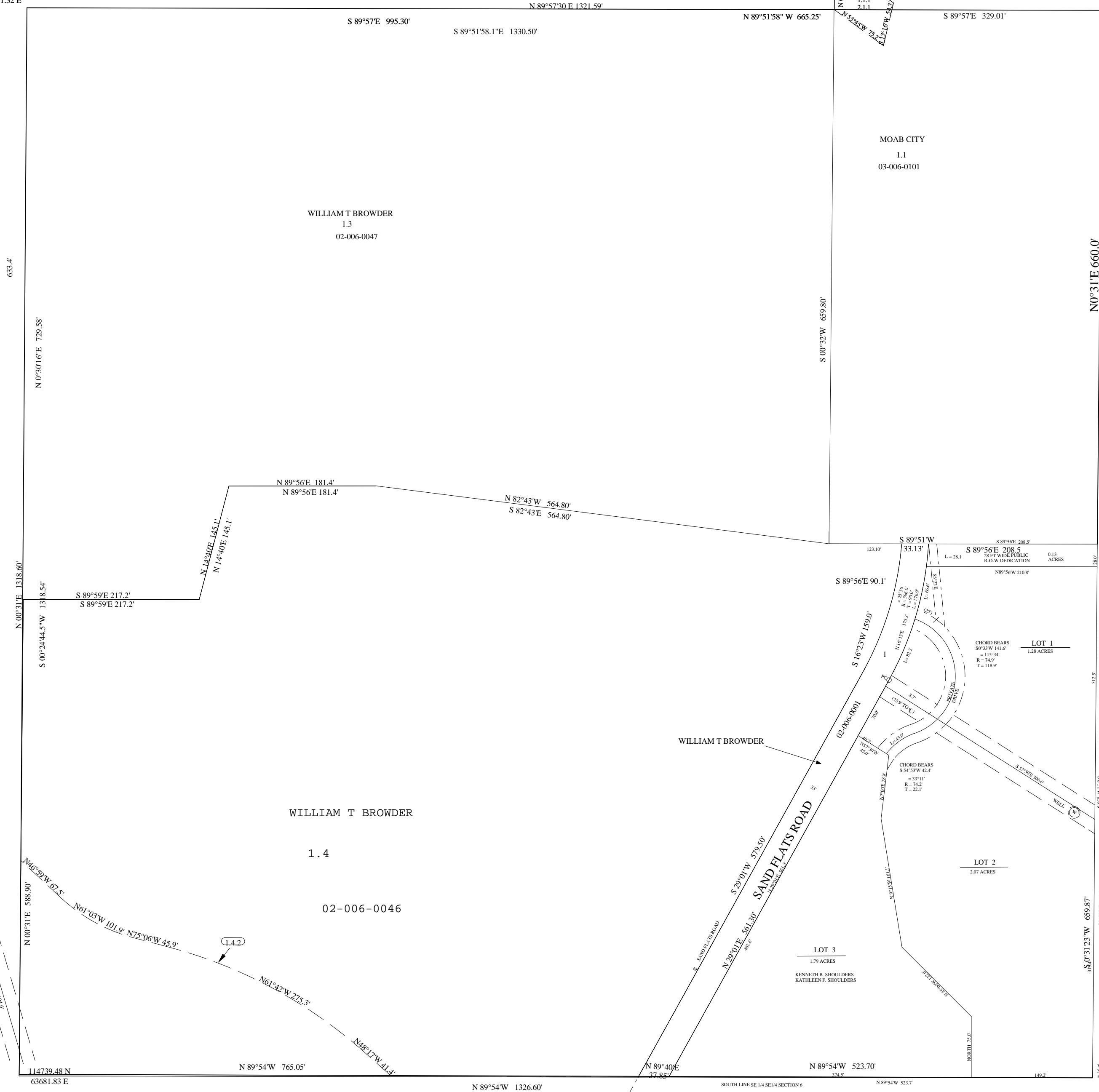
SE1/4SE1/4 SECTION 6 T26S R22E SLBM

THIS PLAT IS DRAWN FROM THE PARCEL DESCRIPTIONS
AND IS SOLELY FOR THE PURPOSE OF ASSISTING IN LOCATING
THE LAND.
THE RECORDER'S OFFICE ASSUMES NO LIABILITY
FOR VARIATIONS IF ANY, WITH AN ON SITE SURVEY.

SCALE: 1" = 100'

116057.99 N
63691.32 E

116054.88 N
65021.82 E



VAR

VALLEY CONTROL DATA
NORTHING = 114735.19
EASTING = 65006.21