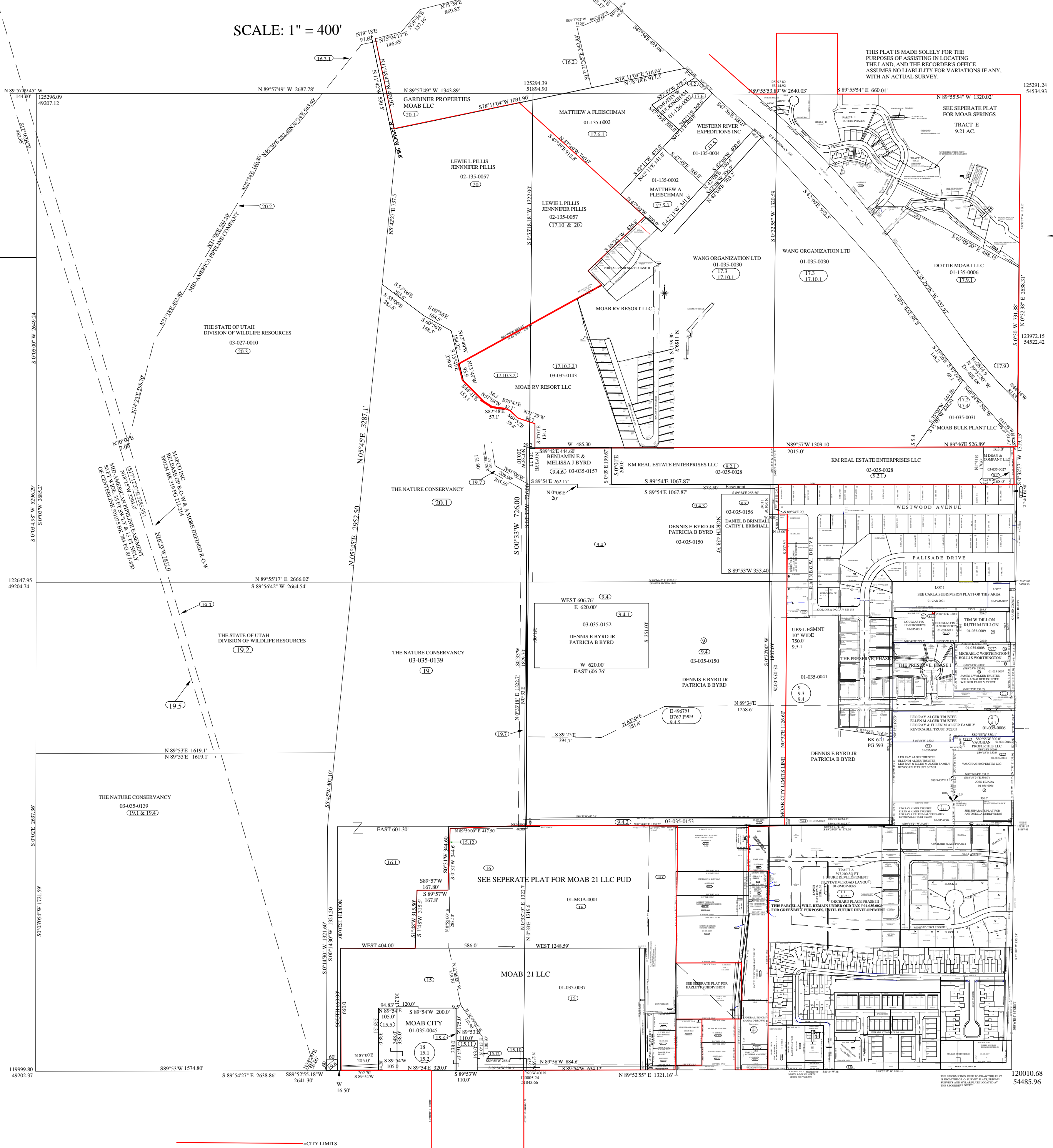
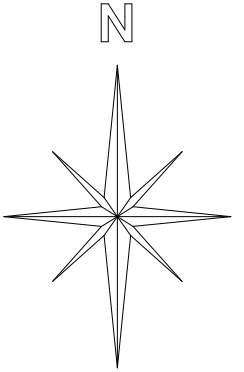


SECTION 35 T25S R21E SLM

SCALE: 1" = 400'

THIS PLAT IS MADE SOLELY FOR THE PURPOSES OF ASSISTING IN LOCATING THE LAND, AND THE RECORDER'S OFFICE ASSUMES NO LIABILITY FOR VARIATIONS IF ANY, WITH AN ACTUAL SURVEY.



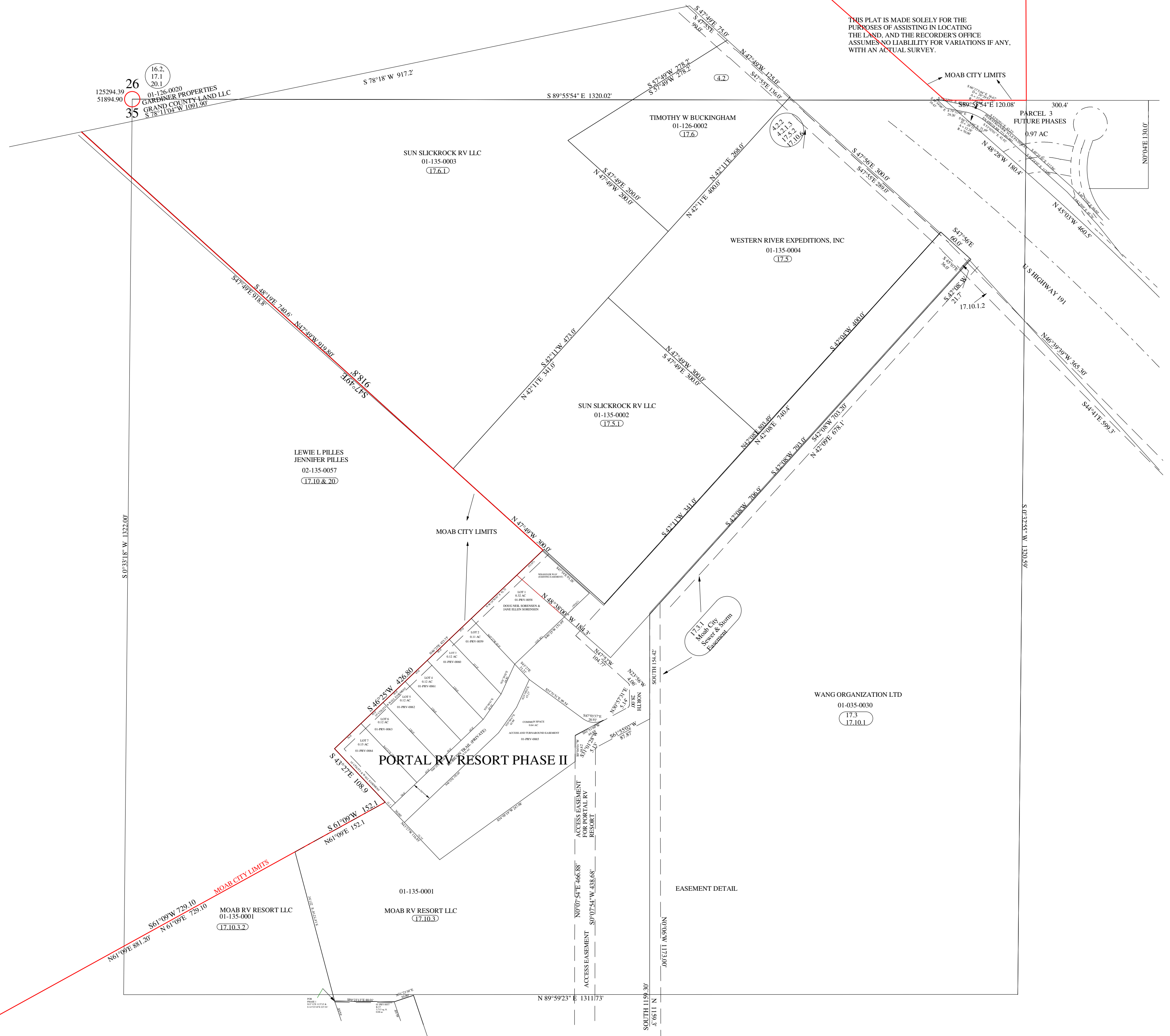
119999.80
49202.37

120010.88
54485.96

CITY LIMITS

NW1/4NE1/4 SECTION 35 T25S R21E SLM

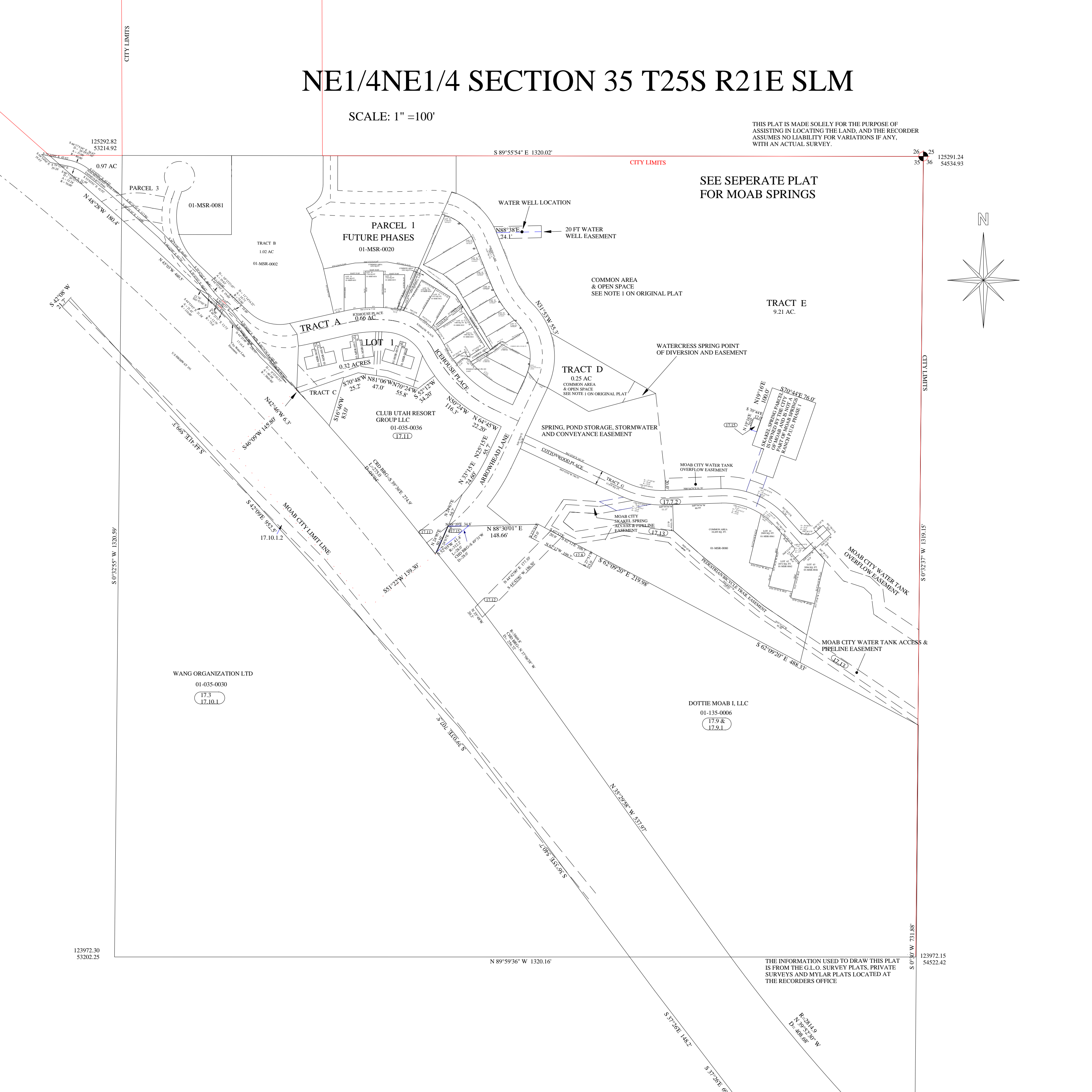
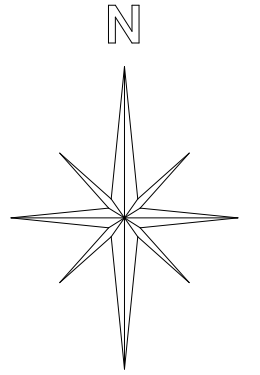
THIS PLAT IS MADE SOLELY FOR THE PURPOSES OF ASSISTING IN LOCATING THE LAND, AND THE RECORDER'S OFFICE ASSUMES NO LIABILITY FOR VARIATIONS IF ANY, WITH AN ACTUAL SURVEY.



NE1/4NE1/4 SECTION 35 T25S R21E SLM

SCALE: 1" = 100'

THIS PLAT IS MADE SOLELY FOR THE PURPOSE OF ASSISTING IN LOCATING THE LAND, AND THE RECORDER ASSUMES NO LIABILITY FOR VARIATIONS IF ANY, WITH AN ACTUAL SURVEY.



SEE SEPERATE PLAT FOR MOAB SPRINGS

TRACT E
9.21 AC.

COMMON AREA & OPEN SPACE
SEE NOTE 1 ON ORIGINAL PLAT

WATERCRESS SPRING POINT OF DIVERSION AND EASEMENT

TRACT D
0.25 AC
COMMON AREA & OPEN SPACE
SEE NOTE 1 ON ORIGINAL PLAT

SPRING, POND STORAGE, STORMWATER AND CONVEYANCE EASEMENT

MOAB CITY WATER TANK OVERFLOW EASEMENT

MOAB CITY SKARDEL SPRING ACCESS & PIPELINE EASEMENT

MOAB CITY WATER TANK OVERFLOW EASEMENT

MOAB CITY WATER TANK ACCESS & PIPELINE EASEMENT

WANG ORGANIZATION LTD
01-035-0030
(17.3
17.10.1)

DOTTIE MOAB I, LLC
01-135-0006
(17.9 &
17.9.1)

THE INFORMATION USED TO DRAW THIS PLAT IS FROM THE G.L.O. SURVEY PLATS, PRIVATE SURVEYS AND MYLAR PLATS LOCATED AT THE RECORDERS OFFICE.

CITY LIMITS

CITY LIMITS

CITY LIMITS

CITY LIMITS

CITY LIMITS

125292.82
53214.92

125291.24
54534.93

123972.30
53202.25

123972.15
54522.42

S 89°55'54" E 1320.02'

N 89°59'36" W 1320.16'

26
35

25
36

S 0°32'37" W 1319.15'

S 0°30' W 731.88'

S 0°32'55" W 1320.59'

0.97 AC

PARCEL 3

01-MSR-0081

TRACT B
1.02 AC
01-MSR-0002

PARCEL 1
FUTURE PHASES
01-MSR-0020

TRACT A
0.66 AC

LOT 1

TRACT C
0.32 ACRES

CLUB UTAH RESORT GROUP LLC
01-035-0036
(17.11)

ICEHOUSE PLACE

TRACT D
0.25 AC
COMMON AREA & OPEN SPACE
SEE NOTE 1 ON ORIGINAL PLAT

SPRING, POND STORAGE, STORMWATER AND CONVEYANCE EASEMENT

MOAB CITY WATER TANK OVERFLOW EASEMENT

MOAB CITY SKARDEL SPRING ACCESS & PIPELINE EASEMENT

MOAB CITY WATER TANK OVERFLOW EASEMENT

MOAB CITY WATER TANK ACCESS & PIPELINE EASEMENT

WANG ORGANIZATION LTD
01-035-0030
(17.3
17.10.1)

DOTTIE MOAB I, LLC
01-135-0006
(17.9 &
17.9.1)

SEE SEPERATE PLAT FOR MOAB SPRINGS

TRACT E
9.21 AC.

COMMON AREA & OPEN SPACE
SEE NOTE 1 ON ORIGINAL PLAT

WATERCRESS SPRING POINT OF DIVERSION AND EASEMENT

TRACT D
0.25 AC
COMMON AREA & OPEN SPACE
SEE NOTE 1 ON ORIGINAL PLAT

SPRING, POND STORAGE, STORMWATER AND CONVEYANCE EASEMENT

MOAB CITY WATER TANK OVERFLOW EASEMENT

MOAB CITY SKARDEL SPRING ACCESS & PIPELINE EASEMENT

MOAB CITY WATER TANK OVERFLOW EASEMENT

MOAB CITY WATER TANK ACCESS & PIPELINE EASEMENT

THE INFORMATION USED TO DRAW THIS PLAT IS FROM THE G.L.O. SURVEY PLATS, PRIVATE SURVEYS AND MYLAR PLATS LOCATED AT THE RECORDERS OFFICE.

CITY LIMITS

01-MSR-0081

01-MSR-0020

01-MSR-0002

01-MSR-0020

01-035-0036

01-035-0036

01-MSR-0081

01-MSR-0081

01-035-0030

01-135-0006

01-MSR-0081

01-MSR-0081

01-MSR-0081

01-MSR-0081

01-MSR-0081

01-MSR-0081

01-MSR-0020

01-MSR-0002

01-MSR-0020

01-035-0036

01-035-0036

01-MSR-0081

01-MSR-0081

01-035-0030

01-135-0006

01-MSR-0081

01-MSR-0081

01-MSR-0081

01-MSR-0081

01-MSR-0081

01-MSR-0081

01-MSR-0020

01-MSR-0002

01-MSR-0020

01-035-0036

01-035-0036

01-MSR-0081

01-MSR-0081

01-035-0030

01-135-0006

01-MSR-0081

01-MSR-0081

01-MSR-0081

01-MSR-0081

01-MSR-0081

01-MSR-0081

01-MSR-0020

01-MSR-0002

01-MSR-0020

01-035-0036

01-035-0036

01-MSR-0081

01-MSR-0081

01-035-0030

01-135-0006

01-MSR-0081

01-MSR-0081

01-MSR-0081

01-MSR-0081

01-MSR-0081

01-MSR-0081

01-MSR-0020

01-MSR-0002

01-MSR-0020

01-035-0036

01-035-0036

01-MSR-0081

01-MSR-0081

01-035-0030

01-135-0006

01-MSR-0081

01-MSR-0081

01-MSR-0081

01-MSR-0081

01-MSR-0081

01-MSR-0081

01-MSR-0020

01-MSR-0002

01-MSR-0020

01-035-0036

01-035-0036

01-MSR-0081

01-MSR-0081

01-035-0030

01-135-0006

01-MSR-0081

01-MSR-0081

01-MSR-0081

01-MSR-0081

01-MSR-0081

01-MSR-0081

01-MSR-0020

01-MSR-0002

01-MSR-0020

01-035-0036

01-035-0036

01-MSR-0081

01-MSR-0081

01-035-0030

01-135-0006

01-MSR-0081

01-MSR-0081

01-MSR-0081

01-MSR-0081

01-MSR-0081

01-MSR-0081

01-MSR-0020

01-MSR-0002

01-MSR-0020

01-035-0036

01-035-0036

01-MSR-0081

01-MSR-0081

01-035-0030

01-135-0006

01-MSR-0081

01-MSR-0081

01-MSR-0081

01-MSR-0081

01-MSR-0081

01-MSR-0081

01-MSR-0020

01-MSR-0002

01-MSR-0020

01-035-0036

01-035-0036

01-MSR-0081

01-MSR-0081

01-035-0030

01-135-0006

01-MSR-0081

01-MSR-0081

01-MSR-0081

01-MSR-0081

01-MSR-0081

01-MSR-0081

01-MSR-0020

01-MSR-0002

01-MSR-0020

01-035-0036

01-035-0036

01-MSR-0081

01-MSR-0081

01-035-0030

01-135-0006

01-MSR-0081

01-MSR-0081

01-MSR-0081

01-MSR-0081

01-MSR-0081

01-MSR-0081

01-MSR-0020

01-MSR-0002

01-MSR-0020

01-035-0036

01-035-0036

01-MSR-0081

01-MSR-0081

01-035-0030

01-135-0006

01-MSR-0081

01-MSR-0081

01-MSR-0081

01-MSR-0081

01-MSR-0081

01-MSR-0081

01-MSR-0020

01-MSR-0002

01-MSR-0020

01-035-0036

01-035-0036

01-MSR-0081

01-MSR-0081

01-035-0030

01-135-0006

01-MSR-0081

01-MSR-0081

01-MSR-0081

01-MSR-0081

01-MSR-0081

01-MSR-0081

01-MSR-0020

01-MSR-0002

01-MSR-0020

01-035-0036

01-035-0036

01-MSR-0081

01-MSR-0081

01-035-0030

01-135-0006

01-MSR-0081

01-MSR-0081

01-MSR-0081

01-MSR-0081

01-MSR-0081

01-MSR-0081

01-MSR-0020

01-MSR-0002

01-MSR-0020

01-035-0036

01-035-0036

01-MSR-0081

01-MSR-0081

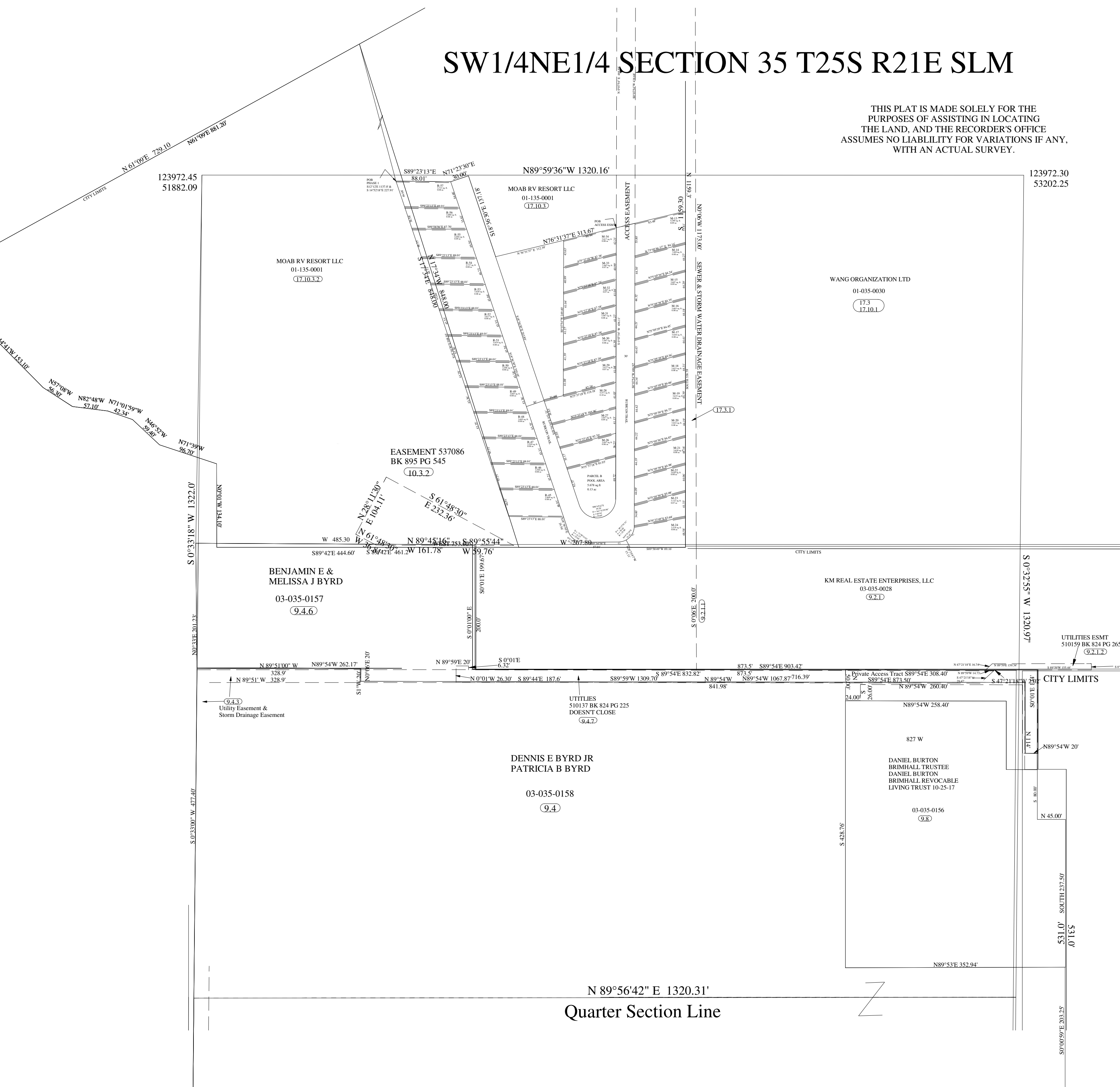
01-035-0030

01-135-0006

01-MSR-0081

SW1/4NE1/4 SECTION 35 T25S R21E SLM

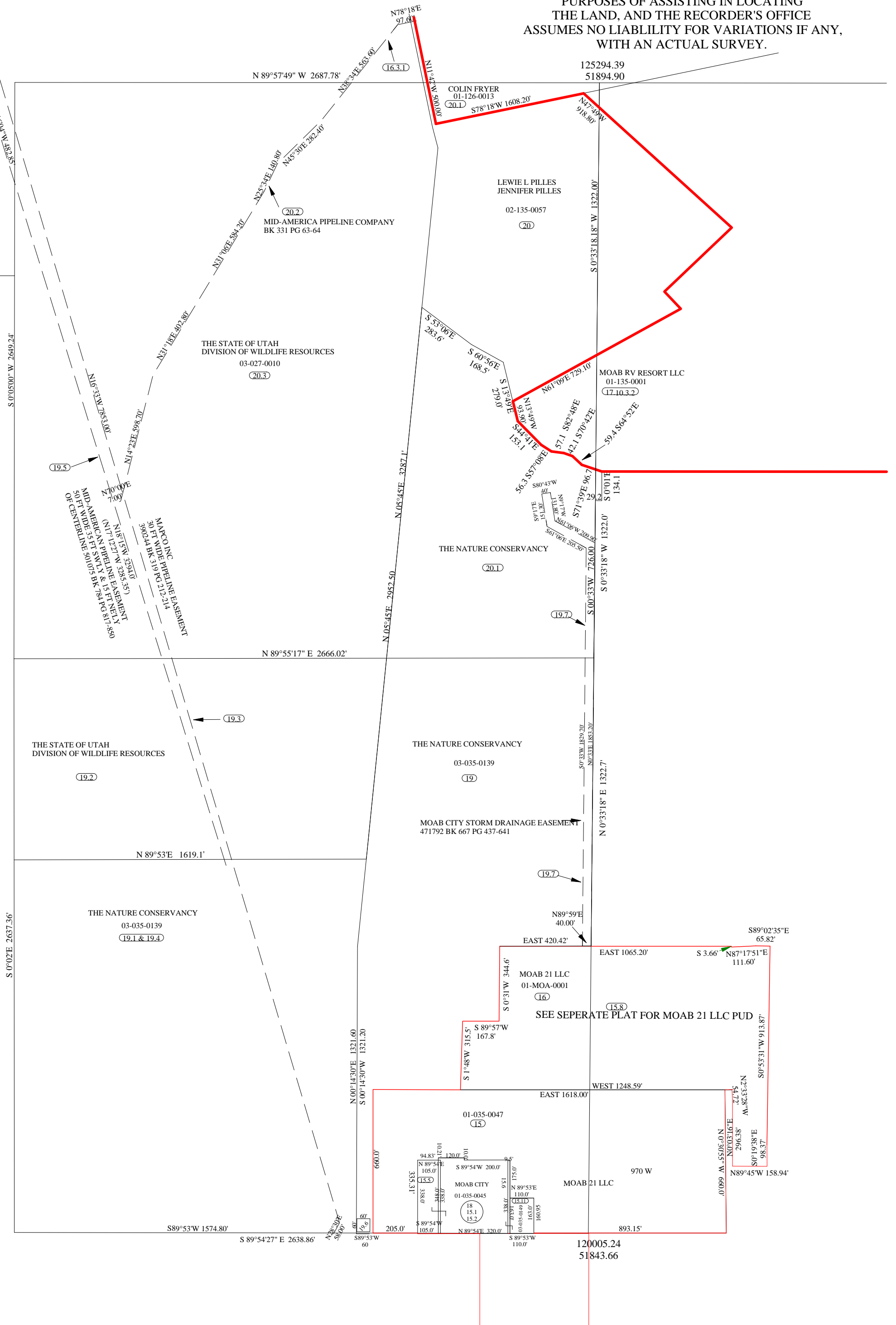
THIS PLAT IS MADE SOLELY FOR THE PURPOSES OF ASSISTING IN LOCATING THE LAND, AND THE RECORDER'S OFFICE ASSUMES NO LIABILITY FOR VARIATIONS IF ANY, WITH AN ACTUAL SURVEY.



W1/2 SECTION 35 T25S R21E SLM

SCALE: 1" = 400'

THIS PLAT IS MADE SOLELY FOR THE PURPOSES OF ASSISTING IN LOCATING THE LAND, AND THE RECORDER'S OFFICE ASSUMES NO LIABILITY FOR VARIATIONS IF ANY, WITH AN ACTUAL SURVEY.

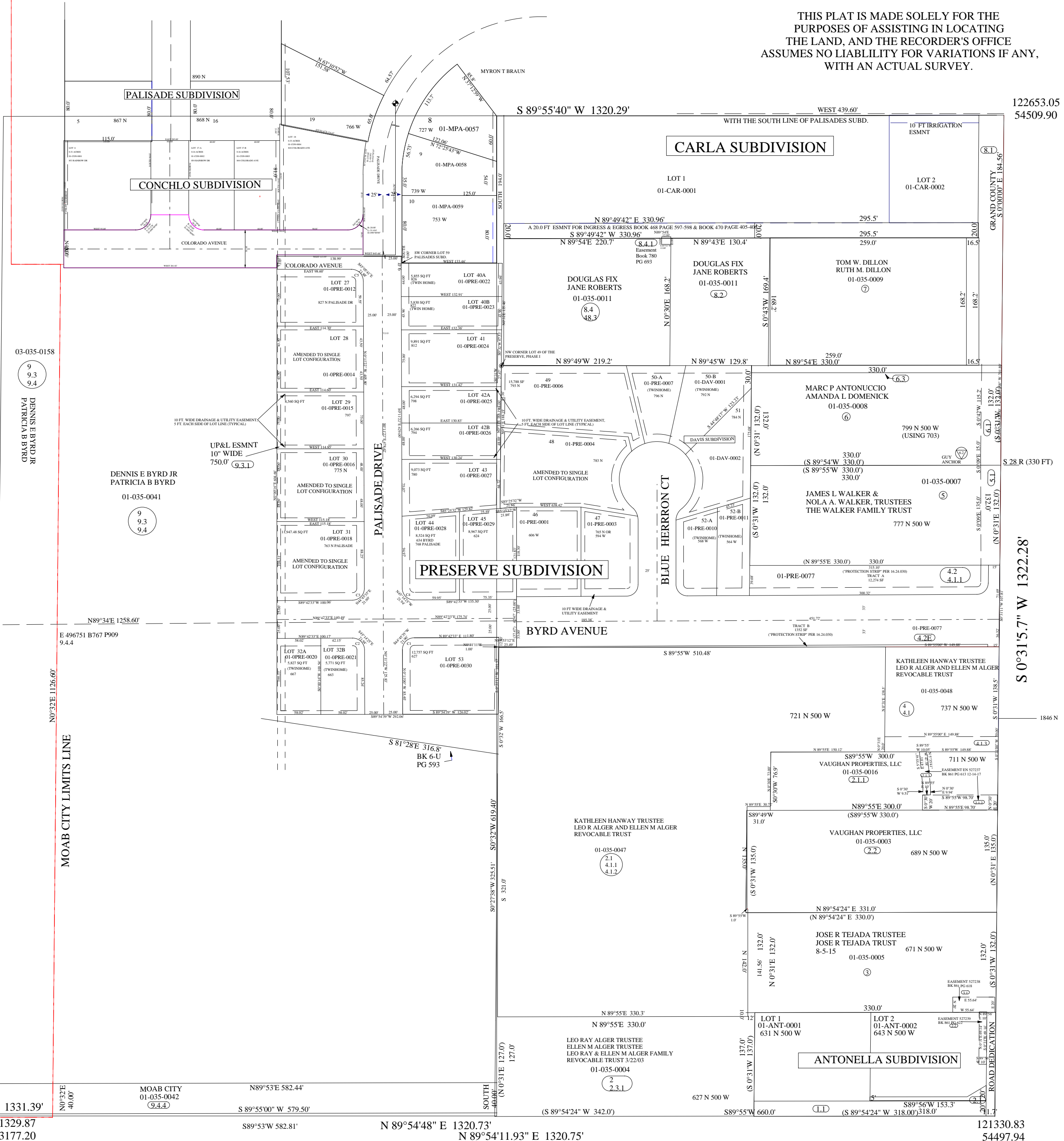


NE1/4SE1/4 SECTION 35 T25S R21E SLBM

THIS PLAT IS MADE SOLELY FOR THE PURPOSES OF ASSISTING IN LOCATING THE LAND, AND THE RECORDER'S OFFICE ASSUMES NO LIABILITY FOR VARIATIONS IF ANY, WITH AN ACTUAL SURVEY.

122651.39
53189.61

122653.05
54509.90



S89°53'W 1980.80'
MOAB CITY 03-035-0153
1980.0 (9.4.2) 1331.39'

121329.87
53177.20

MOAB CITY 01-035-0042
(9.4.4)

N89°53'E 582.44'
S89°55'00" W 579.50'

S89°53'W 582.81'

N 89°54'48" E 1320.73'
N 89°54'11.93" E 1320.75'

627 N 500 W
S89°55'W 660.0'

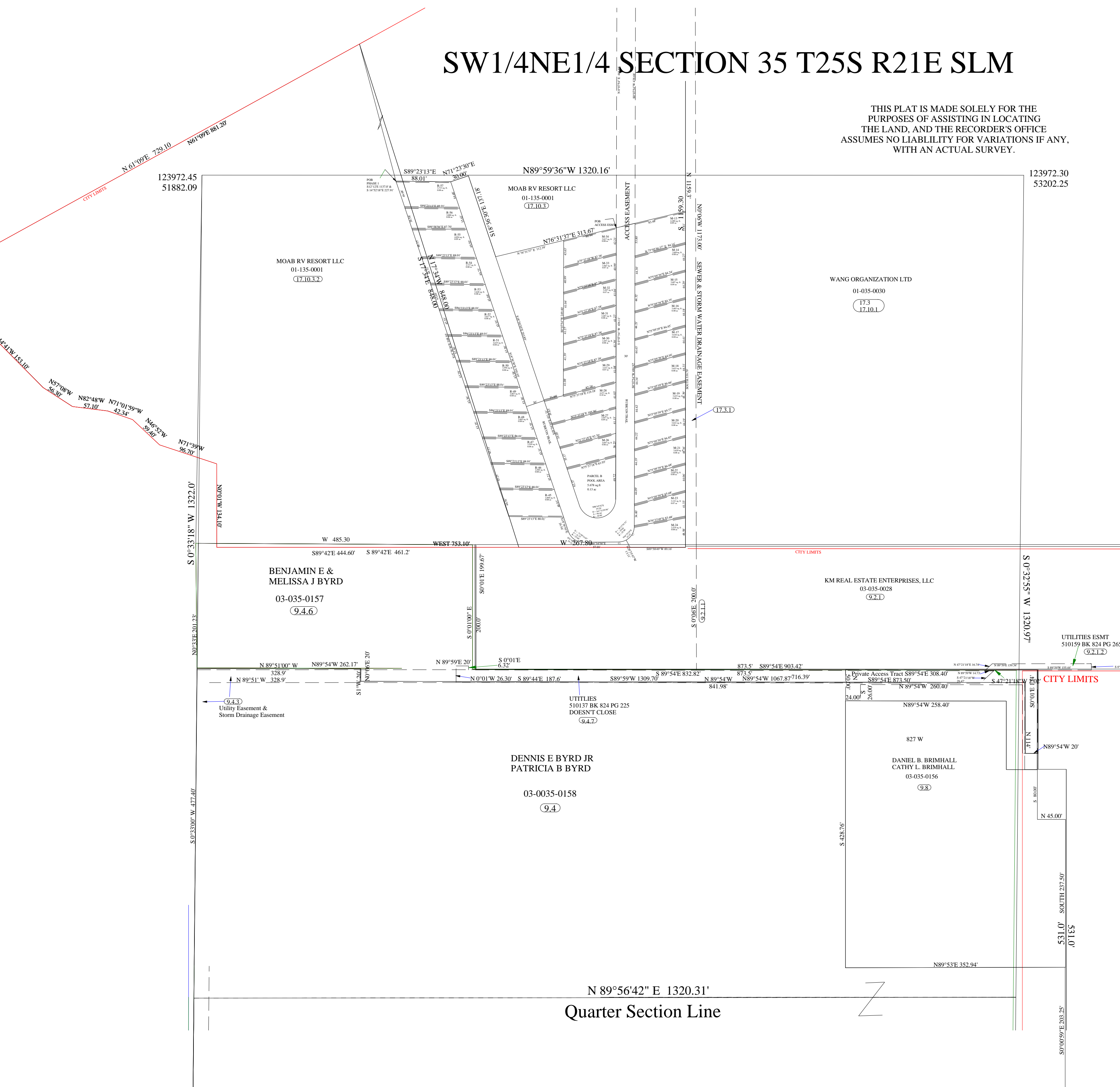
LOT 1 01-ANT-0001
631 N 500 W
LOT 2 01-ANT-0002
645 N 500 W

ANTONELLA SUBDIVISION

121330.83
54497.94

SW1/4NE1/4 SECTION 35 T25S R21E SLM

THIS PLAT IS MADE SOLELY FOR THE PURPOSES OF ASSISTING IN LOCATING THE LAND, AND THE RECORDER'S OFFICE ASSUMES NO LIABILITY FOR VARIATIONS IF ANY, WITH AN ACTUAL SURVEY.



123972.45
51882.09

123972.30
53202.25

MOAB RV RESORT LLC
01-135-0001
(17.10.3.2)

MOAB RV RESORT LLC
01-135-0001
(17.10.3)

WANG ORGANIZATION LTD
01-035-0030
(17.3
17.10.1)

BENJAMIN E &
MELISSA J BYRD
03-035-0157
(9.4.6)

KM REAL ESTATE ENTERPRISES, LLC
03-035-0028
(9.2.1)

DENNIS E BYRD JR
PATRICIA B BYRD
03-0035-0158
(9.4)

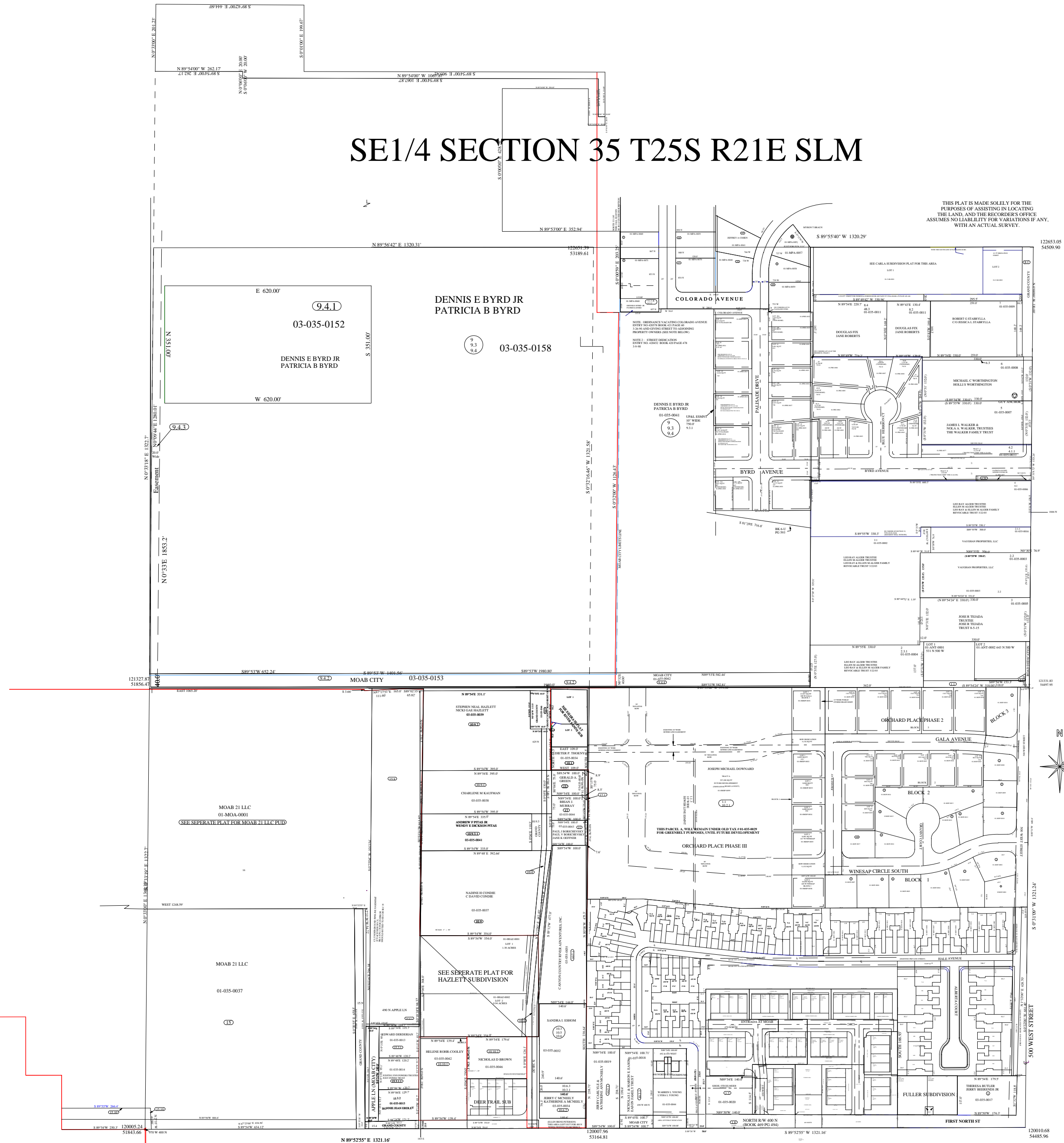
827 W
DANIEL B. BRIMHALL
CATHY L. BRIMHALL
03-035-0156
(9.8)

N 89°56'42" E 1320.31'
Quarter Section Line

531.0'
SOUTH 257.50'
0.155

SE1/4 SECTION 35 T25S R21E SLM

THIS PLAN IS MADE SOLELY FOR THE PURPOSES OF ASSISTING IN LOCATING THE LAND, AND THE RECORDERS OFFICE ASSUMES NO LIABILITY FOR VARIATIONS IF ANY, WITH AN ACTUAL SURVEY.



THE INFORMATION USED TO DRAW THIS PLAN IS FROM THE G.L.O. SURVEY PLATS, PRIVATE SURVEYS, AND MYLAR PLATS LOCATED AT THE RECORDERS OFFICE.

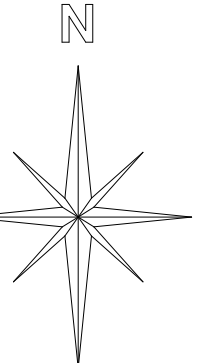
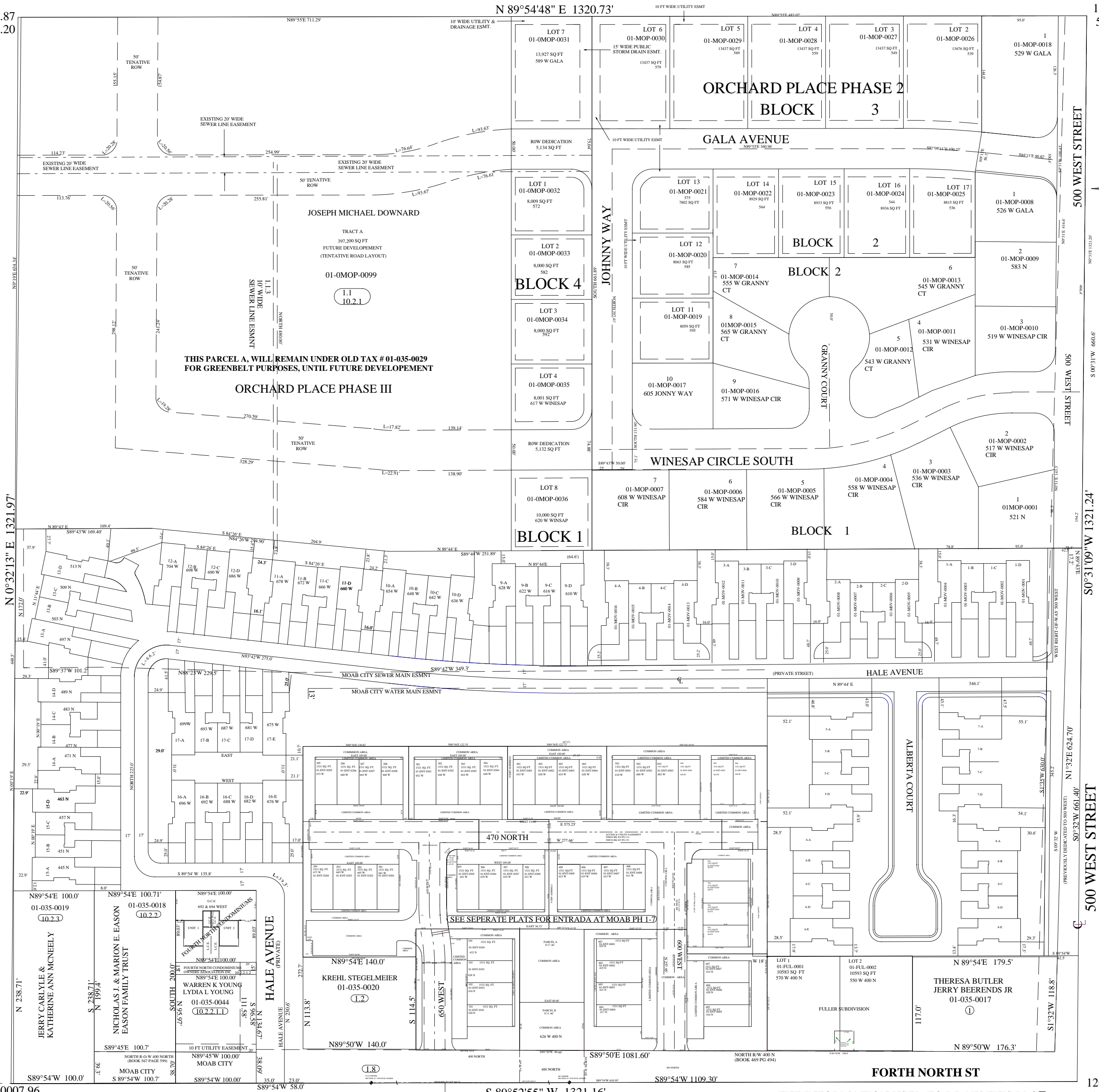
SE1/4SE1/4 SECTION 35 T25S R21E SLM

SCALE: 1" = 100'

THIS PLAT IS MADE SOLELY FOR THE PURPOSE OF ASSISTING IN LOCATING THE LAND, AND THE RECORDER ASSUMES NO LIABILITY FOR VARIATIONS IF ANY, WITH AN ACTUAL SURVEY.

121329.87
53177.20

121331.87
54497.93



N 0°32'13" E 1321.97'

S 0°31'09" W 1321.24'

660.6'

120007.96
53164.81

120010.68
54485.96

S 89°52'55" W 1321.16'

THE INFORMATION USED TO DRAW THIS PLAT IS FROM THE G.L.O. SURVEY PLATS, PRIVATE SURVEYS AND MYLAR PLATS LOCATED AT THE RECORDERS OFFICE

EASON
698 W 400 N
MOAB UT 84532
ROUSER
270 STEWART LN
MOAB UT 84532

1017.30'