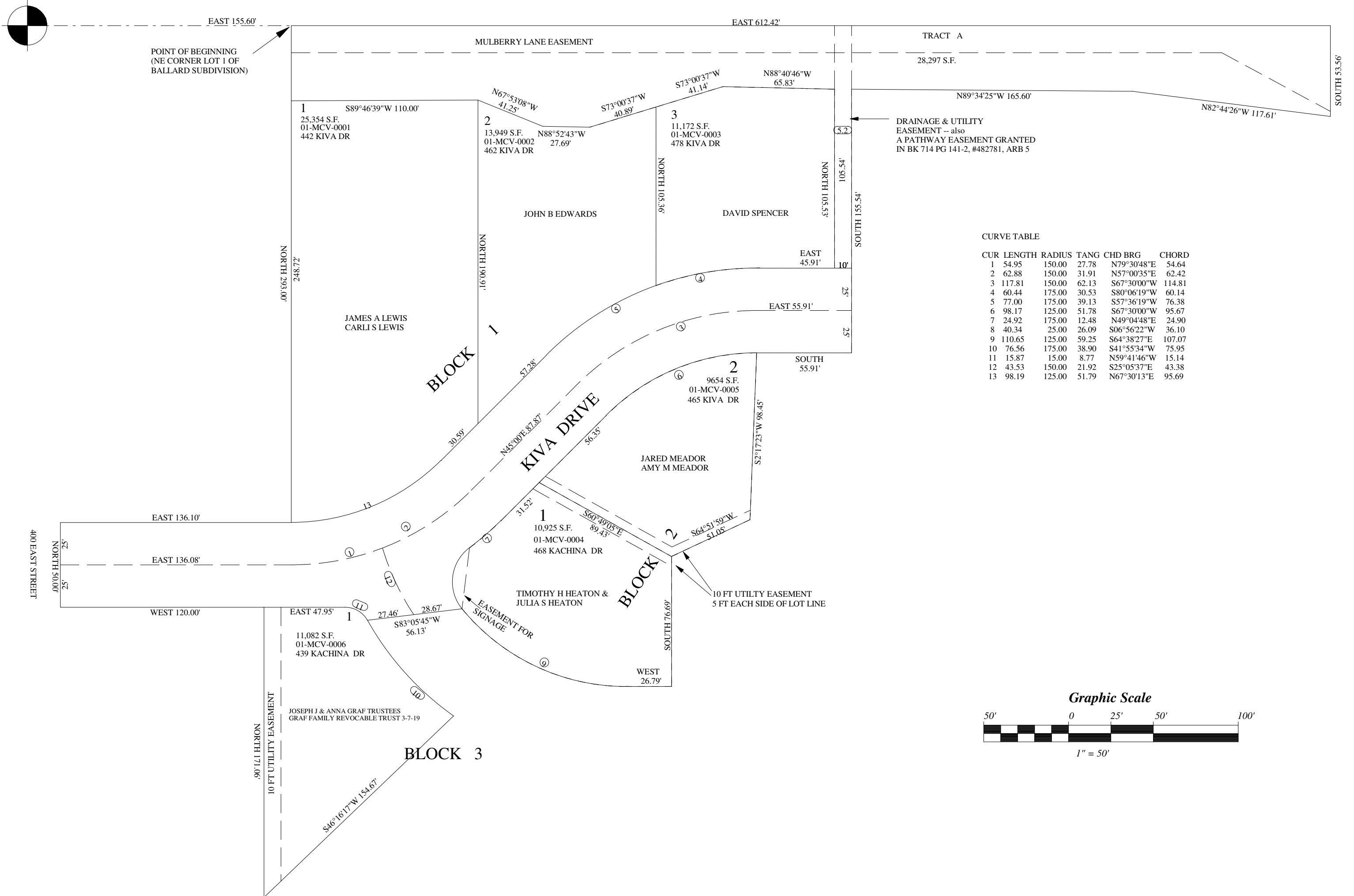


MILL CREEK COVE, PHASE 1

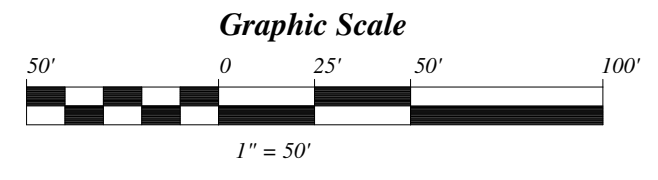
A SUBD OF PARCEL A, BALLARD SUBD. & PARCEL B BALLARD SUBD ADD #1
WITHIN THE NW¹/₄NW¹/₄ SECTION 7 T26S R22E SLM

THIS PLAT IS FOR NAME CHANGE RECORDS ONLY
SEE OFFICIAL PLAT FOR ALL OTHER PURPOSES



CURVE TABLE

CUR	LENGTH	RADIUS	TANG	CHD BRG	CHORD
1	54.95	150.00	27.78	N79°30'48"E	54.64
2	62.88	150.00	31.91	N57°00'35"E	62.42
3	117.81	150.00	62.13	S67°30'00"W	114.81
4	60.44	175.00	30.53	S80°06'19"W	60.14
5	77.00	175.00	39.13	S57°36'19"W	76.38
6	98.17	125.00	51.78	S67°30'00"W	95.67
7	24.92	175.00	12.48	N49°04'48"E	24.90
8	40.34	25.00	26.09	S06°56'22"W	36.10
9	110.65	125.00	59.25	S64°38'27"E	107.07
10	76.56	175.00	38.90	S41°55'34"W	75.95
11	15.87	15.00	8.77	N59°41'46"W	15.14
12	43.53	150.00	21.92	S25°05'37"E	43.38
13	98.19	125.00	51.79	N67°30'13"E	95.69

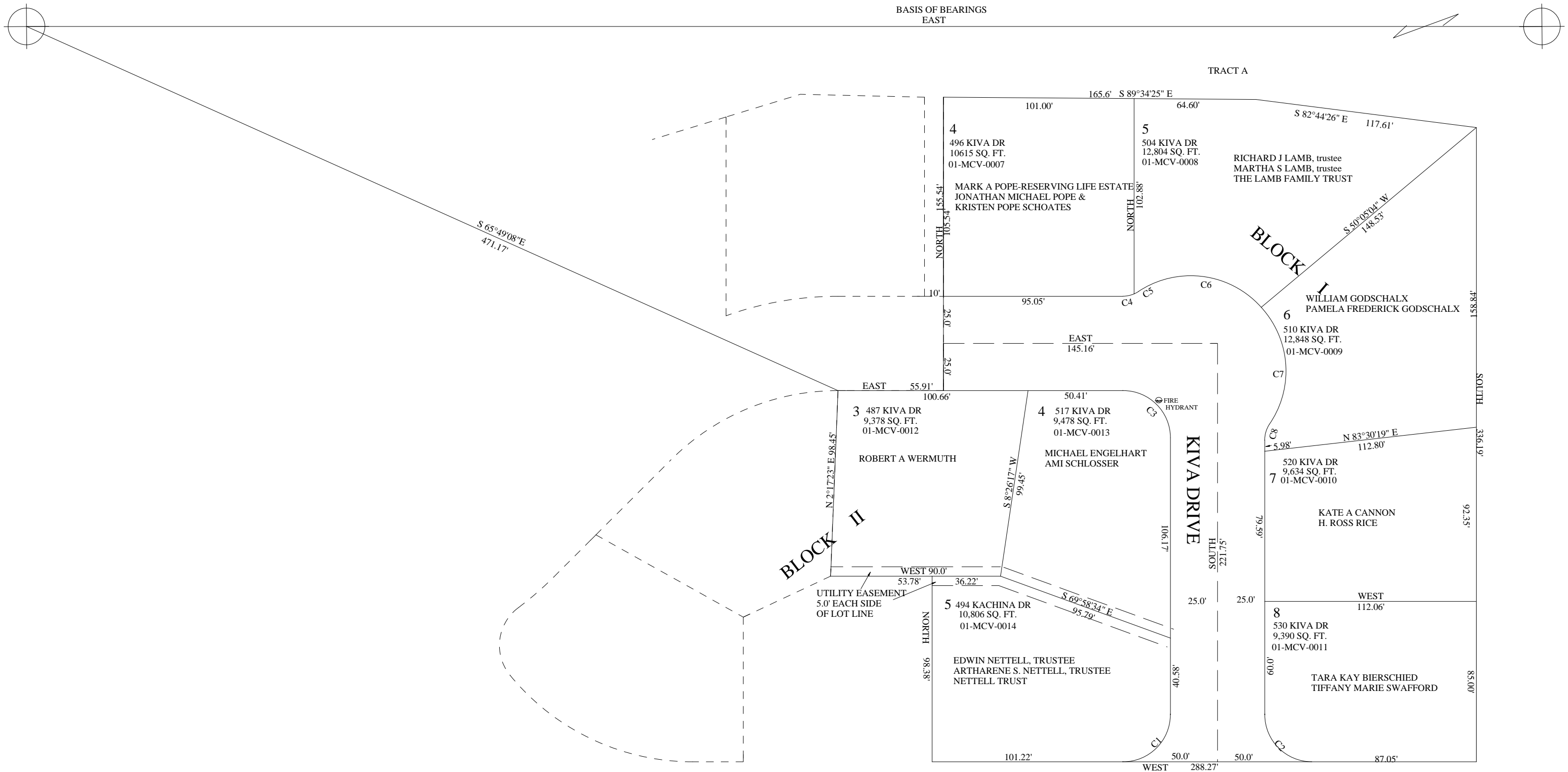


MILL CREEK COVE, PHASE 2

A SUBDIVISION OF PARCEL A, BALLARD SUBDIVISION & PARCEL B BALLARD SUBDIVISION ADDITION #1
 WITHIN THE NW¹/₄NW¹/₄ SECTION 7 T26S R22E SLM
 MOAB CITY, GRAND COUNTY, UTAH

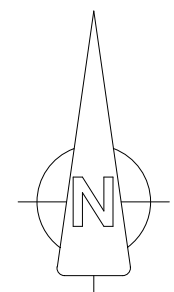
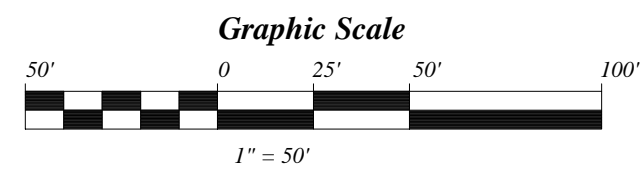
THIS PLAT IS FOR NAME CHANGE RECORDS ONLY
 SEE OFFICIAL PLAT FOR ALL OTHER PURPOSES

BASIS OF BEARINGS
 EAST



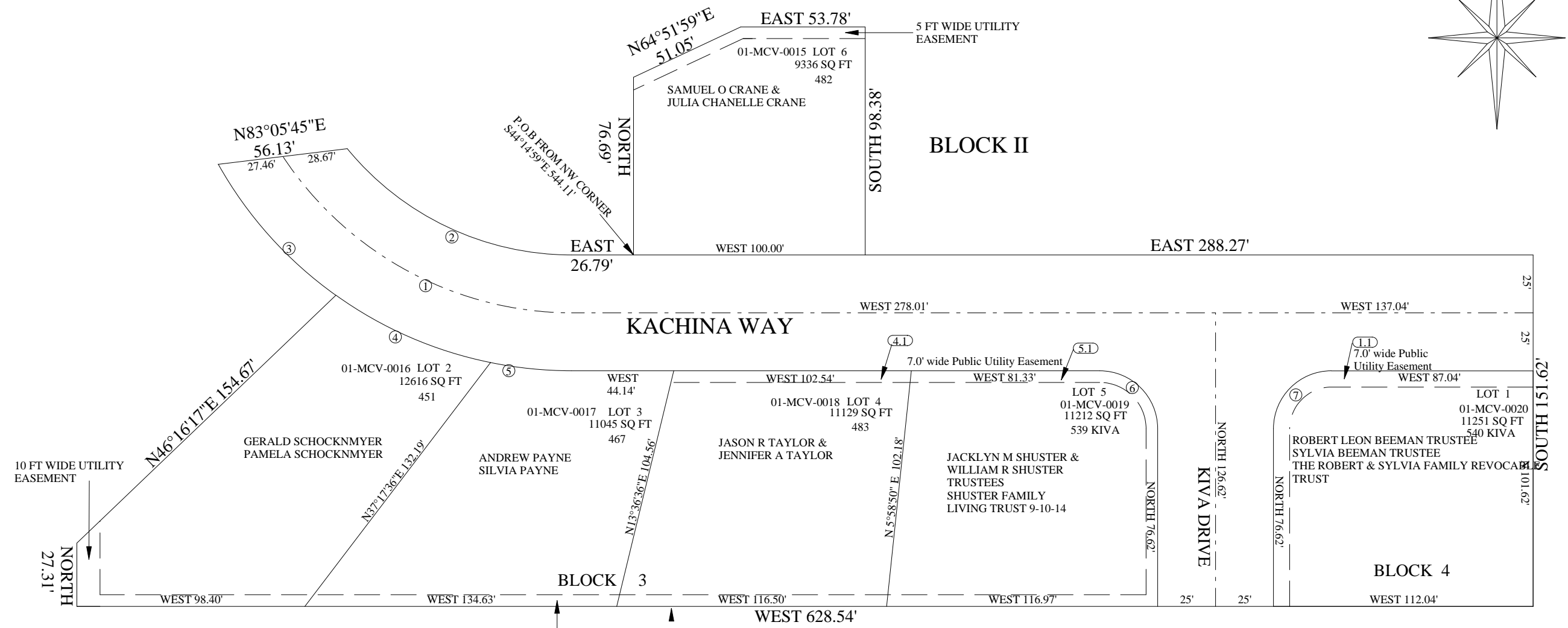
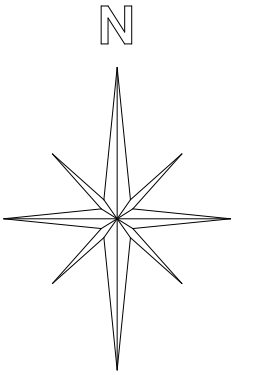
CURVE TABLE

CUR	RAD	LENGTH	TANGENT	CHD	BRG	CHORD
C1	25.00'	39.27'	25.00'	N45°00'00"E		35.36
C2	25.00'	39.27'	25.00'	S45°00'00"E		35.36
C3	25.00'	39.27'	25.00'	N45°00'00"W		35.36
C4	15.00'	6.12'	3.10'	N78°18'35"E		35.36
C5	15.00'	2.67'	1.34'	N61°30'42"E		2.67'
C6	50.00'	71.45'	43.37'	N82°39'37"W		65.52
C7	50.00'	65.73'	38.59'	N04°03'50"W		61.10
C8	15.00'	8.80'	4.53'	S16°47'54"W		8.67'



MILL CREEK COVE PHASE III

A RESIDENTIAL SUBDIVISION
 WITHIN THE NW¼NW¼ SECTION 7 T 26 S, R 22 E, SLM
 MOAB CITY, GRAND COUNTY, UTAH



CURVE 1 A = 148.16' R = 150.00' CHD BRG = S 61°42'13"E CHD = 142.21'	CURVE 2 A = 110.65' R = 125.00' CHD BRG = S 64°38'27"E CHD = 107.07'
CURVE 3 A = 76.56' R = 175.00' CHD BRG = S41°55'34"E CHD = 75.97'	CURVE 4 A = 73.31' R = 175.00' CHD BRG = S66°27'42"E CHD = 72.78'
CURVE 5 A = 35.24' R = 175.00' CHD BRG = S84°13'54"E CHD = 35.18'	CURVE 6 A = 39.27' R = 25.00' CHD BRG = N45°00'00"W CHD = 35.36'
CURVE 7 A = 39.27' R = 25.00' CHD BRG = S45°00'00"W CHD = 35.36'	

