

MOUNTAINVIEW SUBDIVISION

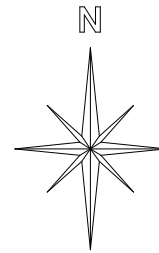


MOUNTAINVIEW SUBDIVISION PLAT A

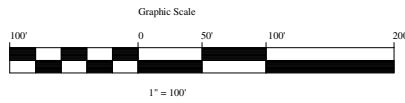
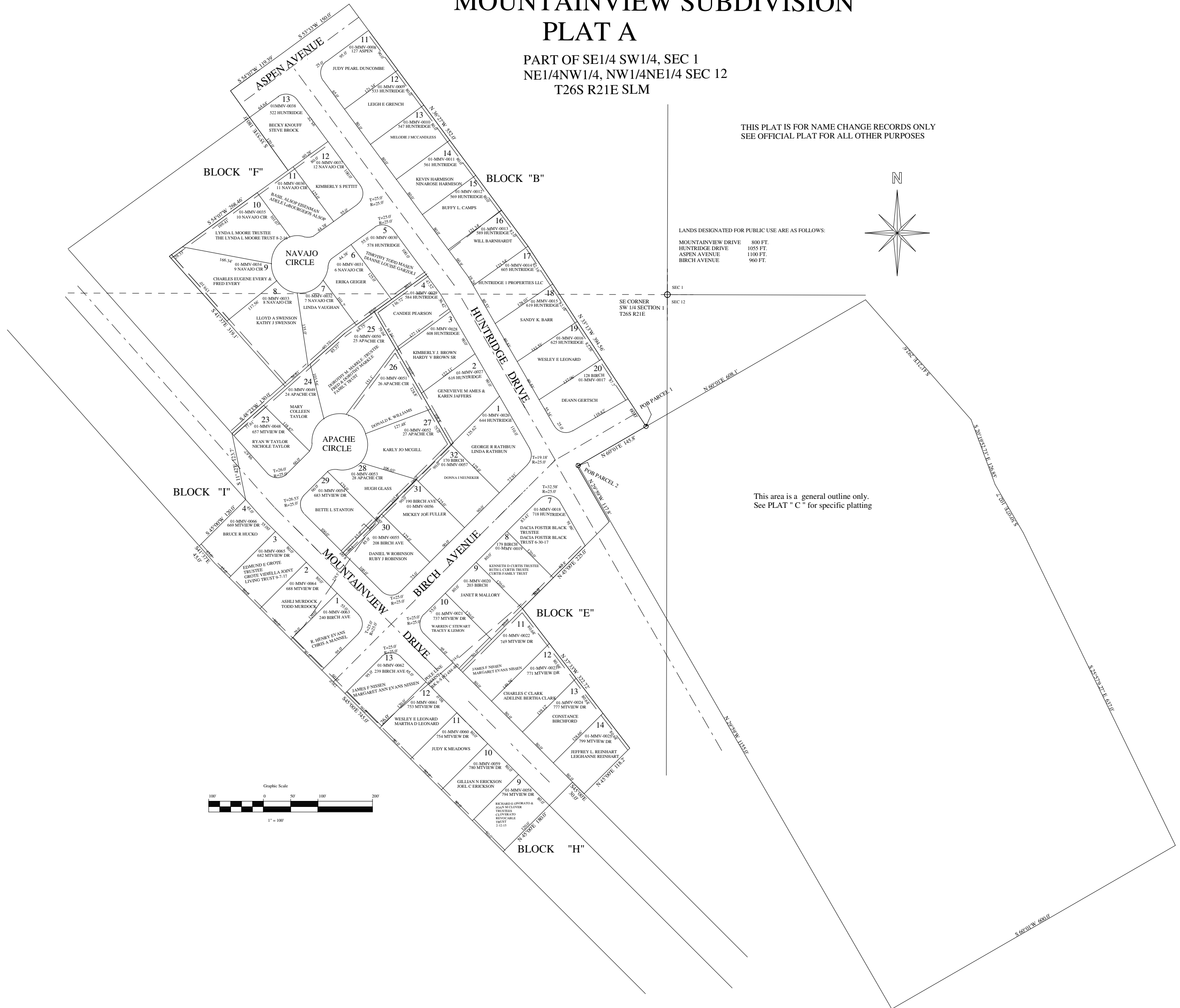
PART OF SE1/4 SW1/4, SEC 1
NE1/4NW1/4, NW1/4NE1/4 SEC 12
T26S R21E SLM

THIS PLAT IS FOR NAME CHANGE RECORDS ONLY
SEE OFFICIAL PLAT FOR ALL OTHER PURPOSES

LANDS DESIGNATED FOR PUBLIC USE ARE AS FOLLOWS:
MOUNTAINVIEW DRIVE 800 FT.
HUNTRIDGE DRIVE 1055 FT.
ASPEN AVENUE 1100 FT.
BIRCH AVENUE 960 FT.



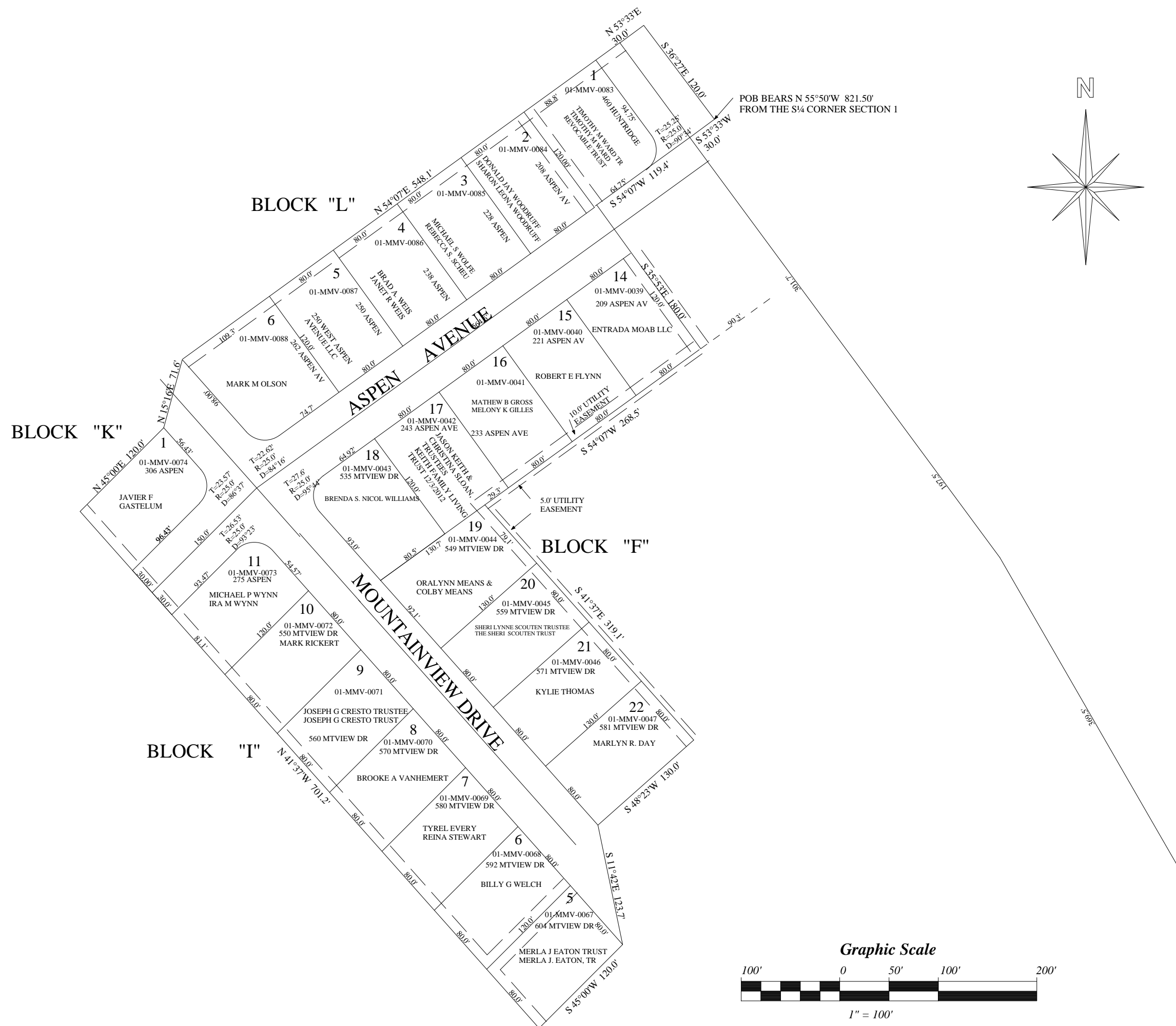
This area is a general outline only.
See PLAT "C" for specific platting



MOUNTAINVIEW SUBDIVISION PLAT "B"

SECTION 12 T26S R21E

THIS PLAT IS FOR NAME CHANGE RECORDS ONLY
SEE OFFICIAL PLAT FOR ALL OTHER PURPOSES



MOUNTAINVIEW SUBDIVISION

PLAT "C"

THIS PLAT IS FOR NAME CHANGE RECORDS ONLY
SEE OFFICIAL PLAT FOR ALL OTHER PURPOSES

A-1 THE UTILITY ESMNT RUNNING E/W THROUGH BLOCK "S" EXTENDED TO INTERSECT WITH THE N/S EASEMENT. THE SOUTH LINES FOR LOT 11 BLOCK "S" THEN BECOMES COMMON WITH THE CENTER LN OF THE TWO ESMNTS ELIMINATING THE NARROW STRIP OF "NO-MAN'S LAND". THIS CHANGE LENGTHENS THE EAST AND WEST SIDE LINES OF LOT 11 BLOCK "S" FROM 169.85' TO 183.75' & THE SIDES OF LOT 2 BLOCK "S" FROM 197.85 TO 183.75' ON THE WEST.

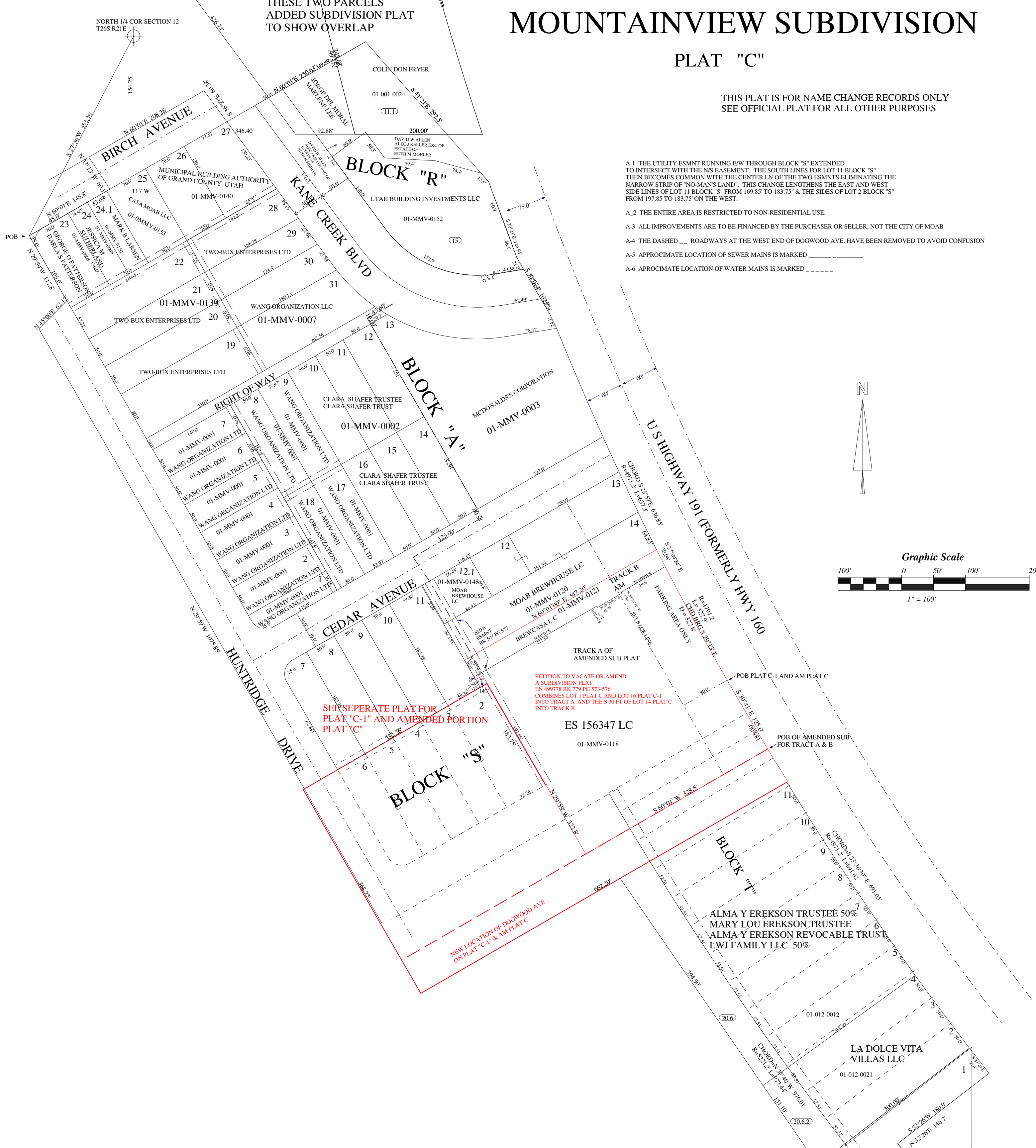
A-2 THE ENTIRE AREA IS RESTRICTED TO NON-RESIDENTIAL USE.

A-3 ALL IMPROVEMENTS ARE TO BE FINANCED BY THE PURCHASER OR SELLER, NOT THE CITY OF MOAB

A-4 THE DASHED __ ROADWAYS AT THE WEST END OF DOGWOOD AVE. HAVE BEEN REMOVED TO AVOID CONFUSION

A-5 APPROXIMATE LOCATION OF SEWER MAINS IS MARKED _____

A-6 APPROXIMATE LOCATION OF WATER MAINS IS MARKED - - - - -



THESE TWO PARCELS
ADDED SUBDIVISION PLAT
TO SHOW OVERLAP

NORTH 1/4 COR SECTION 12
T26S R21E

SEE SEPERATE PLAT FOR
PLAT "C-1" AND AMENDED PORTION
PLAT "C"

PETITION TO VACATE OR AMEND
A SUBDIVISION PLAT
EN 499778 BK 779 PG 573-576
COMBINES LOT 1 PLAT C AND LOT 16 PLAT C-1
INTO TRACK A AND THE S 30 FT OF LOT 14 PLAT C
INTO TRACK B

ES 156347 LC
01-MMV-0118

ALMA Y EREKSON TRUSTEE 50%
MARY LOU EREKSON TRUSTEE
ALMA Y EREKSON REVOCABLE TRUST
LWJ FAMILY LLC 50%

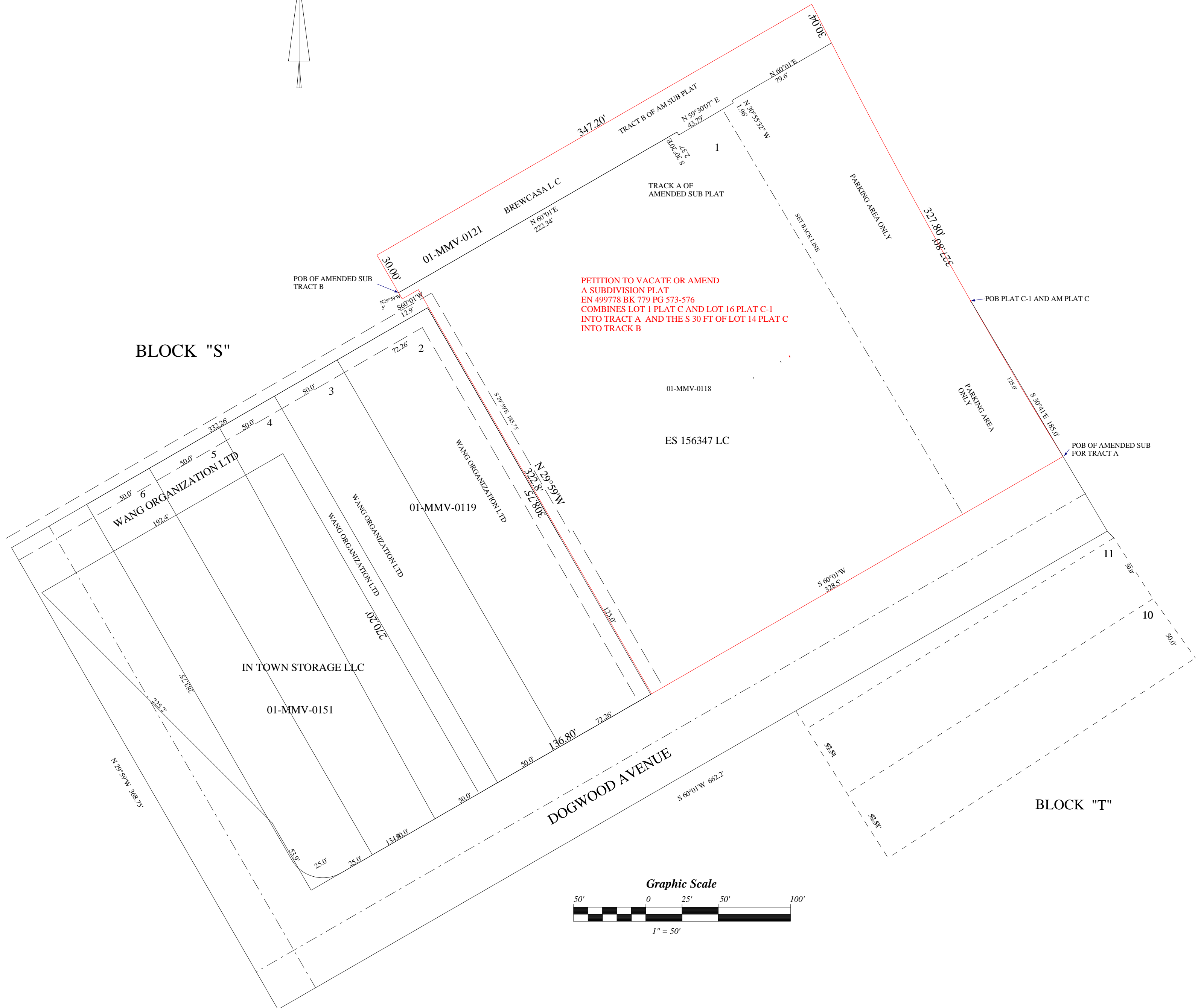
LA DOLCE VITA
VILLAS LLC
01-012-0021

NEW LOCATION OF DOGWOOD AVE
ON PLAT "C-1" & AM PLAT C

MOUNTAINVIEW SUBDIVISION

PLAT "C -1" AND AMENDED PLAT "C"

THIS PLAT IS FOR NAME CHANGE RECORDS ONLY
SEE OFFICIAL PLAT FOR ALL OTHER PURPOSES



MOUNTAINVIEW SUBDIVISION

PLAT "E" AND AMENDED PORTIONS OF PLATS "A", "C", & "C-1"

THIS PLAT IS FOR NAME CHANGE RECORDS ONLY
SEE OFFICIAL PLAT FOR ALL OTHER PURPOSES

