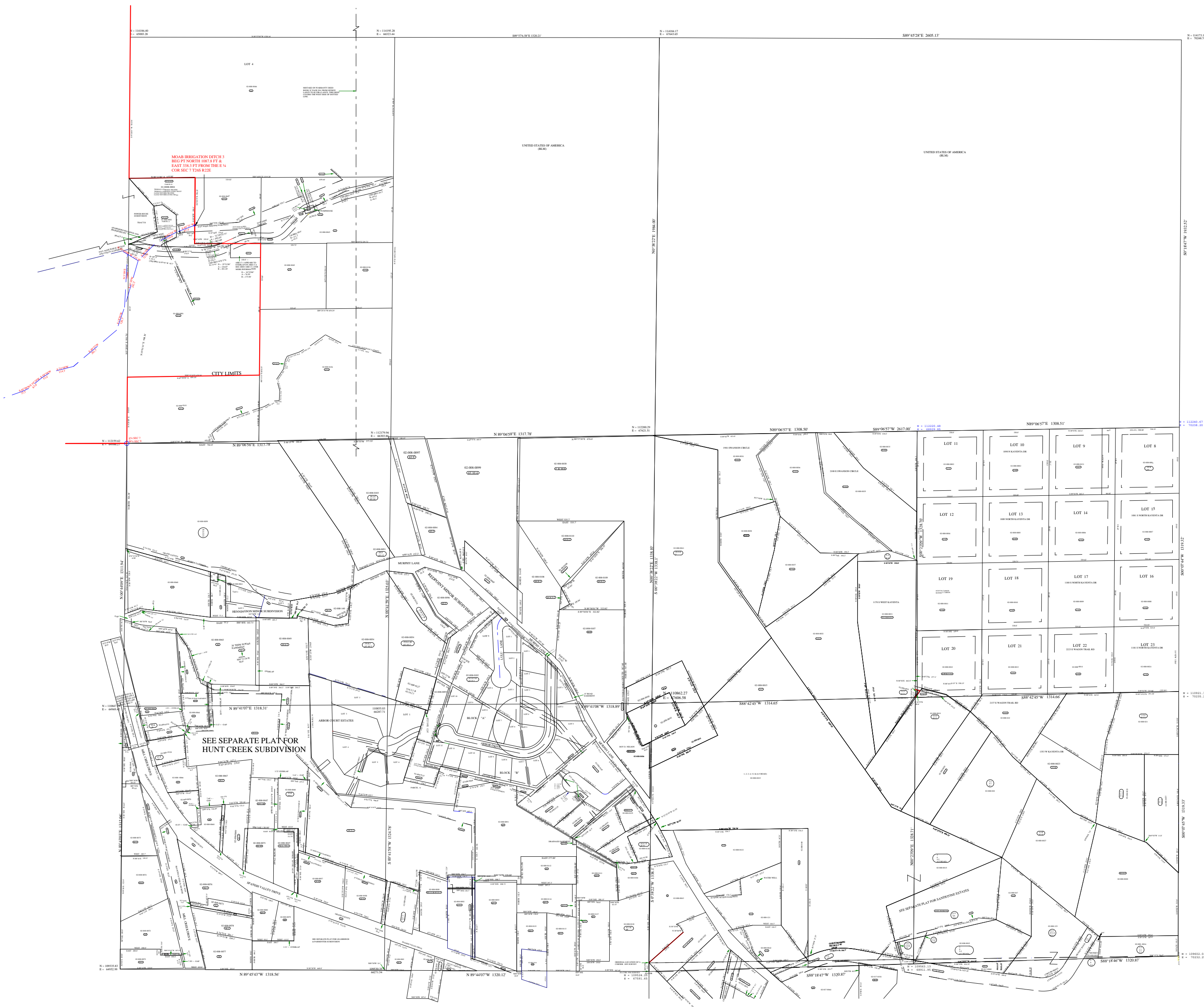


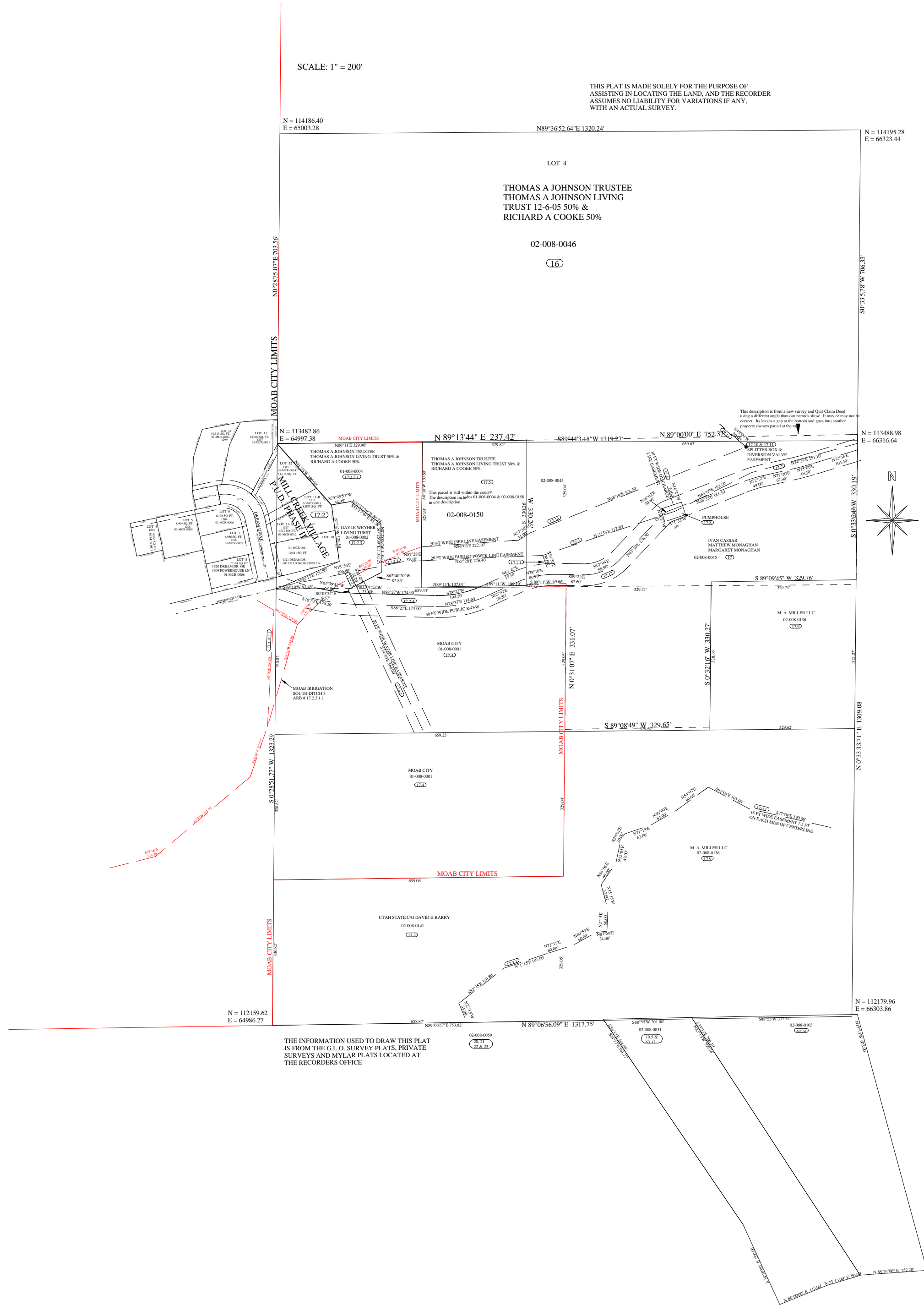
SECTION 8 T26S R22E



(NW1/4NW1/4) LOT 4 SECTION 8, T26S, R22E, SLB&M

SCALE: 1" = 200'

THIS PLAT IS MADE SOLELY FOR THE PURPOSE OF ASSISTING IN LOCATING THE LAND, AND THE RECORDER ASSUMES NO LIABILITY FOR VARIATIONS IF ANY, WITH AN ACTUAL SURVEY.



N = 114186.40
E = 65003.28

N89°36'52.64"E 1320.24'

N = 114195.28
E = 66323.44

LOT 4

THOMAS A JOHNSON TRUSTEE
THOMAS A JOHNSON LIVING
TRUST 12-6-05 50% &
RICHARD A COOKE 50%

02-008-0046

16

MOAB CITY LIMITS

N = 113482.86
E = 64997.38

N 89°13'44" E 237.42'

N 89°00'00" E 752.52'

N = 113488.98
E = 66316.64

MOAB CITY LIMITS

MOAB CITY LIMITS

MOAB CITY LIMITS

MOAB CITY LIMITS

MOAB CITY LIMITS

MOAB CITY LIMITS

MOAB CITY LIMITS

MOAB CITY LIMITS

MOAB CITY LIMITS

MOAB CITY LIMITS

MOAB CITY LIMITS

MOAB CITY LIMITS

MOAB CITY LIMITS

MOAB CITY LIMITS

MOAB CITY LIMITS

MOAB CITY LIMITS

MOAB CITY LIMITS

MOAB CITY LIMITS

MOAB CITY LIMITS

MOAB CITY LIMITS

MOAB CITY LIMITS

MOAB CITY LIMITS

MOAB CITY LIMITS

MOAB CITY LIMITS

MOAB CITY LIMITS

MOAB CITY LIMITS

MOAB CITY LIMITS

MOAB CITY LIMITS

MOAB CITY LIMITS

MOAB CITY LIMITS

MOAB CITY LIMITS

MOAB CITY LIMITS

MOAB CITY LIMITS

MOAB CITY LIMITS

MOAB CITY LIMITS

MOAB CITY LIMITS

MOAB CITY LIMITS

MOAB CITY LIMITS

MOAB CITY LIMITS

MOAB CITY LIMITS

MOAB CITY LIMITS

MOAB CITY LIMITS

MOAB CITY LIMITS

MOAB CITY LIMITS

MOAB CITY LIMITS

MOAB CITY LIMITS

MOAB CITY LIMITS

MOAB CITY LIMITS

MOAB CITY LIMITS

MOAB CITY LIMITS

MOAB CITY LIMITS

MOAB CITY LIMITS

MOAB CITY LIMITS

MOAB CITY LIMITS

MOAB CITY LIMITS

MOAB CITY LIMITS

MOAB CITY LIMITS

MOAB CITY LIMITS

MOAB CITY LIMITS

MOAB CITY LIMITS

MOAB CITY LIMITS

MOAB CITY LIMITS

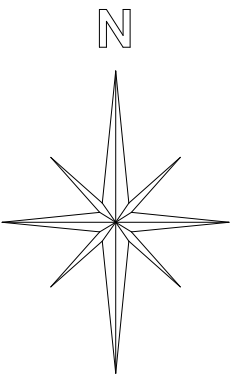
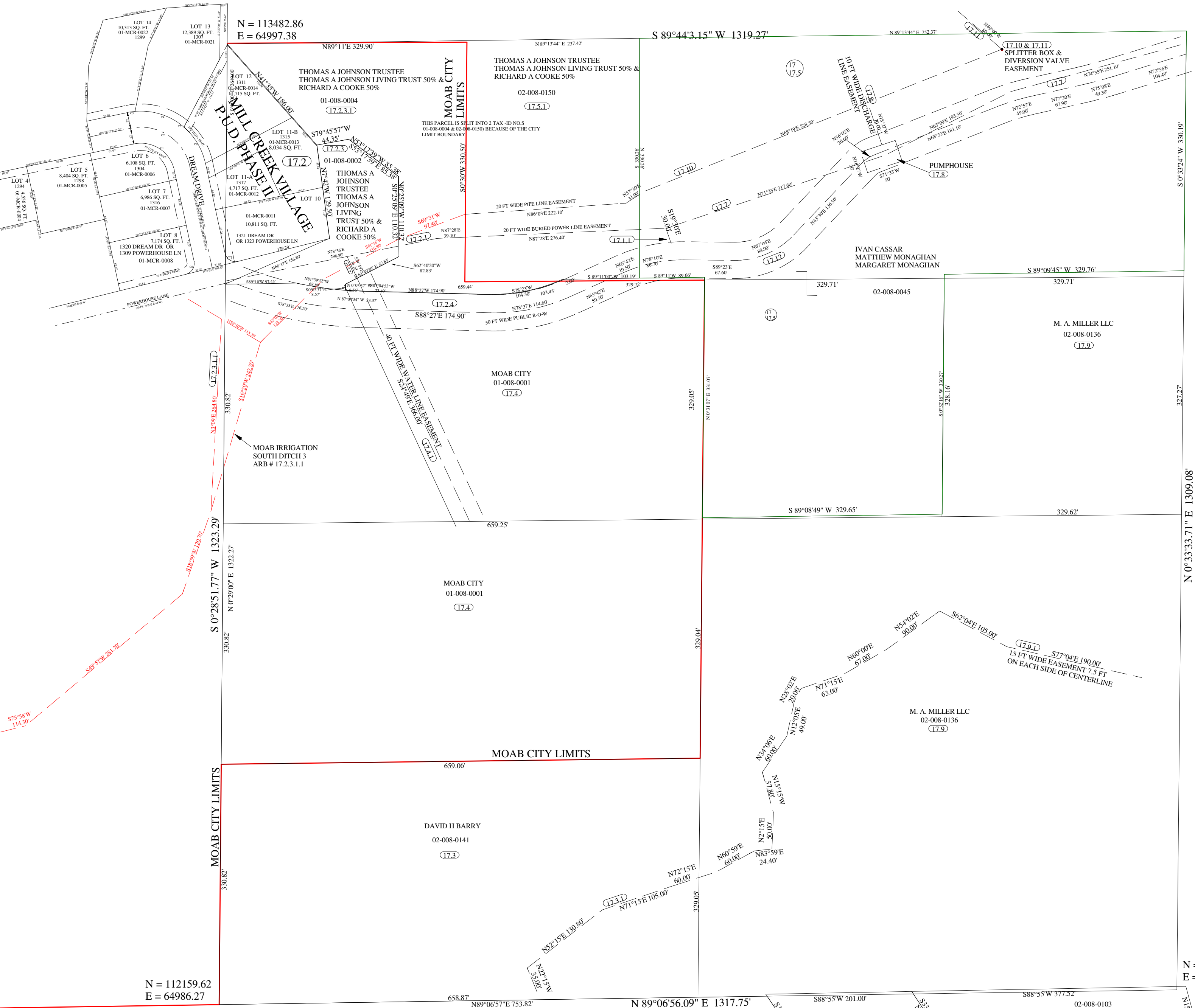
MOAB CITY LIMITS

MOAB CITY LIMITS

SW1/4NW1/4 SEC 8, T26S, R22E, SLB&M

SCALE: 1" = 100'

THIS PLAT IS MADE SOLELY FOR THE PURPOSE OF ASSISTING IN LOCATING THE LAND, AND THE RECORDER ASSUMES NO LIABILITY FOR VARIATIONS IF ANY, WITH AN ACTUAL SURVEY.



N = 113482.86
E = 64997.38

N = 112159.62
E = 64986.27

N = 112179.96
E = 66303.86

THE INFORMATION USED TO DRAW THIS PLAT IS FROM THE G.L.O. SURVEY PLATS, PRIVATE SURVEYS AND MYLAR PLATS LOCATED AT THE RECORDERS OFFICE

02-008-0059
20, 21
22 & 23

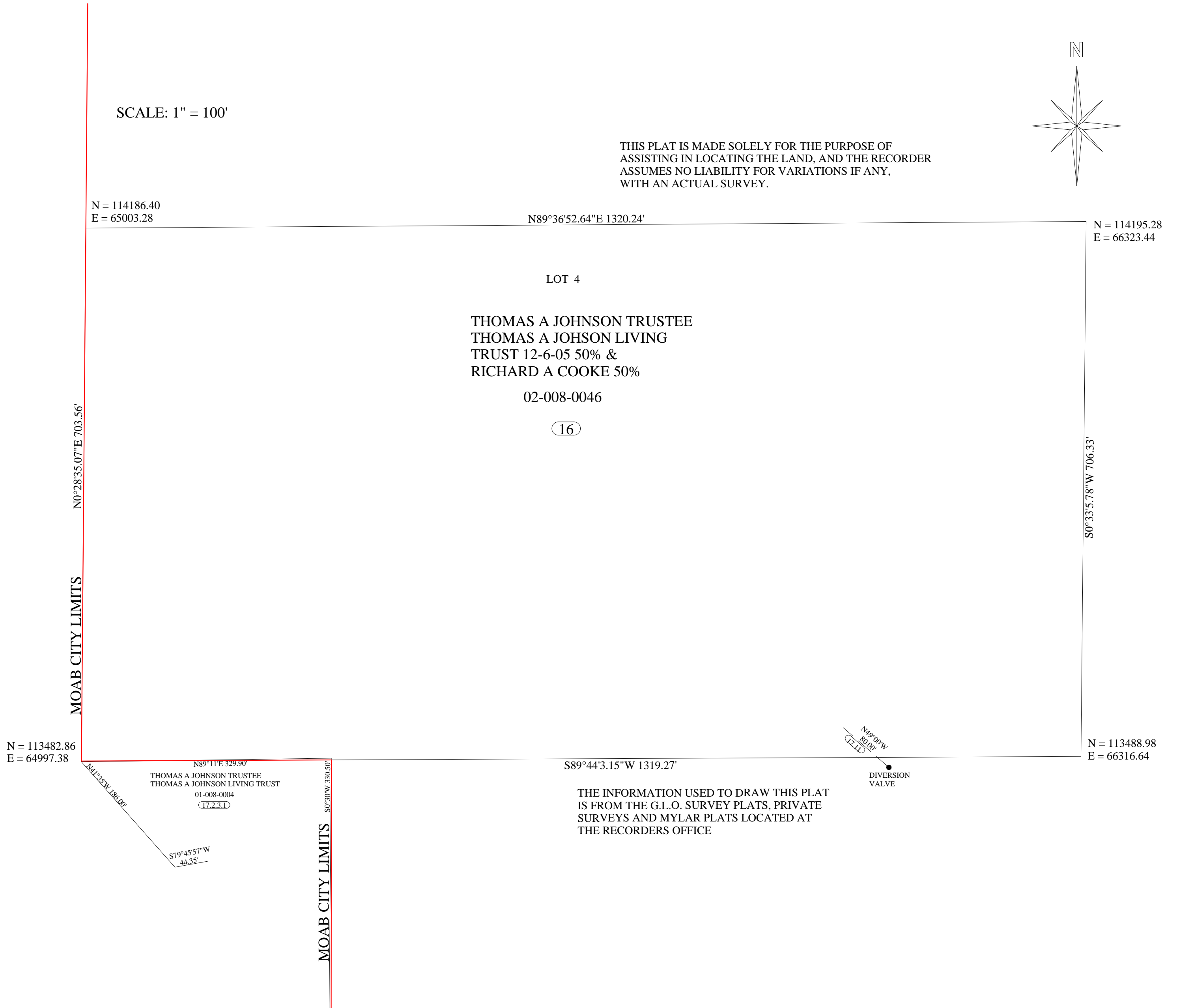
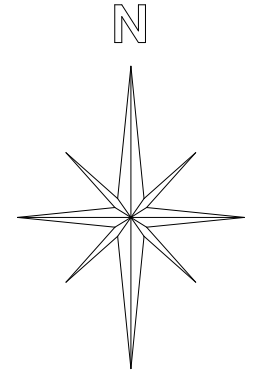
02-008-0051
19.5 &
63.12

02-008-0103
63.16

(NW1/4NW1/4) LOT 4 SECTION 8, T26S, R22E, SLB&M

SCALE: 1" = 100'

THIS PLAT IS MADE SOLELY FOR THE PURPOSE OF ASSISTING IN LOCATING THE LAND, AND THE RECORDER ASSUMES NO LIABILITY FOR VARIATIONS IF ANY, WITH AN ACTUAL SURVEY.



NE1/4SW1/4 SECTION 8 T26S R22E

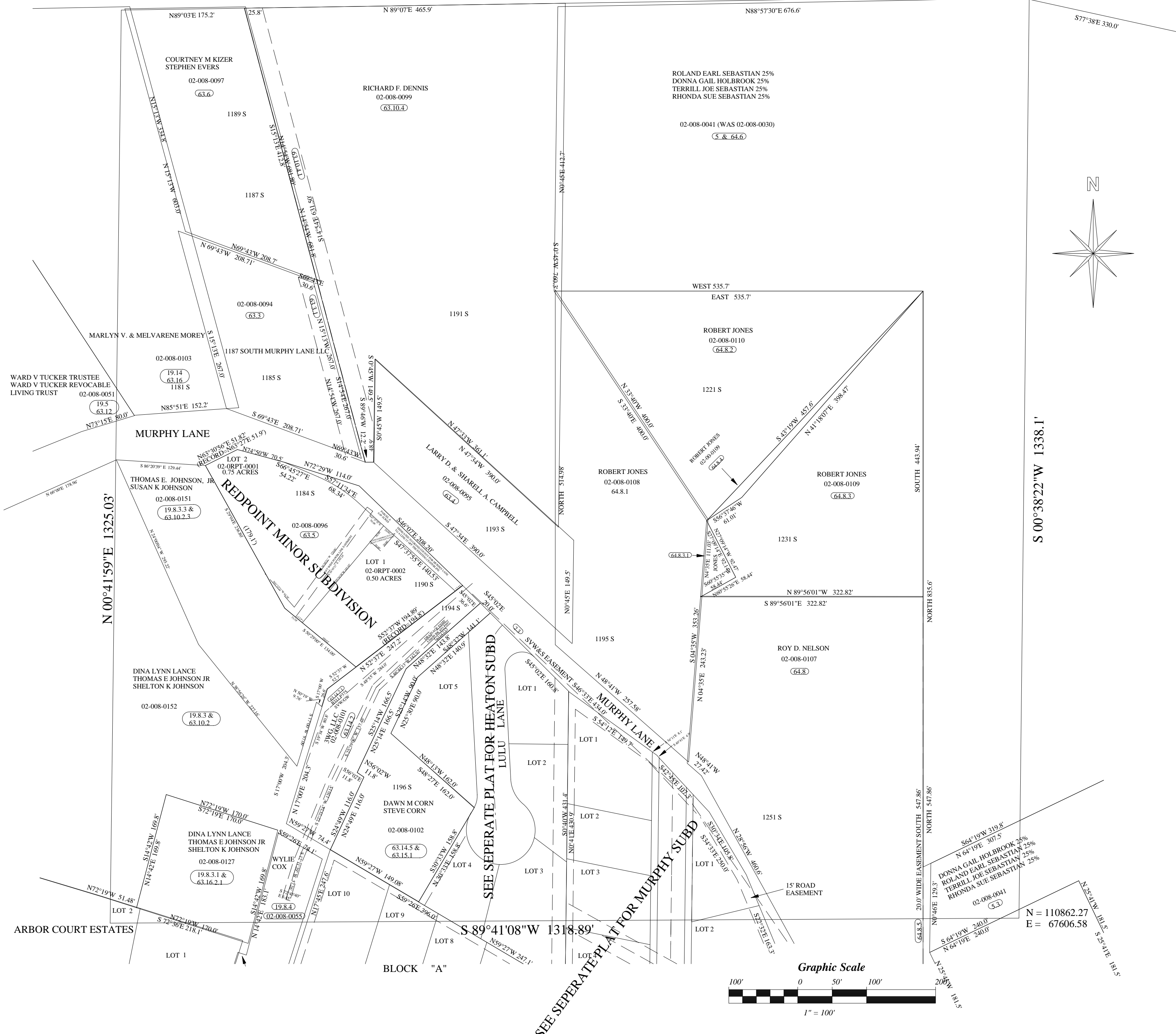
SALT LAKE BASE & MERIDIAN
GRAND COUNTY

THIS PLAT IS MADE SOLELY FOR THE
PURPOSE OF ASSISTING IN LOCATING
THE LAND, AND THE RECORDER ASSUMES
NO LIABILITY FOR VARIATIONS IF ANY,
WITH AN ACTUAL SURVEY.

N = 112179.96
E = 66303.89

N 89°06'58"E 1317.78'

N = 112200.29
E = 67621.51



NE1/4SW1/4 SECTION 8 T26S R22E

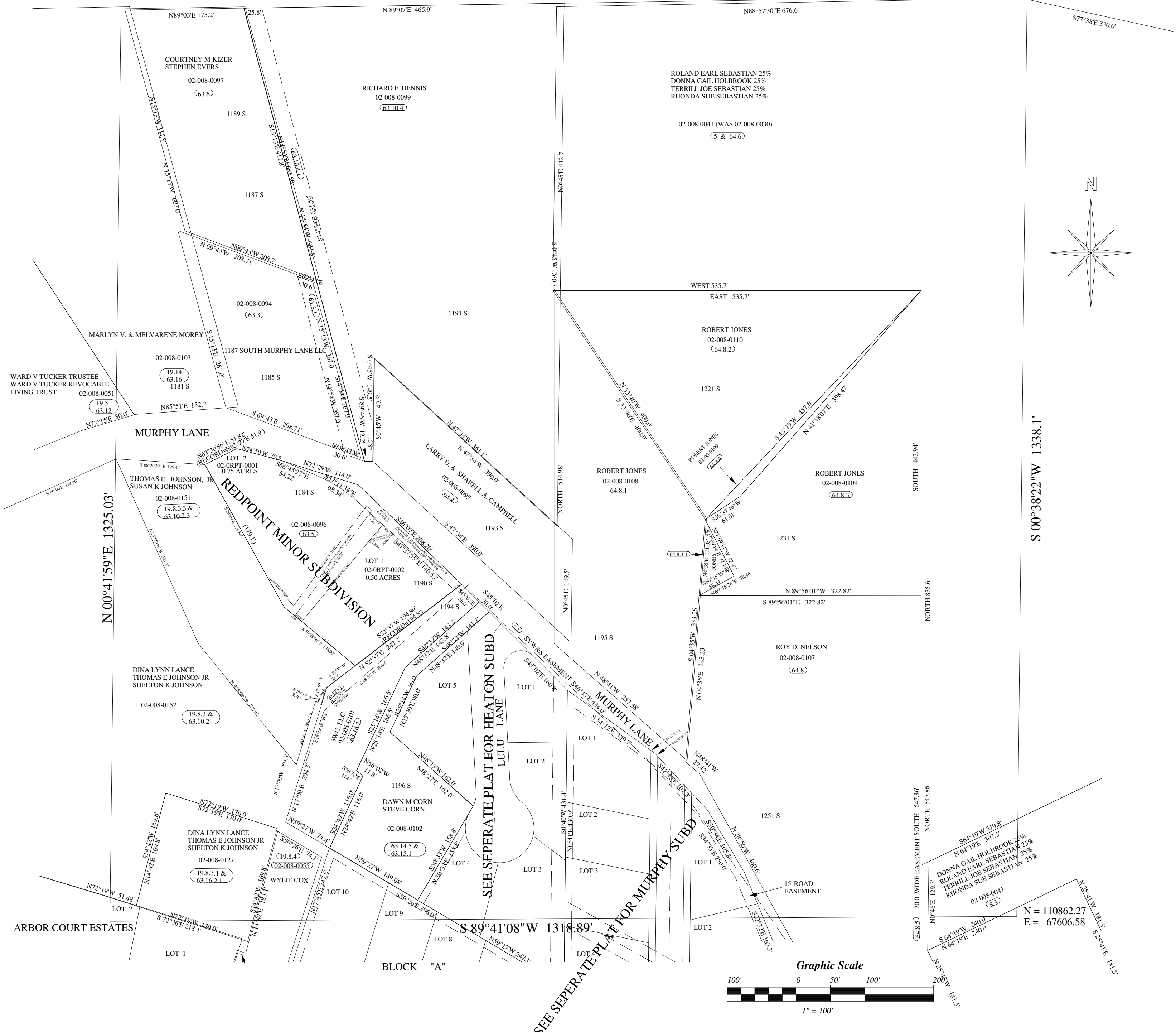
SALT LAKE BASE & MERIDIAN
GRAND COUNTY

THIS PLAT IS MADE SOLELY FOR THE
PURPOSE OF ASSISTING IN LOCATING
THE LAND, AND THE RECORDER ASSUMES
NO LIABILITY FOR VARIATIONS IF ANY,
WITH AN ACTUAL SURVEY.

N = 112179.96
E = 66303.89

N 89°06'58"E 1317.78'

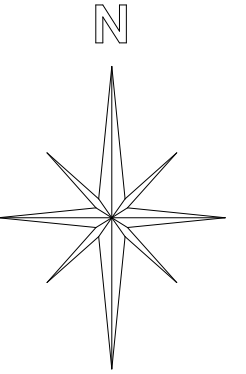
N = 112200.29
E = 67621.51



NW1/4SW1/4 SECTION 8 T26S R22E

SCALE 1" = 100'

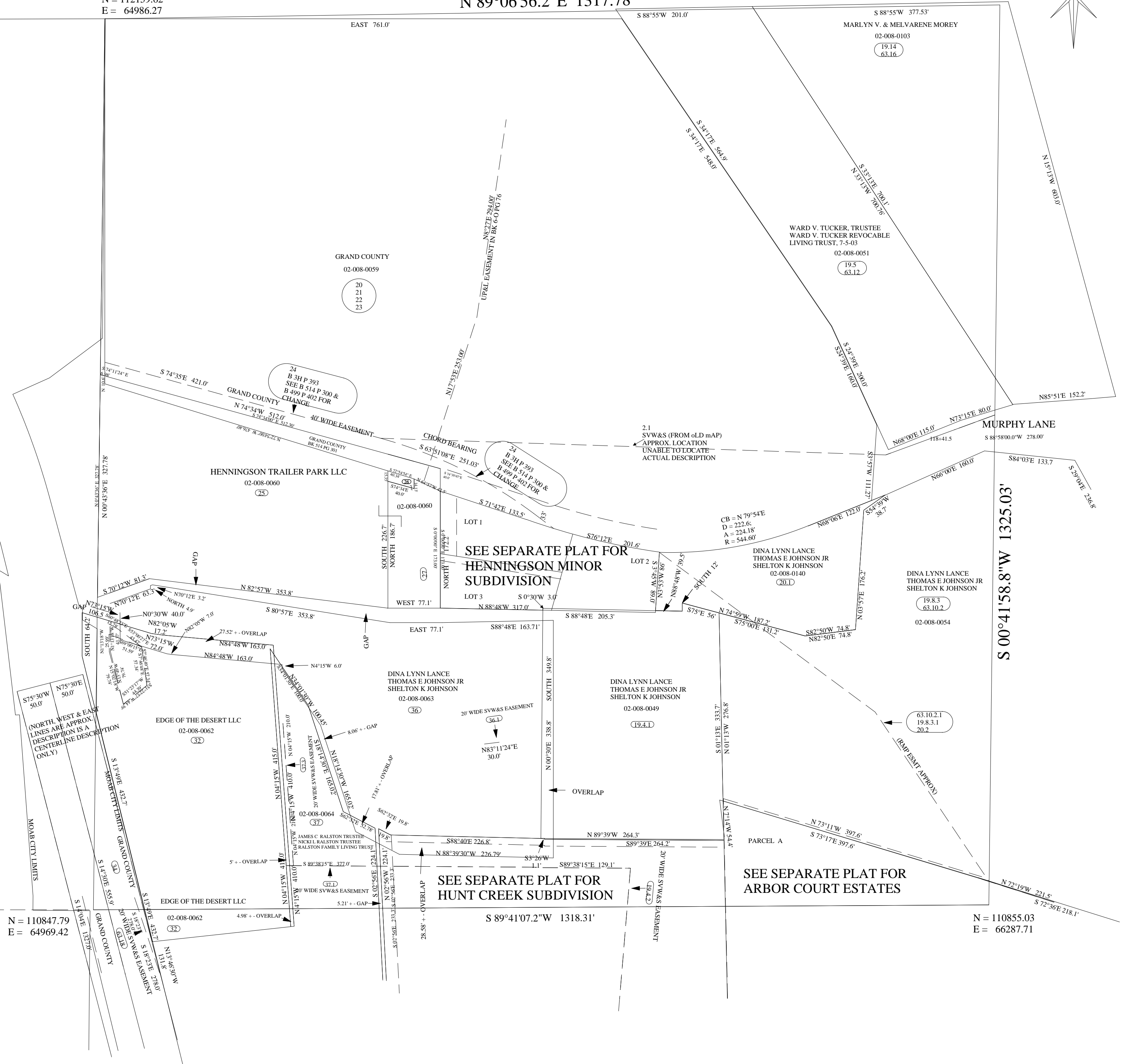
THIS PLAT IS DRAWN FROM THE PARCEL DESCRIPTIONS AND IS SOLELY FOR THE PURPOSE OF ASSISTING IN LOCATING THE LAND. THE RECORDER'S OFFICE ASSUMES NO LIABILITY FOR VARIATIONS IF ANY, WITH AN ON SITE SURVEY.



N = 112159.62
E = 64986.27

N 89°06'56.2"E 1317.78'

N = 112179.96
E = 66303.89



N = 110847.79
E = 64969.42

S 89°41'07.2"W 1318.31'

N = 110855.03
E = 66287.71

SW1/4 SW1/4 OF SECTION 8, T26S, R22E

THIS PLAT IS MADE SOLELY FOR THE PURPOSE OF ASSISTING IN LOCATING THE LAND, AND THE RECORDER ASSUMES NO LIABILITY FOR VARIATIONS IF ANY, WITH AN ACTUAL SURVEY.

N = 110847.79
E = 64969.42

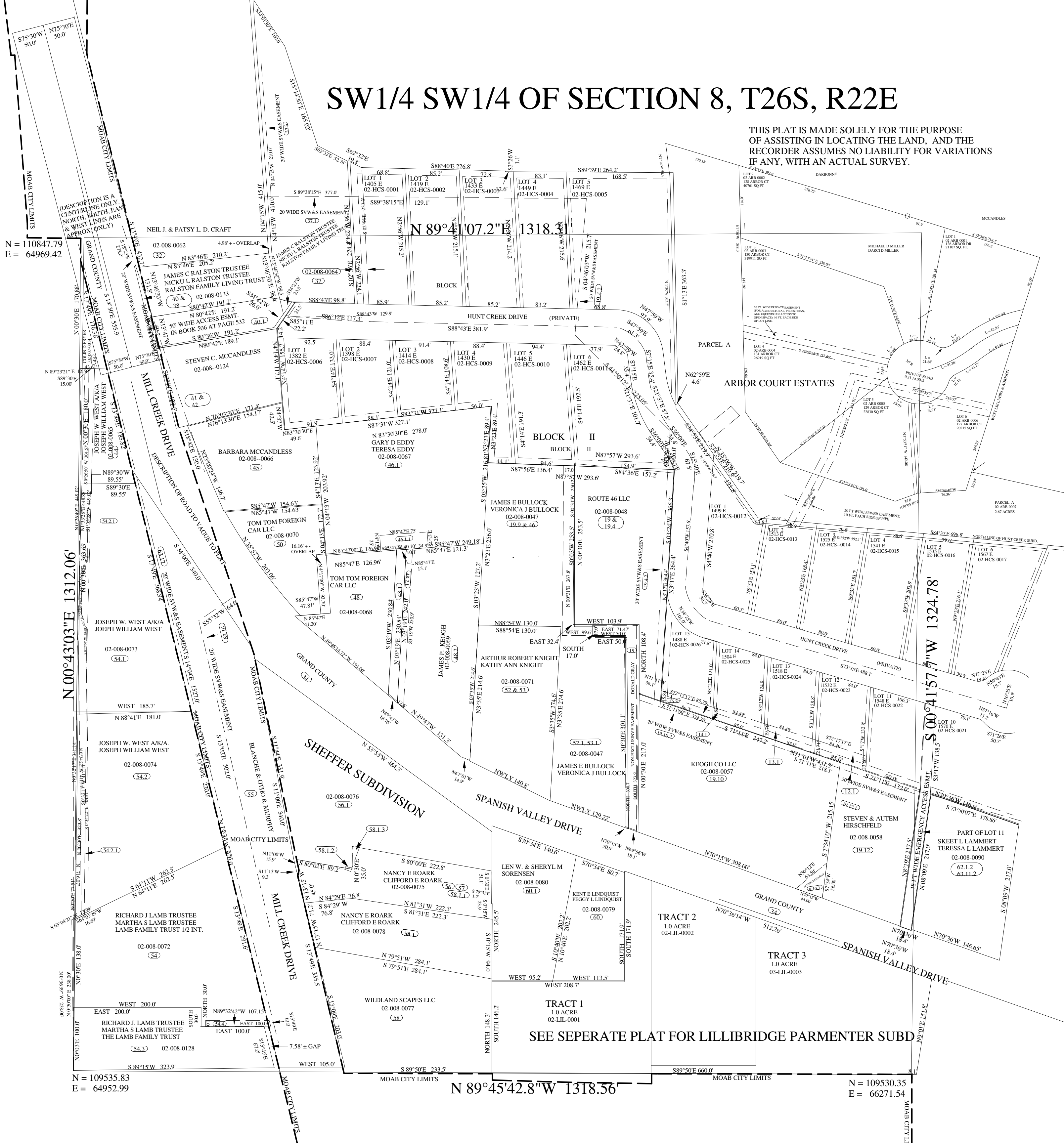
N 00°43'03"E 1312.06'

S 00°41'57.7"W 1324.78'

N = 109535.83
E = 64952.99

N 89°45'42.8"W 1318.56'

N = 109530.35
E = 66271.54



NE1/4SW1/4 SECTION 8 T26S R22E

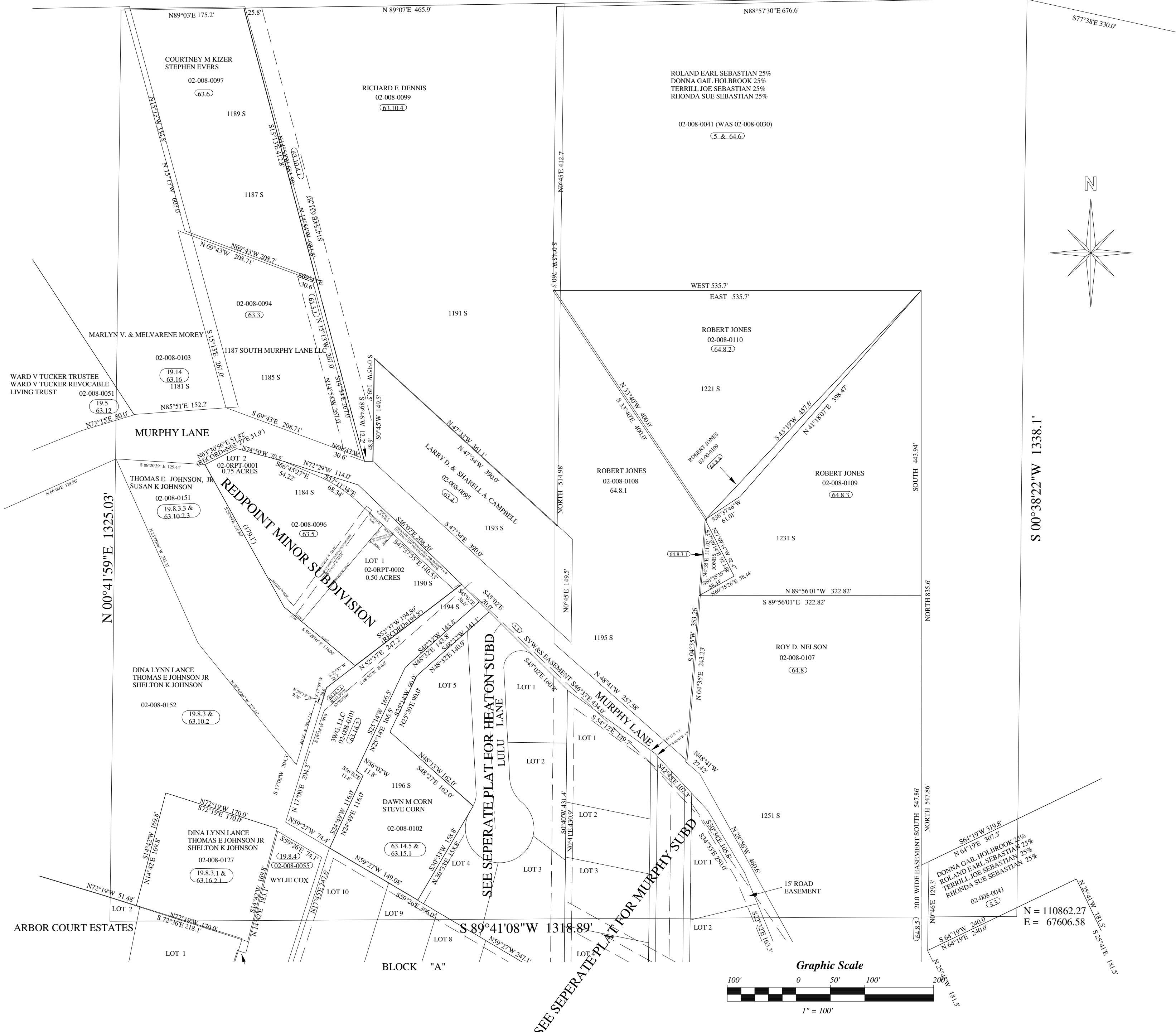
SALT LAKE BASE & MERIDIAN
GRAND COUNTY

THIS PLAT IS MADE SOLELY FOR THE
PURPOSE OF ASSISTING IN LOCATING
THE LAND, AND THE RECORDER ASSUMES
NO LIABILITY FOR VARIATIONS IF ANY,
WITH AN ACTUAL SURVEY.

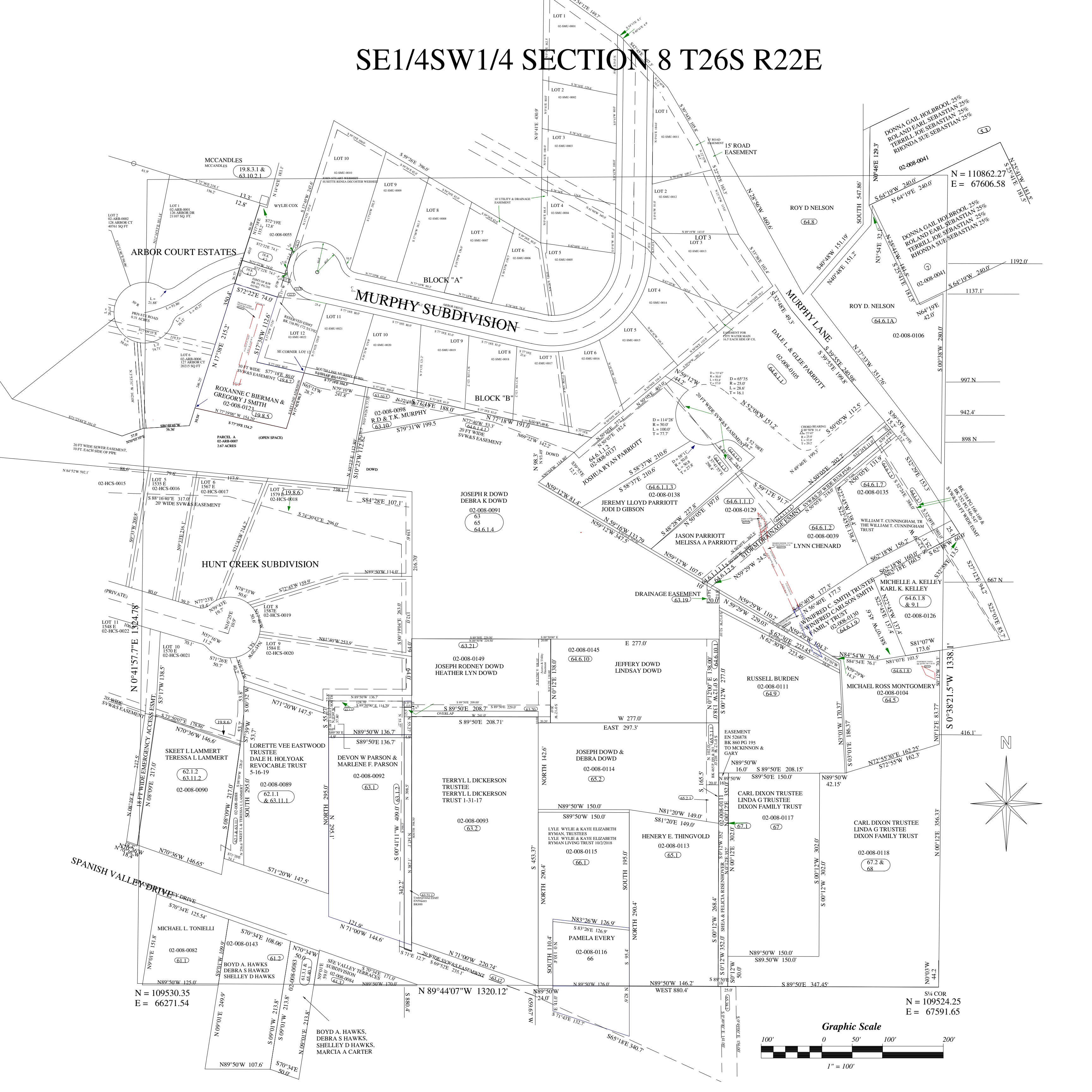
N = 112179.96
E = 66303.89

N 89°06'58"E 1317.78'

N = 112200.29
E = 67621.51



SE1/4SW1/4 SECTION 8 T26S R22E

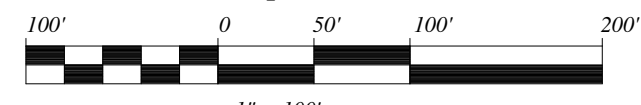


N = 109530.35
E = 66271.54

N 89°44'07" W 1320.12'

S¼ COR
N = 109524.25
E = 67591.65

Graphic Scale



BOYD A. HAWKS,
DEBRA S HAWKS,
SHELLEY D HAWKS,
MARCIA A CARTER

SE1/4 SECTION 8 T26S R22E



N = 112240.67
E = 70238.20

N = 110921.35
E = 70235.23

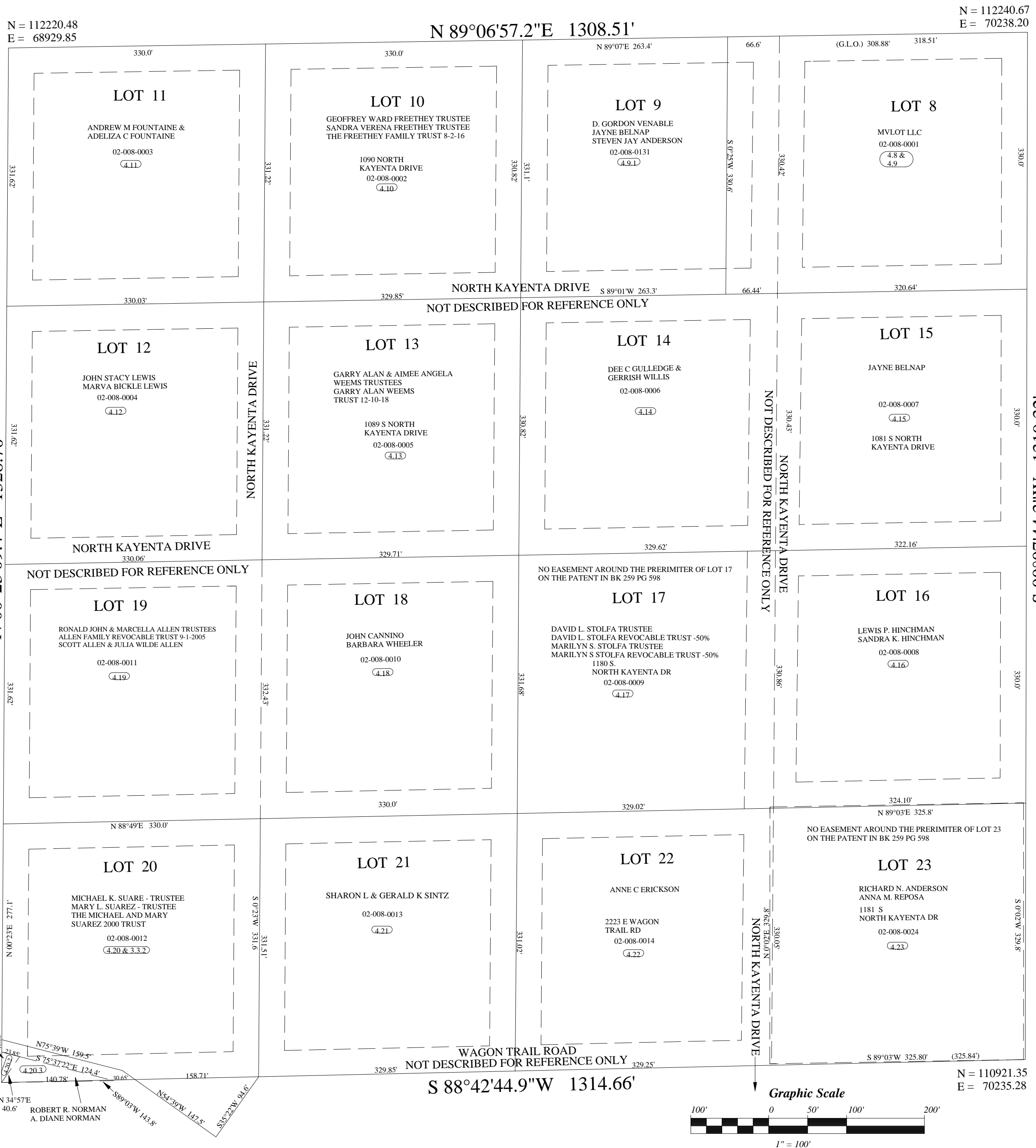
N = 109602.02
E = 70232.25

LOT 6 (NE1/4SE1/4) SECTION 8 T26S R22E

SALT LAKE BASE & MERIDIAN
GRAND COUNTY

SCALE = 100 FT

THIS PLAT IS MADE SOLELY FOR THE
PURPOSE OF ASSISTING IN LOCATING
THE LAND, AND THE RECORDER ASSUMES
NO LIABILITY FOR VARIATIONS IF ANY,
WITH AN ACTUAL SURVEY.



NW1/4SE1/4 SECTION 8 T26S R22E

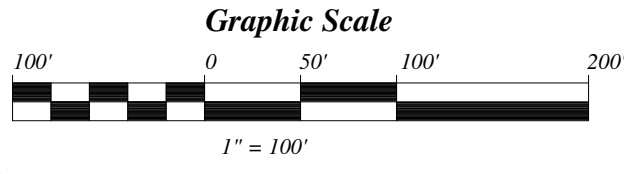
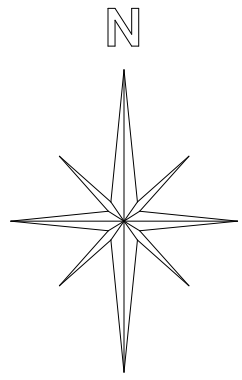
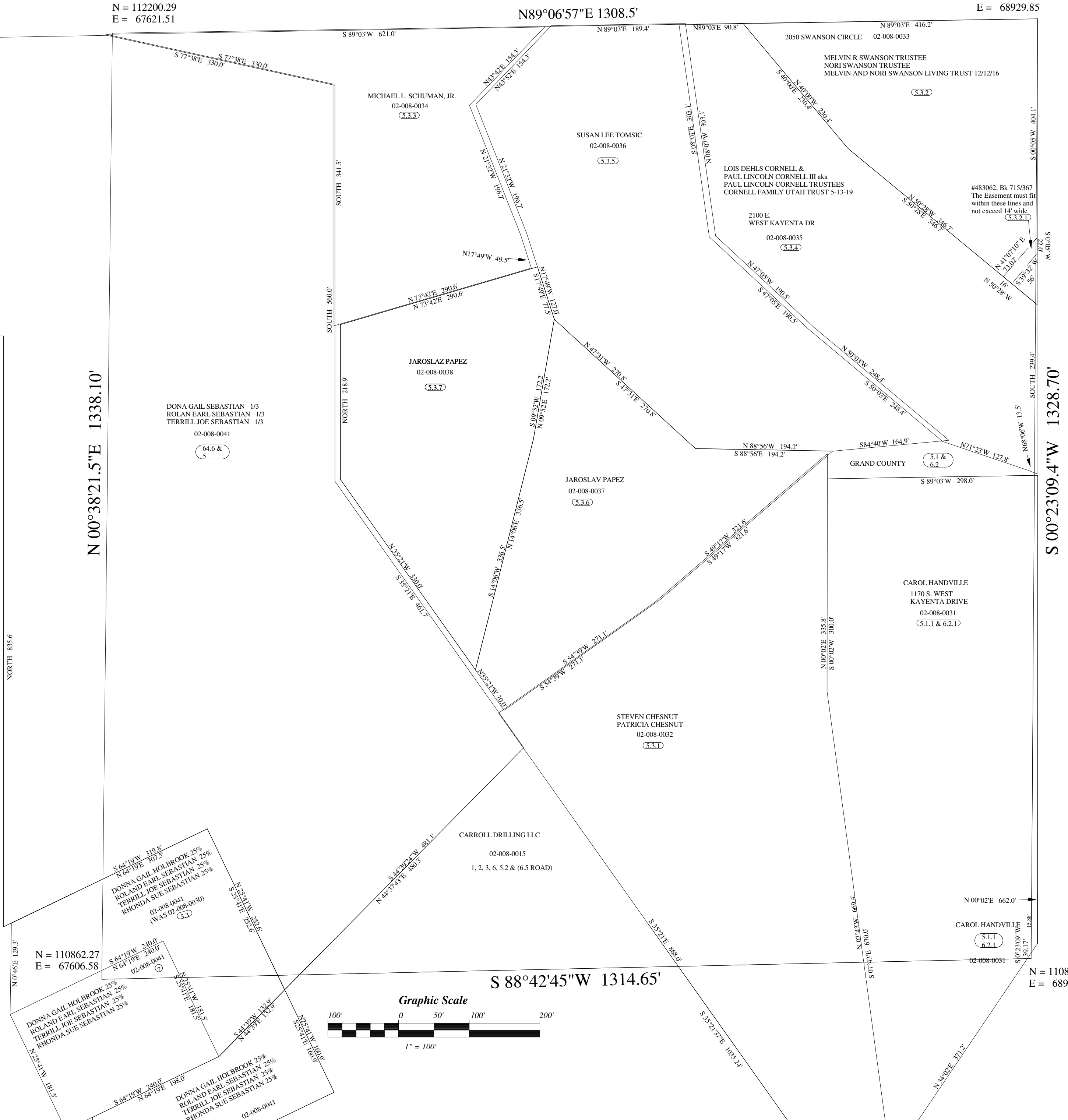
SALT LAKE BASE & MERIDIAN
GRAND COUNTY

SCALE: 1" = 100'

THIS PLAT IS MADE SOLELY FOR THE
PURPOSE OF ASSISTING IN LOCATING
THE LAND, AND THE RECORDER ASSUMES
NO LIABILITY FOR VARIATIONS IF ANY,
WITH AN ACTUAL SURVEY.

N = 112200.29
E = 67621.51

N = 112220.48
E = 68929.85



N = 110862.27
E = 67606.58

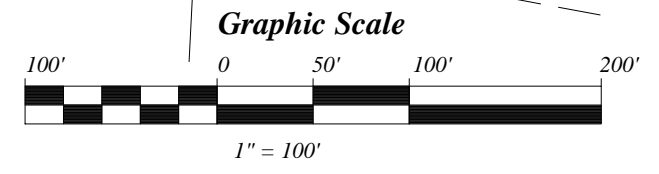
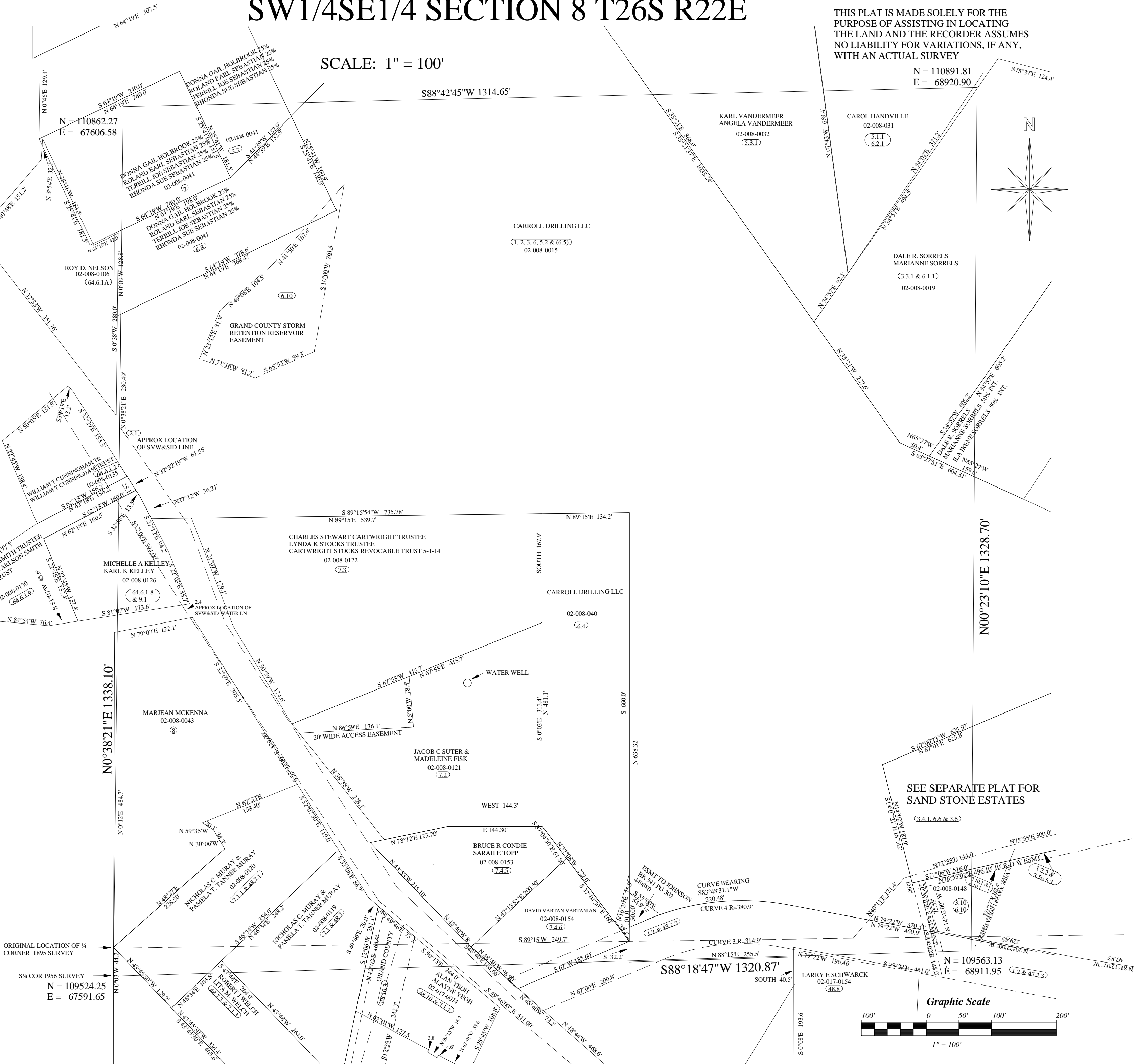
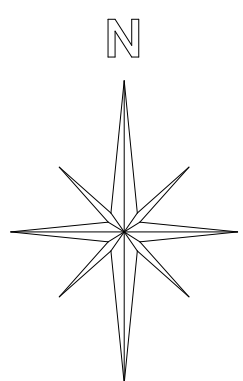
N = 110891.81
E = 68920.90

SW1/4SE1/4 SECTION 8 T26S R22E

SCALE: 1" = 100'

THIS PLAT IS MADE SOLELY FOR THE PURPOSE OF ASSISTING IN LOCATING THE LAND AND THE RECORDER ASSUMES NO LIABILITY FOR VARIATIONS, IF ANY, WITH AN ACTUAL SURVEY

N = 110891.81
E = 68920.90

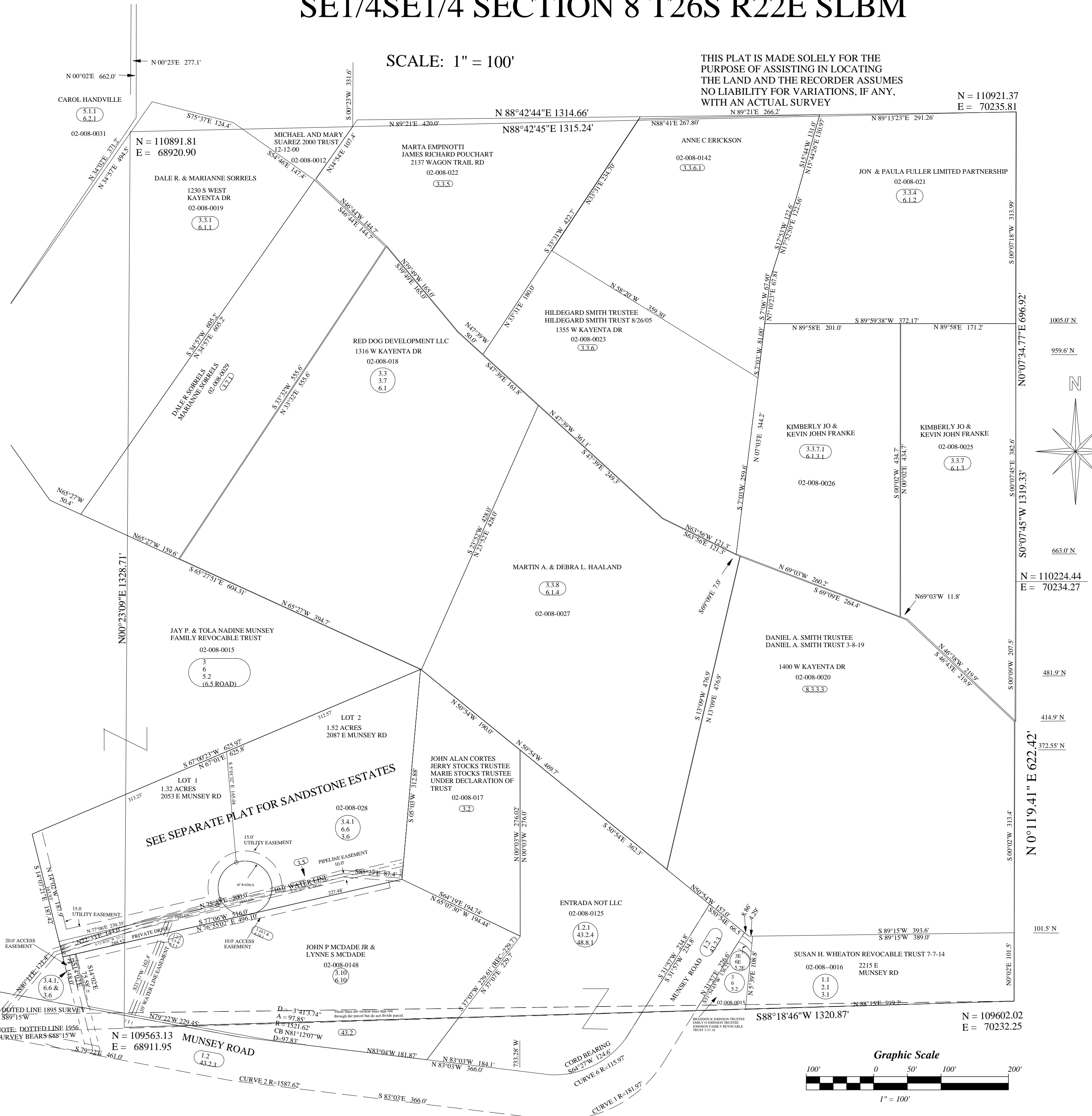


SE1/4SE1/4 SECTION 8 T26S R22E SLBM

SCALE: 1" = 100'

THIS PLAT IS MADE SOLELY FOR THE PURPOSE OF ASSISTING IN LOCATING THE LAND AND THE RECORDER ASSUMES NO LIABILITY FOR VARIATIONS, IF ANY, WITH AN ACTUAL SURVEY

N = 110921.37
E = 70235.81



SEE SEPARATE PLAT FOR SANDSTONE ESTATES

NOTE: DOTTED LINE 1895 SURVEY BEARS S89°15'W

NOTE: DOTTED LINE 1956 SURVEY BEARS S88°15'W

N = 109563.13
E = 68911.95

N = 109602.02
E = 70232.25

