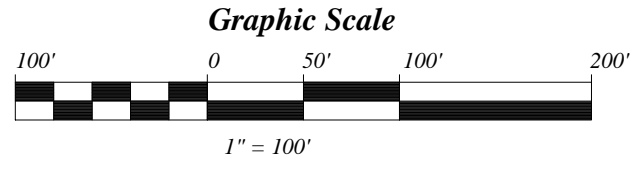
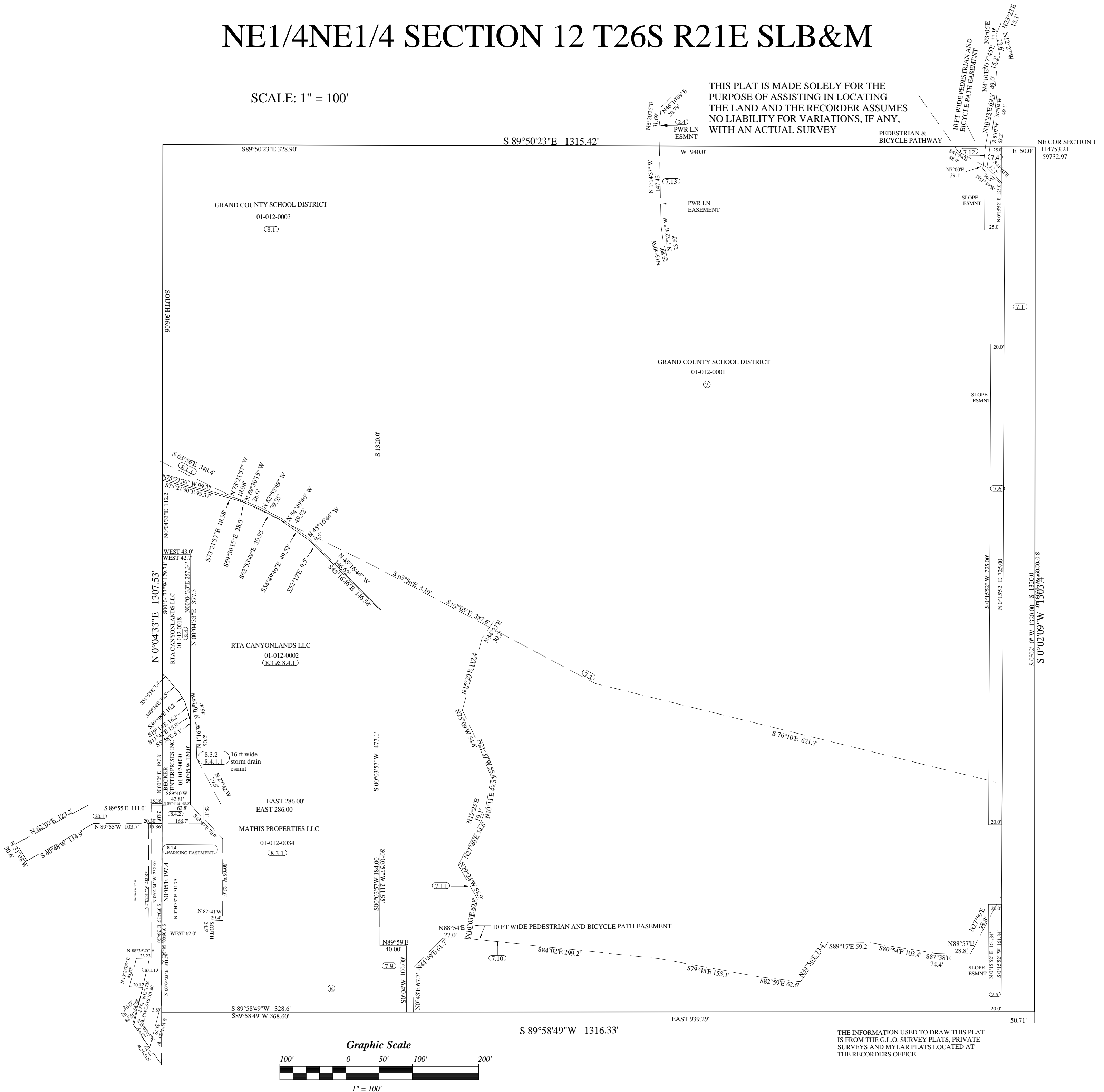


NE1/4NE1/4 SECTION 12 T26S R21E SLB&M

SCALE: 1" = 100'

THIS PLAT IS MADE SOLELY FOR THE PURPOSE OF ASSISTING IN LOCATING THE LAND AND THE RECORDER ASSUMES NO LIABILITY FOR VARIATIONS, IF ANY, WITH AN ACTUAL SURVEY



THE INFORMATION USED TO DRAW THIS PLAT IS FROM THE G.L.O. SURVEY PLATS, PRIVATE SURVEYS AND MYLAR PLATS LOCATED AT THE RECORDERS OFFICE

NW1/4NE1/4 SECTION 12 T26S R21E

SCALE: 1" = 100'

RTA CANYONLANDS LLC

THIS PLAT IS MADE SOLELY FOR THE PURPOSE OF ASSISTING IN LOCATING THE LAND AND THE RECORDER ASSUMES NO LIABILITY FOR VARIATIONS, IF ANY, WITH AN ACTUAL SURVEY

NORTH 1/4 COR SECTION 12
T26S R21E
114760.60
57102.10

114756.90
58417.60

HUNTRIDGE APARTMENTS OF MOAB LLC
01-001-0188
(13)

MORGE DEL MORAL MARLENE LEE
01-001-0028
(12.2)

COLIN DON FRYER
01-001-0024
(11.1)

RTA CANYONLANDS LLC
01-012-0009
(9.9.2.1.10.1.1)

BIRCH AVENUE

BLOCK "R"

BLOCK "R"

KANE CREEK BLVD

MOUNTAINVIEW SUBDIVISION

BLOCK "A"

U.S. HIGHWAY 191 (FORMERLY HWY 160)

HUNTRIDGE DRIVE

CEDAR AVENUE

BLOCK "S"

C-DOGWOOD AVE

BLOCK "T"

BECKER ENTERPRISES AND CONSTRUCTION CO INC
01-012-0007
(10)

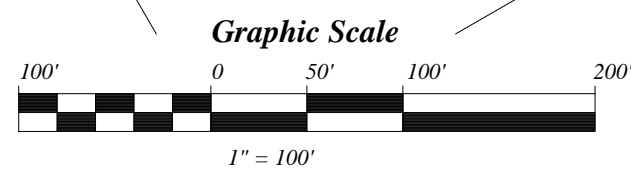
VENTURE MANAGEMENT LLC
01-012-0016
(10.2)

PARKING EASEMENT
(8.4.4)

113448.90
57099.50

113449.40
58415.80

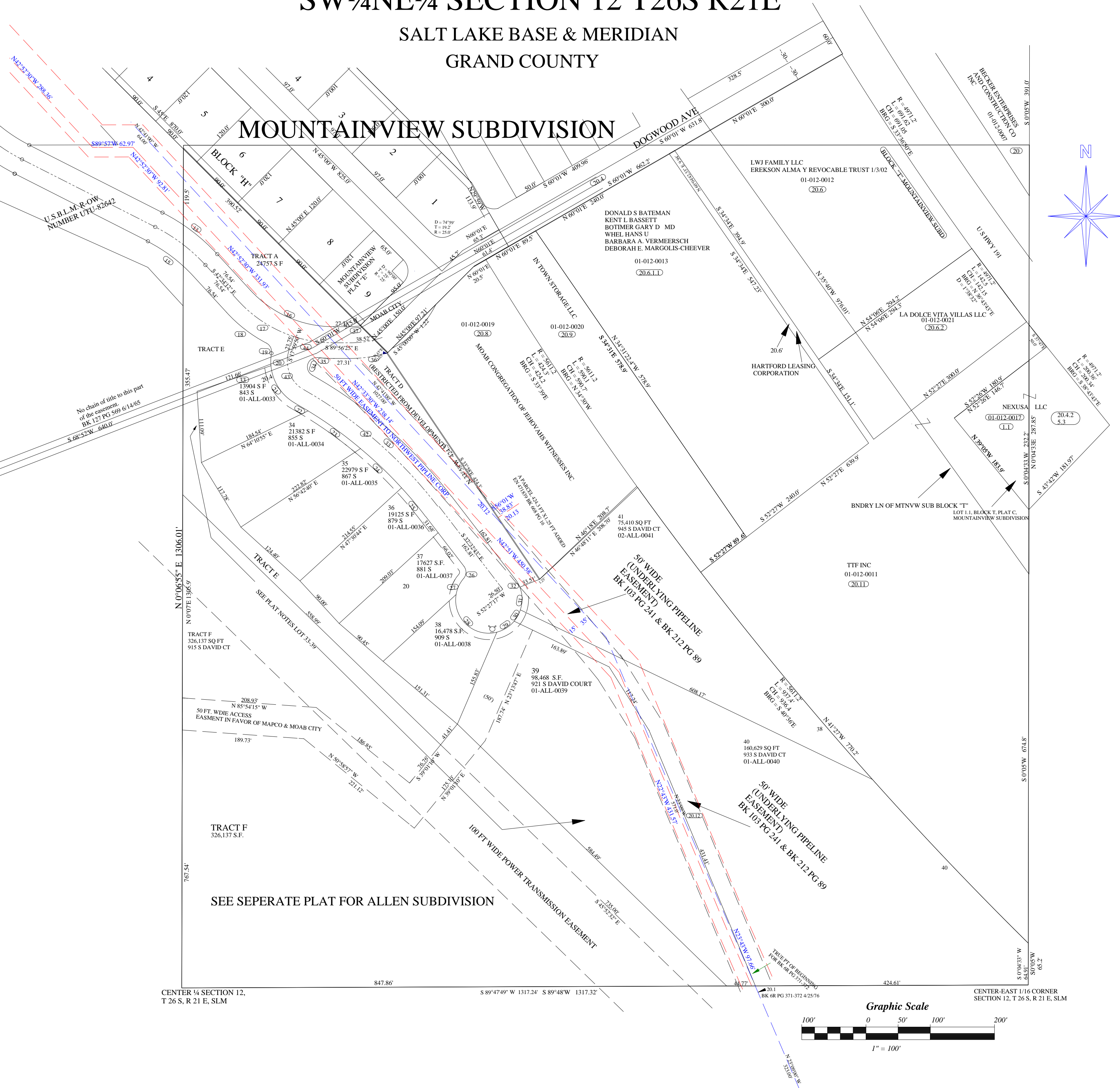
THE INFORMATION USED TO DRAW THIS PLAT IS FROM THE G.L.O. SURVEY PLATS, PRIVATE SURVEYS AND MYLAR PLATS LOCATED AT THE RECORDERS OFFICE



SW¹/₄NE¹/₄ SECTION 12 T26S R21E

SALT LAKE BASE & MERIDIAN
GRAND COUNTY

MOUNTAINVIEW SUBDIVISION

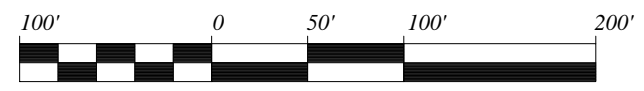


CENTER ¹/₄ SECTION 12,
T 26 S, R 21 E, SLM

S 89°47'49" W 1317.24' S 89°48' W 1317.32'

CENTER-EAST 1/16 CORNER
SECTION 12, T 26 S, R 21 E, SLM

Graphic Scale

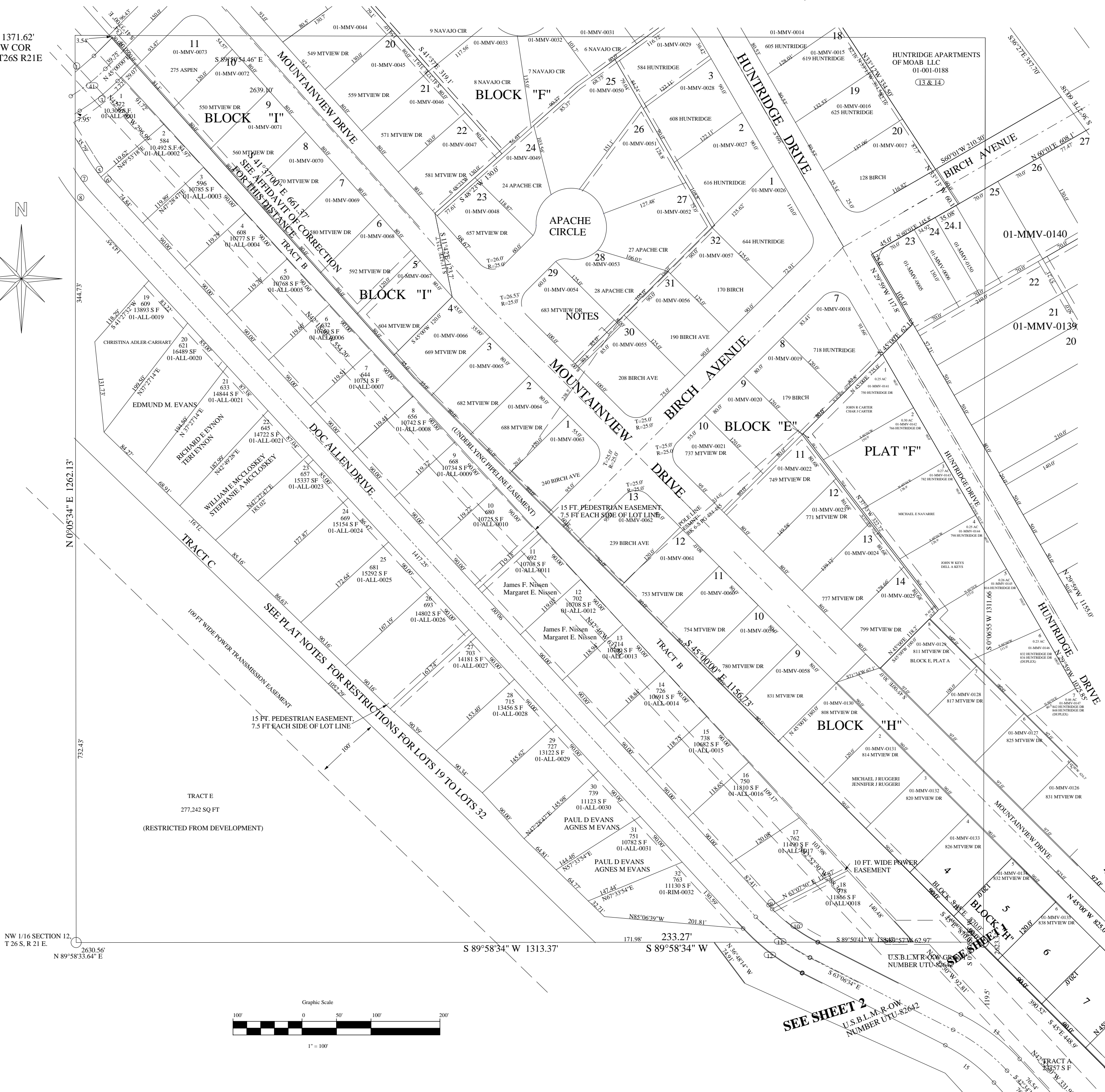
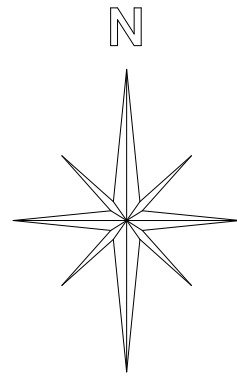


1" = 100'

NE1/4NW1/4 SECTION 12 T26S R21E

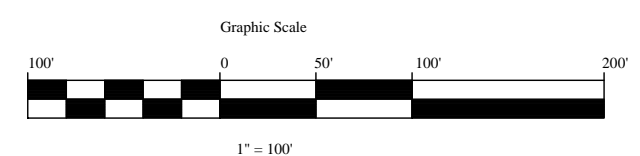
THIS PLAT IS DRAWN FROM THE PARCEL DESCRIPTIONS AND IS SOLELY FOR THE PURPOSE OF LOCATING THE LAND.
THE RECORDER'S OFFICE ASSUMES NO LIABILITY FOR VARIATIONS IF ANY, WITH AN ON SITE SURVEY.

S 89°50'54" E 1371.62'
FROM THE NW COR
SECTION 12 T26S R21E



NW 1/16 SECTION 12,
T 26 S, R 21 E.
2630.56'
N 89°58'33.64" E

S 89°58'34" W 1313.37'
S 89°58'34" W

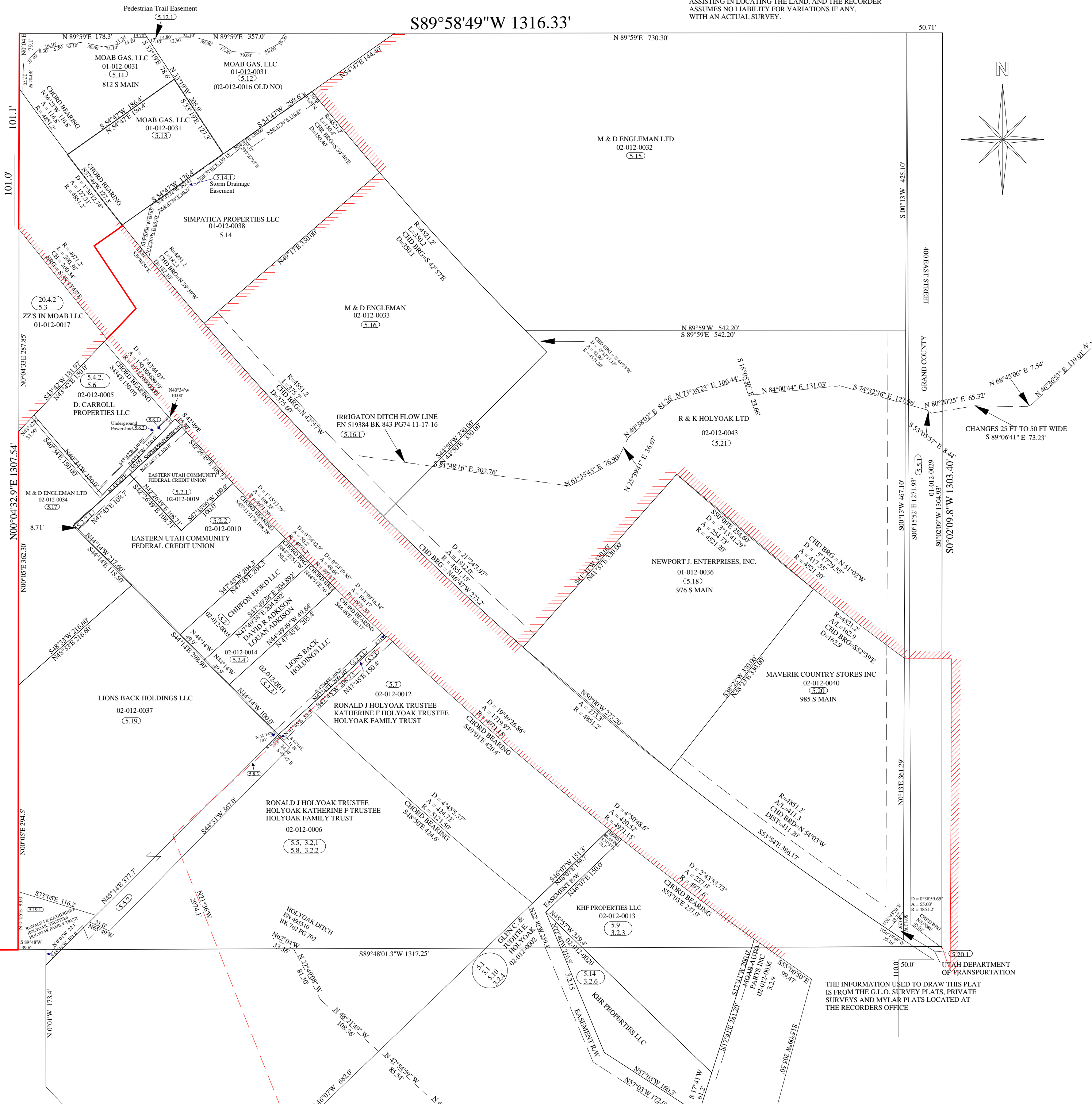
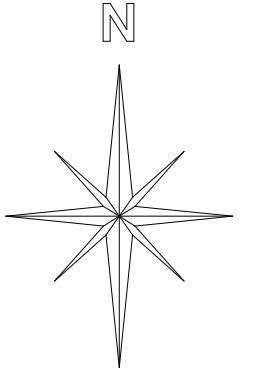


SEE SHEET 2
U.S.B.L.M.R.-OW
NUMBER UTU-82642

SE¹/₄NE¹/₄ SECTION 12 T26S R21E

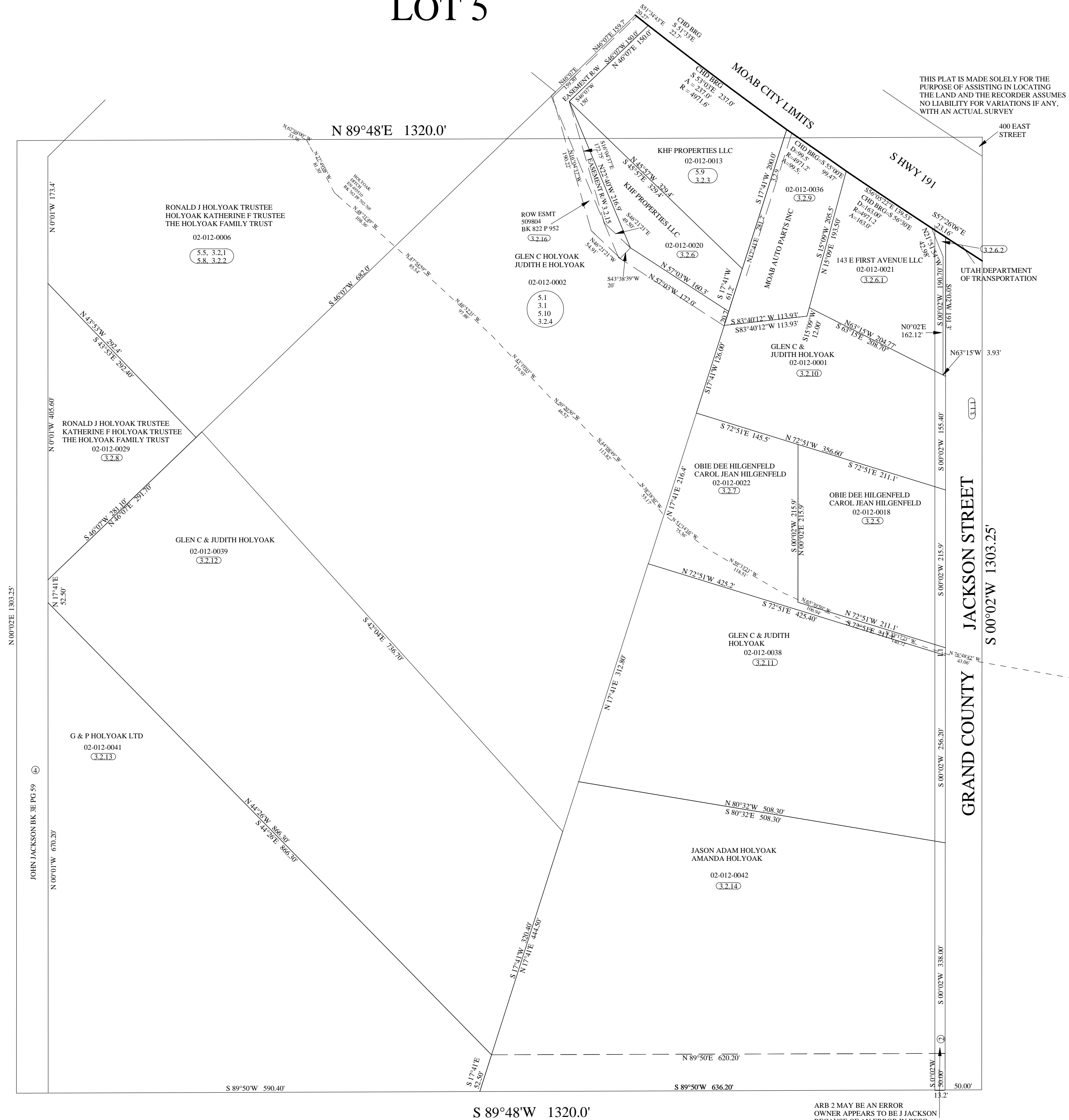
SCALE: 1" = 100'

THIS PLAT IS MADE SOLELY FOR THE PURPOSE OF ASSISTING IN LOCATING THE LAND, AND THE RECORDER ASSUMES NO LIABILITY FOR VARIATIONS IF ANY, WITH AN ACTUAL SURVEY.



THE INFORMATION USED TO DRAW THIS PLAT IS FROM THE G.L.O. SURVEY PLATS, PRIVATE SURVEYS AND MYLAR PLATS LOCATED AT THE RECORDERS OFFICE

NE 1/4 SE 1/4 SECTION 12 T 26 S R 21 E SLM LOT 5



THIS PLAT IS MADE SOLELY FOR THE PURPOSE OF ASSISTING IN LOCATING THE LAND AND THE RECORDER ASSUMES NO LIABILITY FOR VARIATIONS IF ANY, WITH AN ACTUAL SURVEY

ARB 2 MAY BE AN ERROR
OWNER APPEARS TO BE J JACKSON
BECAUSE OF AN ERROR IN DESC
BK 3-E PG 581.
A W D BK 346 PG 258(S. JACKSON TO MCGINTY)
ALSO APPEARS TO BE IN ERROR- NO CHAIN TO S JACKSON