

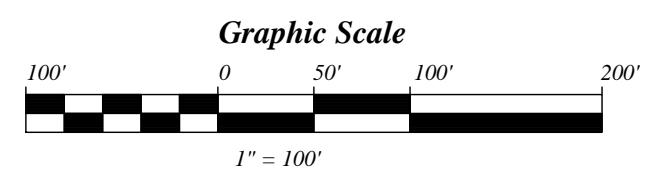
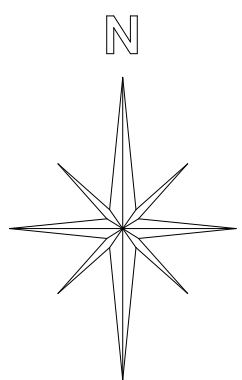
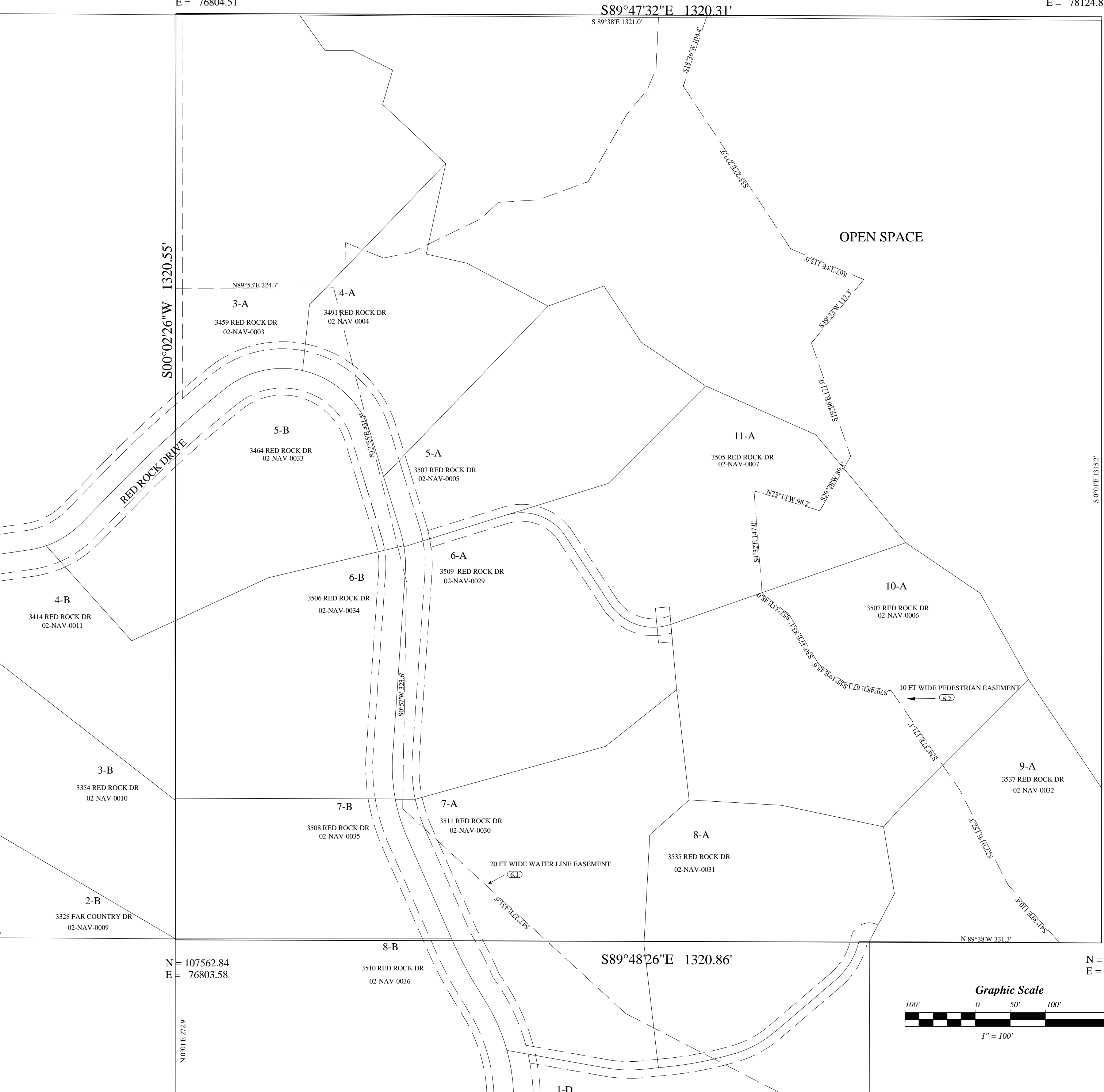
# NE1/4NE1/4 SECTION 15 T26S R22E SLB&M

THIS PLAT IS DRAWN FROM THE PARCEL DESCRIPTIONS  
AND IS SOLELY FOR THE PURPOSE OF ASSISTING IN LOCATING  
THE LAND.  
THE RECORDER'S OFFICE ASSUMES NO LIABILITY  
FOR VARIATIONS IF ANY, WITH AN ON SITE SURVEY.

SCALE: 1" = 100'

N = 108883.39  
E = 76804.51

N = 108878.60  
E = 78124.81



S00°02'26"W 1320.55'

S00°01'00"W 1320.20'

N = 107562.84  
E = 76803.58

N = 107558.40  
E = 78124.43

N 0°01'E 272.9'

S89°47'32"E 1320.31'  
S 89°38'E 1321.0'

S89°48'26"E 1320.86'

1-D

# NW1/4NE1/4 SECTION 15 T26S R22E SLB&M

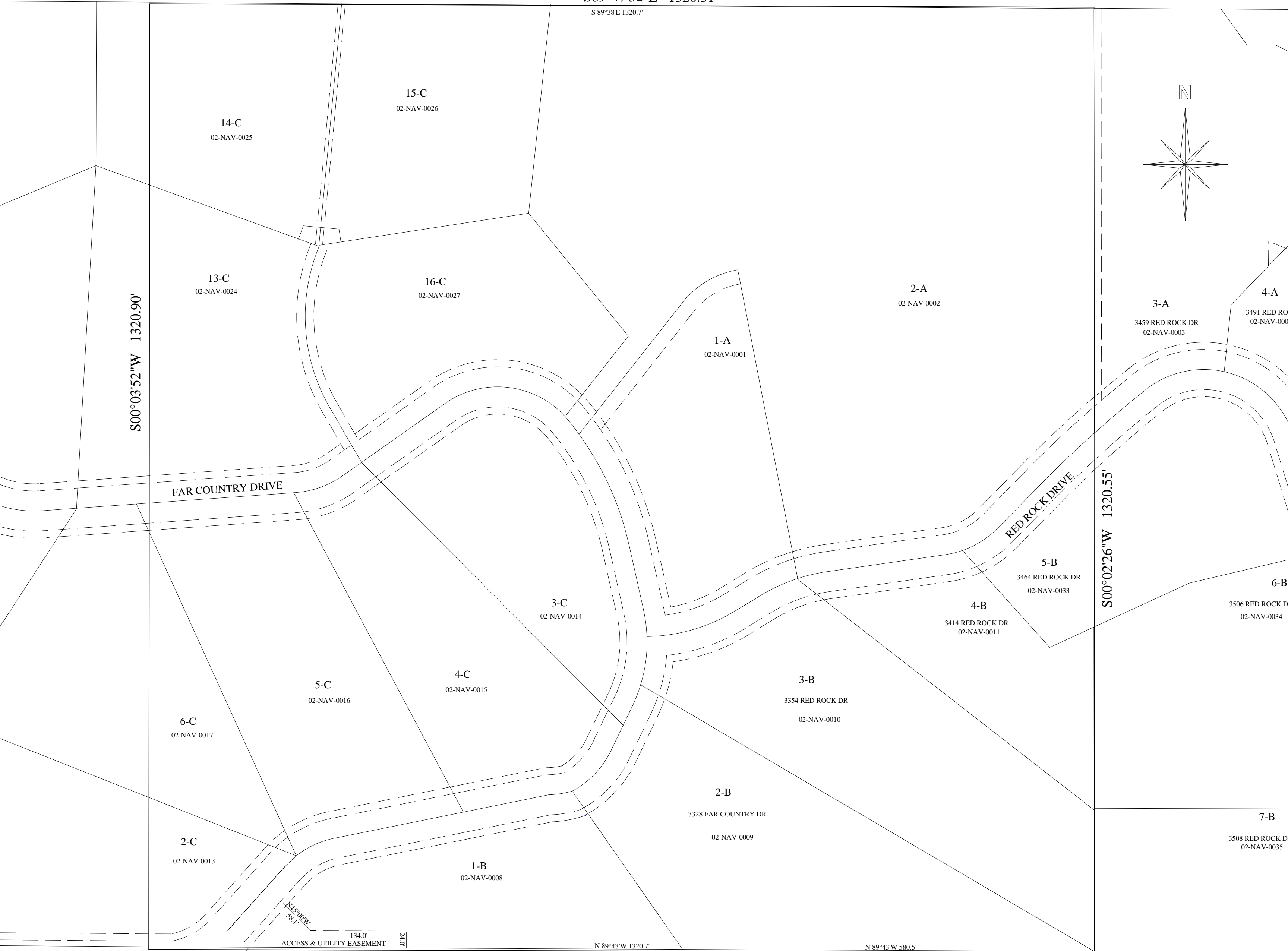
SCALE: 1" = 100'

THIS PLAT IS DRAWN FROM THE PARCEL DESCRIPTIONS AND IS SOLELY FOR THE PURPOSE OF ASSISTING IN LOCATING THE LAND. THE RECORDER'S OFFICE ASSUMES NO LIABILITY FOR VARIATIONS IF ANY, WITH AN ON SITE SURVEY.

N = 108888.18  
E = 75484.21

S89°47'32"E 1320.31'

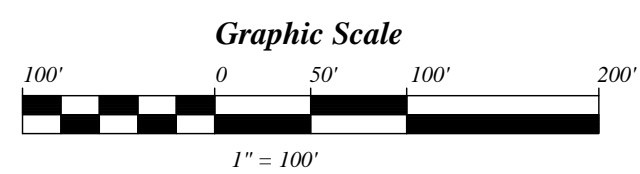
N = 108883.39  
E = 76804.51



N = 107567.29  
E = 75482.73

S89°48'26"E 1320.86'

N = 107562.84  
E = 76803.58



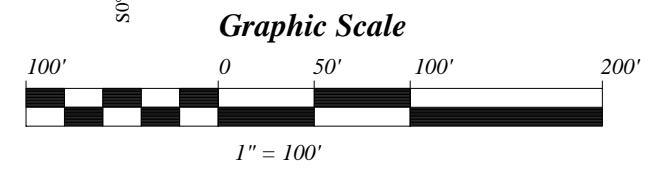
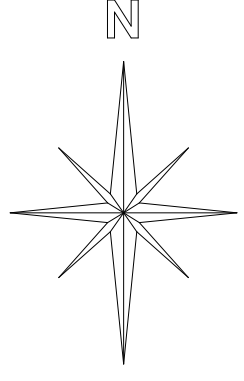
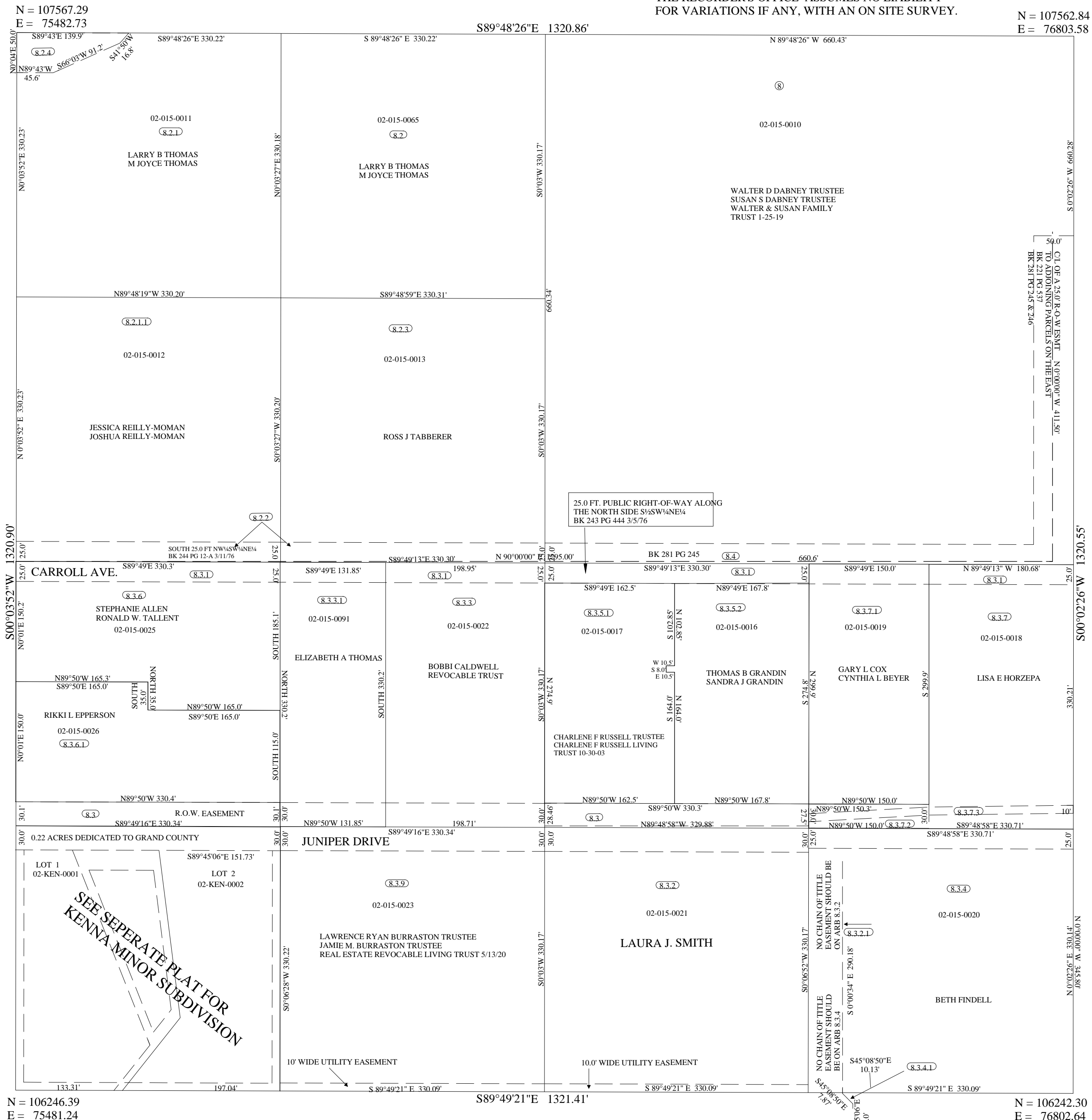
N 0°01'E 272.9'

# SW1/4NE1/4 SECTION 15 T26S R22E SLB&M

SCALE: 1" = 100'

THIS PLAT IS DRAWN FROM THE PARCEL DESCRIPTIONS AND IS SOLELY FOR THE PURPOSE OF ASSISTING IN LOCATING THE LAND. THE RECORDER'S OFFICE ASSUMES NO LIABILITY FOR VARIATIONS IF ANY, WITH AN ON SITE SURVEY.

N = 107562.84  
E = 76803.58



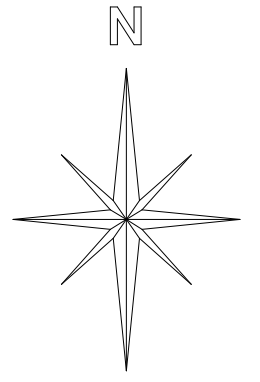
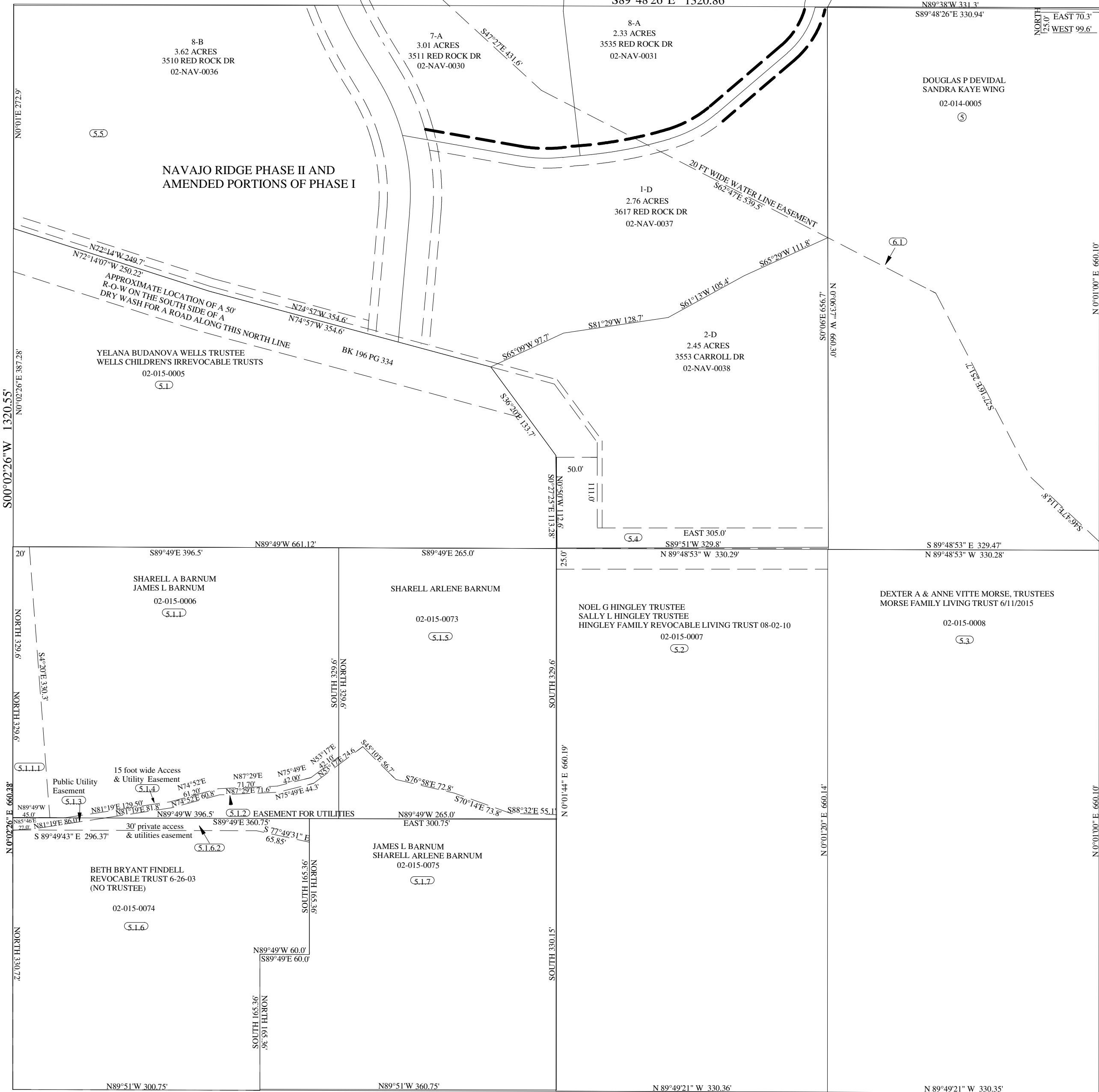
# SE1/4NE1/4 SECTION 15 T26S R22E SLB&M

SCALE: 1" = 100'

THIS PLAT IS DRAWN FROM THE PARCEL DESCRIPTIONS AND IS SOLELY FOR THE PURPOSE OF ASSISTING IN LOCATING THE LAND. THE RECORDER'S OFFICE ASSUMES NO LIABILITY FOR VARIATIONS IF ANY, WITH AN ON SITE SURVEY.

N = 107562.84  
E = 76803.58

N = 107558.40  
E = 78124.43



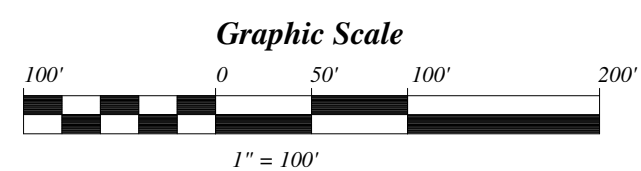
N = 106242.30  
E = 76802.64

S89°49'21\" E 1321.41'

N 89°49'21\" W 330.36'

N 89°49'21\" W 330.35'

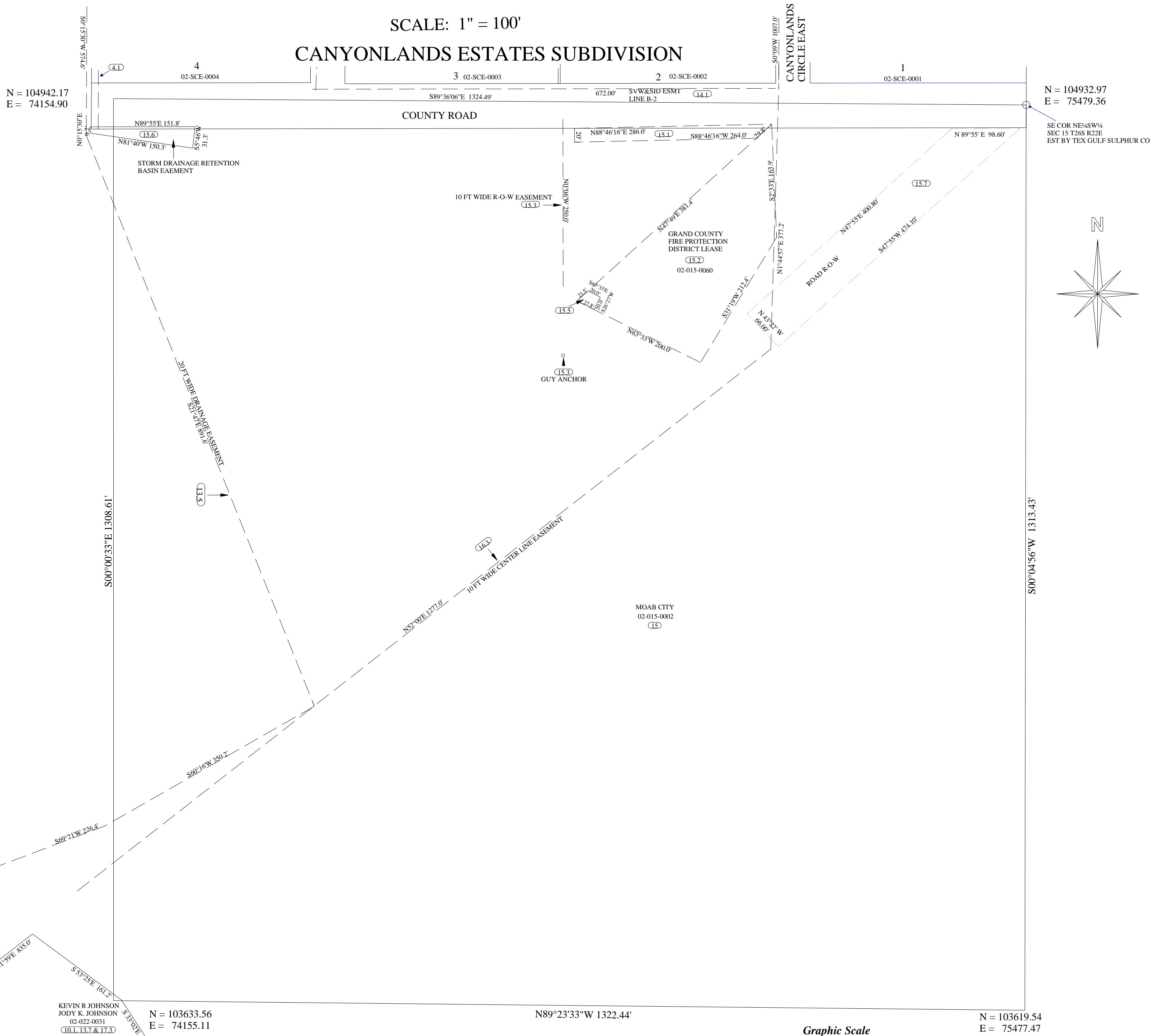
N = 106238.20  
E = 78124.04



# SE1/4SW1/4 SECTION 15 T26S R22E SLB&M

SCALE: 1" = 100'

## CANYONLANDS ESTATES SUBDIVISION



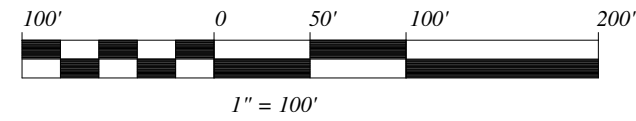




# NW1/4NW1/4 SECTION 15 T26S R22E

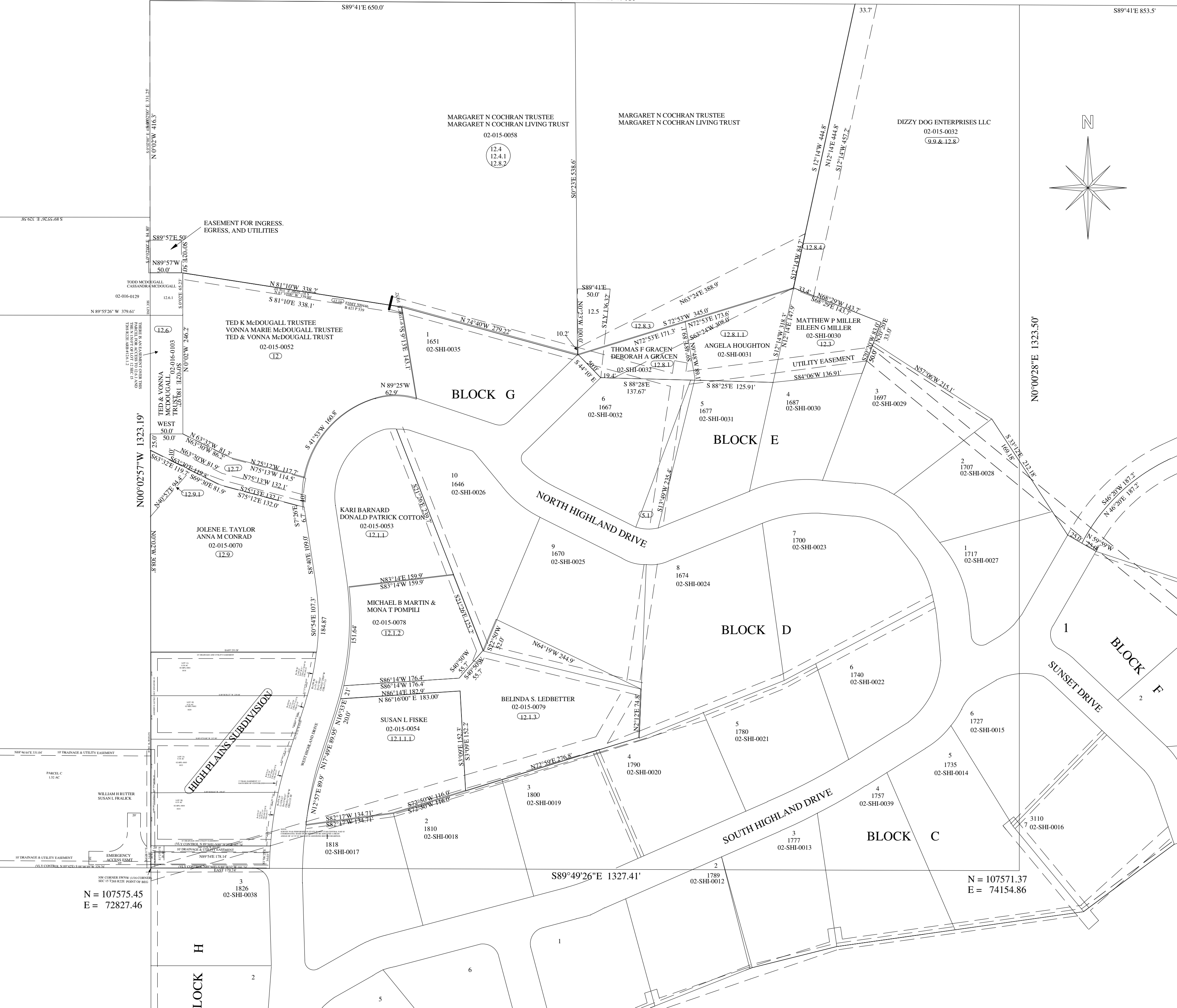
THIS PLAT IS DRAWN FROM THE PARCEL DESCRIPTIONS AND IS SOLELY FOR THE PURPOSE OF ASSISTING IN LOCATING THE LAND.  
THE RECORDER'S OFFICE ASSUMES NO LIABILITY FOR VARIATIONS IF ANY, WITH AN ON SITE SURVEY.

Graphic Scale



N = 108901.56  
E = 72825.86

N = 108894.87  
E = 74155.04



N00°02'57\"W 1323.19'

N = 107575.45  
E = 72827.46

S89°42'42\"E 1329.19'

S89°49'26\"E 1327.41'

N0°00'28\"E 1323.50'

N = 107571.37  
E = 74154.86

BLOCK G

BLOCK E

BLOCK D

BLOCK C

BLOCK F

HIGHLANDS SUBDIVISION

NORTH HIGHLAND DRIVE

SOUTH HIGHLAND DRIVE

SUNSET DRIVE

MARGARET N COCHRAN TRUSTEE  
MARGARET N COCHRAN LIVING TRUST  
02-015-0058  
(12.4)  
(12.4.1)  
(12.8.2)

MARGARET N COCHRAN TRUSTEE  
MARGARET N COCHRAN LIVING TRUST

DIZZY DOG ENTERPRISES LLC  
02-015-0032  
(9.9 & 12.8)

TED K McDOUGALL TRUSTEE  
VONNA MARIE McDOUGALL TRUSTEE  
TED & VONNA McDOUGALL TRUST  
02-015-0052  
(12)

1  
1651  
02-SHI-0035

THOMAS F GRACEN  
DEBORAH A GRACEN  
02-SHI-0032  
(12.8.1)

ANGELA HOUGHTON  
02-SHI-0031  
(12.8.1.1)

MATTHEW P MILLER  
EILEEN G MILLER  
02-SHI-0030  
(12.3)

JOLENE E. TAYLOR  
ANNA M CONRAD  
02-015-0070  
(12.9)

KARI BARNARD  
DONALD PATRICK COTTON  
02-015-0053  
(12.1.1)

MICHAEL B MARTIN &  
MONA T POMPILI  
02-015-0078  
(12.1.2)

SUSAN L FISKE  
02-015-0054  
(12.1.1.1)

BELINDA S. LEDBETTER  
02-015-0079  
(12.1.3)

WILLIAM H RUTTER  
SUSAN L FRALICK

1818  
02-SHI-0017

2  
1810  
02-SHI-0018

3  
1800  
02-SHI-0019

4  
1790  
02-SHI-0020

5  
1780  
02-SHI-0021

6  
1740  
02-SHI-0022

6  
1727  
02-SHI-0015

5  
1735  
02-SHI-0014

4  
1757  
02-SHI-0039

3  
1777  
02-SHI-0013

2  
1789  
02-SHI-0012

6  
1667  
02-SHI-0032

5  
1677  
02-SHI-0031

4  
1687  
02-SHI-0030

3  
1697  
02-SHI-0029

1  
1717  
02-SHI-0027

2  
1707  
02-SHI-0028

7  
1700  
02-SHI-0023

8  
1674  
02-SHI-0024

9  
1670  
02-SHI-0025

10  
1646  
02-SHI-0026

1  
1717  
02-SHI-0027

2  
1707  
02-SHI-0028

7  
1700  
02-SHI-0023

8  
1674  
02-SHI-0024

9  
1670  
02-SHI-0025

10  
1646  
02-SHI-0026

1  
1717  
02-SHI-0027

2  
1707  
02-SHI-0028

7  
1700  
02-SHI-0023

8  
1674  
02-SHI-0024

9  
1670  
02-SHI-0025

10  
1646  
02-SHI-0026

1  
1717  
02-SHI-0027

2  
1707  
02-SHI-0028

7  
1700  
02-SHI-0023

8  
1674  
02-SHI-0024

9  
1670  
02-SHI-0025

10  
1646  
02-SHI-0026

1  
1717  
02-SHI-0027

2  
1707  
02-SHI-0028

7  
1700  
02-SHI-0023

8  
1674  
02-SHI-0024

9  
1670  
02-SHI-0025

10  
1646  
02-SHI-0026

1  
1717  
02-SHI-0027

2  
1707  
02-SHI-0028

7  
1700  
02-SHI-0023

8  
1674  
02-SHI-0024

9  
1670  
02-SHI-0025

10  
1646  
02-SHI-0026

1  
1717  
02-SHI-0027

2  
1707  
02-SHI-0028

7  
1700  
02-SHI-0023

8  
1674  
02-SHI-0024

9  
1670  
02-SHI-0025

10  
1646  
02-SHI-0026

1  
1717  
02-SHI-0027

2  
1707  
02-SHI-0028

7  
1700  
02-SHI-0023

8  
1674  
02-SHI-0024

9  
1670  
02-SHI-0025

10  
1646  
02-SHI-0026

1  
1717  
02-SHI-0027

2  
1707  
02-SHI-0028

7  
1700  
02-SHI-0023

8  
1674  
02-SHI-0024

9  
1670  
02-SHI-0025

10  
1646  
02-SHI-0026

1  
1717  
02-SHI-0027

2  
1707  
02-SHI-0028

7  
1700  
02-SHI-0023

8  
1674  
02-SHI-0024

9  
1670  
02-SHI-0025

10  
1646  
02-SHI-0026

1  
1717  
02-SHI-0027

2  
1707  
02-SHI-0028

7  
1700  
02-SHI-0023

8  
1674  
02-SHI-0024

9  
1670  
02-SHI-0025

10  
1646  
02-SHI-0026

1  
1717  
02-SHI-0027

2  
1707  
02-SHI-0028

7  
1700  
02-SHI-0023

8  
1674  
02-SHI-0024

9  
1670  
02-SHI-0025

10  
1646  
02-SHI-0026

1  
1717  
02-SHI-0027

2  
1707  
02-SHI-0028

7  
1700  
02-SHI-0023

8  
1674  
02-SHI-0024

9  
1670  
02-SHI-0025

10  
1646  
02-SHI-0026

1  
1717  
02-SHI-0027

2  
1707  
02-SHI-0028

7  
1700  
02-SHI-0023

8  
1674  
02-SHI-0024

9  
1670  
02-SHI-0025

10  
1646  
02-SHI-0026

1  
1717  
02-SHI-0027

2  
1707  
02-SHI-0028

7  
1700  
02-SHI-0023

8  
1674  
02-SHI-0024

9  
1670  
02-SHI-0025

10  
1646  
02-SHI-0026

1  
1717  
02-SHI-0027

2  
1707  
02-SHI-0028

7  
1700  
02-SHI-0023

8  
1674  
02-SHI-0024

9  
1670  
02-SHI-0025

10  
1646  
02-SHI-0026

1  
1717  
02-SHI-0027

2  
1707  
02-SHI-0028

7  
1700  
02-SHI-0023

8  
1674  
02-SHI-0024

9  
1670  
02-SHI-0025

10  
1646  
02-SHI-0026

1  
1717  
02-SHI-0027

2  
1707  
02-SHI-0028

7  
1700  
02-SHI-0023

8  
1674  
02-SHI-0024

9  
1670  
02-SHI-0025

10  
1646  
02-SHI-0026

1  
1717  
02-SHI-0027

2  
1707  
02-SHI-0028

7  
1700  
02-SHI-0023

8  
1674  
02-SHI-0024

9  
1670  
02-SHI-0025

10  
1646  
02-SHI-0026

1  
1717  
02-SHI-0027

2  
1707  
02-SHI-0028

7  
1700  
02-SHI-0023

8  
1674  
02-SHI-0024

9  
1670  
02-SHI-0025

10  
1646  
02-SHI-0026

1  
1717  
02-SHI-0027

2  
1707  
02-SHI-0028

7  
1700  
02-SHI-0023

8  
1674  
02-SHI-0024

9  
1670  
02-SHI-0025

10  
1646  
02-SHI-0026

1  
1717  
02-SHI-0027

2  
1707  
02-SHI-0028

7  
1700  
02-SHI-0023

8  
1674  
02-SHI-0024

9  
1670  
02-SHI-0025

10  
1646  
02-SHI-0026

1  
1717  
02-SHI-0027

2  
1707  
02-SHI-0028

7  
1700  
02-SHI-0023

8  
1674  
02-SHI-0024

9  
1670  
02-SHI-0025

10  
1646  
02-SHI-0026

1  
1717  
02-SHI-0027

2  
1707  
02-SHI-0028

7  
1700  
02-SHI-0023

8  
1674  
02-SHI-0024

9  
1670  
02-SHI-0025

10  
1646  
02-SHI-0026

1  
1717  
02-SHI-0027

2  
1707  
02-SHI-0028

7  
1700  
02-SHI-0023

8  
1674  
02-SHI-0024

9  
1670  
02-SHI-0025

10  
1646  
02-SHI-0026

1  
1717  
02-SHI-0027

2  
1707  
02-SHI-0028

7  
1700  
02-SHI-0023

8  
1674  
02-SHI-0024

9  
1670  
02-SHI-0025

10  
1646  
02-SHI-0026

1  
1717  
02-SHI-0027

2  
1707  
02-SHI-0028

7  
1700  
02-SHI-0023

8  
1674  
02-SHI-0024

9  
1670  
02-SHI-0025

10  
1646  
02-SHI-0026

1  
1717  
02-SHI-0027

2  
1707  
02-SHI-0028

7  
1700  
02-SHI-0023

8  
1674  
02-SHI-0024

9  
1670  
02-SHI-0025

10  
1646  
02-SHI-0026

1  
1717  
02-SHI-0027

2  
1707  
02-SHI-0028

7  
1700  
02-SHI-0023

8  
1674  
02-SHI-0024

9  
1670  
02-SHI-0025

10  
1646  
02-SHI-0026

1  
1717  
02-SHI-0027

2  
1707  
02-SHI-0028

7  
1700  
02-SHI-0023

8  
1674  
02-SHI-0024

9  
1670  
02-SHI-0025

10  
1646  
02-SHI-0026

1  
1717  
02-SHI-0027

2  
1707  
02-SHI-0028

7  
1700  
02-SHI-0023

8  
1674  
02-SHI-0024

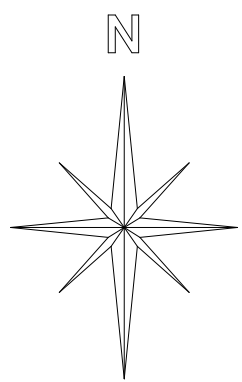
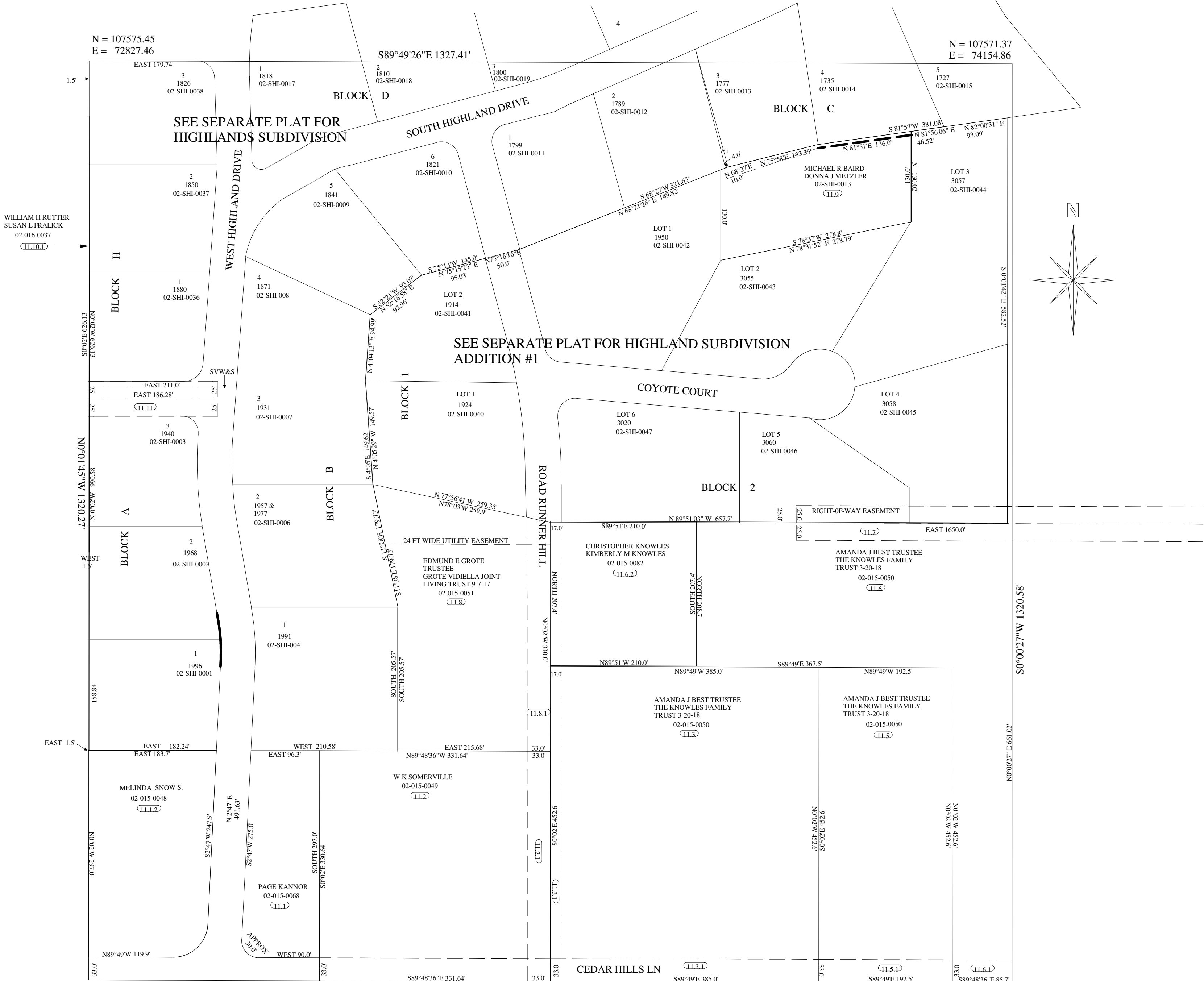
9  
1670  
02-SHI-0025

10  
1646  
02-SHI-0026

# SW<sup>1</sup>/<sub>4</sub>NW<sup>1</sup>/<sub>4</sub> OF SECTION 15, T26S, R22E, SLB&M

THIS PLAT IS DRAWN FROM THE PARCEL DESCRIPTIONS  
AND IS SOLELY FOR THE PURPOSE OF ASSISTING IN LOCATING  
THE LAND.  
THE RECORDER'S OFFICE ASSUMES NO LIABILITY  
FOR VARIATIONS IF ANY, WITH AN ON SITE SURVEY.

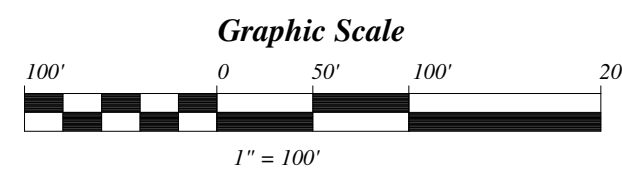
SCALE: 1" = 100'



N = 106255.18  
E = 72828.13

S89°48'36.6\"E 1326.56'

N = 106250.79  
E = 74154.69



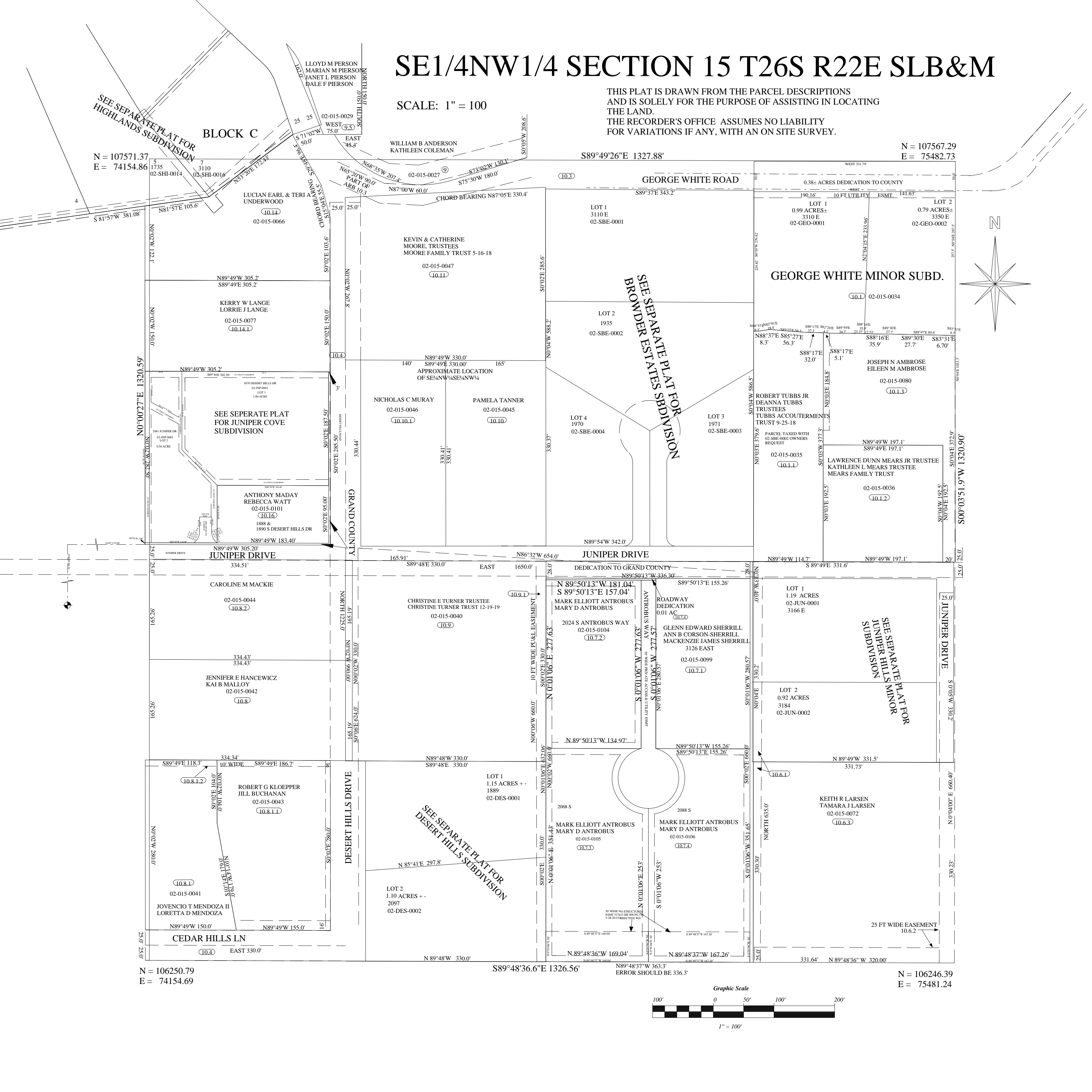
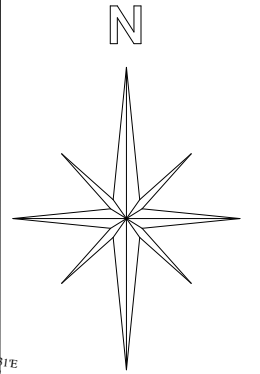


# SE1/4NW1/4 SECTION 15 T26S R22E SLB&M

SCALE: 1" = 100

THIS PLAT IS DRAWN FROM THE PARCEL DESCRIPTIONS AND IS SOLELY FOR THE PURPOSE OF ASSISTING IN LOCATING THE LAND. THE RECORDER'S OFFICE ASSUMES NO LIABILITY FOR VARIATIONS IF ANY, WITH AN ON SITE SURVEY.

N = 107567.29  
E = 75482.73

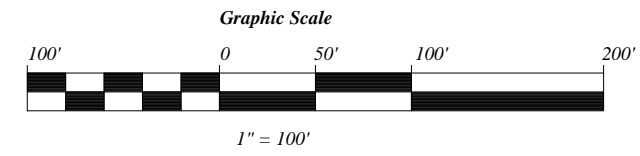


N = 106250.79  
E = 74154.69

S89°48'36.6"E 1326.56'

N89°48'37"W 363.3'  
ERROR SHOULD BE 336.3'

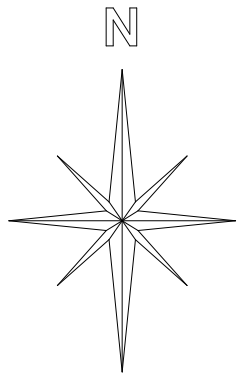
N = 106246.39  
E = 75481.24



# NW1/4SW1/4 OF SECTION 15, T26S, R22E, SLB&M

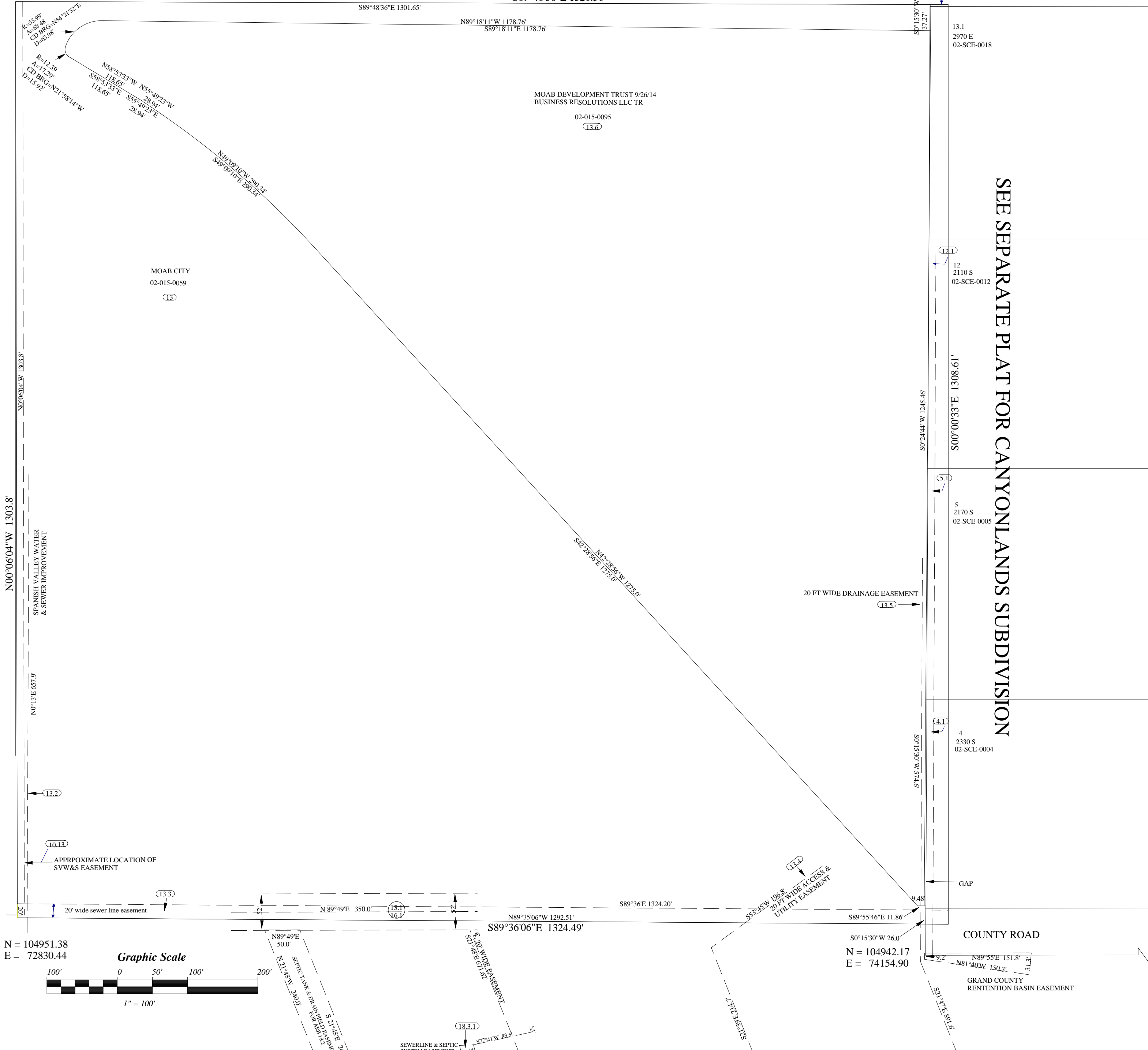
SCALE: 1" = 100'

THIS PLAT IS DRAWN FROM THE PARCEL DESCRIPTIONS AND IS SOLELY FOR THE PURPOSE OF ASSISTING IN LOCATING THE LAND.  
THE RECORDER'S OFFICE ASSUMES NO LIABILITY FOR VARIATIONS IF ANY, WITH AN ON SITE SURVEY.

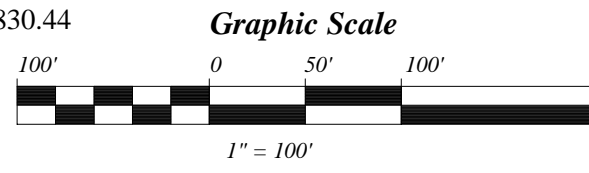


N = 106255.18  
E = 72828.13

N = 106250.79  
E = 74154.69



SEE SEPARATE PLAT FOR CANYONLANDS SUBDIVISION



N = 104951.38  
E = 72830.44

N = 104942.17  
E = 74154.90

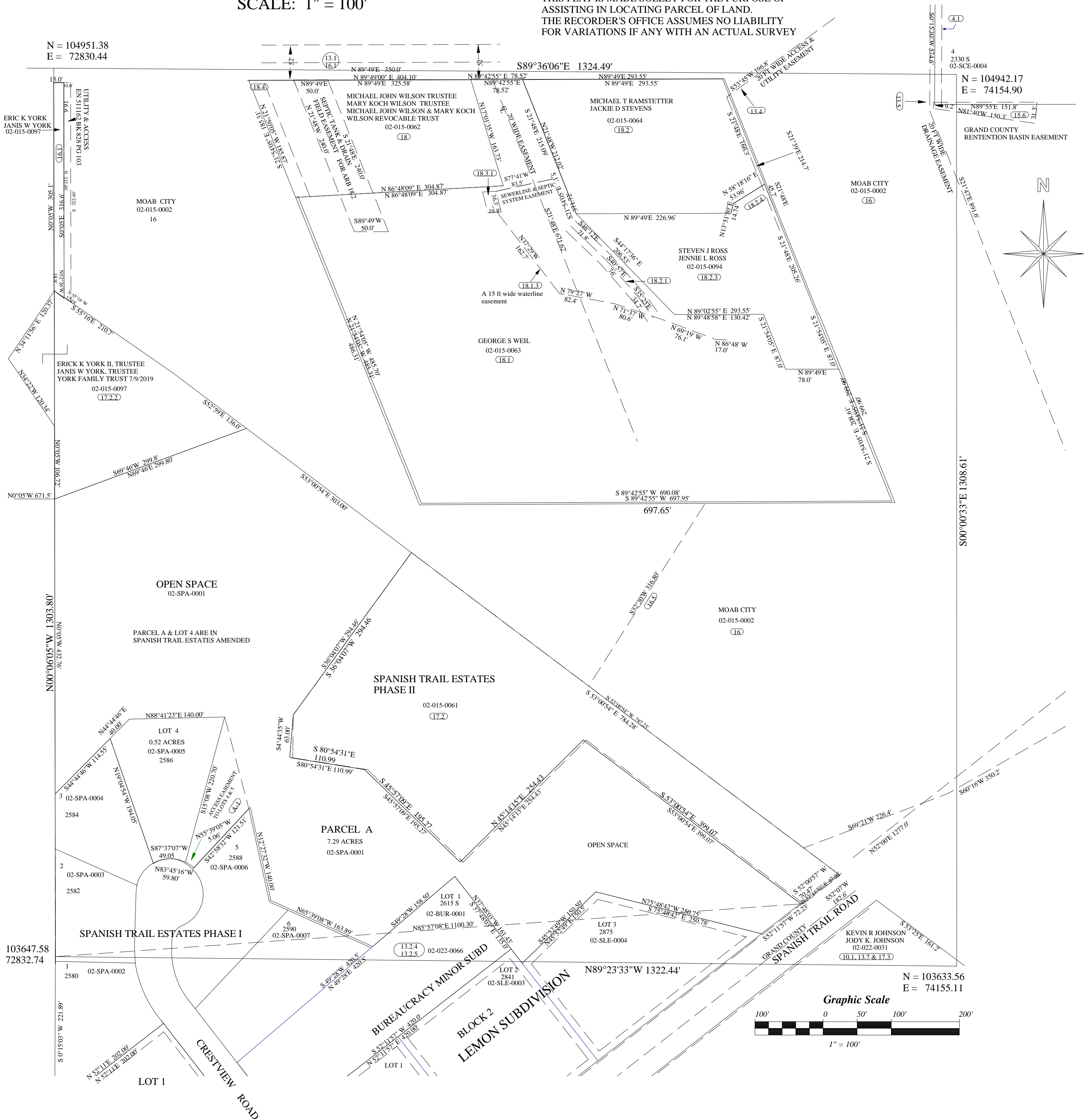
COUNTY ROAD

GRAND COUNTY  
RETENTION BASIN EASEMENT

# SW1/4SW1/4 SECTION 15 T26S R22E SLB&M

SCALE: 1" = 100'

THIS PLAT IS MADE SOLELY FOR THE PURPOSE OF ASSISTING IN LOCATING PARCEL OF LAND. THE RECORDER'S OFFICE ASSUMES NO LIABILITY FOR VARIATIONS IF ANY WITH AN ACTUAL SURVEY





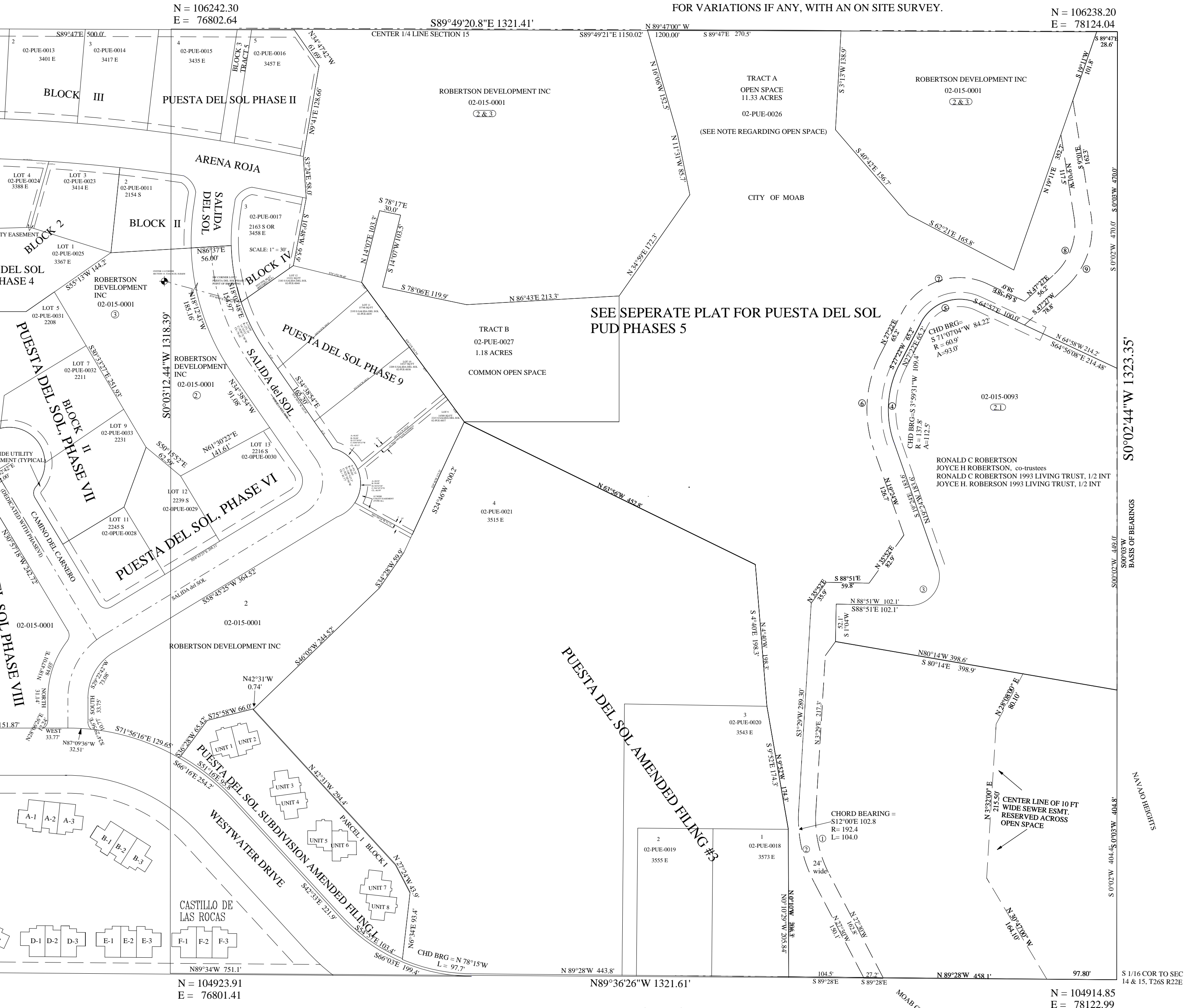
# SE1/4 SECTION 15 T26S R22E



# NE1/4SE1/4 SECTION 15 T26S R22E

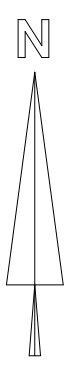
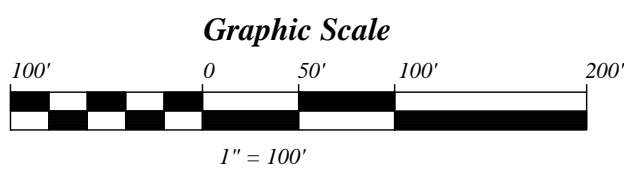
SCALE: 1" = 100'

THIS PLAT IS DRAWN FROM THE PARCEL DESCRIPTIONS AND IS SOLELY FOR THE PURPOSE OF ASSISTING IN LOCATING THE LAND.  
THE RECORDER'S OFFICE ASSUMES NO LIABILITY FOR VARIATIONS IF ANY, WITH AN ON SITE SURVEY.



SEE SEPERATE PLAT FOR PUESTA DEL SOL PUD PHASES 5

PUESTA DEL SOL AMENDED FILING #3



S0°02'44"W 1323.35'

S00°02'W 449.0'

S 0°02'W 404.45'

S 1/16 COR TO SEC 14 & 15, T26S R22E

MOAB CITY

N = 104914.85  
E = 78122.99

N = 104923.91  
E = 76801.41

N89°36'26"W 1321.61'

N = 106242.30  
E = 76802.64

N = 106238.20  
E = 78124.04

N = 106242.30  
E = 76802.64

S89°49'20.8"E 1321.41'

N 89°47'00" W 1200.00'

S 89°47'E 270.5'

S89°49'21"E 1150.02'

N 100°06'W 1323.5'

N 89°47'E 270.5'

S 3°17'W 138.9'

S 40°42'E 156.7'

S 62°21'E 165.8'

S 19°11'W 101.8'

S 19°11'W 101.8'

S 19°11'W 101.8'

S 19°11'W 101.8'

S 19°11'W 101.8'

S 19°11'W 101.8'

S 19°11'W 101.8'

S 19°11'W 101.8'

S 19°11'W 101.8'

S 19°11'W 101.8'

S 19°11'W 101.8'

S 19°11'W 101.8'

S 19°11'W 101.8'

S 19°11'W 101.8'

S 19°11'W 101.8'

S 19°11'W 101.8'

S 19°11'W 101.8'

S 19°11'W 101.8'

S 19°11'W 101.8'

S 19°11'W 101.8'

S 19°11'W 101.8'

S 19°11'W 101.8'

S 19°11'W 101.8'

S 19°11'W 101.8'

S 19°11'W 101.8'

S 19°11'W 101.8'

S 19°11'W 101.8'

S 19°11'W 101.8'

S 19°11'W 101.8'

S 19°11'W 101.8'

S 19°11'W 101.8'

S 19°11'W 101.8'

S 19°11'W 101.8'

S 19°11'W 101.8'

S 19°11'W 101.8'

S 19°11'W 101.8'

S 19°11'W 101.8'

S 19°11'W 101.8'

S 19°11'W 101.8'

S 19°11'W 101.8'

S 19°11'W 101.8'

S 19°11'W 101.8'

S 19°11'W 101.8'

S 19°11'W 101.8'

S 19°11'W 101.8'

S 19°11'W 101.8'

S 19°11'W 101.8'

S 19°11'W 101.8'

S 19°11'W 101.8'

S 19°11'W 101.8'

S 19°11'W 101.8'

S 19°11'W 101.8'

S 19°11'W 101.8'

S 19°11'W 101.8'

S 19°11'W 101.8'

S 19°11'W 101.8'

S 19°11'W 101.8'

S 19°11'W 101.8'

S 19°11'W 101.8'

S 19°11'W 101.8'

S 19°11'W 101.8'

S 19°11'W 101.8'

S 19°11'W 101.8'

S 19°11'W 101.8'

S 19°11'W 101.8'

S 19°11'W 101.8'

S 19°11'W 101.8'

S 19°11'W 101.8'

S 19°11'W 101.8'

S 19°11'W 101.8'

S 19°11'W 101.8'

S 19°11'W 101.8'

S 19°11'W 101.8'

S 19°11'W 101.8'

S 19°11'W 101.8'

S 19°11'W 101.8'

S 19°11'W 101.8'

S 19°11'W 101.8'



# NW1/4 SE1/4, SECTION 15, T26S, R22E, SLM

GRAND COUNTY SCALE 1" = 100'

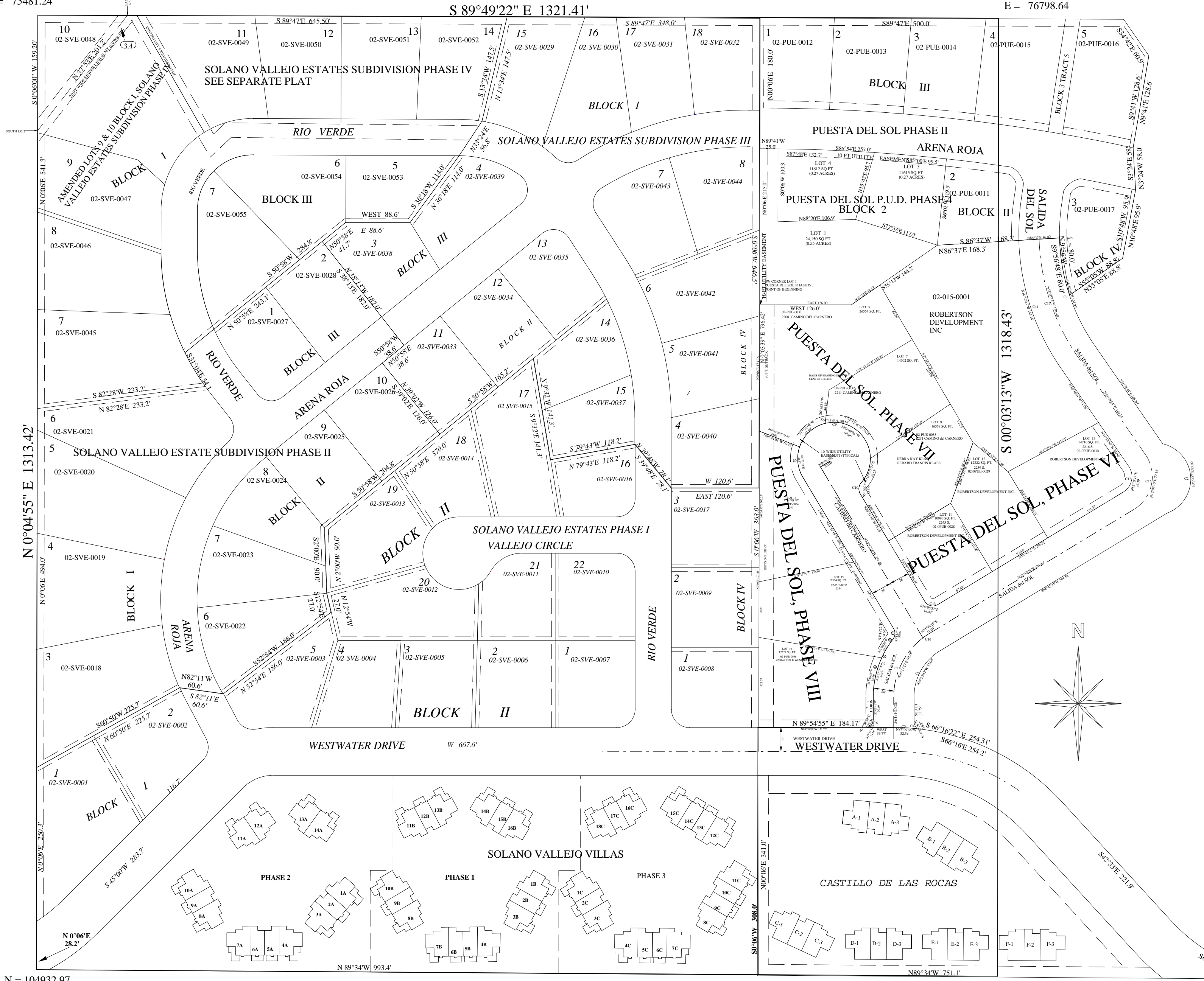
BOOK 22 PAGE 323

THIS PLAT IS DRAWN FROM THE PARCEL DESCRIPTIONS AND IS SOLELY FOR THE PURPOSE OF ASSISTING IN LOCATING THE LAND.  
THE RECORDER'S OFFICE ASSUMES NO LIABILITY FOR VARIATIONS IF ANY, WITH AN ON SITE SURVEY.

BASED ON VALLEY CONTROL

N = 106246.39  
E = 75481.24

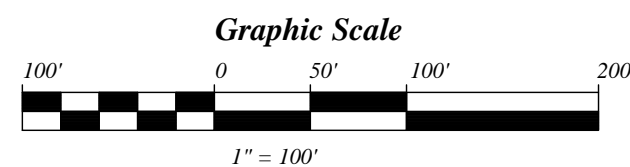
N = 106242.30  
E = 76798.64



N = 104932.97  
E = 75479.36

N 89°36'20" W 1322.08'

N = 104923.91  
E = 76801.41



# SWSE SECTION 15 T26S R22E

THIS PLAT IS DRAWN FROM THE PARCEL DESCRIPTIONS  
AND IS SOLELY FOR THE PURPOSE OF ASSISTING IN LOCATING  
THE LAND.  
THE RECORDER'S OFFICE ASSUMES NO LIABILITY  
FOR VARIATIONS IF ANY, WITH AN ON SITE SURVEY.

SCALE: 1" = 100'

N = 104932.97  
E = 75479.36

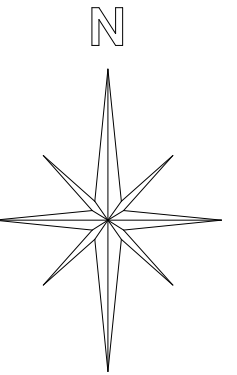
S 89°36'21.0"E 1322.08'

N = 104923.87  
E = 76801.41

S 00°04'56.0"W 1313.43'

S 00°03'13.2"W 1318.43'

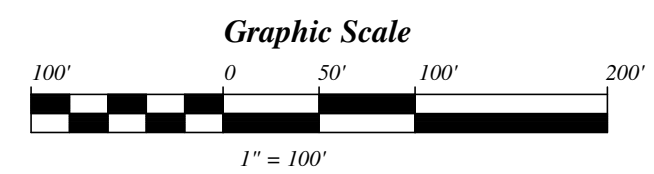
CITY OF MOAB  
02-015-0002  
④



N = 103619.54  
E = 75477.47

N 89°23'22.1"W 1322.78'

N = 103605.45  
E = 76800.17



# SE1/4SE1/4 SECTION 15 T26S R22E

SCALE: 1" = 100'

THIS PLAT IS DRAWN FROM THE PARCEL DESCRIPTIONS  
AND IS SOLELY FOR THE PURPOSE OF ASSISTING IN LOCATING  
THE LAND.  
THE RECORDER'S OFFICE ASSUMES NO LIABILITY  
FOR VARIATIONS IF ANY, WITH AN ON SITE SURVEY.

N = 104923.87  
E = 76801.41

S89°36'21"E 1322.08'

N = 104914.78  
E = 78123.46



N = 103605.45  
E = 76800.17

N89°23'22"W 1322.78'

N = 103591.35  
E = 78122.87

