

NE1/4 SECTION 16 T26S R22E



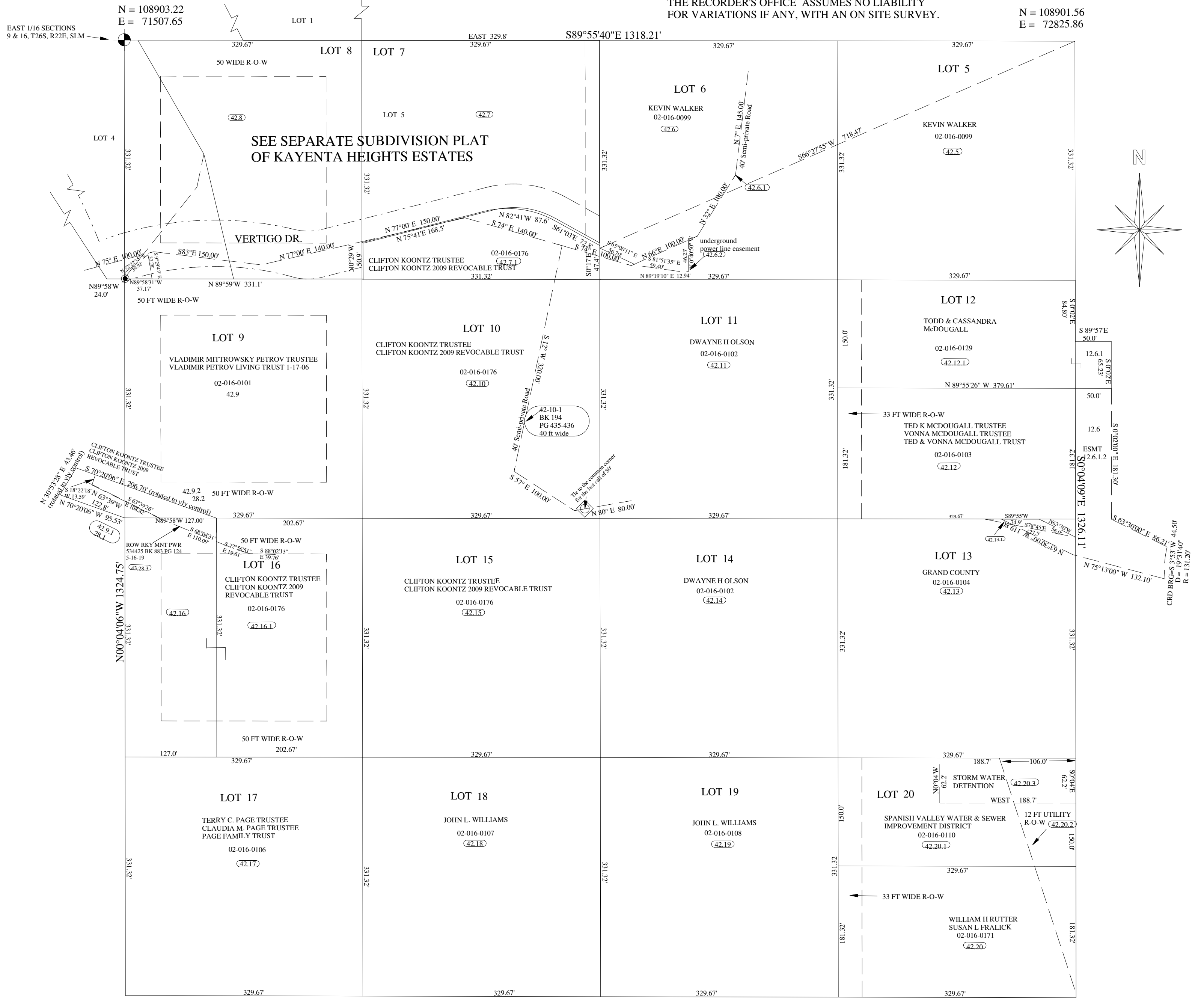
NE/14NE1/4, SEC 16, T26S, R22E, SLBM

PART OF GOVERNMENT SMALL TRACTS SUBDIVISION

ARB 42

THIS PLAT IS DRAWN FROM THE PARCEL DESCRIPTIONS AND IS SOLELY FOR THE PURPOSE OF ASSISTING IN LOCATING THE LAND.
THE RECORDER'S OFFICE ASSUMES NO LIABILITY FOR VARIATIONS IF ANY, WITH AN ON SITE SURVEY.

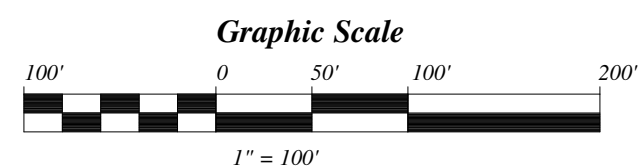
N = 108901.56
E = 72825.86



N = 107578.47
E = 71509.23

N89°52'07"W 1318.23'

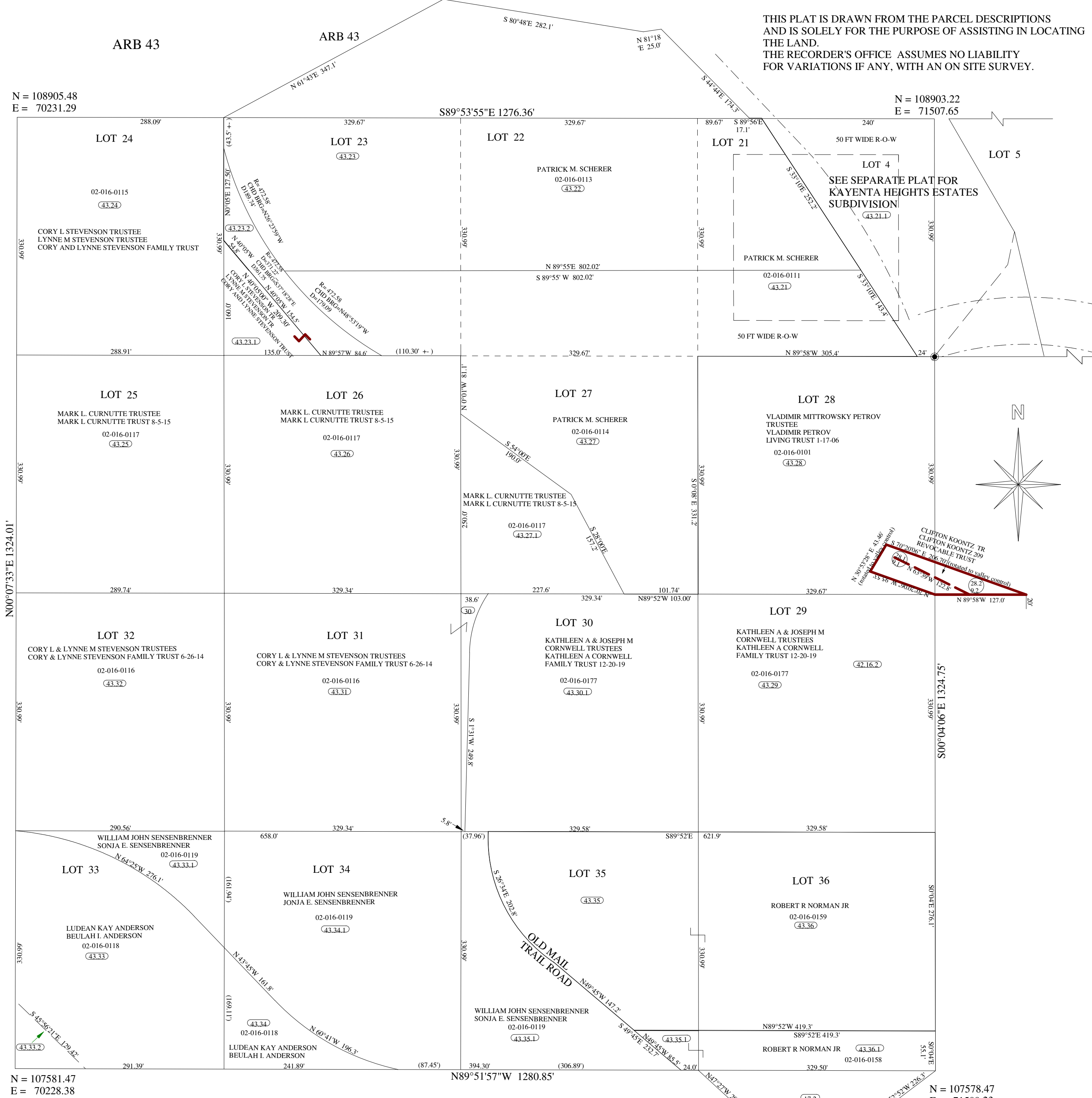
N = 107575.45
E = 72827.46



LOT 1 (NW1/4 NE1/4) OF SECTION 16, T26S, R22E, SLB&M

PART OF GOVERNMENT SMALL TRACTS SUBDIVISION

THIS PLAT IS DRAWN FROM THE PARCEL DESCRIPTIONS AND IS SOLELY FOR THE PURPOSE OF ASSISTING IN LOCATING THE LAND. THE RECORDER'S OFFICE ASSUMES NO LIABILITY FOR VARIATIONS IF ANY, WITH AN ON SITE SURVEY.



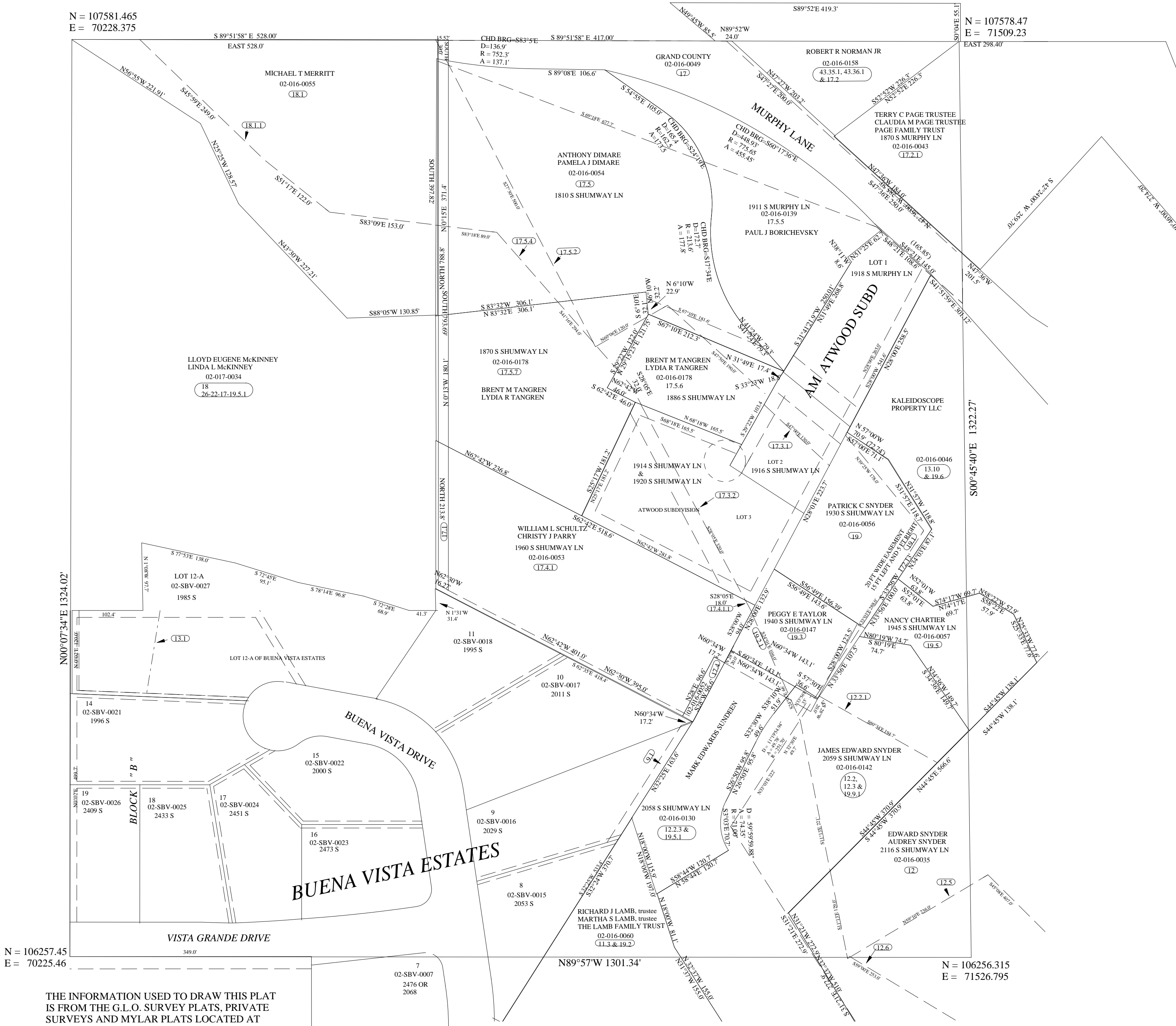
LOT 2 (SWNE) SECTION 16, T26S, R22E, SLB&M

THIS PLAT IS MADE SOLELY FOR THE PURPOSE OF ASSISTING IN LOCATING THE LAND, AND THE RECORDER ASSUMES NO LIABILITY FOR VARIATIONS IF ANY, WITH AN ACTUAL SURVEY.

SCALE: 1" = 100'

N = 107581.465
E = 70228.375

N = 107578.47
E = 71509.23



N = 106257.45
E = 70225.46

N = 106256.315
E = 71526.795

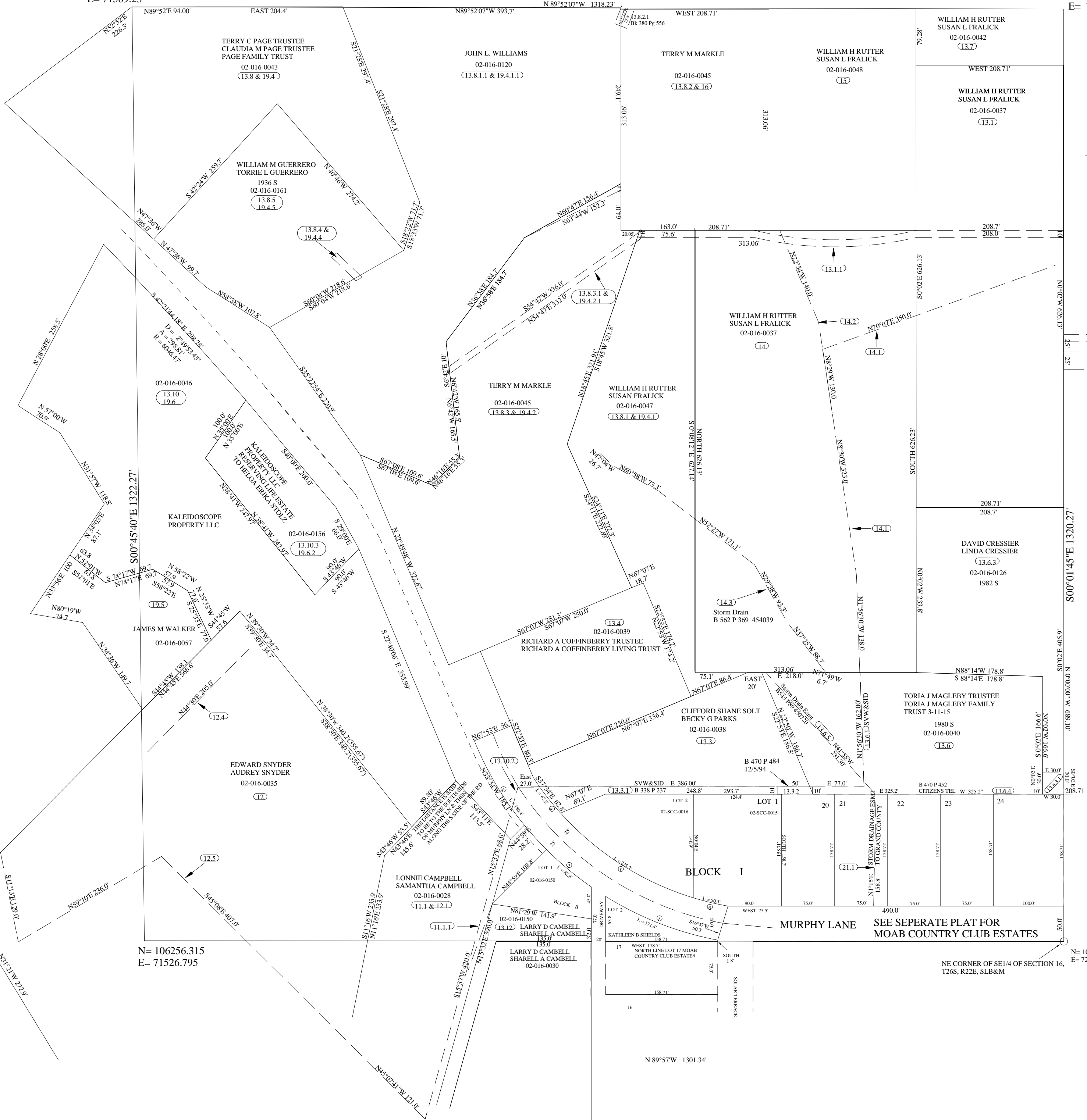
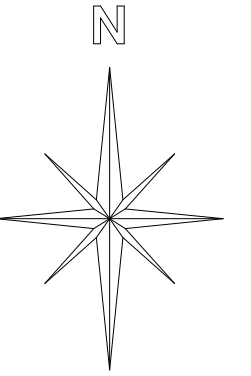
THE INFORMATION USED TO DRAW THIS PLAT IS FROM THE G.L.O. SURVEY PLATS, PRIVATE SURVEYS AND MYLAR PLATS LOCATED AT THE RECORDERS OFFICE

SE1/4NE1/4 SECTION 16 T26S R22E

SCALE: 1 = 100'

N= 107578.47
E= 71509.23

N= 107575.45
E= 72827.46



N= 106256.315
E= 71526.795

N= 106255.18
E= 72828.13

EAST 211.0'
EAST 186.28'

BLOCK I

MURPHY LANE

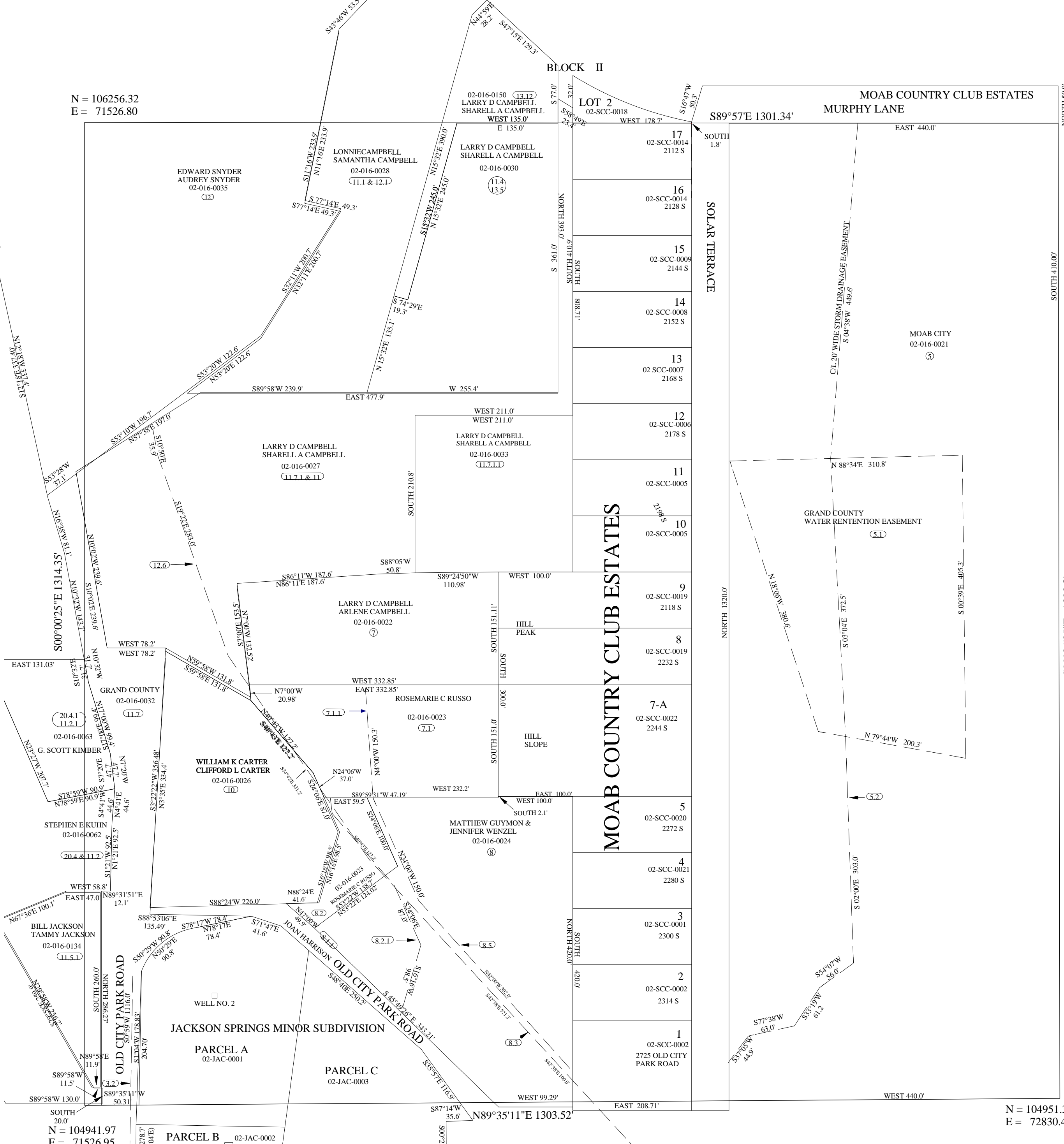
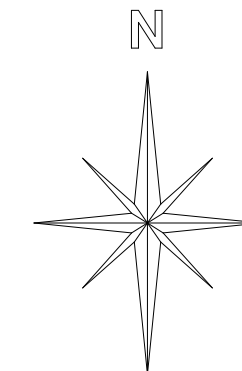
SEE SEPARATE PLAT FOR
MOAB COUNTRY CLUB ESTATES

N 89°57'W 1301.34'

NE1/4SE1/4 SECTION 16 T26S R22E

N = 106256.32
E = 71526.80

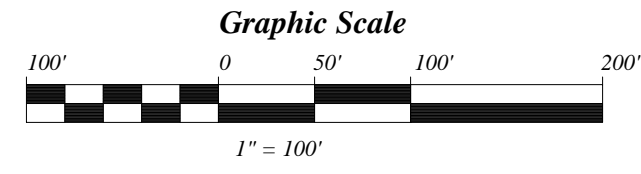
N = 106255.18
E = 72828.13



MOAB COUNTRY CLUB ESTATES

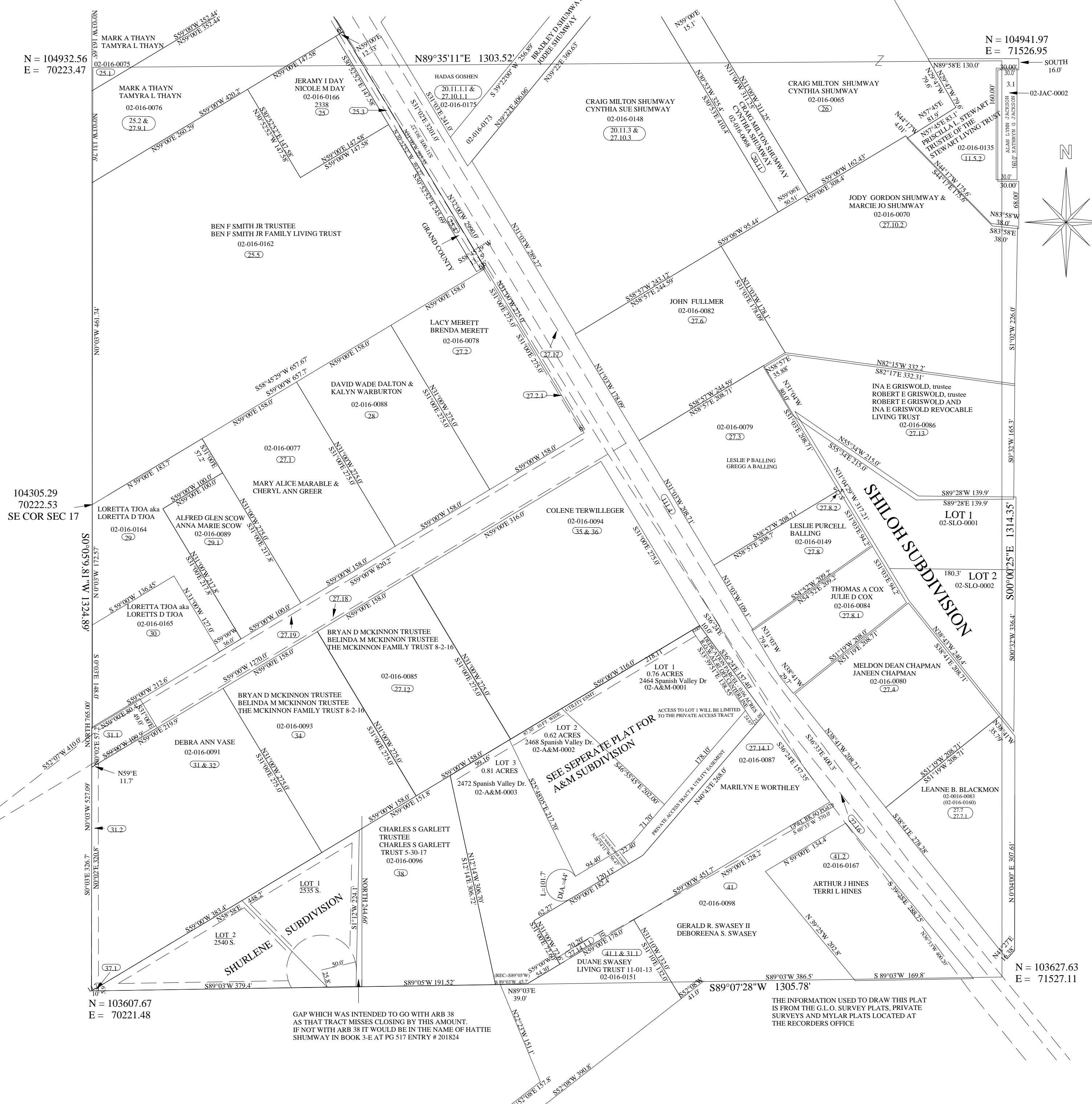
N = 104941.97
E = 71526.95

N = 104951.38
E = 72830.44



LOT 4 (SW1/4SE1/4) SECTION 16 T26S R22E

THIS PLAT IS MADE SOLELY FOR THE PURPOSE OF ASSISTING IN LOCATING THE LAND, AND THE RECORDER ASSUMES NO LIABILITY FOR VARIATIONS IF ANY, WITH AN ACTUAL SURVEY.



N = 104932.56
E = 70223.47

N = 104941.97
E = 71526.95

104305.29
70222.53
SE COR SEC 17

S0°05'09.81"W 1324.89'

S0°03'00.00"E 148.0'

S0°03'E 326.7'

S0°03'W 527.09'

N = 103607.67
E = 70221.48

GAP WHICH WAS INTENDED TO GO WITH ARB 38 AS THAT TRACT MISSES CLOSING BY THIS AMOUNT. IF NOT WITH ARB 38 IT WOULD BE IN THE NAME OF HATTIE SHUMWAY IN BOOK 3-E AT PG 517 ENTRY # 201824

SEE SEPARATE PLAT FOR A&M SUBDIVISION

THE INFORMATION USED TO DRAW THIS PLAT IS FROM THE G.L.O. SURVEY PLATS, PRIVATE SURVEYS AND MYLAR PLATS LOCATED AT THE RECORDERS OFFICE

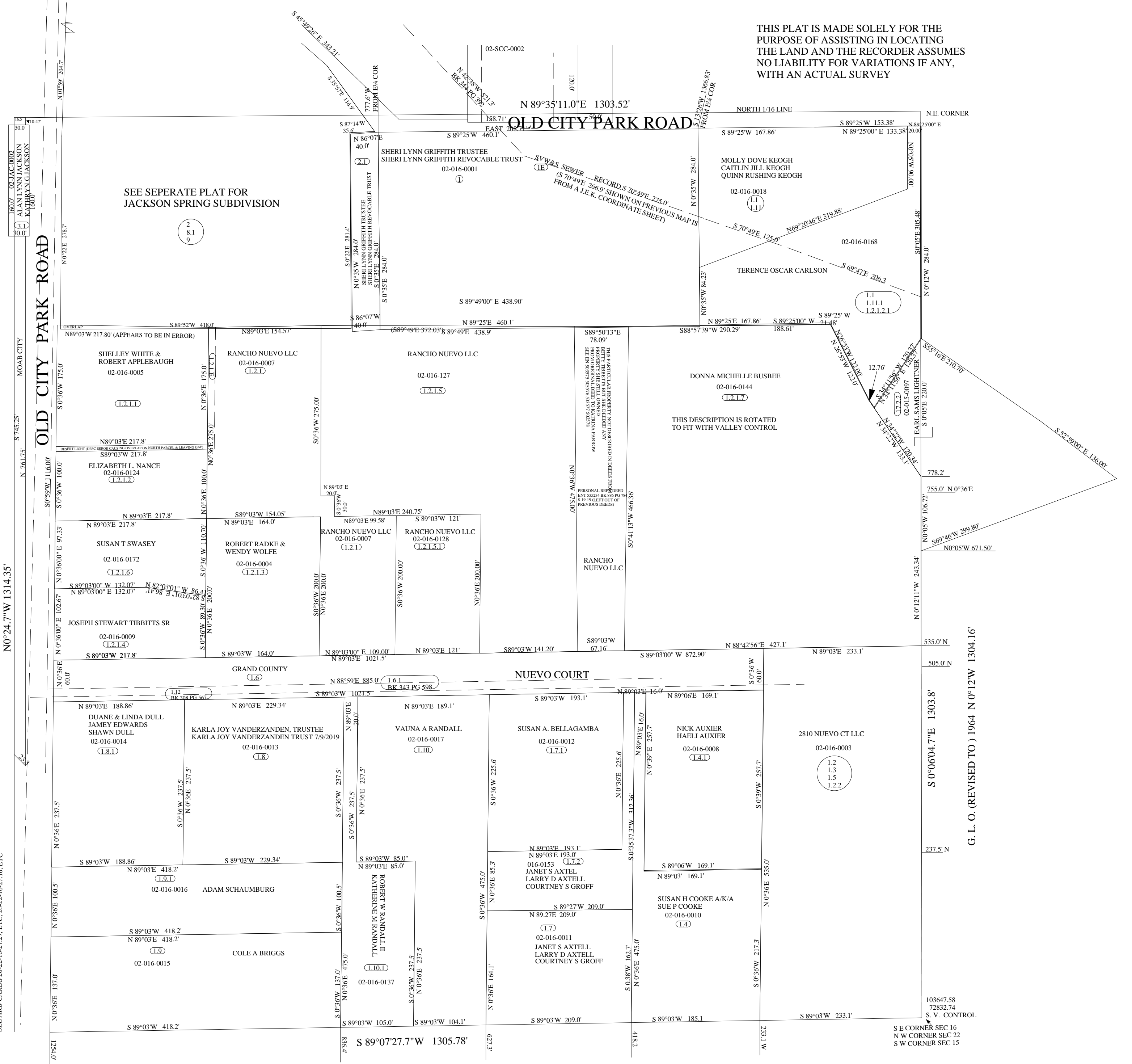
N = 103627.63
E = 71527.11

SE¹/₄SE¹/₄ SECTION 16 T 26 S R 22 E SLM

THIS PLAT IS MADE SOLELY FOR THE PURPOSE OF ASSISTING IN LOCATING THE LAND AND THE RECORDER ASSUMES NO LIABILITY FOR VARIATIONS IF ANY, WITH AN ACTUAL SURVEY

THERE ARE SPANISH VALLEY WATER & SEWER EASEMENTS ALONG THE S SIDE OF NUEVO CT, WEST SIDE OF OLD CITY PARK RD TO THE INTERSECTION WITH SHUMWAY LN AND THE S SIDE OF OLD CITY PARK RD FROM ELK CIRCLE WLY TO THE INTERSECTION WITH SHUMWAY LN. THESE EASEMENTS ARE APPROX LOCATIONS AND ARE NOT PLATABLE WITH ANY DEGREE OF ACCURACY. SEE ARB CARDS 26-22-16-27-27, ETC, 26-22-16-27-16, ETC

G. L. O. 1964 1323.73'



G. L. O. (REVISED TO) 1964 N 0°12'W 1304.16'

S E CORNER SEC 16
N W CORNER SEC 22
S W CORNER SEC 15