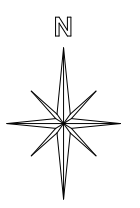


SECTION 26 T26S R22E SLBM

SCALE: 1" = 400'

THIS PLAT IS MADE SOLELY FOR THE PURPOSE OF ASSISTING IN LOCATING THE LAND AND THE RECORDER ASSUMES NO LIABILITY FOR VARIATIONS, IF ANY, WITH AN ACTUAL SURVEY



NE1/4 SECTION 26 T26S R22E SLBM



NE1/4NE1/4, SECTION 26, T26S, R22E, SLB&M

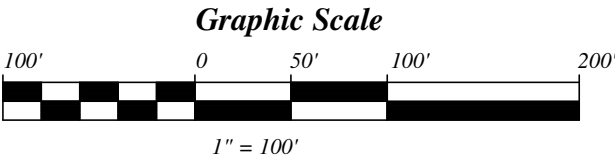
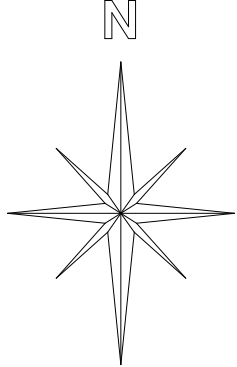
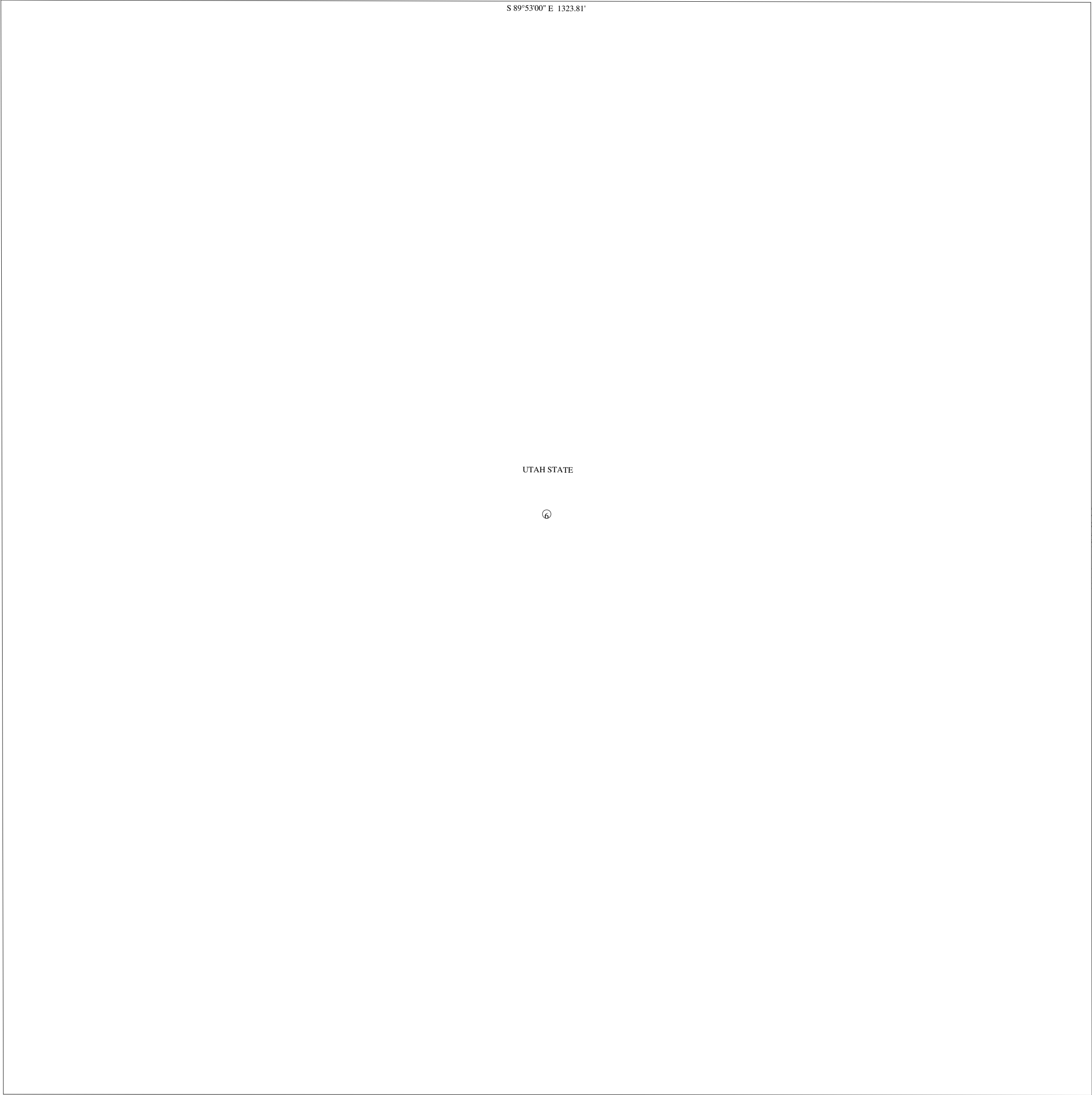
THIS PLAT IS DRAWN FROM THE PARCEL DESCRIPTIONS
AND IS SOLELY FOR THE PURPOSE OF ASSISTING IN LOCATING
THE LAND.
THE RECORDER'S OFFICE ASSUMES NO LIABILITY
FOR VARIATIONS IF ANY, WITH AN ON SITE SURVEY.

SCALE: 1" = 100'

[1916 SURVEY]

N = 98278.05
E = 80288.02

N = 98275.36
E = 83411.82



N = 96949.03
E = 82090.92

N = 96947.78
E = 83413.30

NW1/4NE1/4 SECTION 26 T26S R22E SLBM

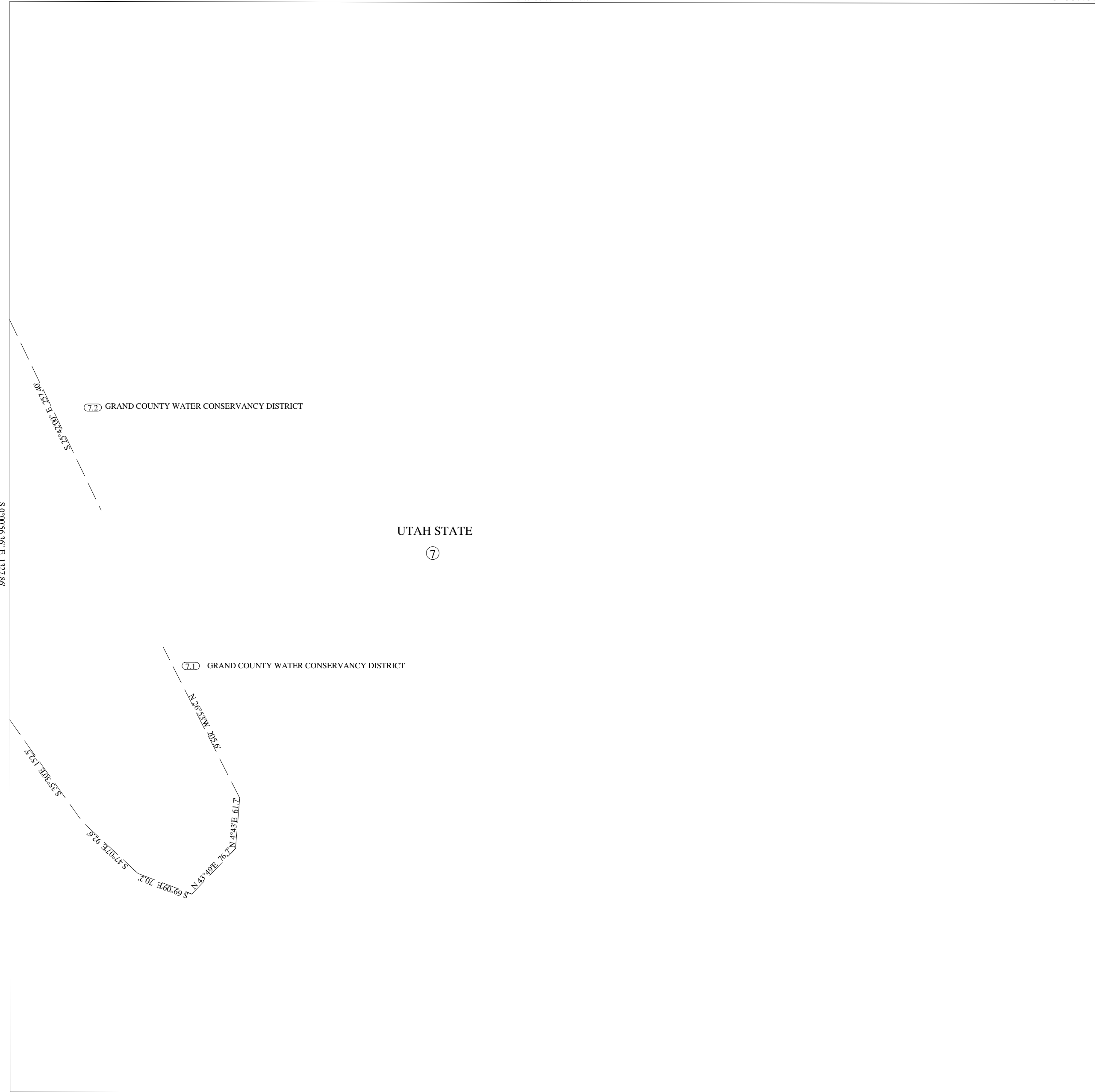
THIS PLAT IS MADE SOLELY FOR THE
PURPOSE OF ASSISTING IN LOCATING
THE LAND AND THE RECORDER ASSUMES
NO LIABILITY FOR VARIATIONS, IF ANY,
WITH AN ACTUAL SURVEY

SCALE: 1" = 100'

N = 98280.75
E = 80764.06

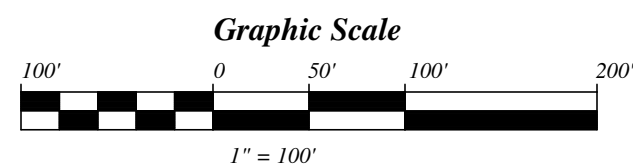
N = 98278.05
E = 82087.87

S 89°53'00" E 1323.81'



N = 96952.89
E = 80764.42

N = 96949.03
E = 82090.92

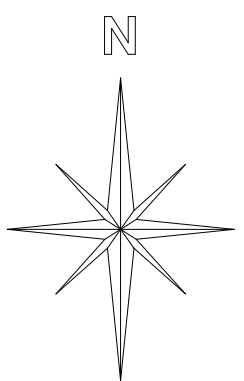
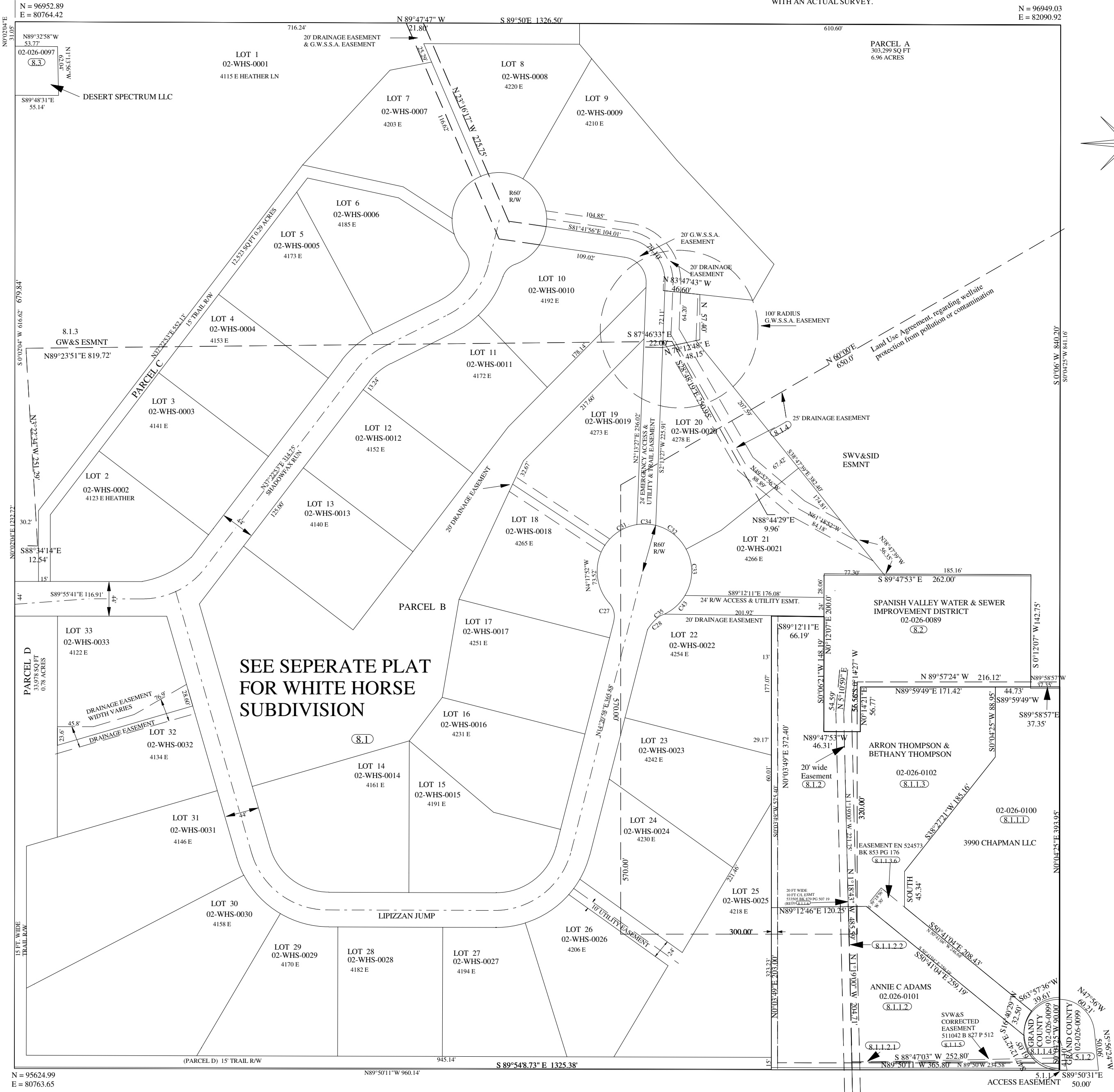


SW1/4NE 1/4 SECTION 26 T26S R22E SLBM

GRAND COUNTY

THIS PLAT IS MADE SOLELY FOR THE PURPOSE OF ASSISTING IN LOCATING THE LAND, AND THE RECORDER ASSUMES NO LIABILITY FOR VARIATIONS IF ANY, WITH AN ACTUAL SURVEY.

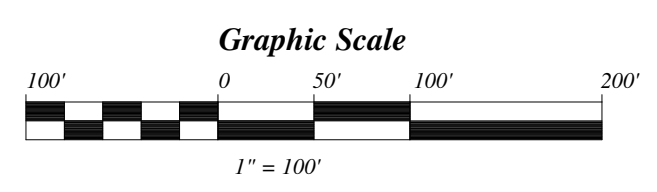
N = 96949.03
E = 82090.92



SEE SEPERATE PLAT FOR WHITE HORSE SUBDIVISION

N = 95624.99
E = 80763.65

N = 95622.73
E = 82089.03



SE1/4NE1/4, SECTION 26, T26S, R22E, SLB&M

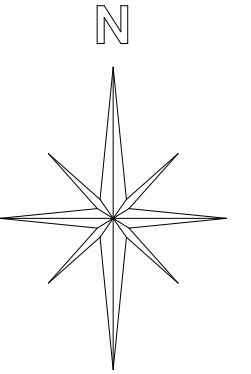
SCALE: 1" = 100'

THIS PLAT IS DRAWN FROM THE PARCEL DESCRIPTIONS
AND IS SOLELY FOR THE PURPOSE OF ASSISTING IN LOCATING
THE LAND.
THE RECORDER'S OFFICE ASSUMES NO LIABILITY
FOR VARIATIONS IF ANY, WITH AN ON SITE SURVEY.

N = 96949.03
E = 82090.92

N 89°56'45.52" W 1322.39'

N = 96947.78
E = 83413.30



STATE OF UTAH
⑤

S 0°06'00" W 840.20'

N 0°03'26.28" W 1327.58'

N 0°06' E 636.5'

S 32°51' E 738.5'

JEFF KRANTZ
PHIL KRANTZ

02-026-0092

⑤.1

S 0°04'25" W
90.00'

N 47°05' W
50.21'

GRAND
COUNTY

02-026-0092
(5.1)

ACCESS EASEMENT

N 89°54' W
50.00'

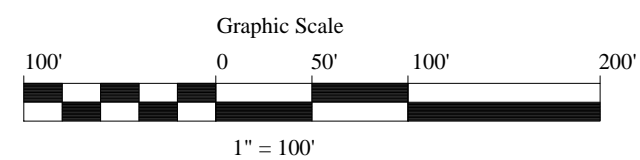
S 89°50'31" E
50.00'

N 89°54' W 412.7'

S 89°53'27.44" E 1325.61'

N = 95622.73
E = 82089.03

N = 95620.21
E = 83414.63



NE1/4NW1/4 SECTION 26 T26S R22E SLB&M

N = 98285.43
E = 79440.24

N = 98280.75
E = 80764.06

S 89°47'50.77" E 1323.83'

N 90°00'00"E 10.00'

N89°48'W 1967.1'

N89°48'W 149.8'

GRUS LLC

02-026-0018

⑨

SOUTH 10.0'

S 2°12'00" W 474.90'

S 1°10'00" W 1375.60'

N 1°41'00" E 4557.35'

S 1°41'00" W 1537.23'

15.4

15.1

9.5

9.1

S 89°47'47" E 348.50'

9.5

N 89°47'47" W 359.08'

S 0°00'34.1" W 1329.03'

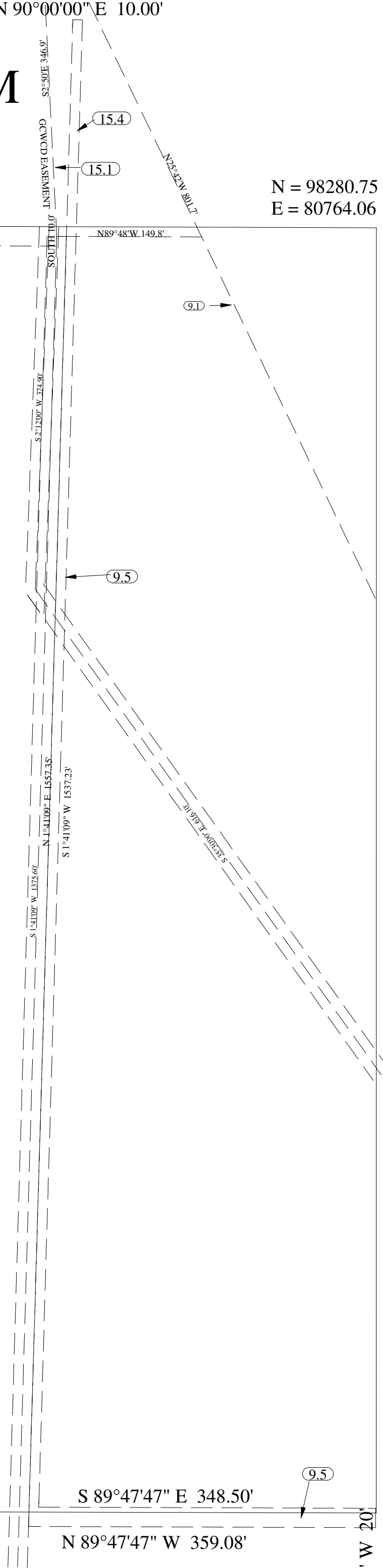
S 0°00'31.92" W 1327.88'

N = 96956.40
E = 79440.02

S 89°50'49.22" E 1323.84'

N = 96952.87
E = 80763.85

S 0°02'04" W 20'



NW1/4NW1/4 SECTION 26 T26S R22E SLB&M

N = 98290.11
E = 78116.42

N = 98285.43
E = 79440.24

S 89°47'50.81" E 1323.83'

N86°32'W 350.6'

N89°48'W 1967.1'

S 0°00'36.44" W 1330.17'

S 0°00'34.1" W 1329.03'

N = 96959.94
E = 78116.18

S 89°50'49.22" E 1323.84'

N = 96956.40
E = 79440.02

12.2

GRUS LLC

02-026-0018

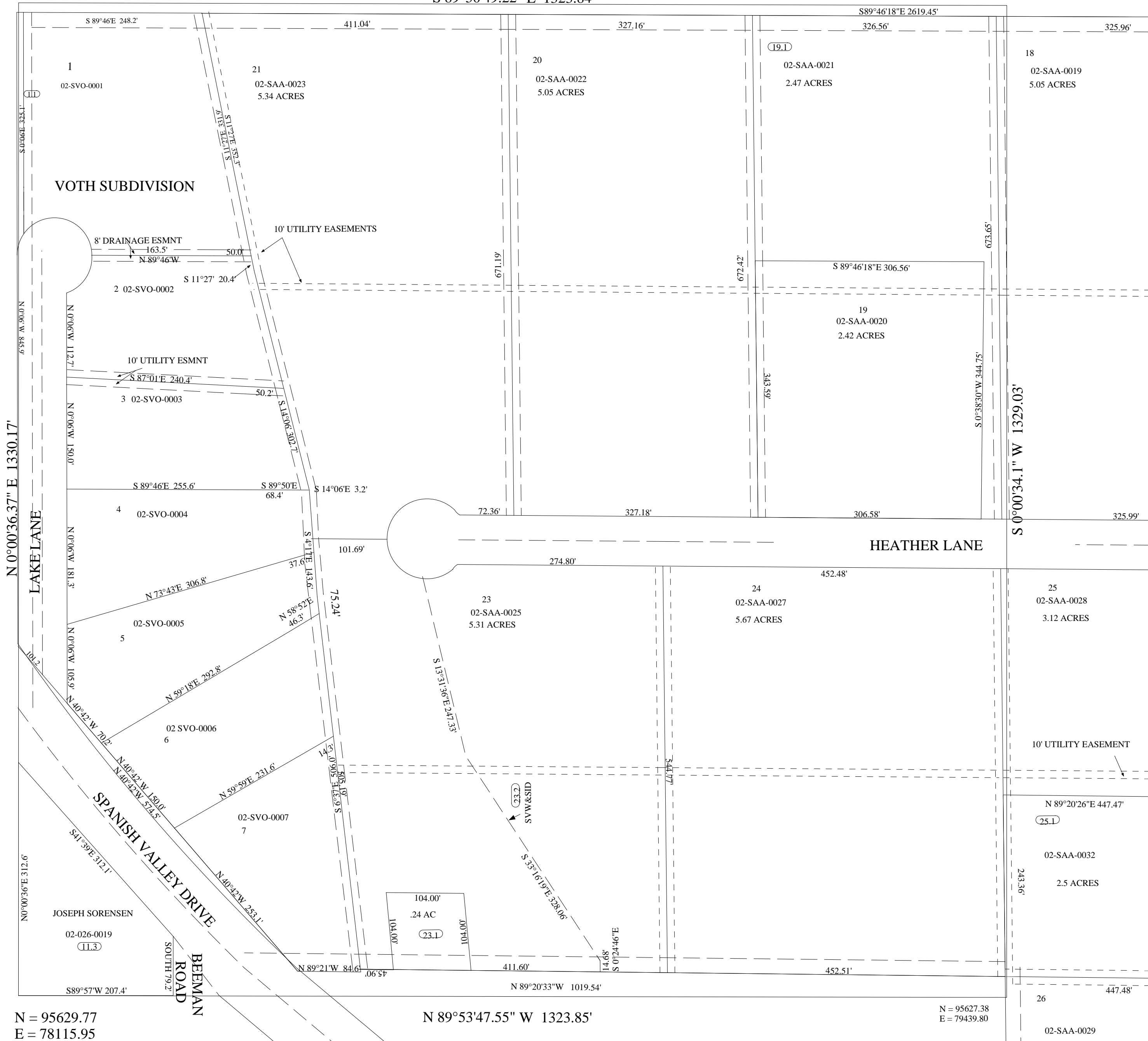
12

SW1/4NW1/4 SECTION 26 T26S R22E SLB&M

N = 96959.94
E = 78116.18

N = 96956.40
E = 79440.02

S 89°50'49.22" E 1323.84'



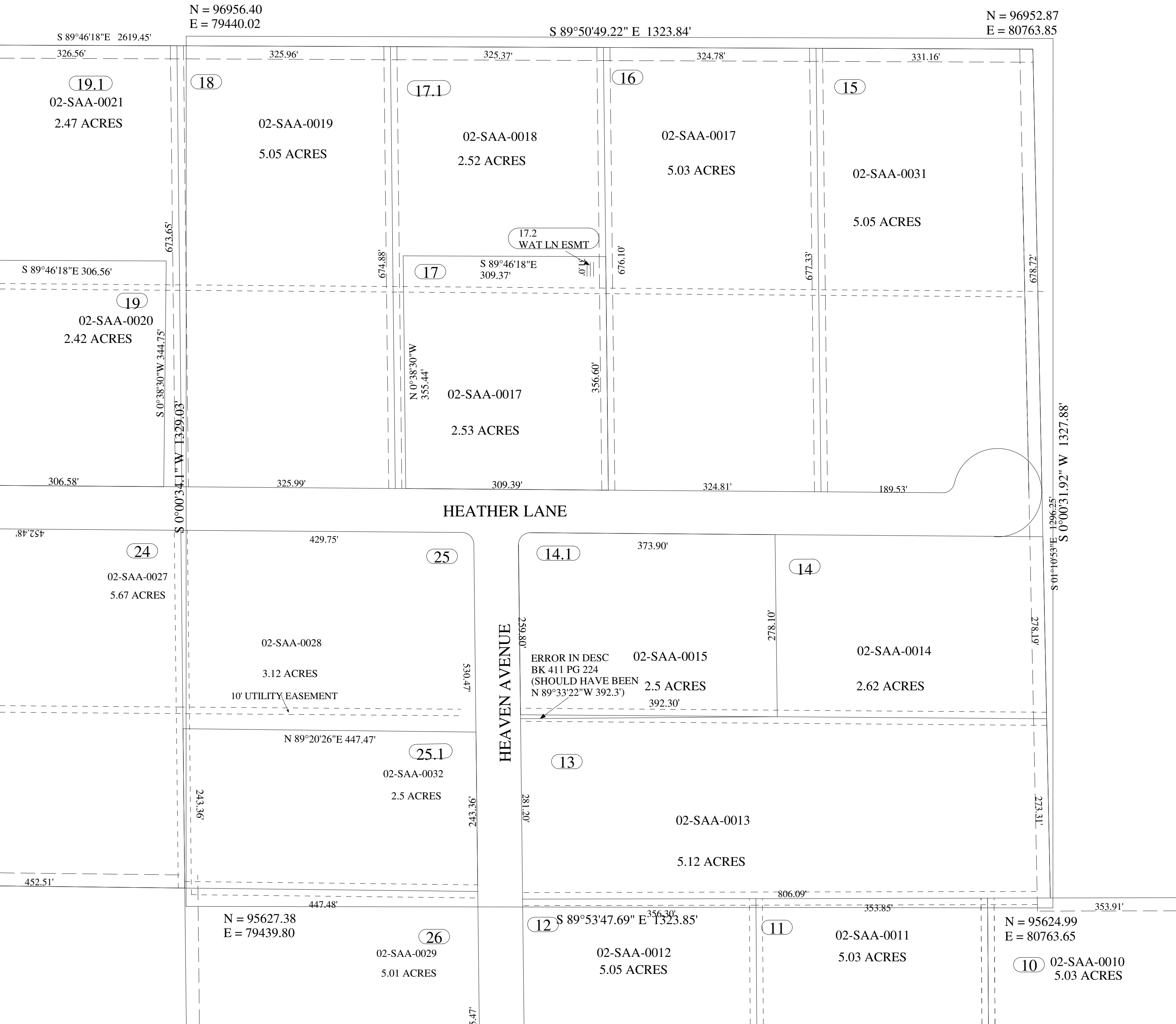
N = 95629.77
E = 78115.95

N = 95627.38
E = 79439.80

N 89°53'47.55" W 1323.85'

N = 95627.38
E = 79439.80

SENW SECTION 26 T26S R22E SLB&M



NE1/4SW1/4 SECTION 26 T26S R22E

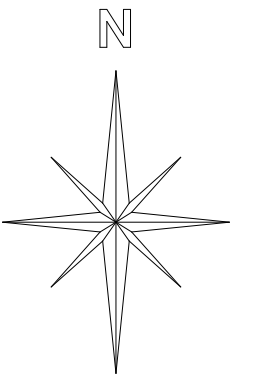
SCALE: 1" = 100'

THIS PLAT IS DRAWN FROM THE PARCEL DESCRIPTIONS AND IS SOLELY FOR THE PURPOSE OF ASSISTING IN LOCATING THE LAND. THE RECORDER'S OFFICE ASSUMES NO LIABILITY FOR VARIATIONS IF ANY, WITH AN ON SITE SURVEY

S 89°53'47.6"E 1323.85'

95627.38 N
79439.80 E

95624.99 N
80763.65 E



ALL AMERICAN ACRES SUBDIVISION

See Seperate Plat

S 00°03'05.4"W 1324.17'



PAT MCGANN
JEANNIE MCGANN
02-026-0087
14.3.1

CHD BRG = N 84°02'E
L = 21.2'
A = 23.6'
R = 15.0'

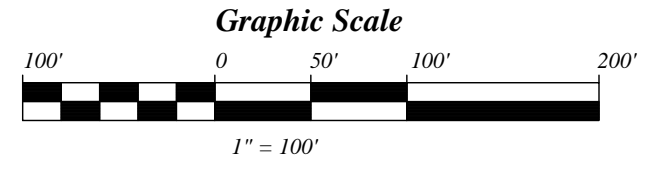
CHD BRG = N 19°30'E
L = 66.9'
A = 68.2'
R = 100.0'

JAMES MATTHEW LAMMERT
SHANNON LAMMERT
02-026-0080
14.3.2

ARB # 1.8
APPROXIMATE LOCATION
ORIGINAL DESC IS NOT SPECIFIC

OVERLAP CREATED BY
BOUNDARY DESCRIPTION
OF ALL AMERICAN ACRES

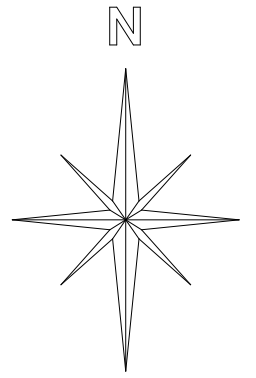
94300.82 N
80762.46 E



NW1/4 SW1/4 SECTION 26 T26S R22 E

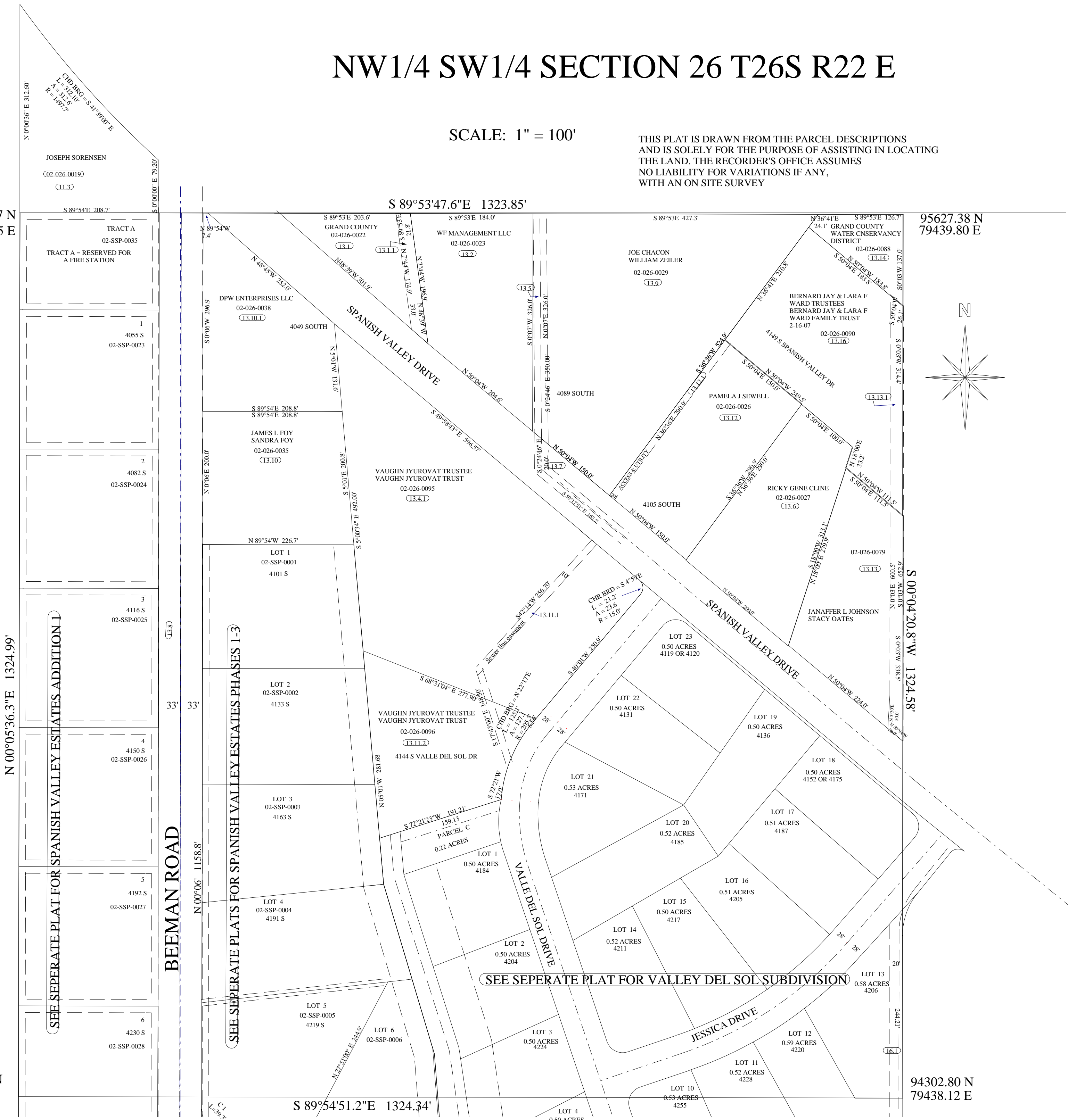
SCALE: 1" = 100'

THIS PLAT IS DRAWN FROM THE PARCEL DESCRIPTIONS AND IS SOLELY FOR THE PURPOSE OF ASSISTING IN LOCATING THE LAND. THE RECORDER'S OFFICE ASSUMES NO LIABILITY FOR VARIATIONS IF ANY, WITH AN ON SITE SURVEY



95629.77 N
78115.95 E

95627.38 N
79439.80 E



JOSEPH SORENSEN
02-026-0019
11.3

TRACT A
02-SSP-0035
TRACT A = RESERVED FOR
A FIRE STATION

1
4055 S
02-SSP-0023

2
4082 S
02-SSP-0024

3
4116 S
02-SSP-0025

4
4150 S
02-SSP-0026

5
4192 S
02-SSP-0027

6
4230 S
02-SSP-0028

SEE SEPERATE PLATS FOR SPANISH VALLEY ESTATES PHASES 1-3

SEE SEPERATE PLAT FOR VALLE DEL SOL SUBDIVISION

SEE SEPERATE PLAT FOR SPANISH VALLEY ESTATES ADDITION 1

BEEMAN ROAD

SPANISH VALLEY DRIVE

SPANISH VALLEY DRIVE

VALLE DEL SOL DRIVE

JESSICA DRIVE

S 89°54'51.2"E 1324.34'

S 00°04'20.8"W 1324.58'

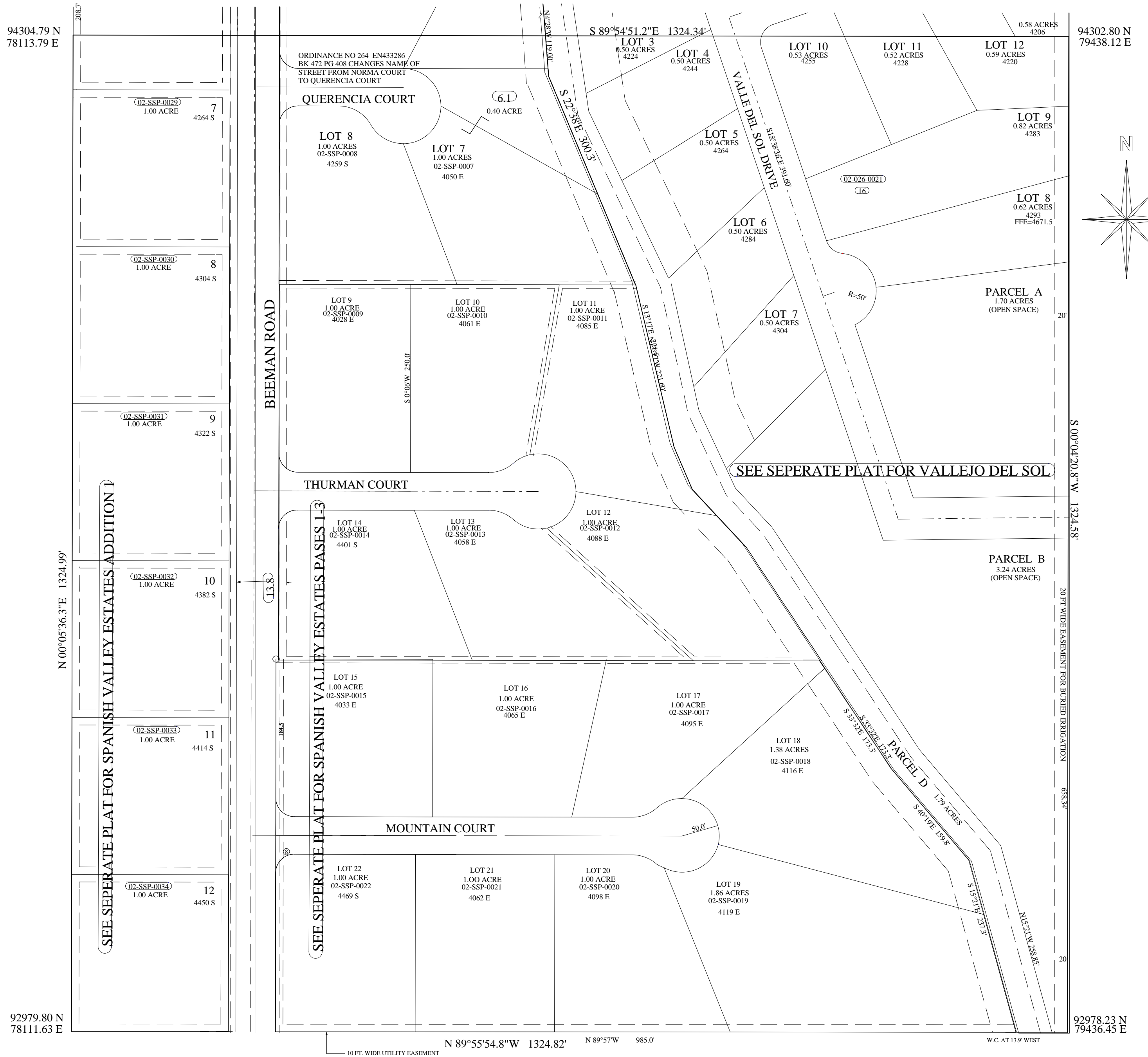
N 00°05'36.3"E 1324.99'

94304.79 N
78113.79 E

94302.80 N
79438.12 E

SW1/4SW1/4 SECTION 26 T26S R22E

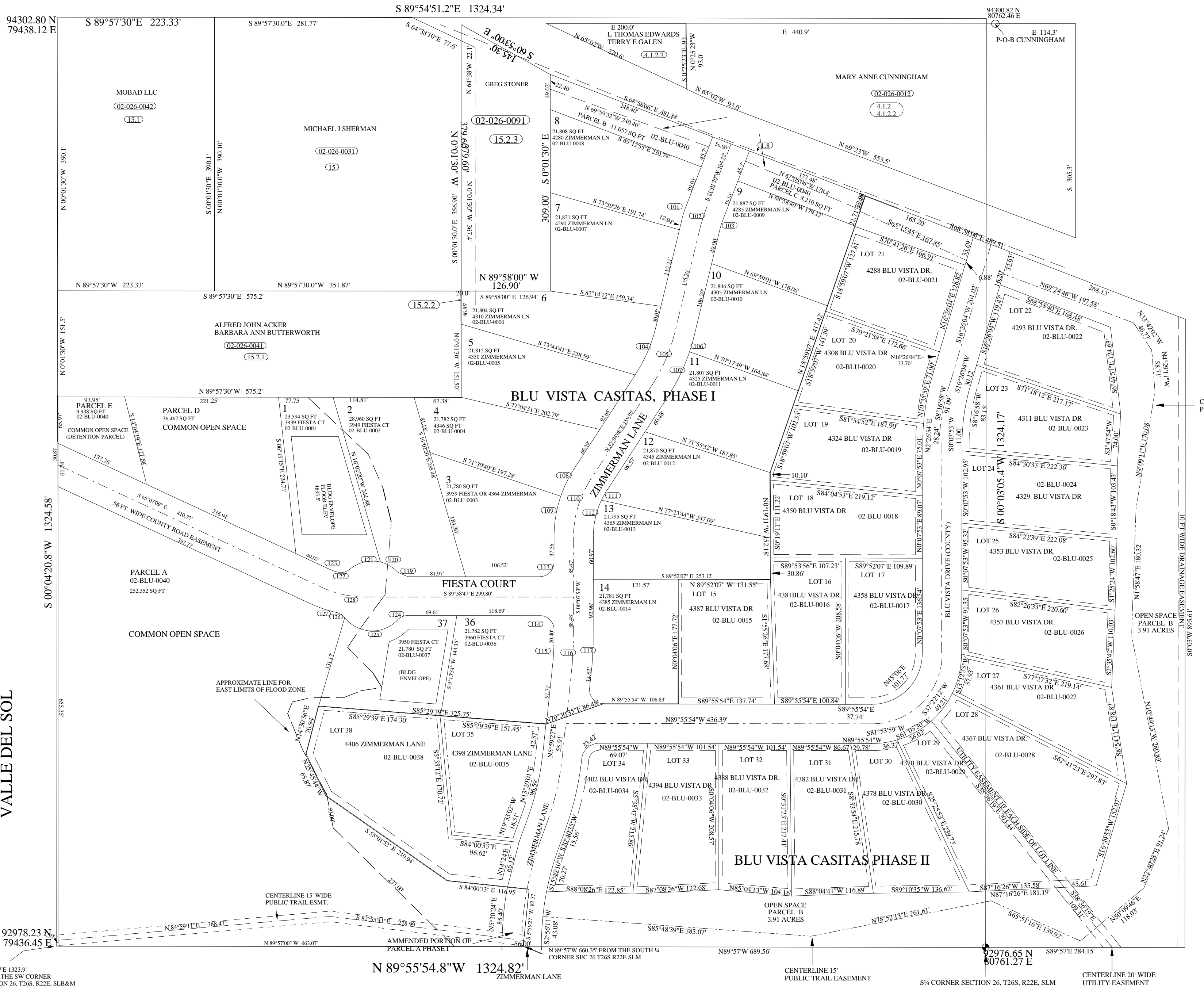
THIS PLAT IS FOR NAME CHANGE RECORDS ONLY
SEE OFFICIAL PLAT FOR ALL OTHER PURPOSES



SE 1/4 SW 1/4 SECTION 26 T 26 S R 22 E

SCALE: 1" = 100'

THIS PLAT IS DRAWN FROM THE PARCEL DESCRIPTIONS AND IS SOLELY FOR THE PURPOSE OF ASSISTING IN LOCATING THE LAND. THE RECORDER'S OFFICE ASSUMES NO LIABILITY FOR VARIATIONS IF ANY, WITH AN ON SITE SURVEY



P.O.B.
S 89°57'E 1323.9'
FROM THE SW CORNER
SECTION 26, T26S, R22E, SLB&M

N 89°55'54.8"W 1324.82'

CENTERLINE 15' PUBLIC TRAIL EASEMENT

S¼ CORNER SECTION 26, T26S, R22E, SLM

CENTERLINE 20' WIDE UTILITY EASEMENT

10 FT. WIDE DRAINAGE EASEMENT

NE1/4SE1/4 SECTION 26 T26S R22E SLB&M

SCALE: 1" = 100'

THIS PLAT IS MADE SOLELY FOR THE
PURPOSE OF ASSISTING IN LOCATING
THE LAND AND THE RECORDER ASSUMES
NO LIABILITY FOR VARIATIONS, IF ANY,
WITH AN ACTUAL SURVEY

N = 95622.60
E = 82089.14

N = 95620.21
E = 83414.63



LOT 1
35.54 AC
01-RDS-0001
4321 CHAPMAN LN

SEE SEPERATE PLAT FOR
REDSTONE SUBDIVISION

CHAPMAN LANE 1:51 AC (DEDICATION OF ROADWAY)

S89°54'E 1326.24'

50.0'

1158.97'

1256.01'

1005.861' W .00350.0' S

DETENTION BASIN TO BE MAINTAINED AND REPAIRED BY HOA

N89°53'E 79.88'

S0°03'W 85.00'

15' DRAINAGE AND UTILITY EASMENT

N0°03'E 100.00'

N 89°55'00" W 515.81'

15' WIDE 7.5' EACH SIDE OF LOT LINE UTILITY EASEMENT?

56' WIDE PRIVATE ACCESS TRACT S89°53'E 644.33'

LOT 3
10.61 AC
02-RDS-0003
4329 CHAPMAN LN

50.0'

(2.4) S 89°53'E 206.7' JOHN R. FOGG 02-026-0003

N 89°53'00" W 677.70' (2.3)

JOHN R. FOGG 02-026-0002

S 89°54'51.0"E 1325.16'

LOT 2
1.06 AC
02-RDS-0002
4325 CHAPMAN

N26°47'01"W 29.12' EASEMENT SOUTH 250.09'

15' WIDE UTILITY EASEMENT

250.09'

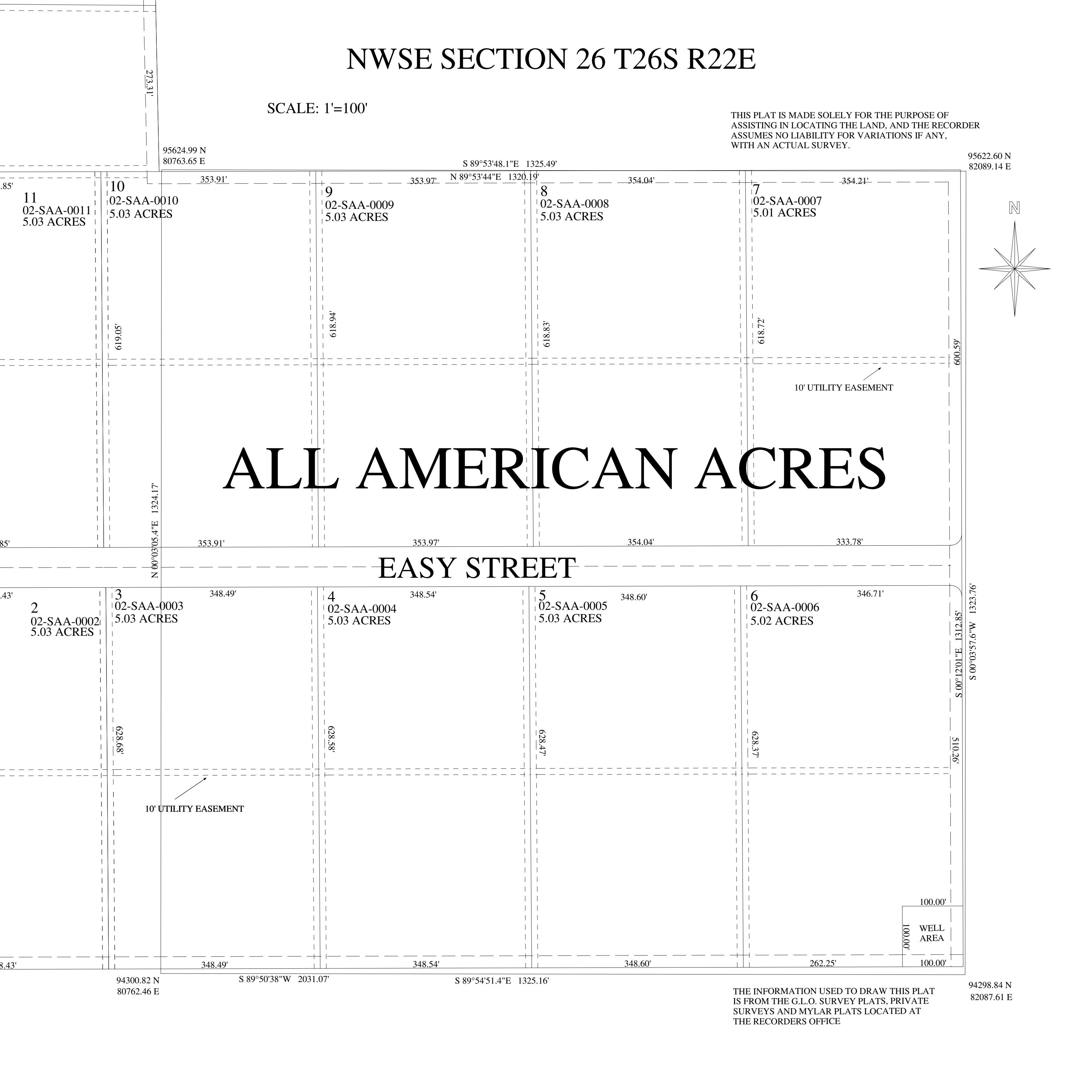
N = 94298.84
E = 80288.02

N = 94296.86
E = 83412.77

NWSE SECTION 26 T26S R22E

SCALE: 1'=100'

THIS PLAT IS MADE SOLELY FOR THE PURPOSE OF ASSISTING IN LOCATING THE LAND, AND THE RECORDER ASSUMES NO LIABILITY FOR VARIATIONS IF ANY, WITH AN ACTUAL SURVEY.



95624.99 N
80763.65 E

S 89°53'48.1"E 1325.49'

95622.60 N
82089.14 E

11
02-SAA-0011
5.03 ACRES

10
02-SAA-0010
5.03 ACRES

9
02-SAA-0009
5.03 ACRES

8
02-SAA-0008
5.03 ACRES

7
02-SAA-0007
5.01 ACRES

619.05'

618.94'

618.819'

618.72'

600.59'

10' UTILITY EASEMENT

ALL AMERICAN ACRES

N 00°03'05.4"E 1324.17'

353.91'

353.97'

354.04'

333.78'

EASY STREET

2
02-SAA-0002
5.03 ACRES

3
02-SAA-0003
5.03 ACRES

4
02-SAA-0004
5.03 ACRES

5
02-SAA-0005
5.03 ACRES

6
02-SAA-0006
5.02 ACRES

628.68'

628.58'

628.47'

628.37'

510.26'

10' UTILITY EASEMENT

100.00'
100.00'
WELL
AREA

94300.82 N
80762.46 E

S 89°50'38"W 2031.07'

S 89°54'51.4"E 1325.16'

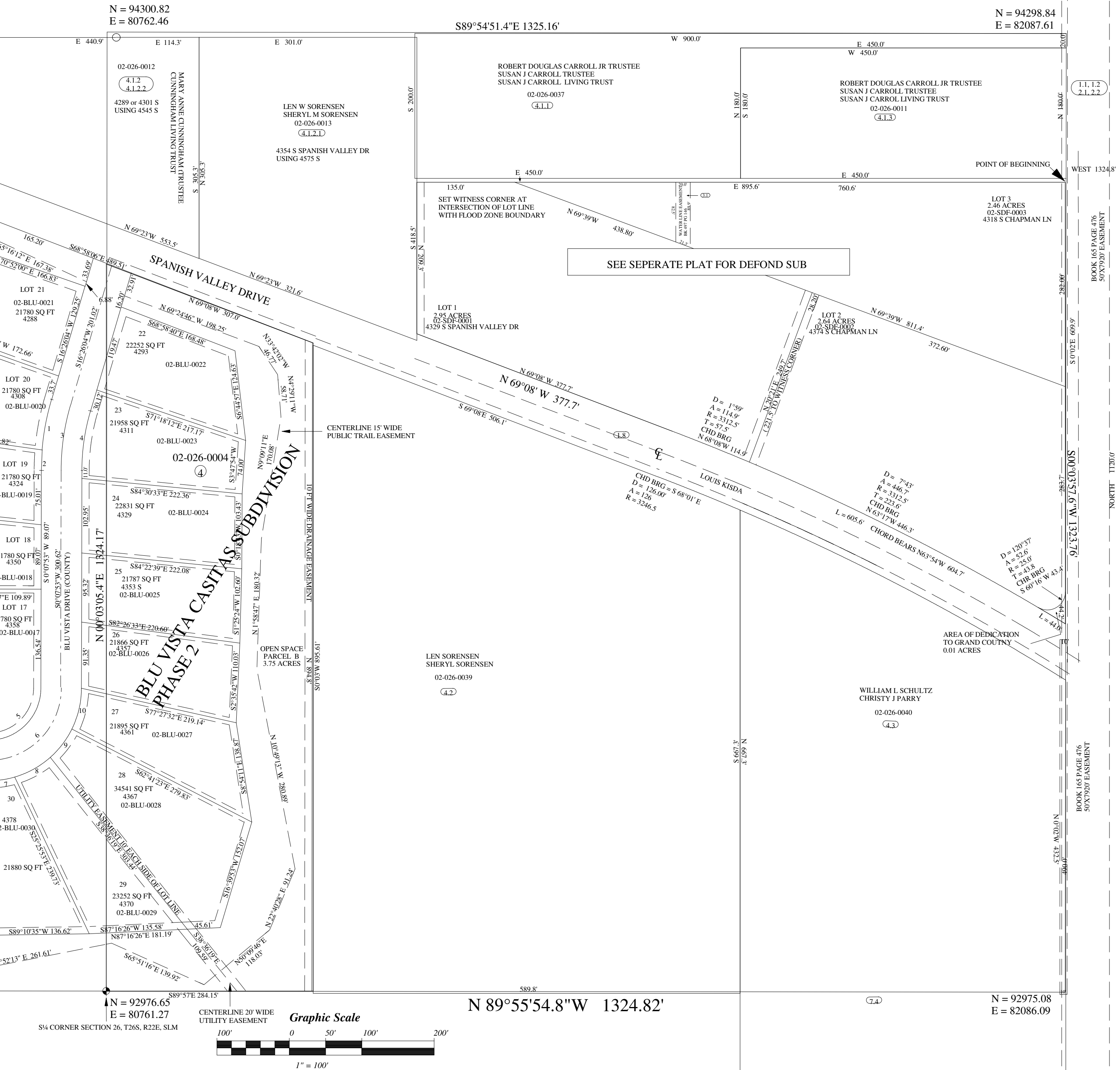
THE INFORMATION USED TO DRAW THIS PLAT IS FROM THE G.L.O. SURVEY PLATS, PRIVATE SURVEYS AND MYLAR PLATS LOCATED AT THE RECORDERS OFFICE

94298.84 N
82087.61 E

SW1/4 SE1/4 SECTION 26 T26S R22E

SCALE: 1" = 100'

THIS PLAT IS DRAWN FROM THE PARCEL DESCRIPTIONS AND IS SOLELY FOR THE PURPOSE OF ASSISTING IN LOCATING THE LAND. THE RECORDER'S OFFICE ASSUMES NO LIABILITY FOR VARIATIONS IF ANY, WITH AN ON SITE SURVEY.



THE LAND. THE RECORDER'S OFFICE ASSUMES
NO LIABILITY FOR VARIATIONS IF ANY,
WITH AN ON SITE SURVEY

SE1/4SE1/4 SECTION 26 T 26S R 22 E

SCALE: 1" = 100'

N = 94298.84
E = 82087.61

N = 94296.86
E = 83412.77

826.23'

89°199'N, 64°70.00S

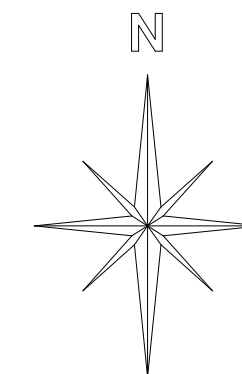
S 00°04'49.9"W 1323.36'

20°56'31.00S

N 0°01'00"W 364.80'

SE COR SEC 26

N = 92973.50
E = 83410.91



S 00°03'57.6"W 1323.76'

50' X 7920' BK 165 PG 476 CHAPMAN LANE

N = 92975.08
E = 82086.09

N 89°55'54.8"W 1324.82'

