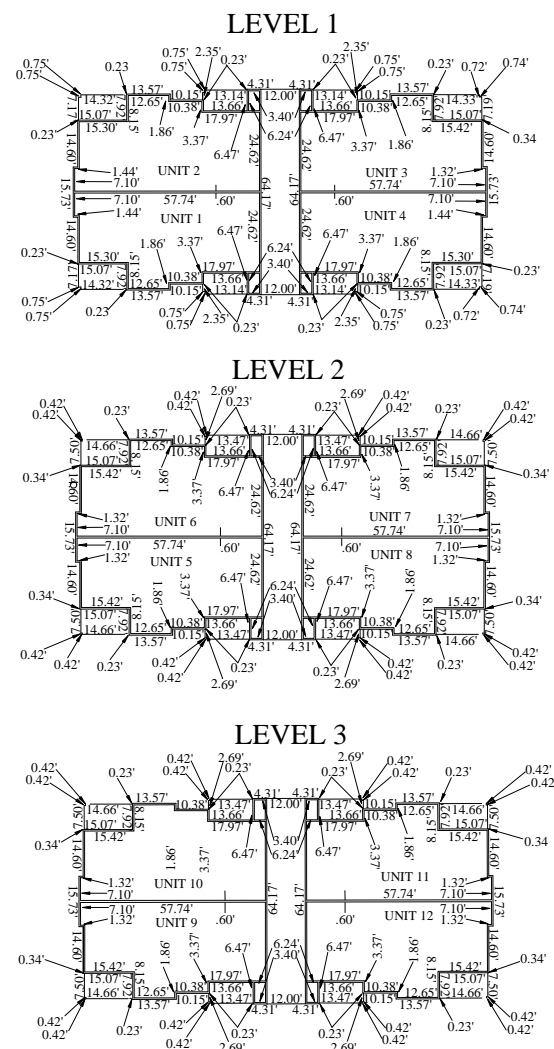
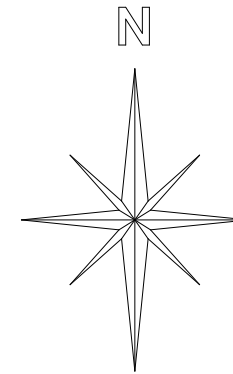


FIRST FLOOR

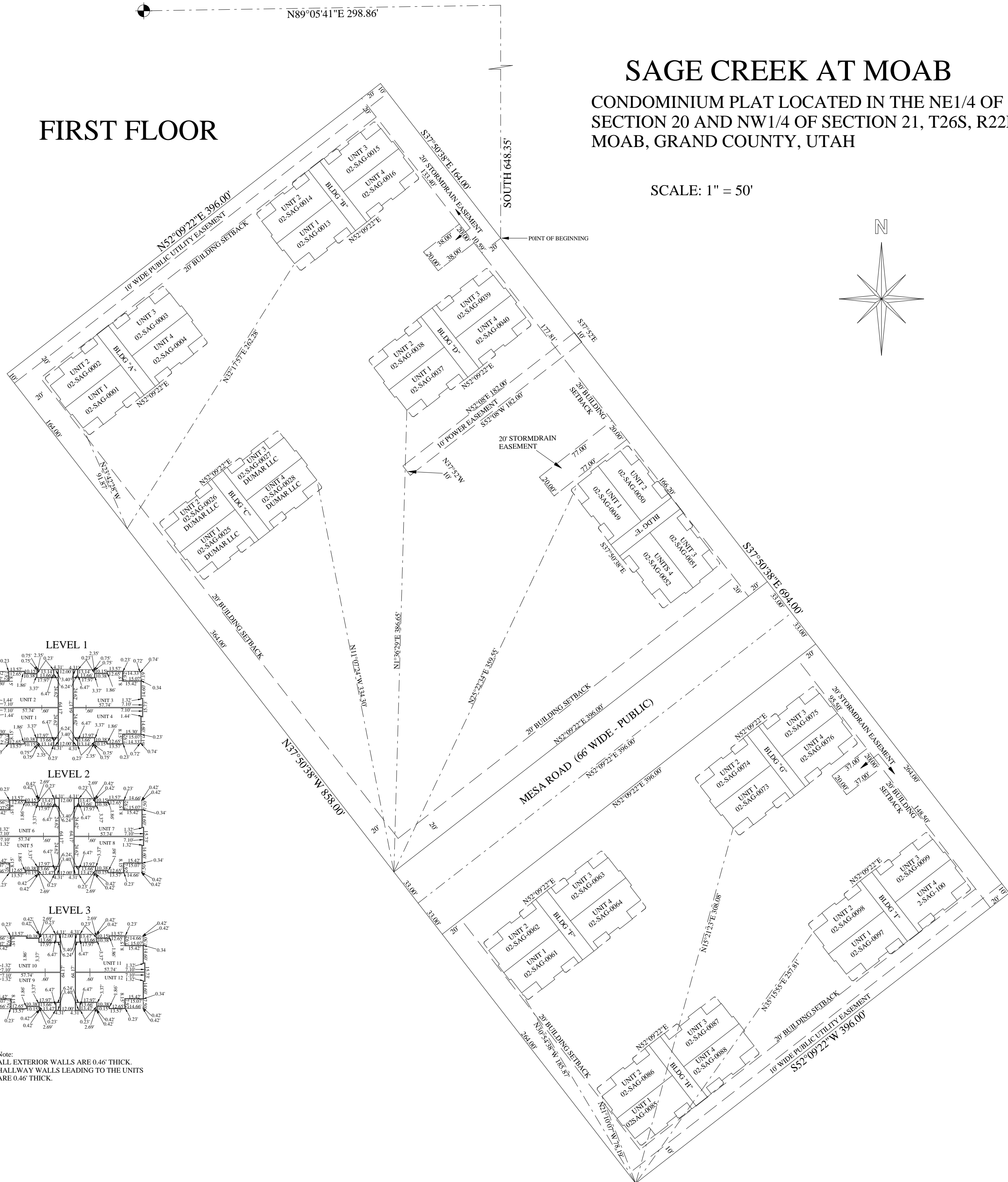
SAGE CREEK AT MOAB

CONDOMINIUM PLAT LOCATED IN THE NE1/4 OF SECTION 20 AND NW1/4 OF SECTION 21, T26S, R22E, SLB&M, MOAB, GRAND COUNTY, UTAH

SCALE: 1" = 50'



Note:
ALL EXTERIOR WALLS ARE 0.46' THICK.
HALLWAY WALLS LEADING TO THE UNITS
ARE 0.46' THICK.

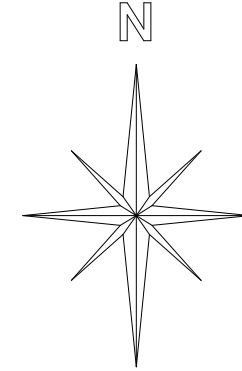


SECOND FLOOR

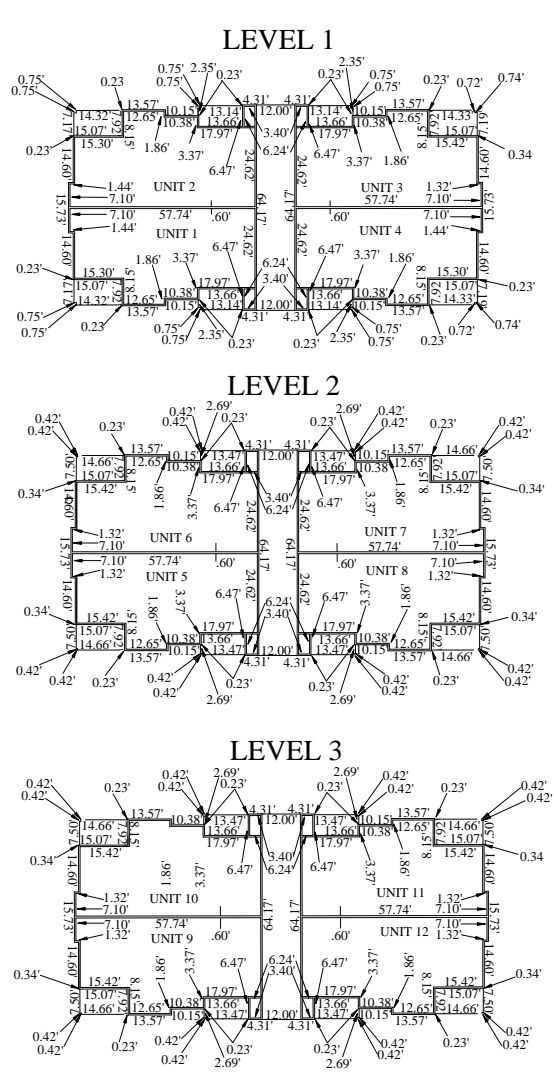
SAGE CREEK AT MOAB

CONDOMINIUM PLAT LOCATED IN THE NE1/4 OF SECTION 20 AND NW1/4 OF SECTION 21, T26S, R22E, SLB&M, MOAB, GRAND COUNTY, UTAH

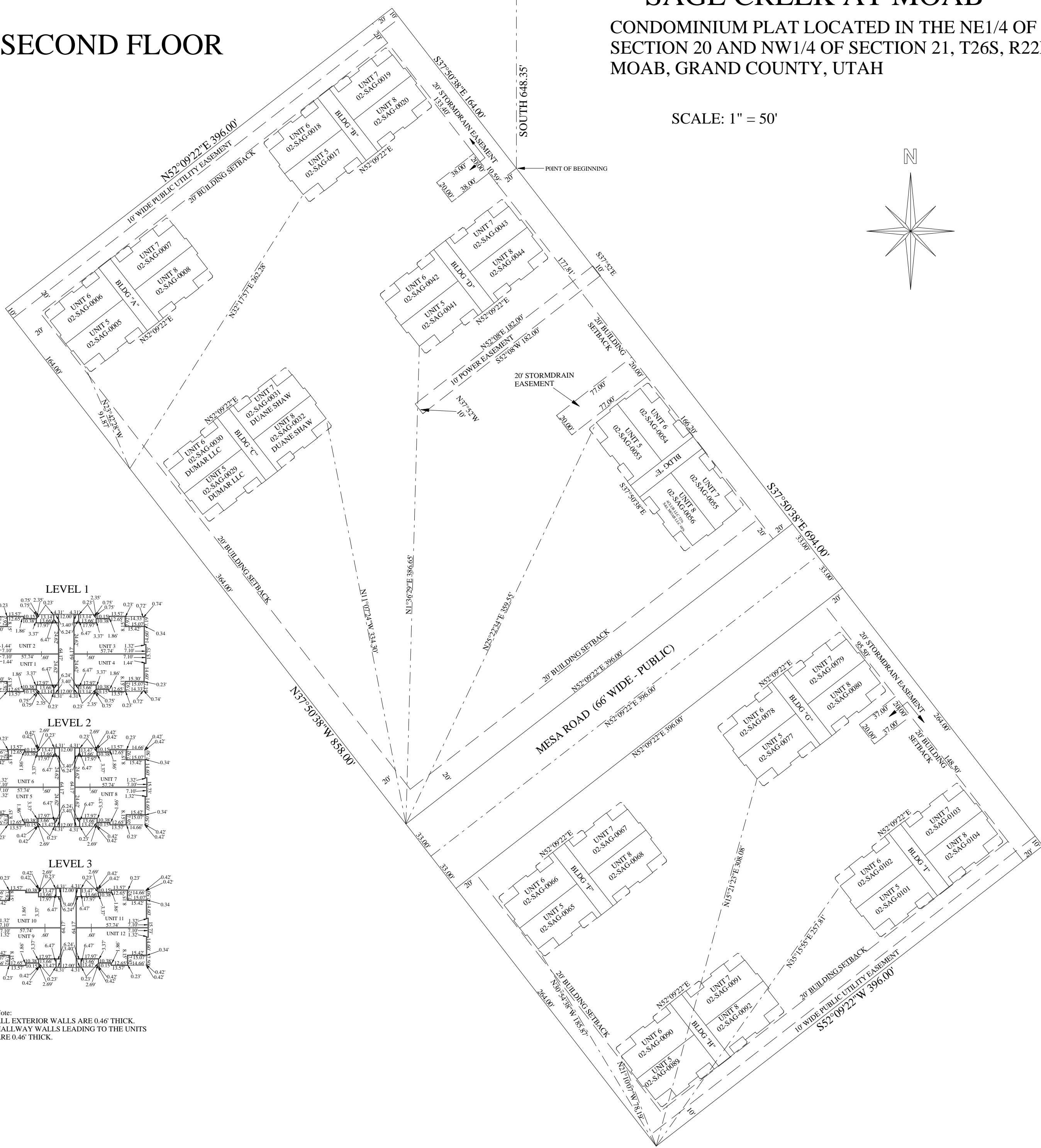
SCALE: 1" = 50'



N89°05'41"E 298.86'



Note:
ALL EXTERIOR WALLS ARE 0.46' THICK.
HALLWAY WALLS LEADING TO THE UNITS
ARE 0.46' THICK.

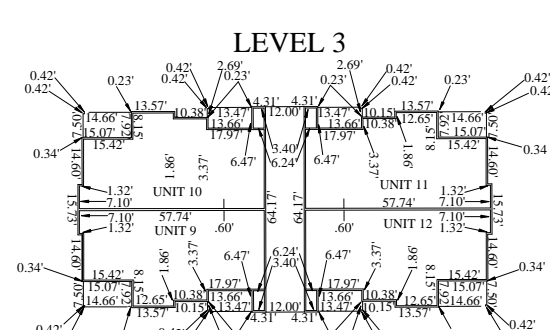
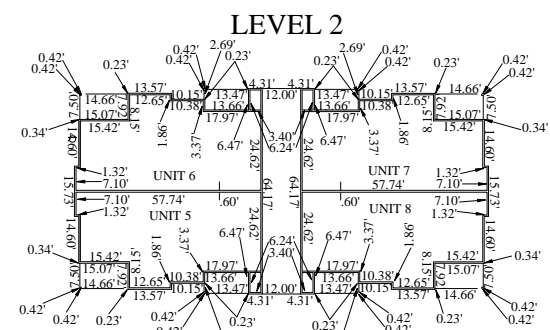
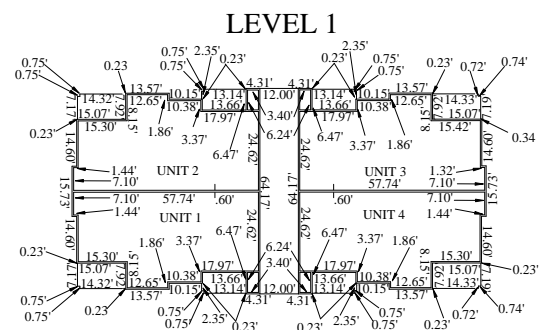
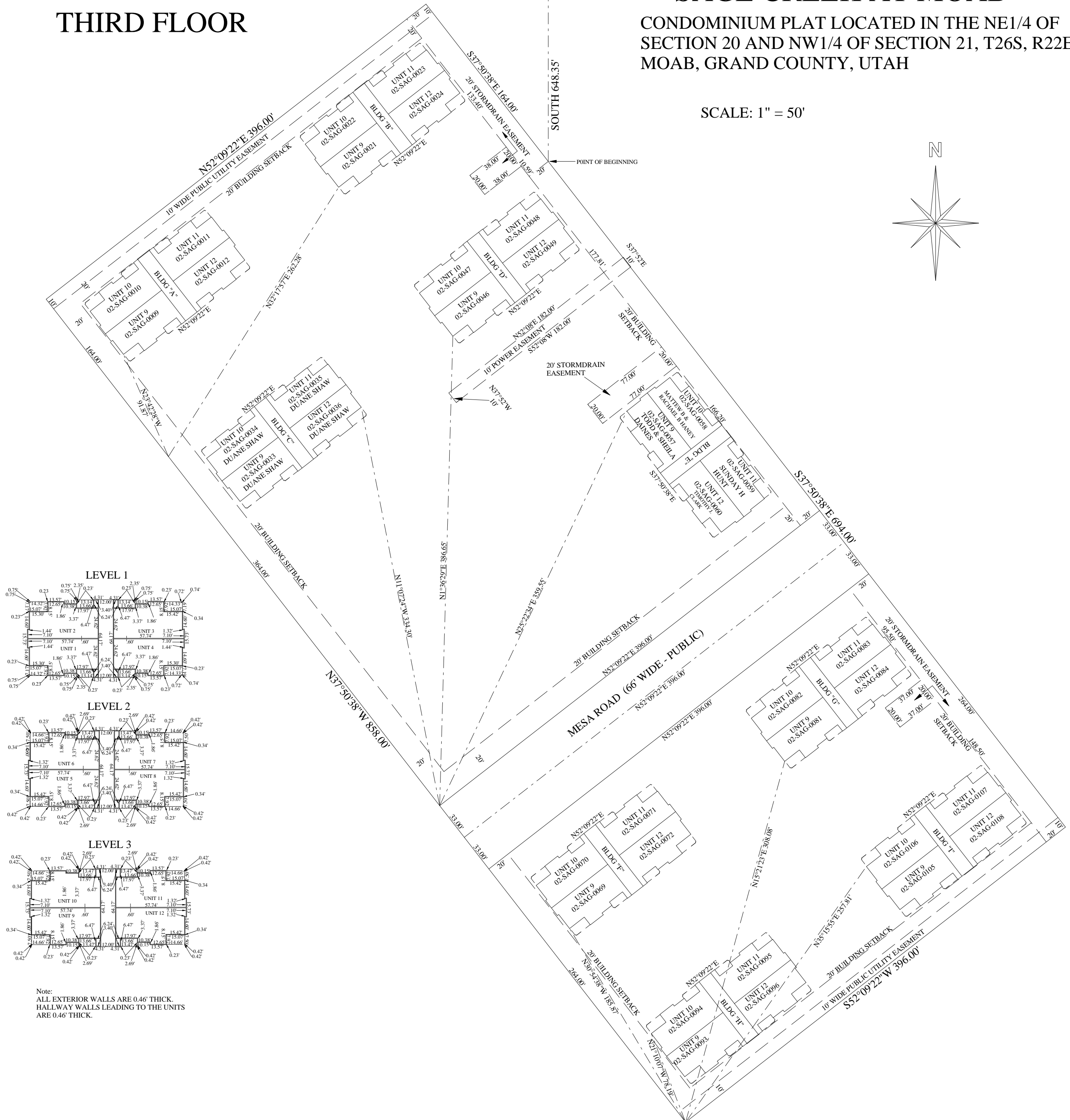
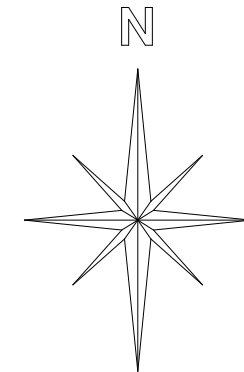


THIRD FLOOR

SAGE CREEK AT MOAB

CONDOMINIUM PLAT LOCATED IN THE NE1/4 OF SECTION 20 AND NW1/4 OF SECTION 21, T26S, R22E, SLB&M, MOAB, GRAND COUNTY, UTAH

SCALE: 1" = 50'



Note:
ALL EXTERIOR WALLS ARE 0.46' THICK.
HALLWAY WALLS LEADING TO THE UNITS
ARE 0.46' THICK.