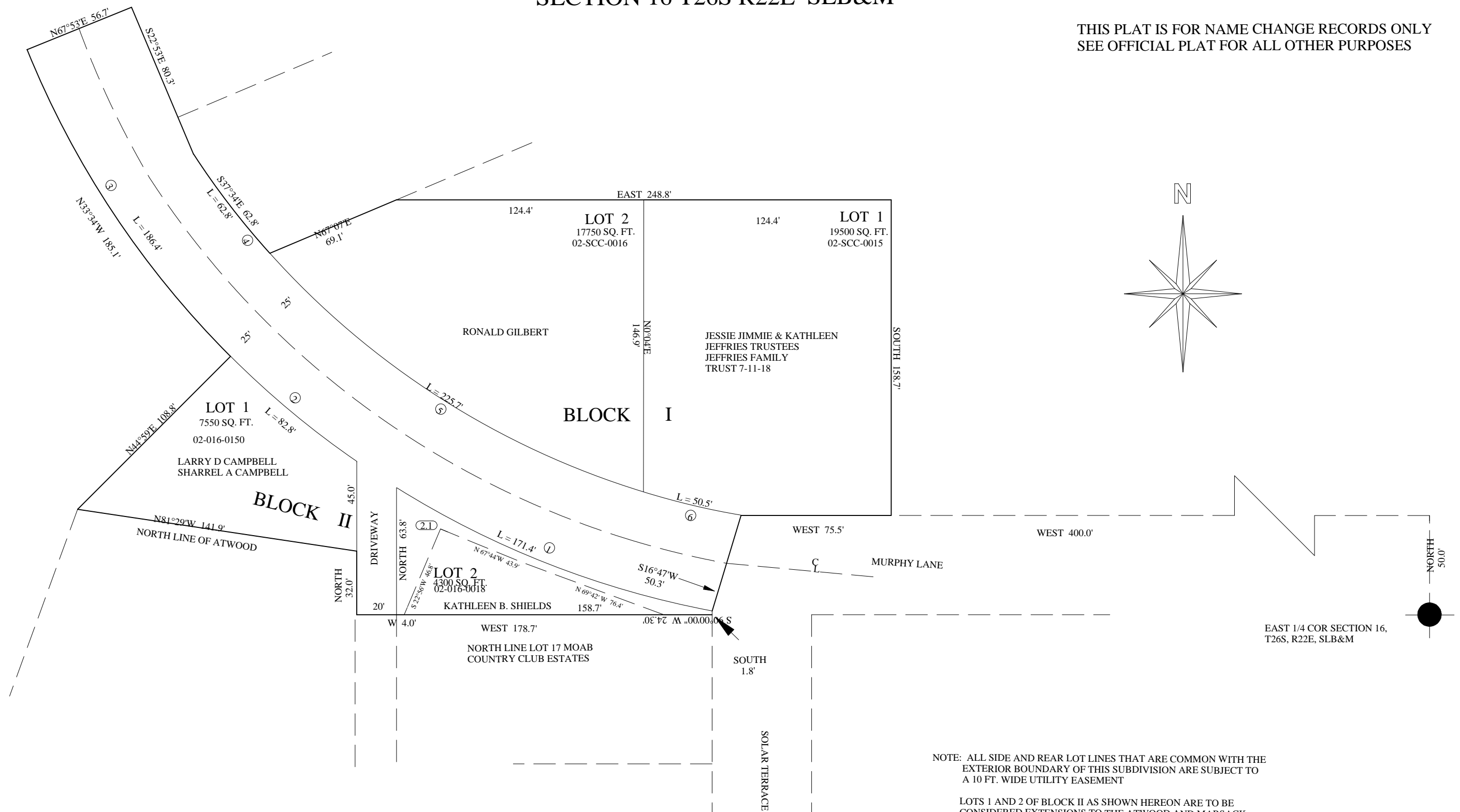


MOAB COUNTRY CLUB ESTATES, AMMENDED

SECTION 16 T26S R22E SLB&M

THIS PLAT IS FOR NAME CHANGE RECORDS ONLY
SEE OFFICIAL PLAT FOR ALL OTHER PURPOSES

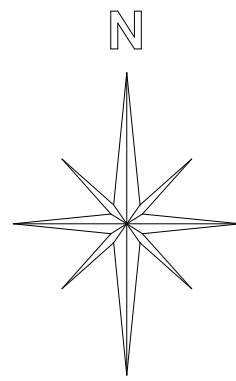


CURVE	RADIUS	LENGHT	TANGENT	CHORD	BEARING	DELTA
1	466.1'	171.4'	86.7'	170.4'	S66°40'E	21°04'
2	466.1'	82.8'	41.5'	82.6'	S50°06'E	10°10'
3	466.1'	186.4'	94.5'	185.1'	S33°34'E	22°55'
4	416.1'	62.8'	31.5'	62.8'	S37°34'E	08°39'
5	416.1'	225.7'	115.7'	222.9'	S57°26'E	31°04'
6	416.1'	50.5'	25.3'	50.5'	S76°26'E	06°57'

MOAB COUNTRY CLUB ESTATES LOTS 6 & 7 AMENDED

A REPLAT OF LOTS 6 & 7 OF MOAB COUNTRY CLUB ESTATES
IN SECTION 16, T26S, R22E, SLM, GRAND COUNTY, UTAH

SCALE: 1"=30'



THIS PLAT IS FOR NAME CHANGE RECORDS ONLY
SEE OFFICIAL PLAT FOR ALL OTHER PURPOSES

