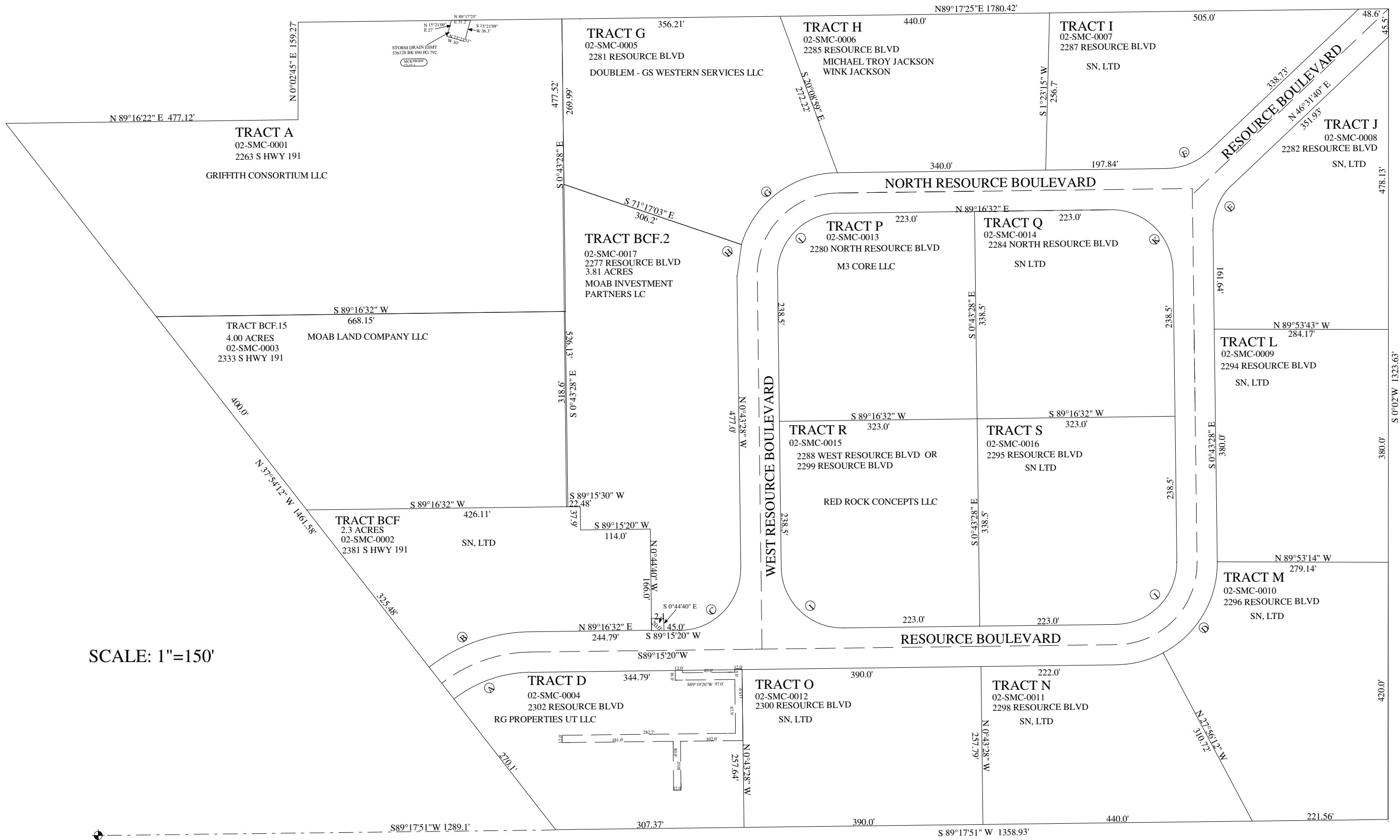


McKNIGHT PROPERTIES INDUSTRIAL SUB-DIVISION

WITHIN SE1/4 OF SECTION 17, T26S, R22E. GRAND COUNTY, UTAH



SCALE: 1"=150'

NOTE:
10' UTILITY EASEMENT ON ALL BOUNDARY LINES
10' UTILITY EASEMENT ON ALL INTERIOR LOT BOUNDARIES