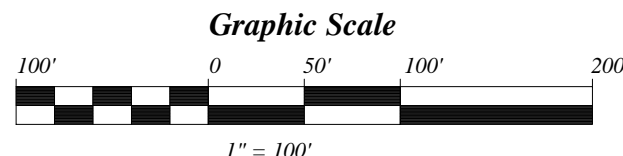
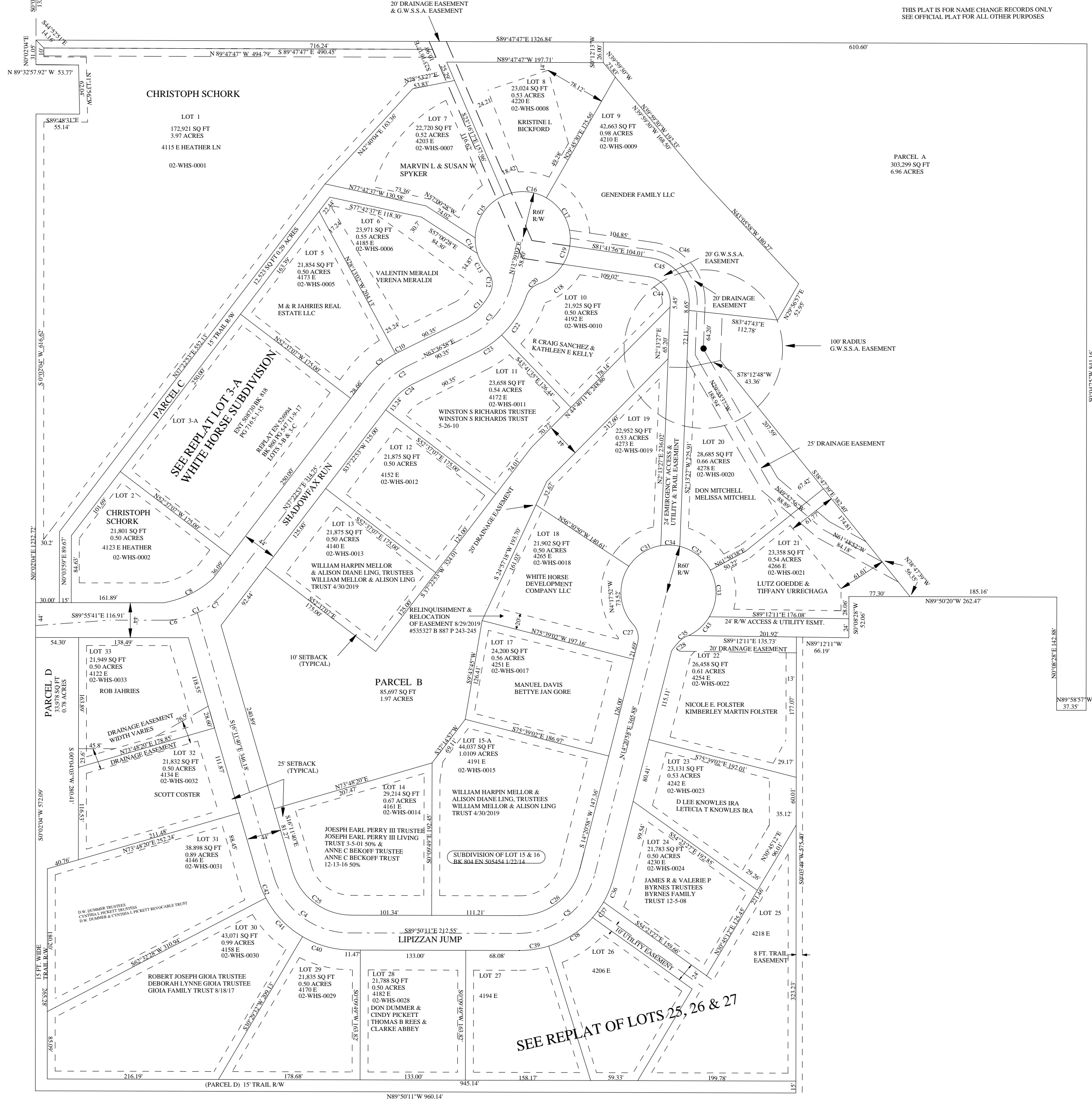
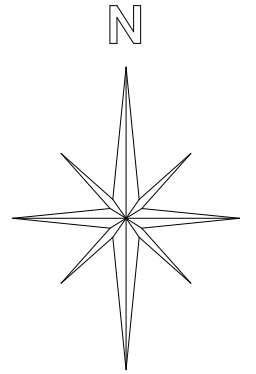


# WHITE HORSE SUBDIVISION

A PLANNED UNIT DEVELOPMENT WITHIN THE SWNE OF SECTION 26, T26S, R22E, SLM

THIS PLAT IS FOR NAME CHANGE RECORDS ONLY  
SEE OFFICIAL PLAT FOR ALL OTHER PURPOSES



SEE ORIGINAL PLAT  
FOR PLAT NOTES

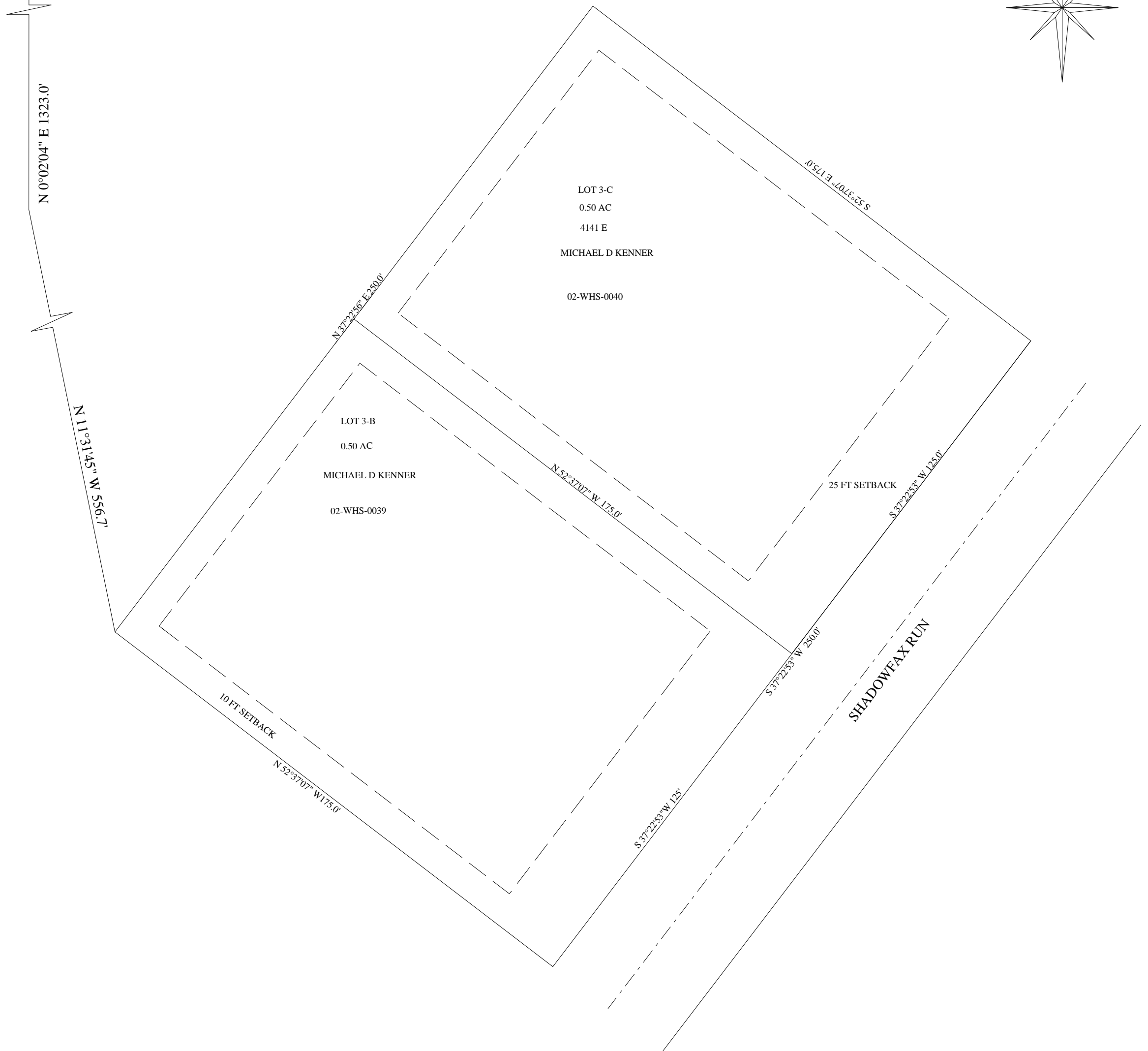
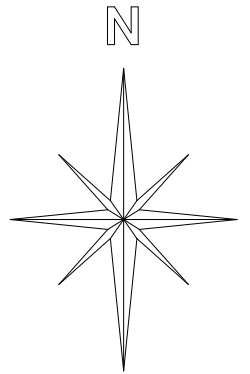
# A REPLAT OF LOT 3-A, WHITE HORSE SUBDIVISION

WITHIN SECTION 26, T26S, R22E, SLM GRAND COUNTY UTAH

N/4 SECTION 26 T26S R22E SLM



SCALE; 1"=30'

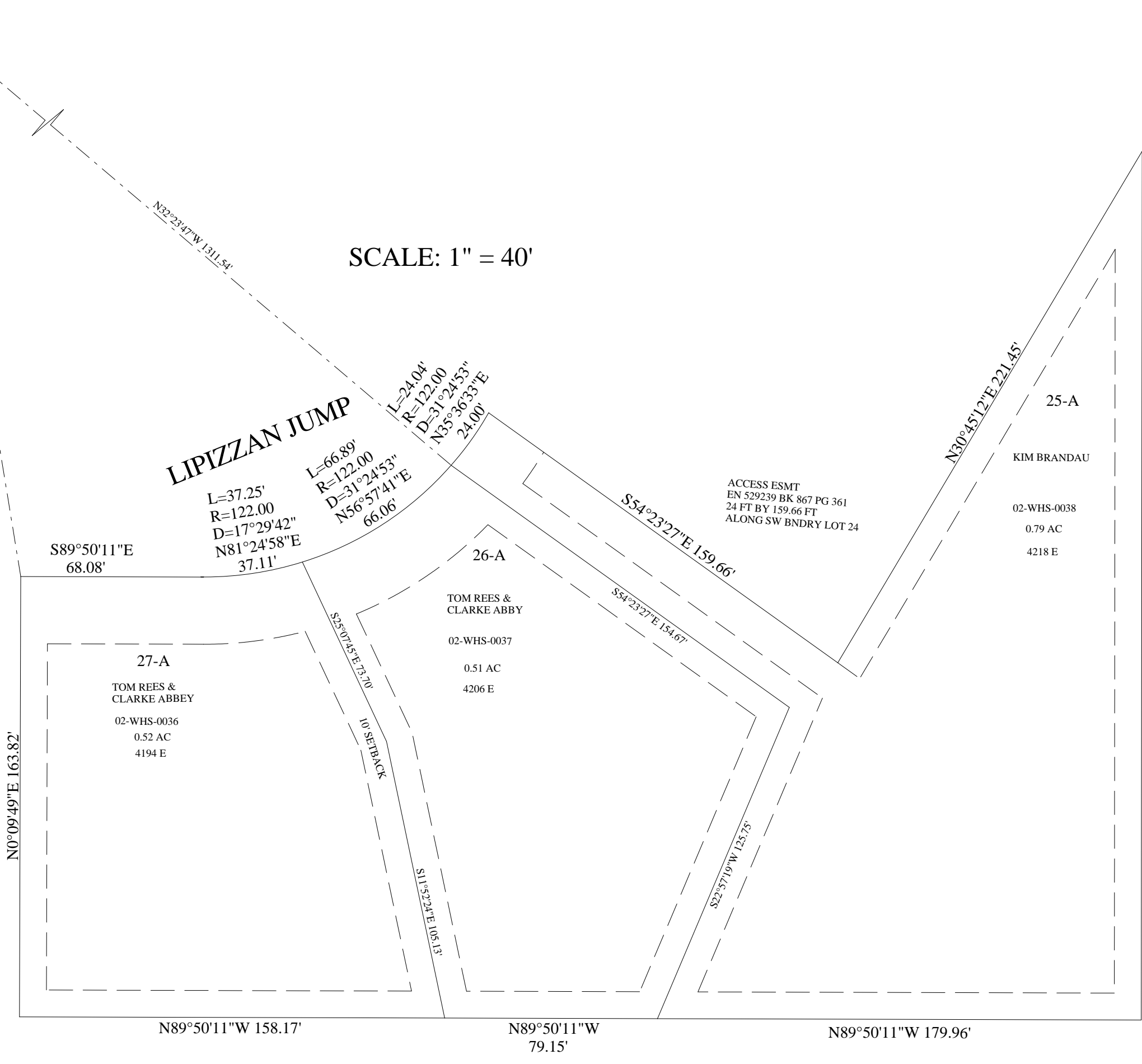
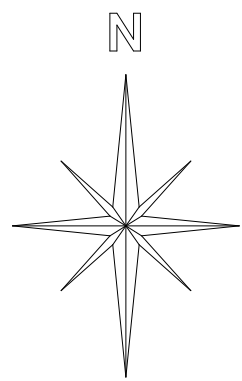


A REPLAT OF  
**LOTS 27A, 26A AND 25A,**  
**WHITE HORSE SUBDIVISION**  
 WITHIN SECTION 26, T26S, R22E, SLM, GRAND COUNTY, UTAH



S 0°02'04" W 1323.03'

SCALE: 1" = 40'



**27-A**  
 TOM REES &  
 CLARKE ABBEY  
 02-WHS-0036  
 0.52 AC  
 4194 E

**26-A**  
 TOM REES &  
 CLARKE ABBY  
 02-WHS-0037  
 0.51 AC  
 4206 E

**25-A**  
 KIM BRANDAU  
 02-WHS-0038  
 0.79 AC  
 4218 E

N0°09'49"E 163.82'

S89°50'11"E  
 68.08'

L=37.25'  
 R=122.00  
 D=17°29'42"  
 N81°24'58"E  
 37.11'

L=66.89'  
 R=122.00  
 D=31°24'53"  
 N56°57'41"E  
 66.06'

L=24.04'  
 R=122.00  
 D=31°24'53"  
 N35°56'33"E  
 24.00'

**LIPIZZAN JUMP**

S25°07'45"E 13.70'  
 10' SETBACK

S11°52'24"E 106.13'

S54°23'27"E 159.66'  
 ACCESS ESMT  
 EN 529239 BK 867 PG 361  
 24 FT BY 159.66 FT  
 ALONG SW BNDRY LOT 24

S4°23'27"E 154.67'

S22°57'19"W 123.75'

N30°45'12"E 221.45'

S0°03'49"W 323.23'

N89°50'11"W 158.17'

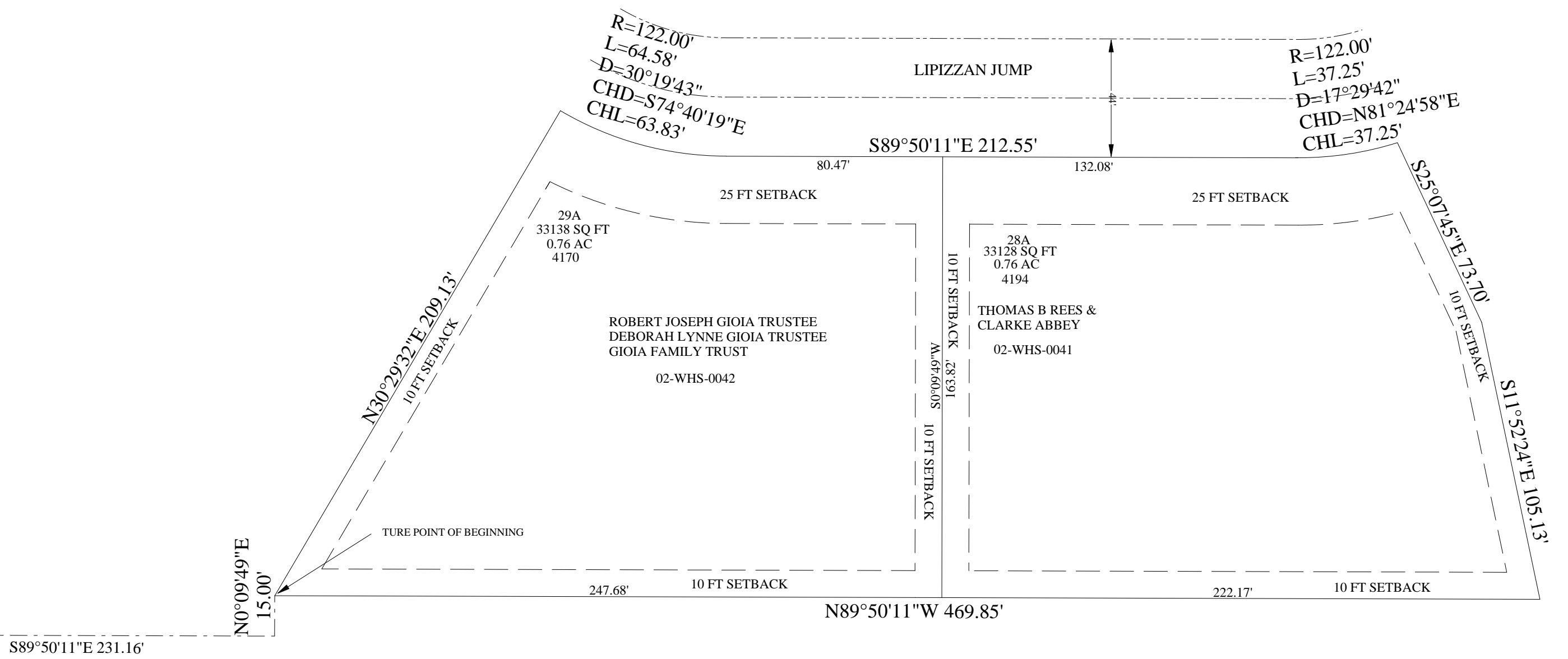
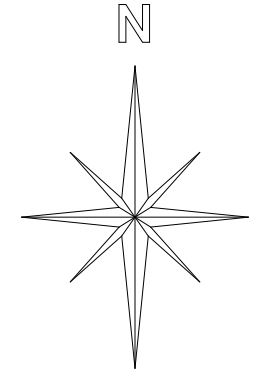
N89°50'11"W  
 79.15'

N89°50'11"W 179.96'

# LOTS 28A AND 29A OF WHITE HORSE SUBDIVISION

WITHIN SECTION 26, T26S, R22E, SLM, GRAND COUNTY, UTAH

SCALE: 1"=40'



# LOTS 23A AND 24A, WHITE HORSE SUBDIVISION

WITHIN SECTION 26, T26S, R22E, SLM, GRAND COUNTY, UTAH

SCALE: 1" = 30'

