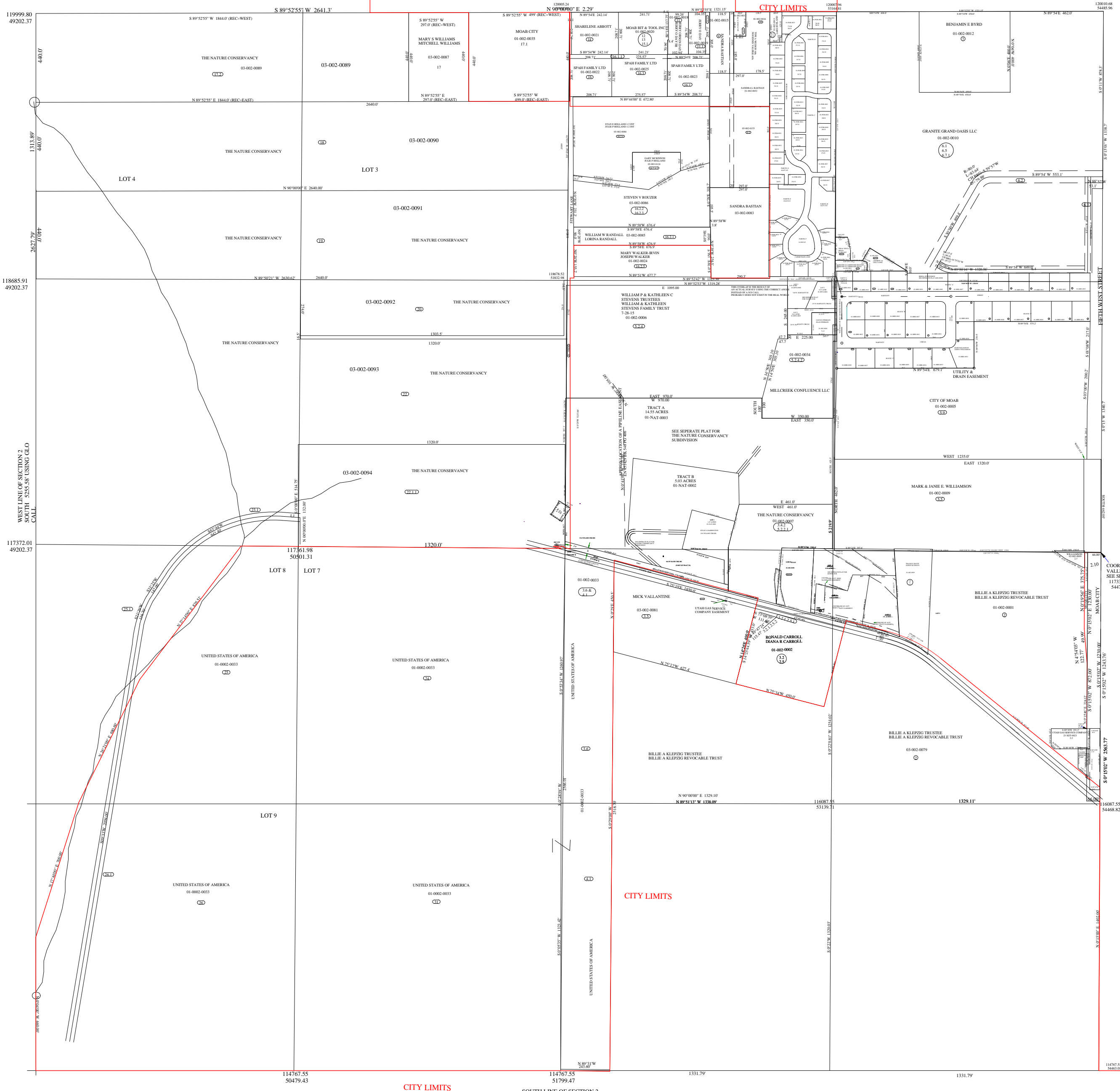


SECTION 2 T26S R21E

CITY LIMITS

THIS PLAT IS MADE SOLELY FOR THE PURPOSES OF ASSISTING IN LOCATING THE LAND, AND THE RECORDER'S OFFICE ASSUMES NO LIABILITY FOR VARIATIONS IF ANY, WITH AN ACTUAL SURVEY.



CITY LIMITS

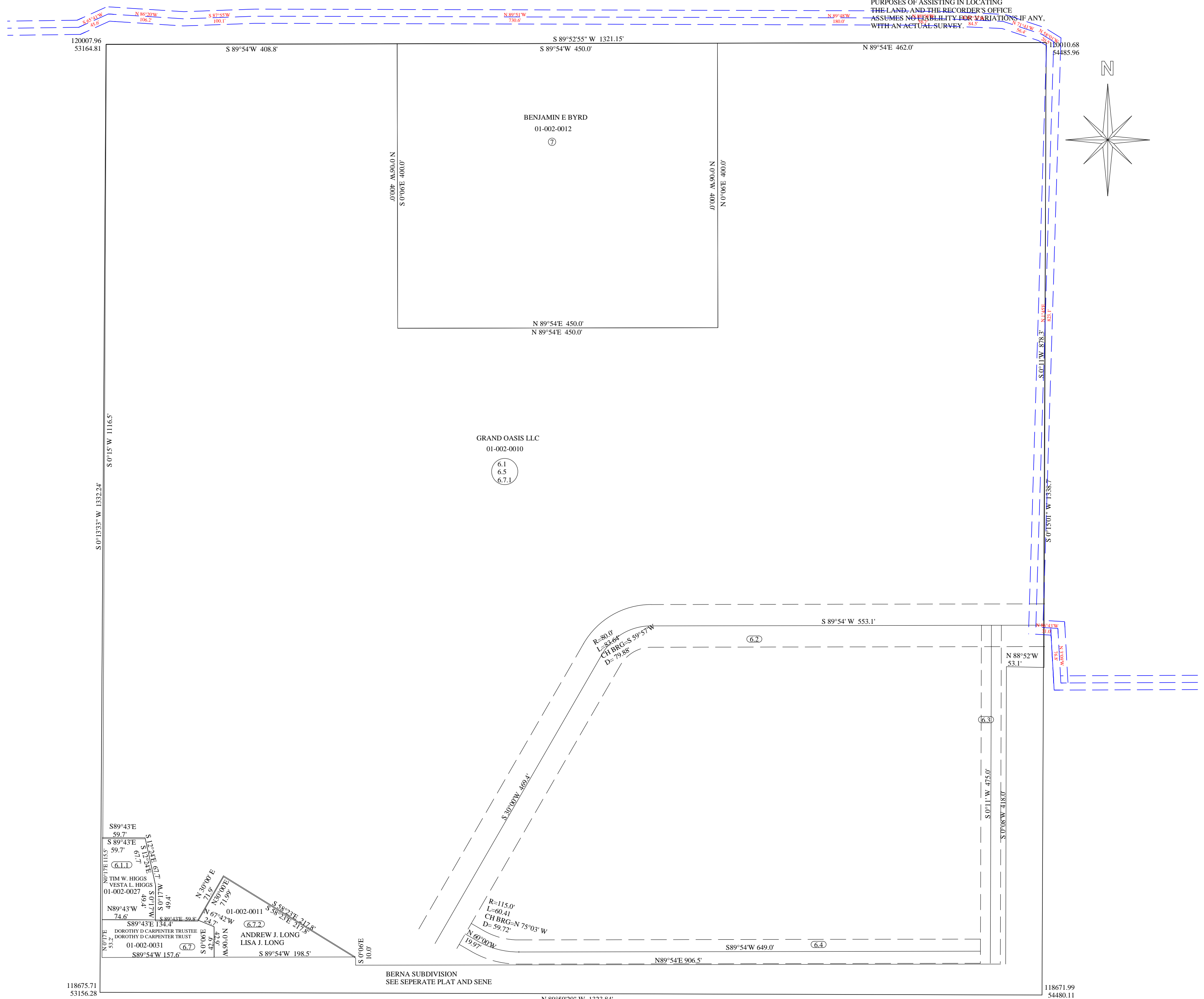
SOUTH LINE OF SECTION 2 5265.48' WEST GLO MAP

CITY LIMITS

LOT 1 (NE 1/4 NE 1/4) SECTION 2 T26S R21E

SCALE: 1" = 100'

THIS PLAT IS MADE SOLELY FOR THE PURPOSES OF ASSISTING IN LOCATING THE LAND, AND THE RECORDER'S OFFICE ASSUMES NO LIABILITY FOR VARIATIONS IF ANY, WITH AN ACTUAL SURVEY.



THE INFORMATION USED TO DRAW THIS PLAT IS FROM THE G.L.O. SURVEY PLATS, PRIVATE SURVEYS AND MYLAR PLATS LOCATED AT THE RECORDERS OFFICE.

NW 1/4 NE1/4 (LOT 2) SECTION 2 T26S R21E

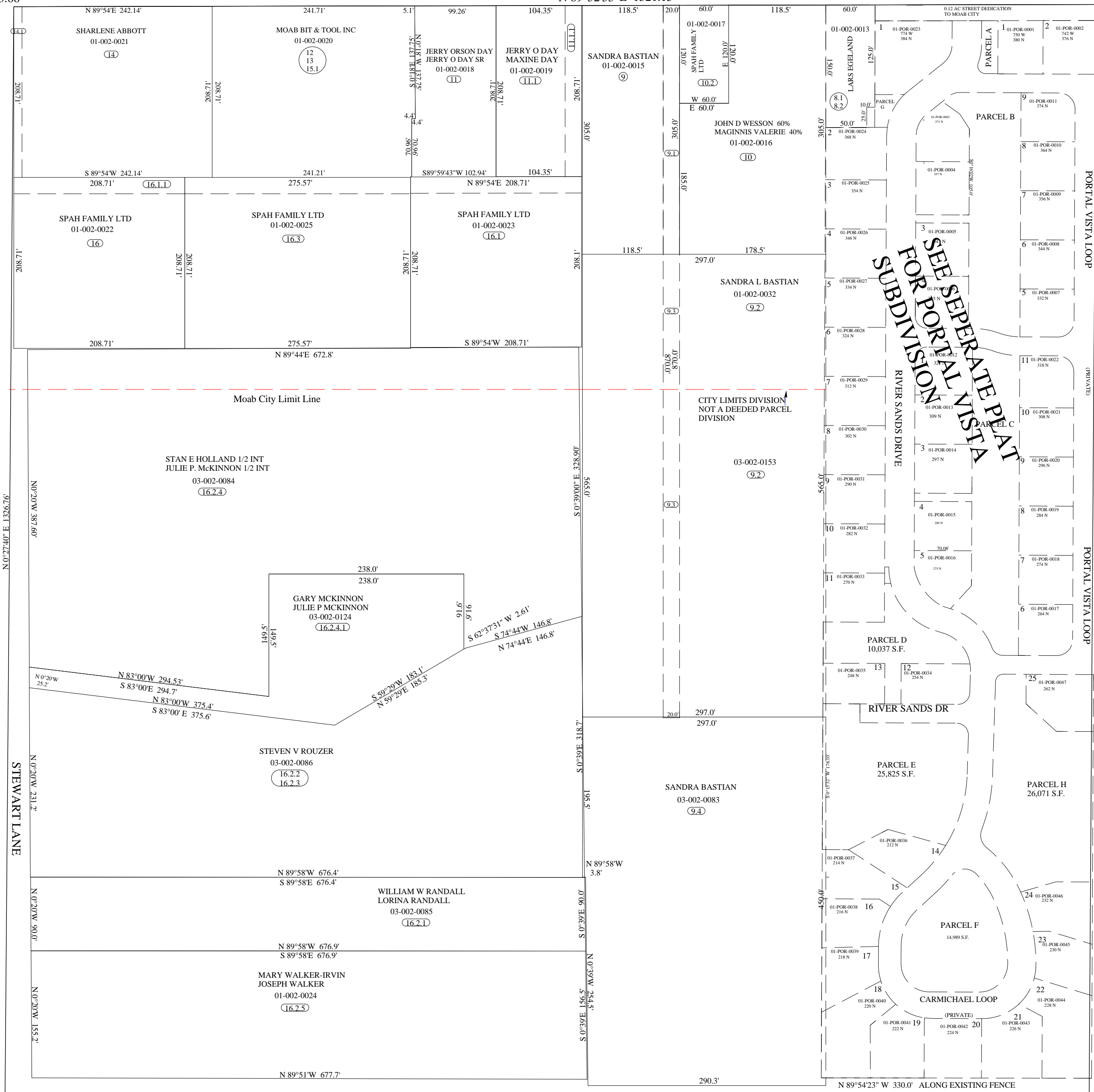
SCALE: 1" = 100'

THIS PLAT IS MADE SOLELY FOR THE PURPOSES OF ASSISTING IN LOCATING THE LAND, AND THE RECORDER'S OFFICE ASSUMES NO LIABILITY FOR VARIATIONS IF ANY, WITH AN ACTUAL SURVEY.

MOAB IRRIGATION DITCH 2 6/3/15
E# 508949 B 819 P 661

120005.24
51843.66

120007.96
53164.81



118678.52
51832.98

THE INFORMATION USED TO DRAW THIS PLAT IS FROM THE G.L.O. SURVEY PLATS, PRIVATE SURVEYS AND MYLAR PLATS LOCATED AT THE RECORDERS OFFICE

N 89°52'42" W 1323.30'

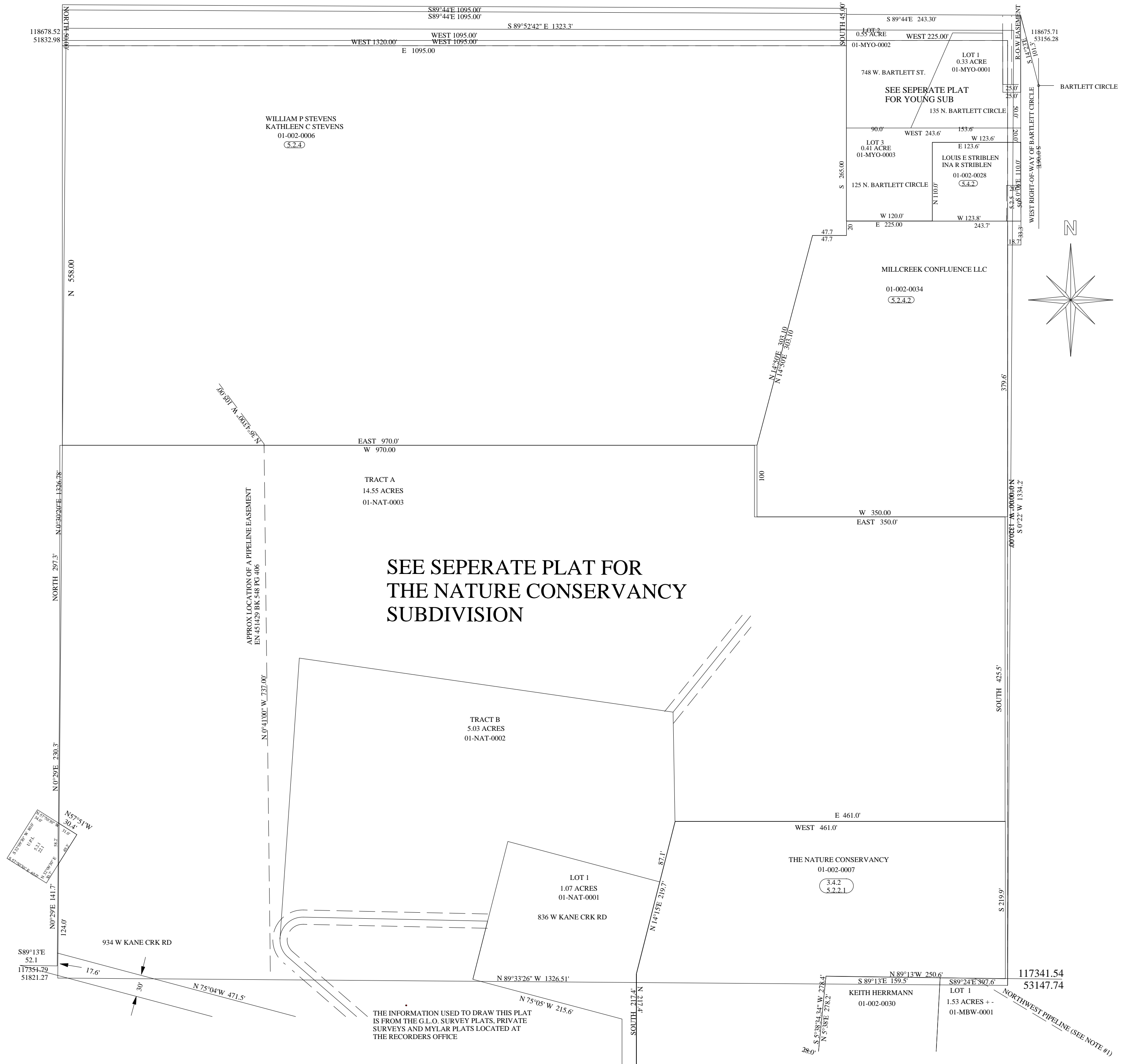
THIS OVERLAP IS THE RESULT OF AN ACTUAL SURVEY USING THE CORRECT ANGLE INSTEAD OF A N/S CALL PROBABLY DOES NOT EXIST IN THE REAL WORLD

118675.71
53156.28

SW1/4 NE1/4 SECTION 2 T26S R21E

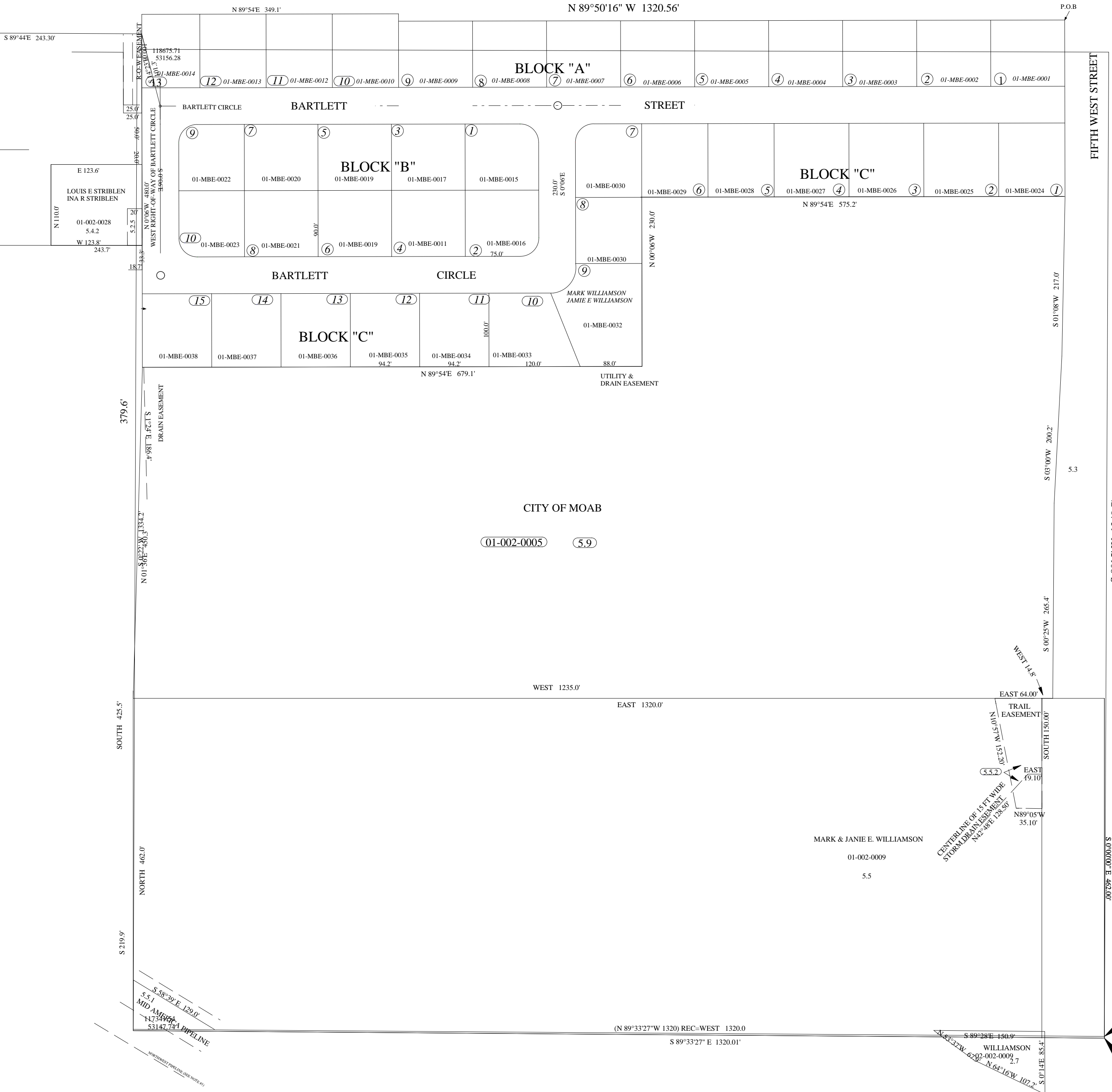
SCALE: 1" = 100'

THIS PLAT IS MADE SOLELY FOR THE PURPOSES OF ASSISTING IN LOCATING THE LAND, AND THE RECORDER'S OFFICE ASSUMES NO LIABILITY FOR VARIATIONS IF ANY, WITH AN ACTUAL SURVEY.



SE 1/4 NE 14/ SECTION 2 T26S R21E

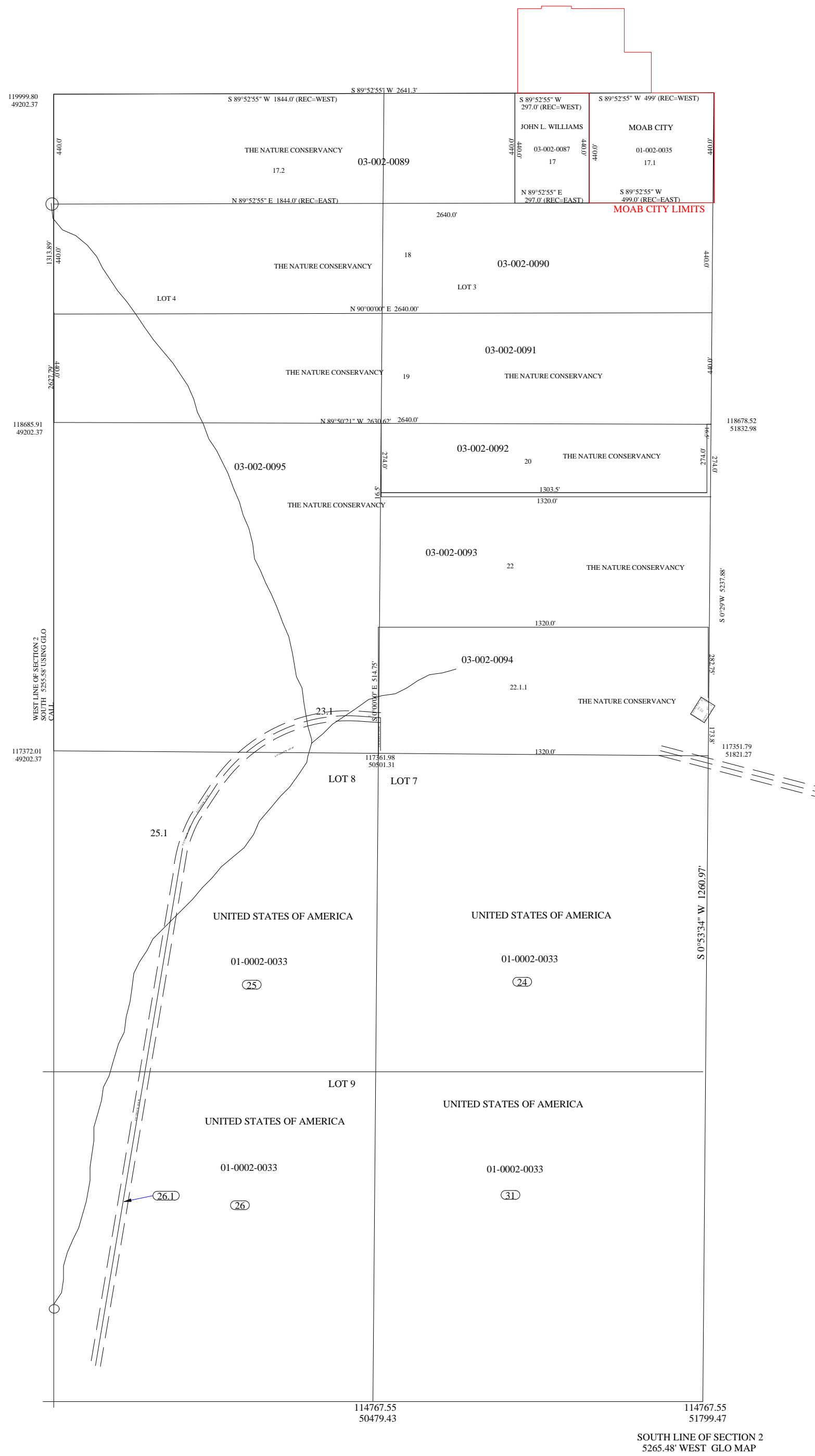
THIS PLAT IS MADE SOLELY FOR THE PURPOSES OF ASSISTING IN LOCATING THE LAND, AND THE RECORDER'S OFFICE ASSUMES NO LIABILITY FOR VARIATIONS IF ANY, WITH AN ACTUAL SURVEY.



COORDINATE PTS USING
38.88 CH
117333.65
54474.30

COORDINATE PT USING
VALLEY CONTROL MAP
SEE SECTION 1 NOTES
117331.30
54474.26

W 1/2 SECTION 2 T26S R21E

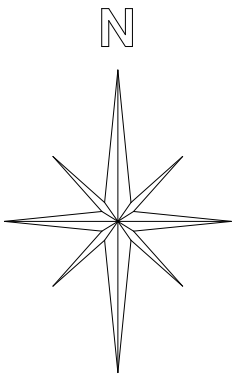
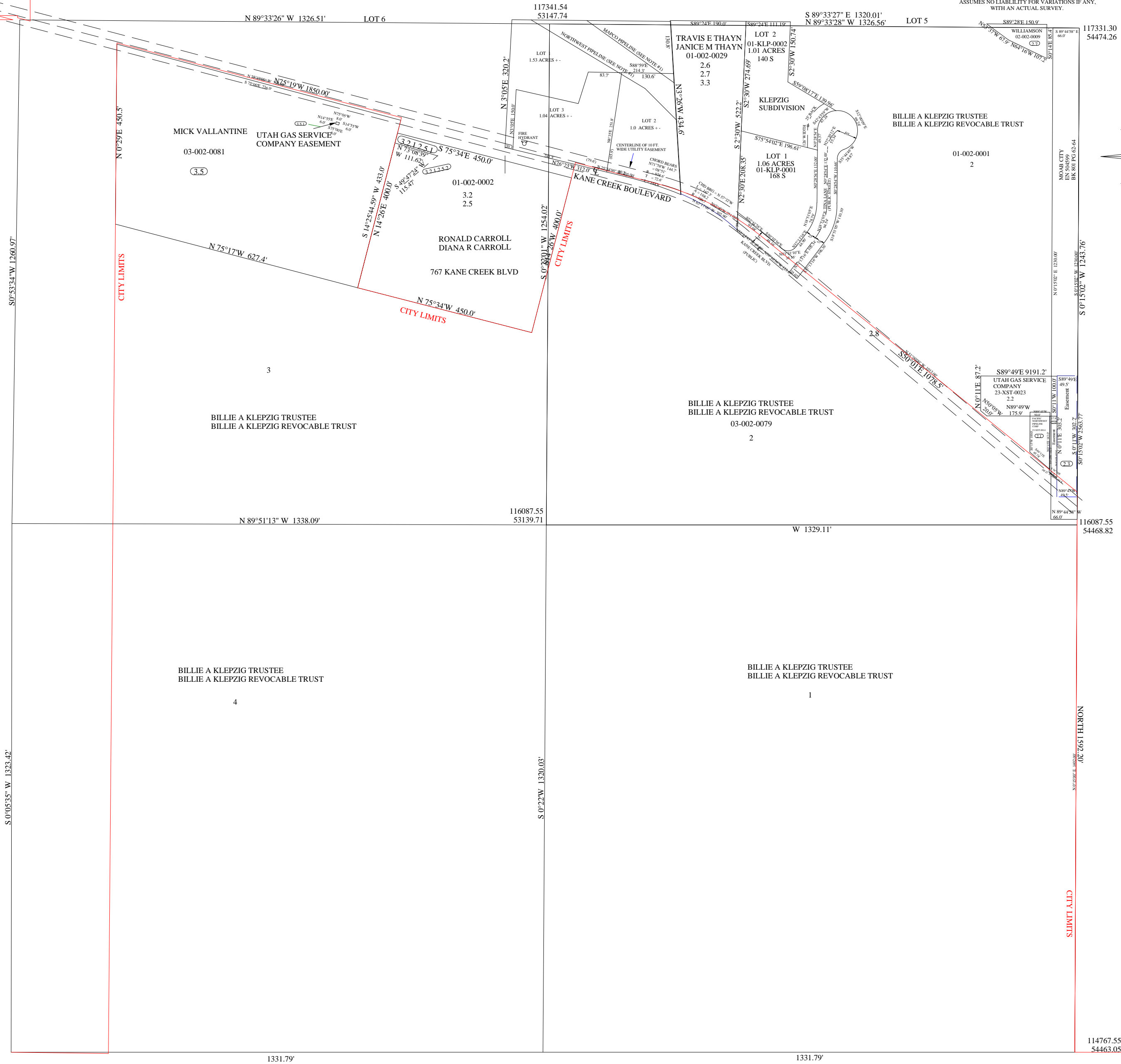


SE 1/4 SECTION 2 T26S R21E

SCALE: 1" = 200'

THIS PLAT IS MADE SOLELY FOR THE PURPOSES OF ASSISTING IN LOCATING THE LAND, AND THE RECORDER'S OFFICE ASSUMES NO LIABILITY FOR VARIATIONS IF ANY, WITH AN ACTUAL SURVEY.

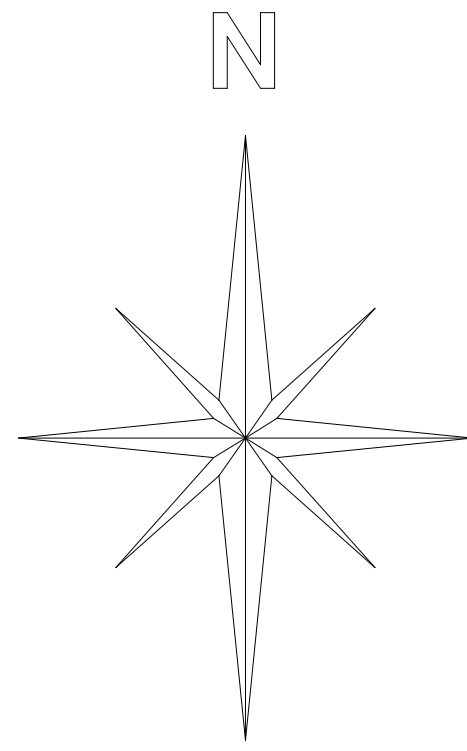
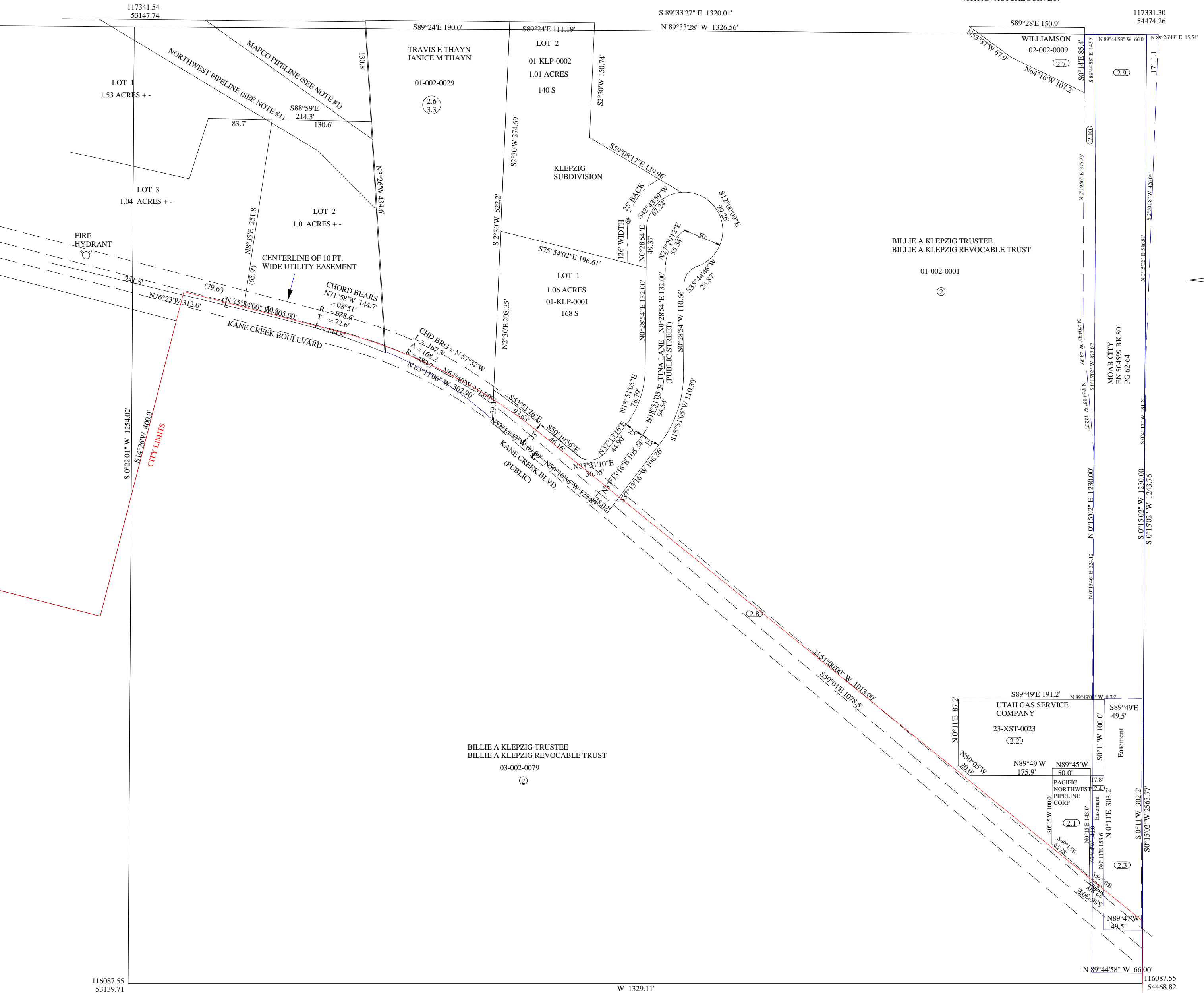
CITY LIMITS



THE INFORMATION USED TO DRAW THIS PLAT IS FROM THE G.L.O. SURVEY PLATS, PRIVATE SURVEYS AND MYLAR PLATS LOCATED AT THE RECORDERS OFFICE

LOT 5 (NE 1/4 SE 1/4) SECTION 2 T26S R21E

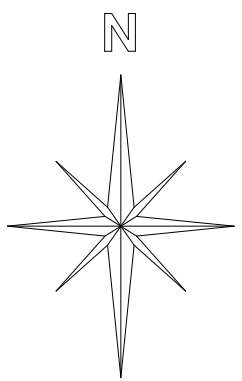
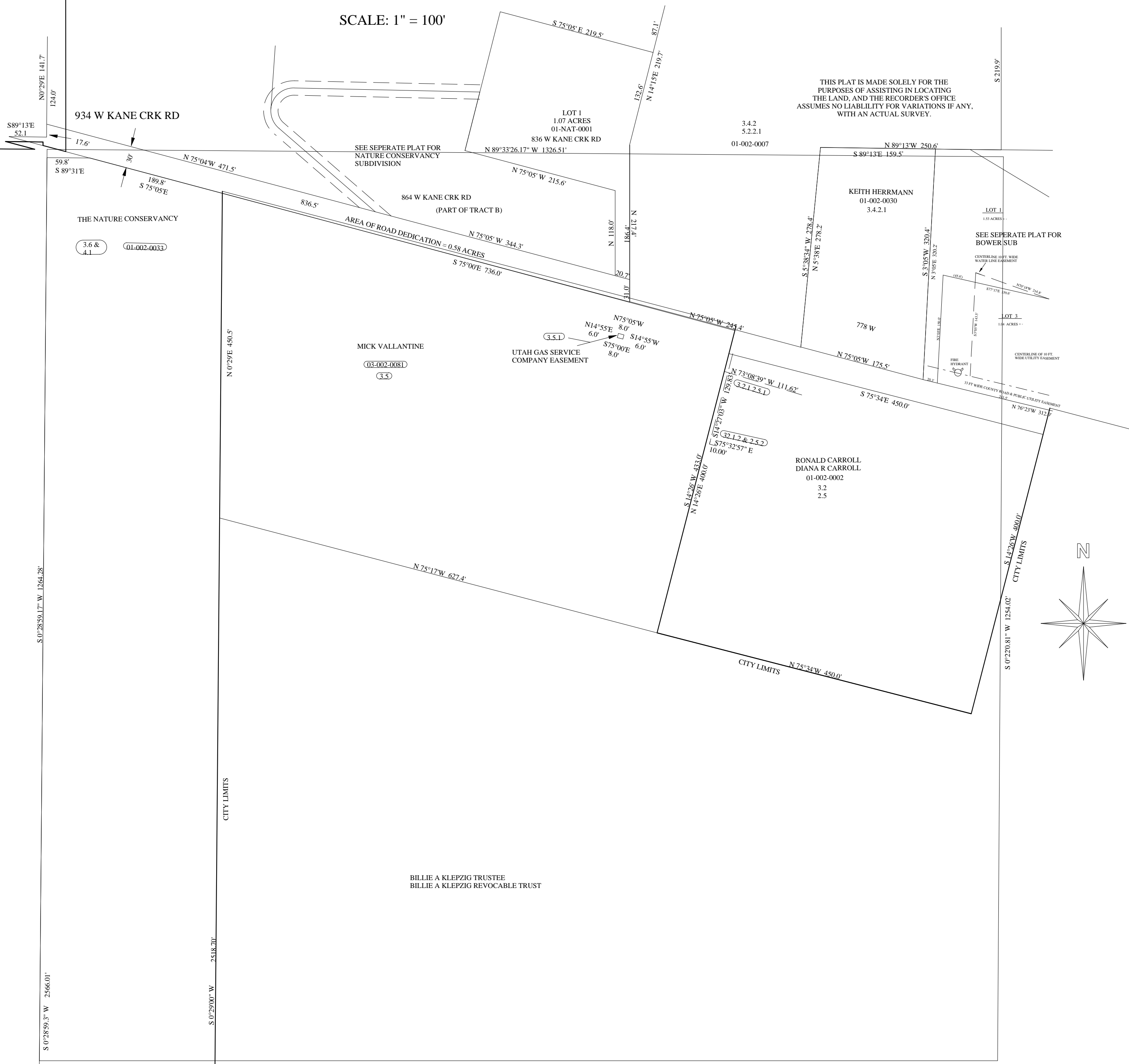
THIS PLAT IS MADE SOLELY FOR THE PURPOSES OF ASSISTING IN LOCATING THE LAND, AND THE RECORDER'S OFFICE ASSUMES NO LIABILITY FOR VARIATIONS IF ANY, WITH AN ACTUAL SURVEY.



LOT 6 (NW 1/4 SE 1/4) SECTION 2 T26S R21E

SCALE: 1" = 100'

THIS PLAT IS MADE SOLELY FOR THE PURPOSES OF ASSISTING IN LOCATING THE LAND, AND THE RECORDER'S OFFICE ASSUMES NO LIABILITY FOR VARIATIONS IF ANY, WITH AN ACTUAL SURVEY.



BILLIE A KLEPZIG TRUSTEE
BILLIE A KLEPZIG REVOCABLE TRUST

THE INFORMATION USED TO DRAW THIS PLAT IS FROM THE G.L.O. SURVEY PLATS, PRIVATE SURVEYS AND MYLAR PLATS LOCATED AT THE RECORDERS OFFICE