

SECTION 10 T21S R16E

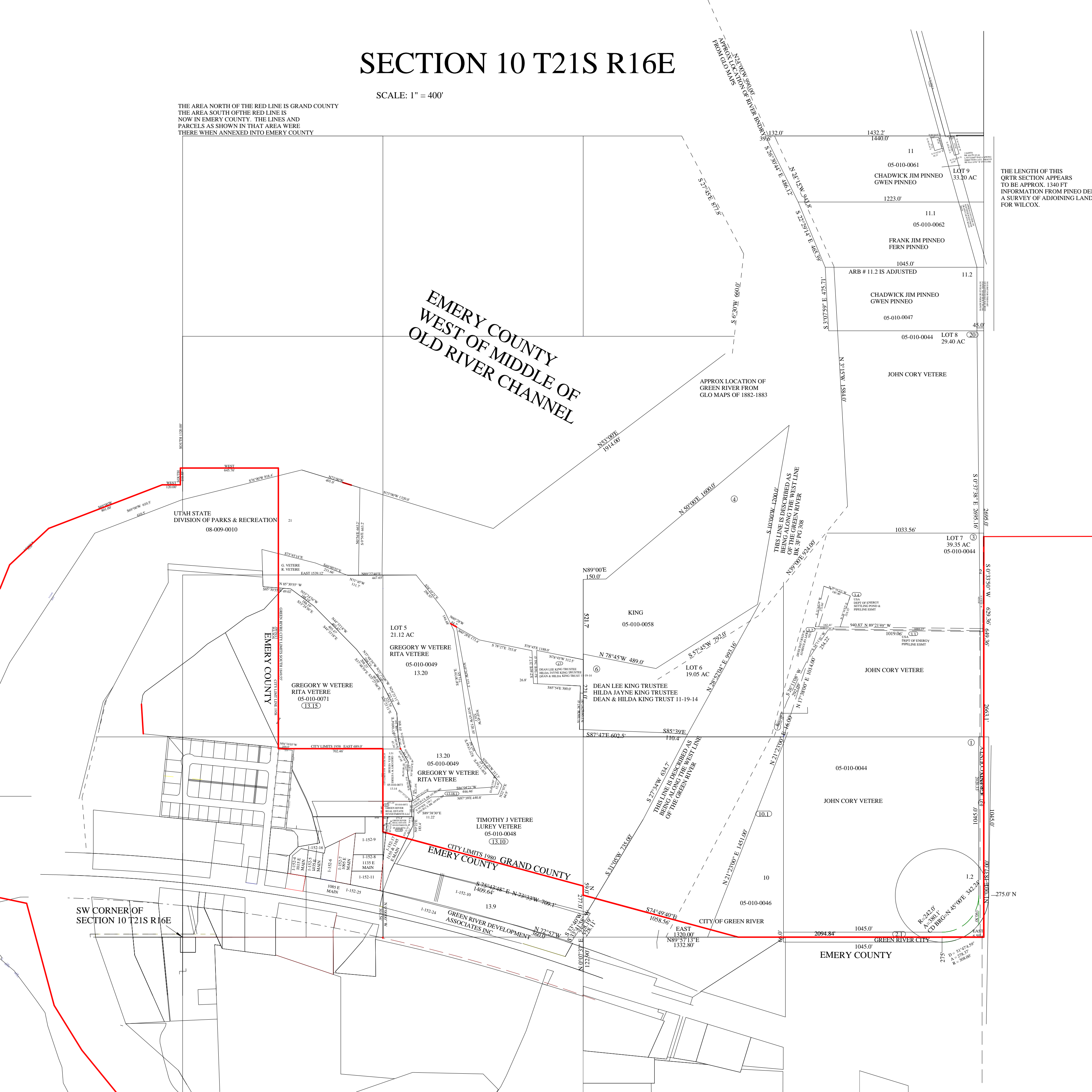
SCALE: 1" = 400'

THE AREA NORTH OF THE RED LINE IS GRAND COUNTY
THE AREA SOUTH OF THE RED LINE IS
NOW IN EMERY COUNTY. THE LINES AND
PARCELS AS SHOWN IN THAT AREA WERE
THERE WHEN ANNEXED INTO EMERY COUNTY

EMERY COUNTY
WEST OF MIDDLE OF
OLD RIVER CHANNEL

APPROX LOCATION OF
GREEN RIVER FROM
GLO MAPS OF 1882-1883

THE LENGTH OF THIS
QTR SECTION APPEARS
TO BE APPROX. 1340 FT
INFORMATION FROM PINEO DE
A SURVEY OF ADJOINING LAND
FOR WILCOX.



UTAH STATE
DIVISION OF PARKS & RECREATION
08-009-0010

EMERY COUNTY

CITY LIMITS 1980
EMERY COUNTY

GRAND COUNTY

SW CORNER OF
SECTION 10 T21S R16E

EMERY COUNTY

