

# SECTION 4 T22S R19E

SCALE: 1" = 400'

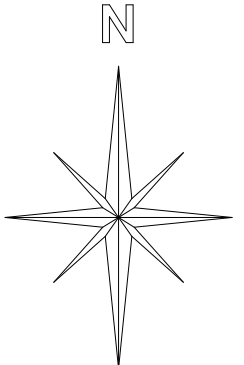
THIS PLAT IS MADE SOLELY FOR THE PURPOSE OF ASSISTING IN LOCATING THE LAND, AND THE RECORDER ASSUMES NO LIABILITY FOR VARIATIONS IF ANY, WITH AN ACTUAL SURVEY.



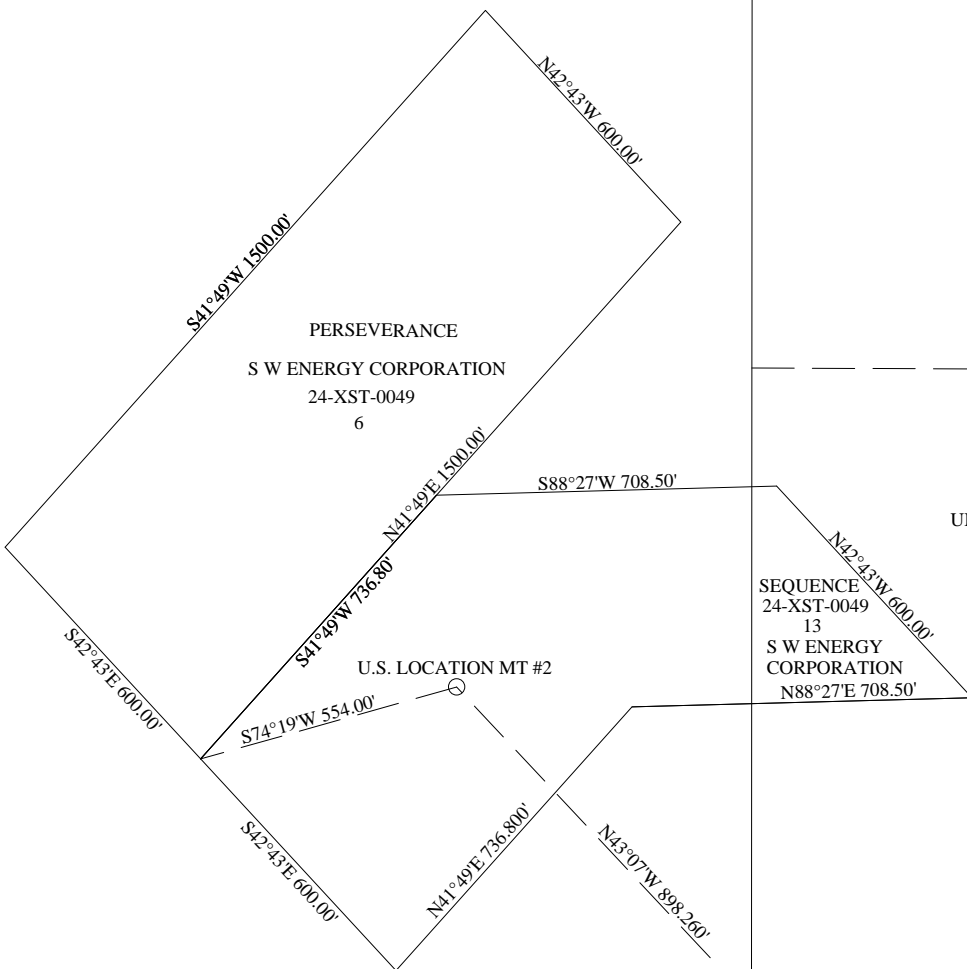
THE INFORMATION USED TO DRAW THIS PLAT IS FROM THE G.L.O. SURVEY PLATS, PRIVATE SURVEYS AND MYLAR PLATS LOCATED AT THE RECORDERS OFFICE

# SECTION 1 T23S R17E SLB&M

SCALE: 1" = 400'



THIS PLAT IS MADE SOLELY FOR THE PURPOSE OF ASSISTING IN LOCATING THE LAND, AND THE RECORDER ASSUMES NO LIABILITY FOR VARIATIONS IF ANY, WITH AN ACTUAL SURVEY.



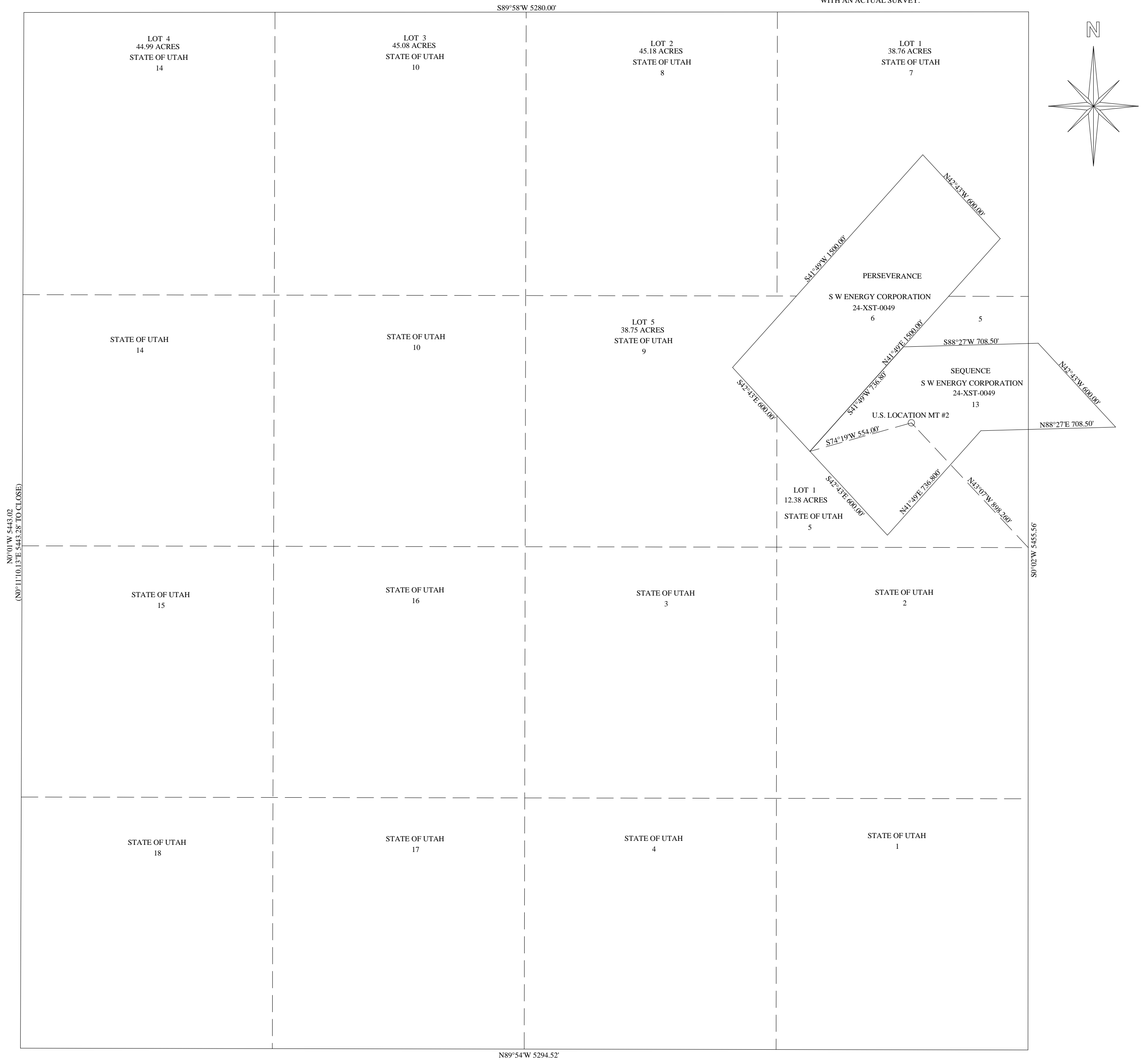
(S89°45'15.04"E 5283.22' TO CLOSE)  
S89°49'E 5285.28'

THE INFORMATION USED TO DRAW THIS PLAT IS FROM THE G.L.O. SURVEY PLATS, PRIVATE SURVEYS AND MYLAR PLATS LOCATED AT THE RECORDERS OFFICE

# SECTION 2 T23S R17E SLB&M

SCALE: 1" = 400'

THIS PLAT IS MADE SOLELY FOR THE PURPOSE OF ASSISTING IN LOCATING THE LAND, AND THE RECORDER ASSUMES NO LIABILITY FOR VARIATIONS IF ANY, WITH AN ACTUAL SURVEY.

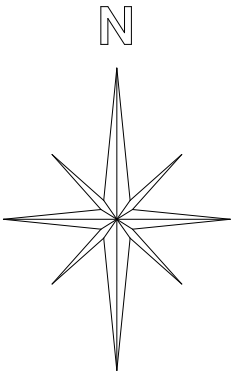


THE INFORMATION USED TO DRAW THIS PLAT IS FROM THE G.L.O. SURVEY PLATS, PRIVATE SURVEYS AND MYLAR PLATS LOCATED AT THE RECORDERS OFFICE.

# SECTION 34 T24S R25E SLM

SCALE: 1" = 400'

THIS PLAT IS MADE SOLELY FOR THE PURPOSE OF ASSISTING IN LOCATING THE LAND, AND THE RECORDER ASSUMES NO LIABILITY FOR VARIATIONS IF ANY, WITH AN ACTUAL SURVEY.

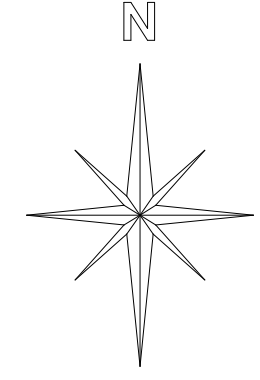


THE INFORMATION USED TO DRAW THIS PLAT IS FROM THE G.L.O. SURVEY PLATS, PRIVATE SURVEYS AND MYLAR PLATS LOCATED AT THE RECORDERS OFFICE

# SECTION 3 T25S R20E SLB&M

SCALE: 1" = 500'

THIS PLAT IS MADE SOLELY FOR THE PURPOSE OF ASSISTING IN LOCATING THE LAND, AND THE RECORDER ASSUMES NO LIABILITY FOR VARIATIONS IF ANY, WITH AN ACTUAL SURVEY.

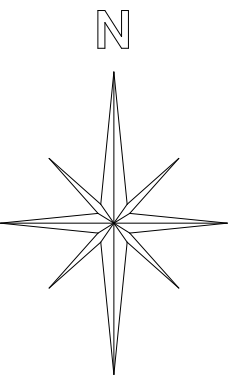
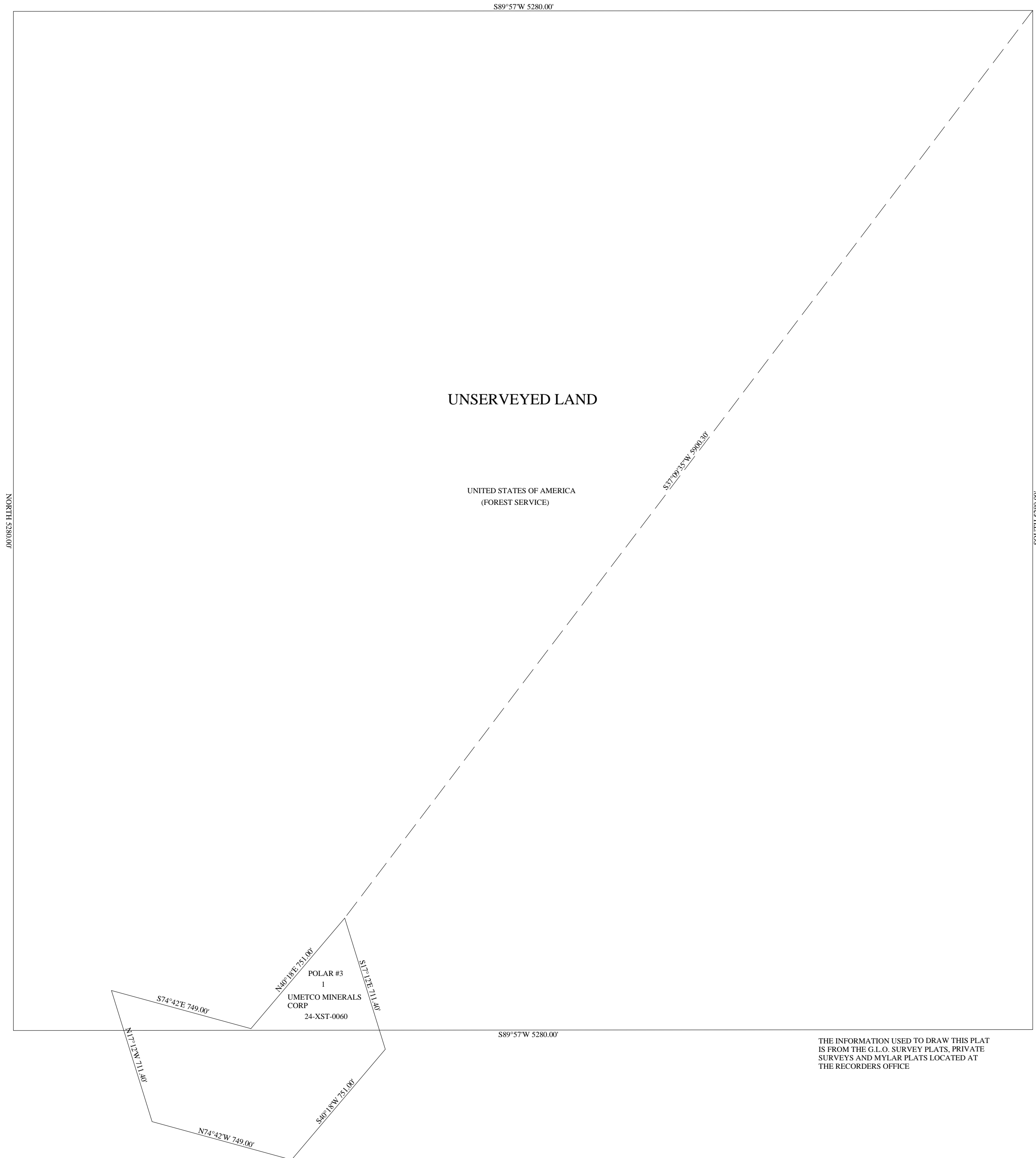


THE INFORMATION USED TO DRAW THIS PLAT IS FROM THE G.L.O. SURVEY PLATS, PRIVATE SURVEYS AND MYLAR PLATS LOCATED AT THE RECORDERS OFFICE

# SECTION 3 T25S R25E SLB&M

SCALE: 1" = 400'

THIS PLAT IS MADE SOLELY FOR THE PURPOSE OF ASSISTING IN LOCATING THE LAND, AND THE RECORDER ASSUMES NO LIABILITY FOR VARIATIONS IF ANY, WITH AN ACTUAL SURVEY.



THE INFORMATION USED TO DRAW THIS PLAT IS FROM THE G.L.O. SURVEY PLATS, PRIVATE SURVEYS AND MYLAR PLATS LOCATED AT THE RECORDERS OFFICE